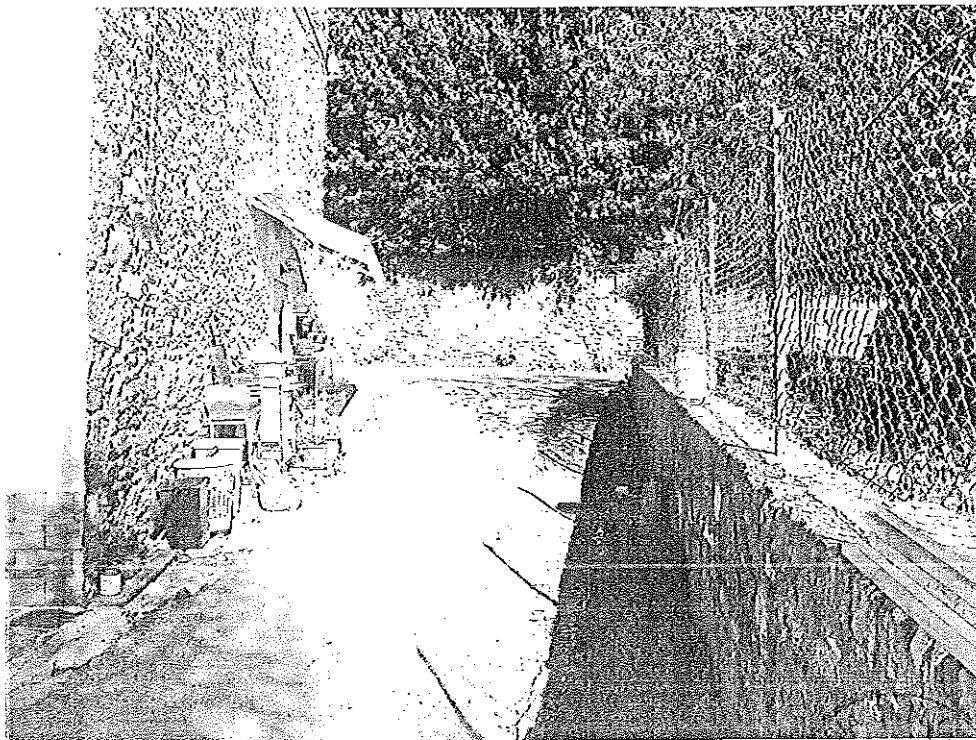


DOCUMENTAZIONE FOTOGRAFICA



PUNTO 1) FOTO 1: ingresso alla corte dalla Via Carlo del Prete

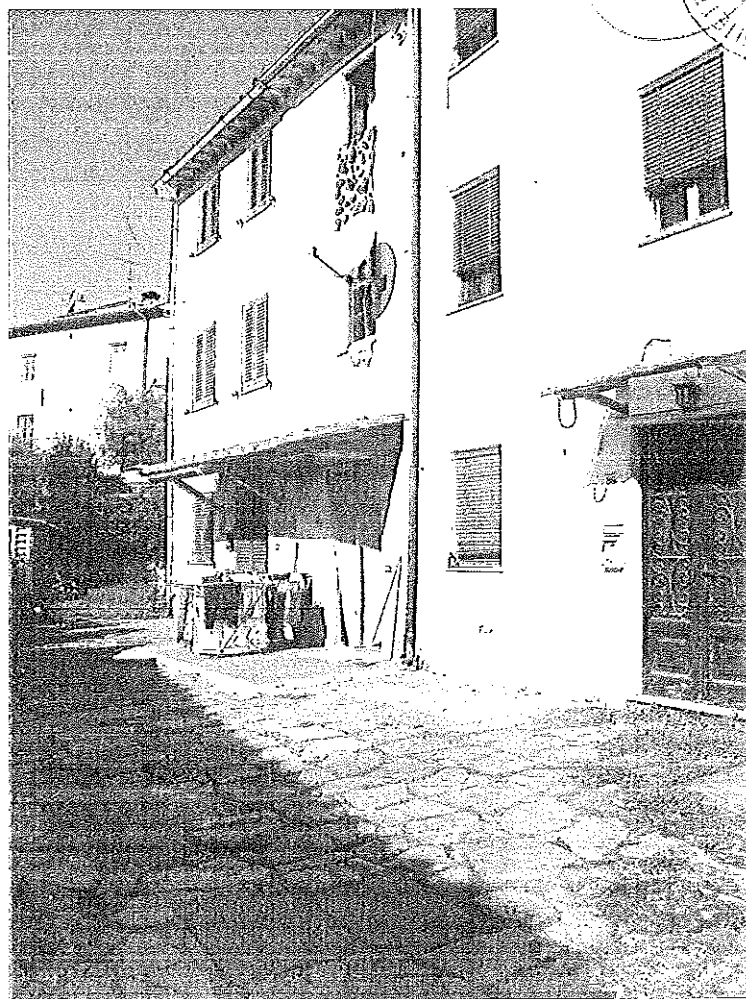


FOTO 2: lato sud (l'immobile interessato è quello con la parabola)



FOTO 3: lato sud

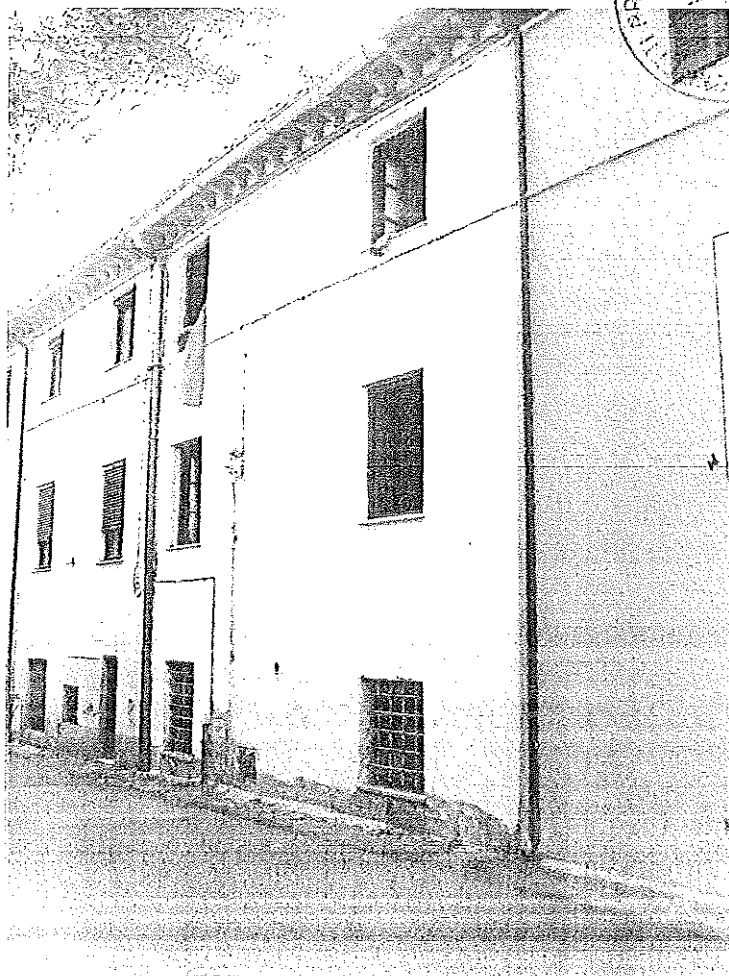
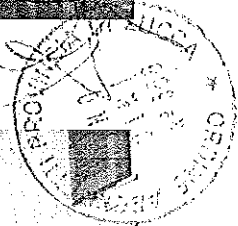
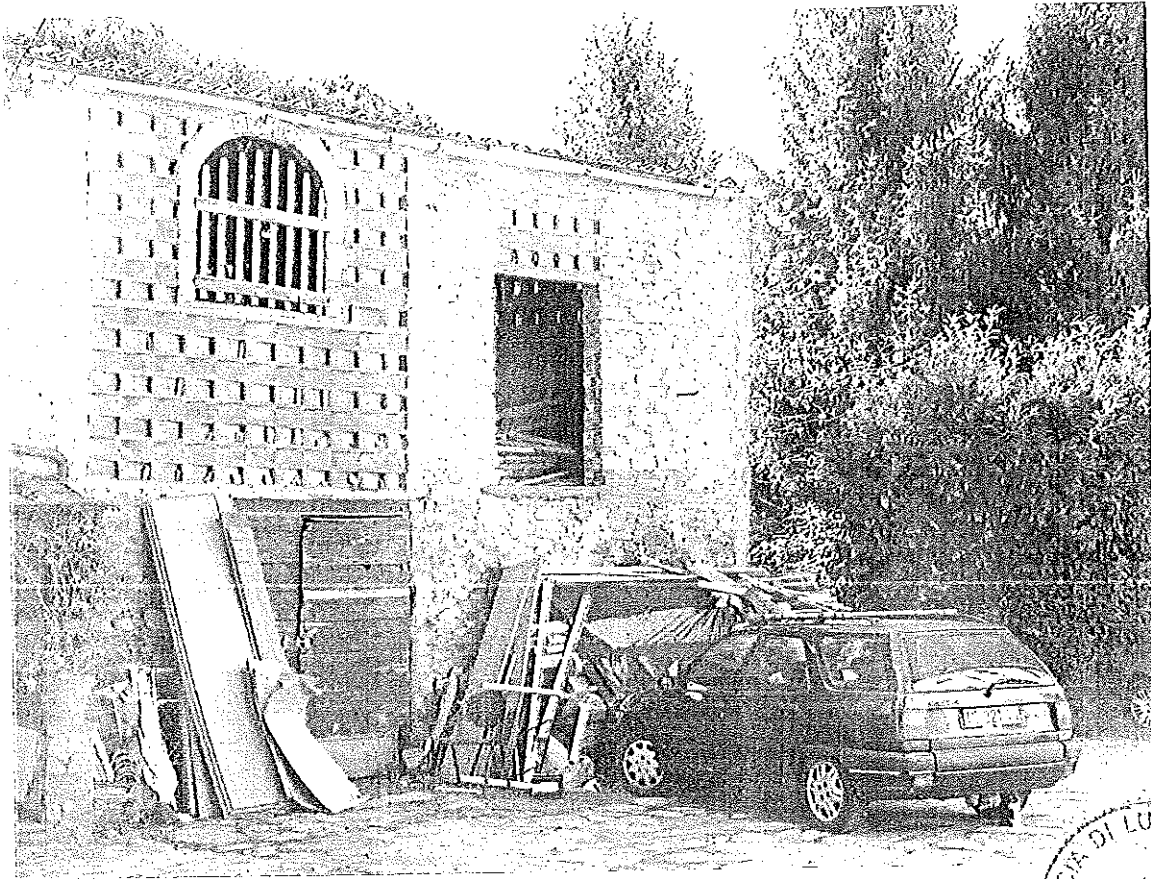


FOTO 4: lato nord su Via Carlo del Prete





PUNTO 2) FOTO 5: volume ad uso ripostiglio lato nord interno corte

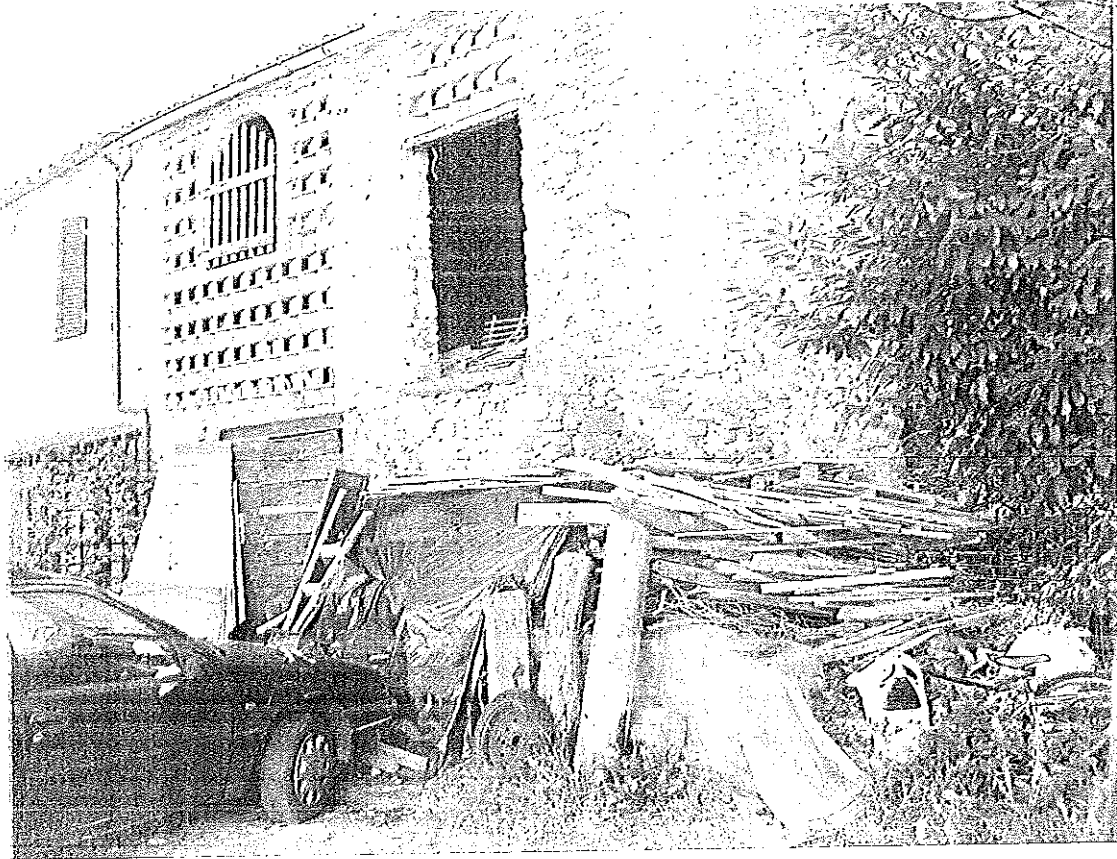
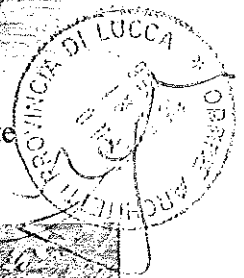


FOTO 6: volume ad uso ripostiglio