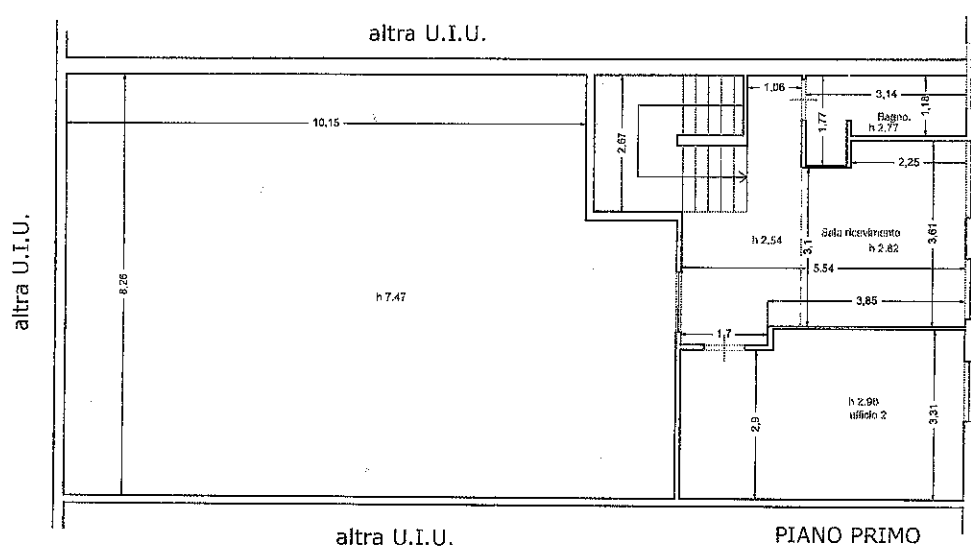


STATO RILEVATO IL 02.09.2014



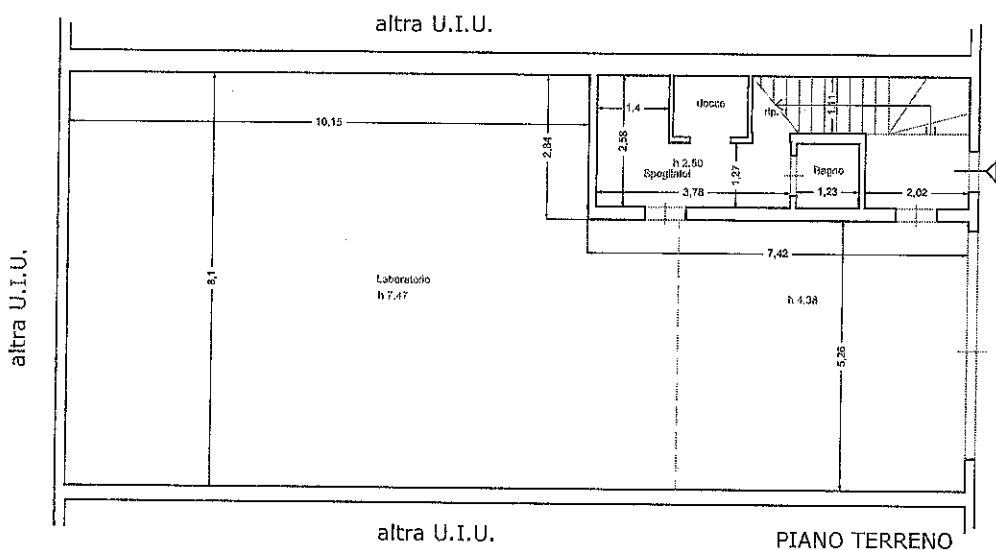
PIANO PRIMO	
SCALA	7,59 mq.
SALA RICEVIMENTO	11,13 mq.
UFFICIO	17,63 mq.
BAGNO	4,15 mq.
DISIMPEGNO	8,63 mq.

PIANO TERRENO	
LABORATORIO	121,24 mq.
INGRESSO	7,17 mq.
SPOGLIATOI	9,10 mq.
BAGNO	1,56 mq.

SUP. UTILE	188,20 mq.
SUP. LORDA PIANO TERRENO	151,20 mq.
SUP. LORDA PIANO PRIMO	55,07 mq.

PIAZZALE
AD USO
ESCLUSIVO

79,00 mq. circa



Piazzale a comune 229 mq.



via degli Arrotini 11 - scala 1:100