

COPIA

TRIBUNALE DI LUCCA

OGGETTO: RELAZIONE DI CONSULENZA TECNICA D'UFFICIO

Procedura di Esecuzione Immobiliare n. 430/2013 promossa da:

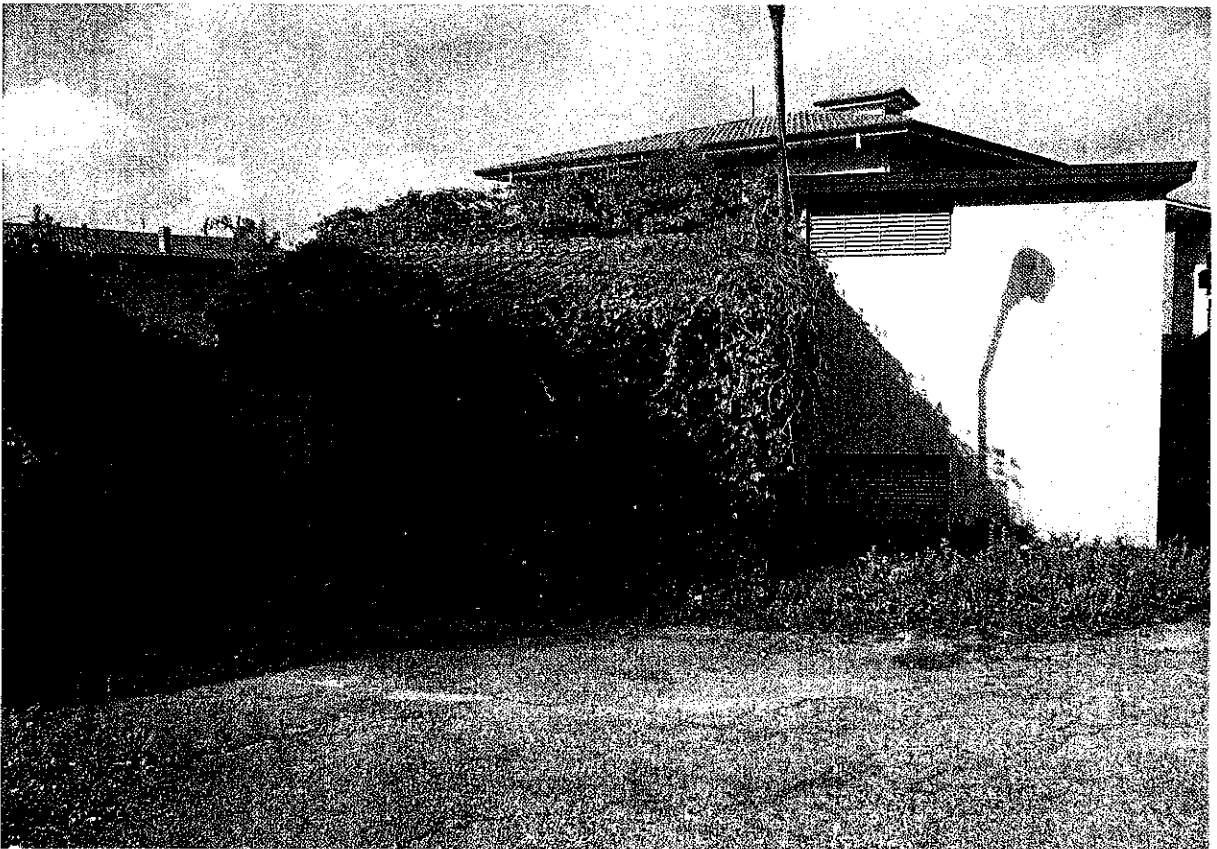
DEUTSCHE BANK SPA contro [REDACTED]

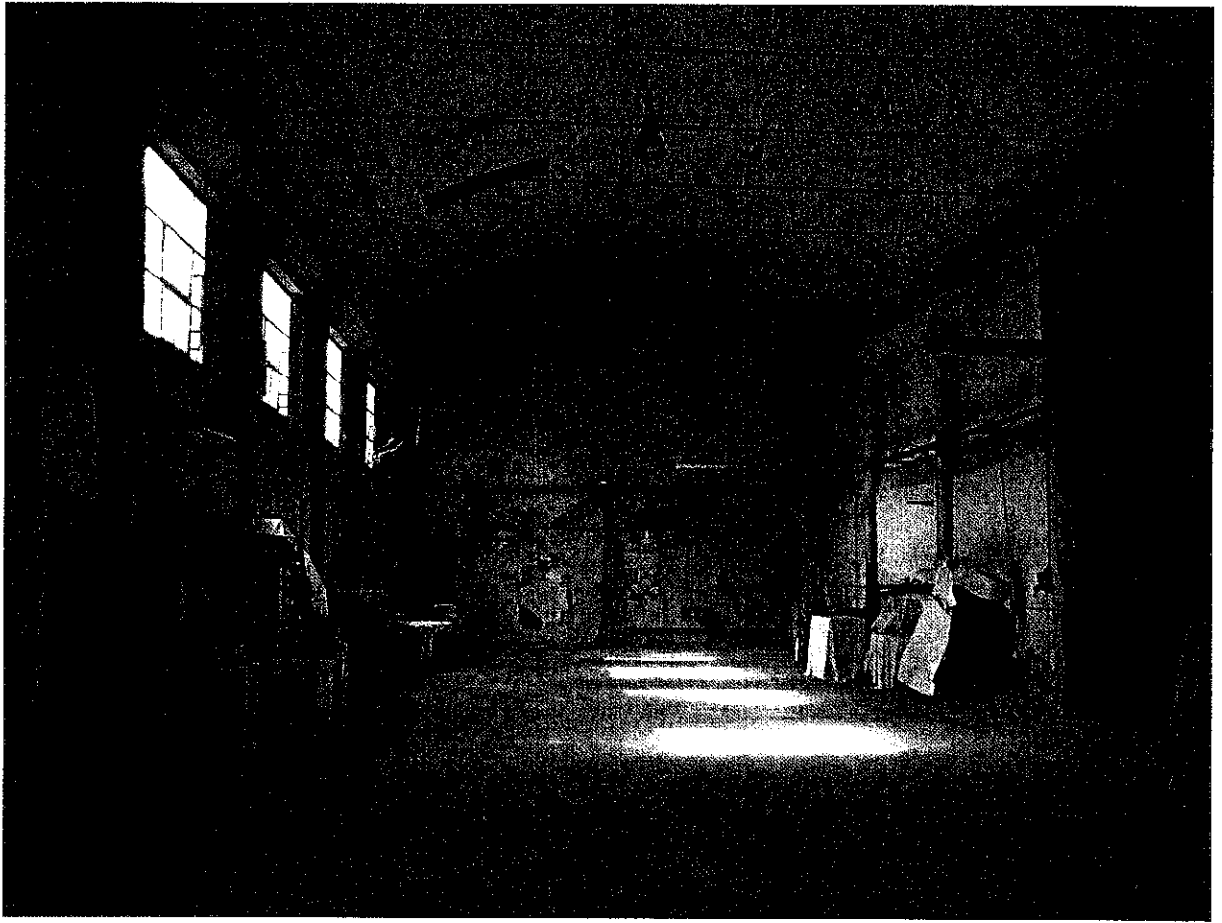
Giudice dell'esecuzione: Dr. G. Lucente

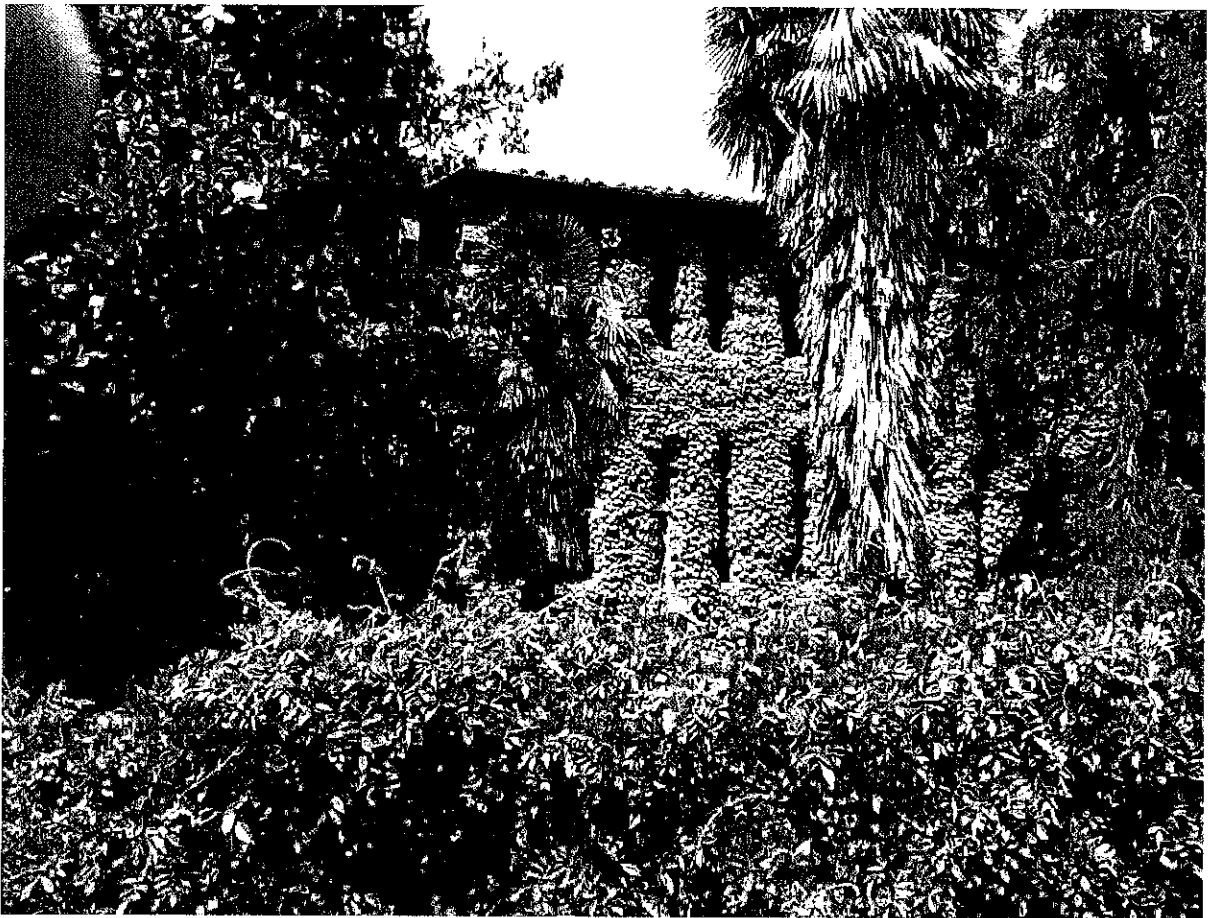
DOCUMENTAZIONE FOTOGRAFICA

LOTTO 1 CORPO A OPIFICIO

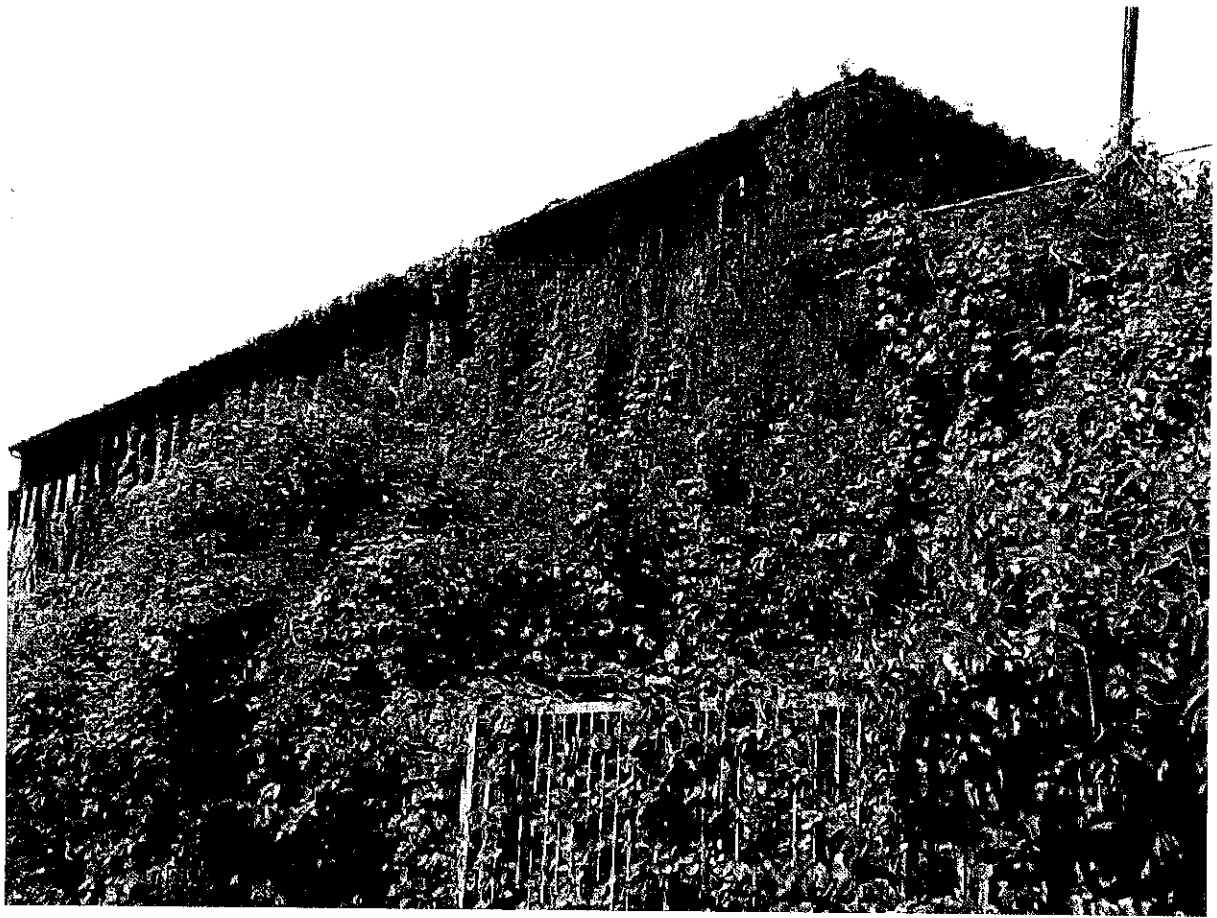






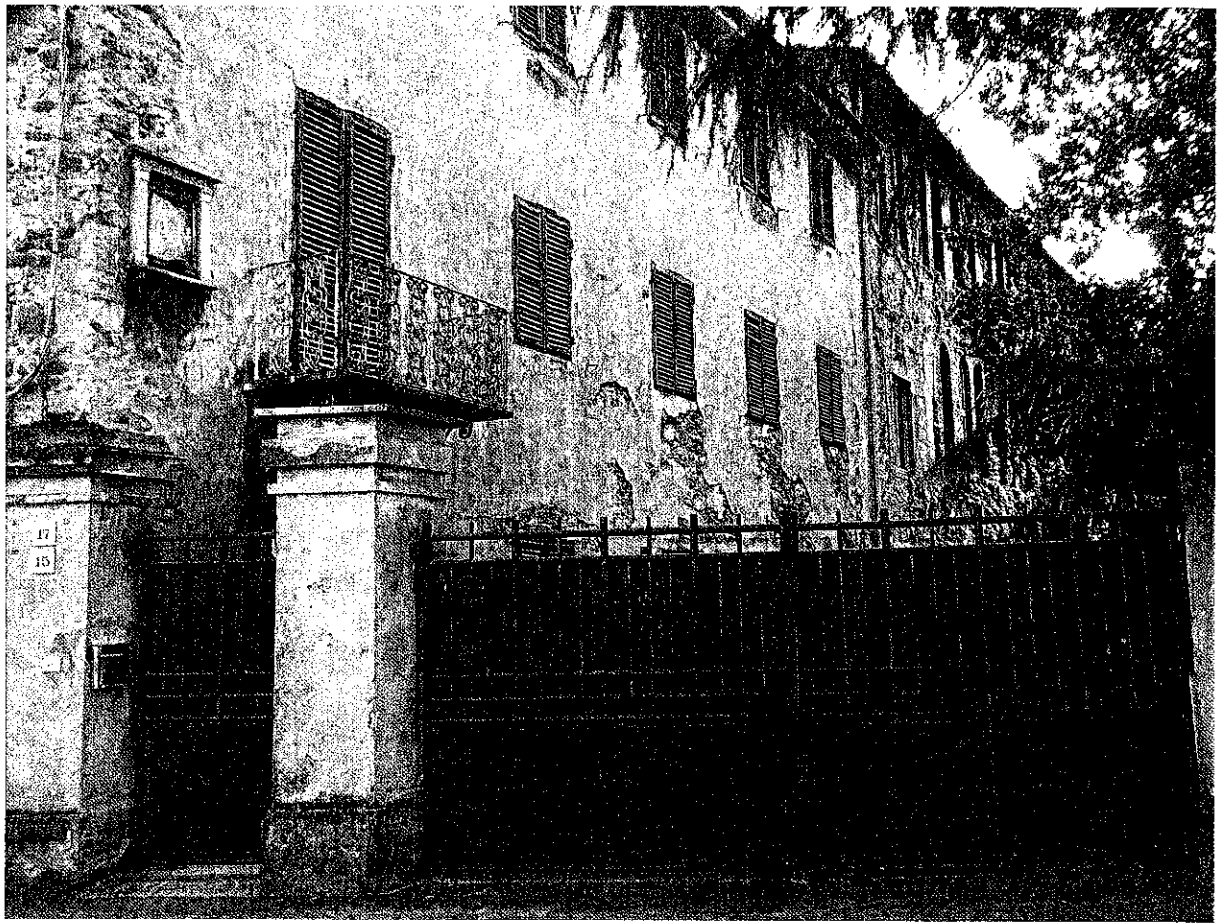




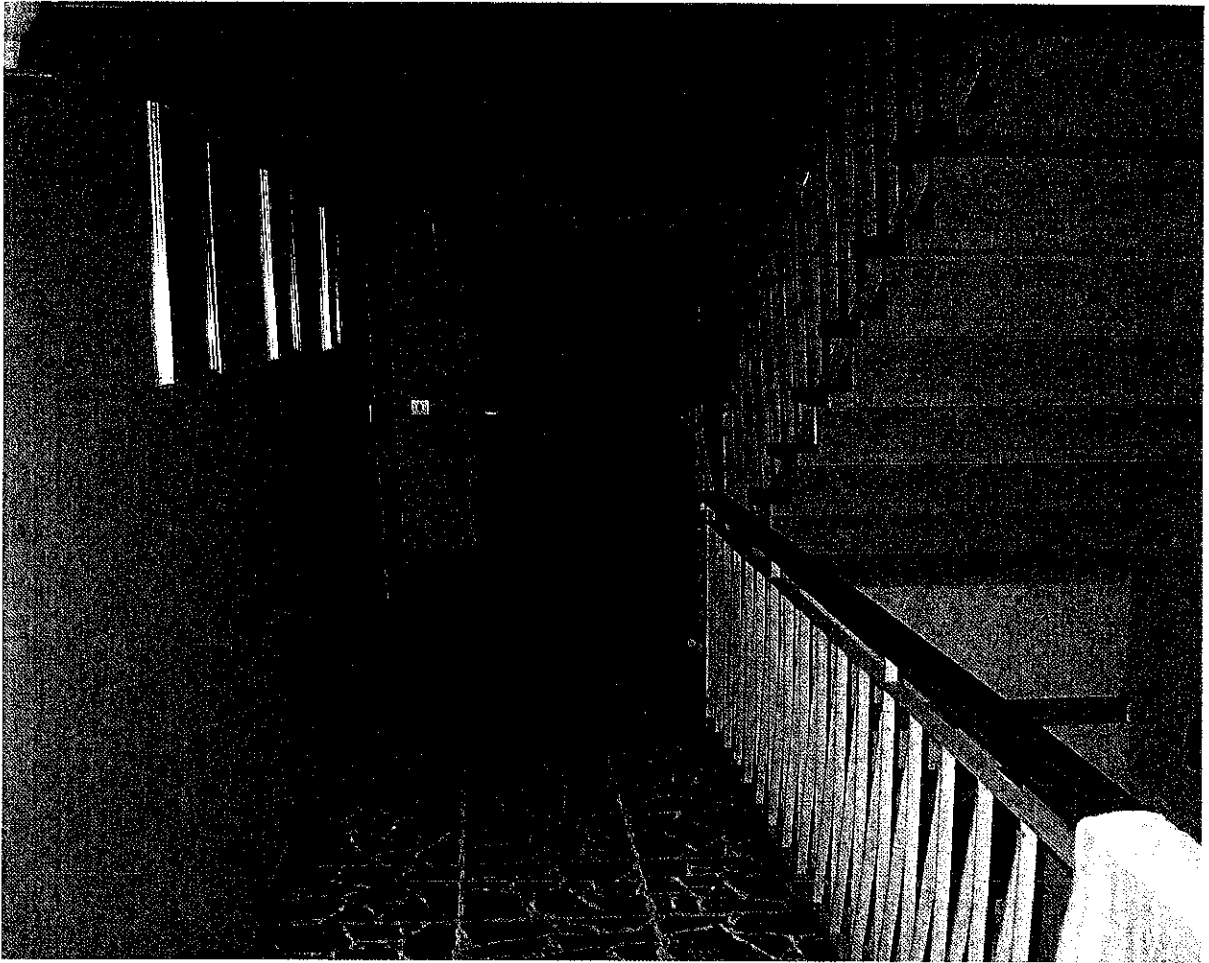


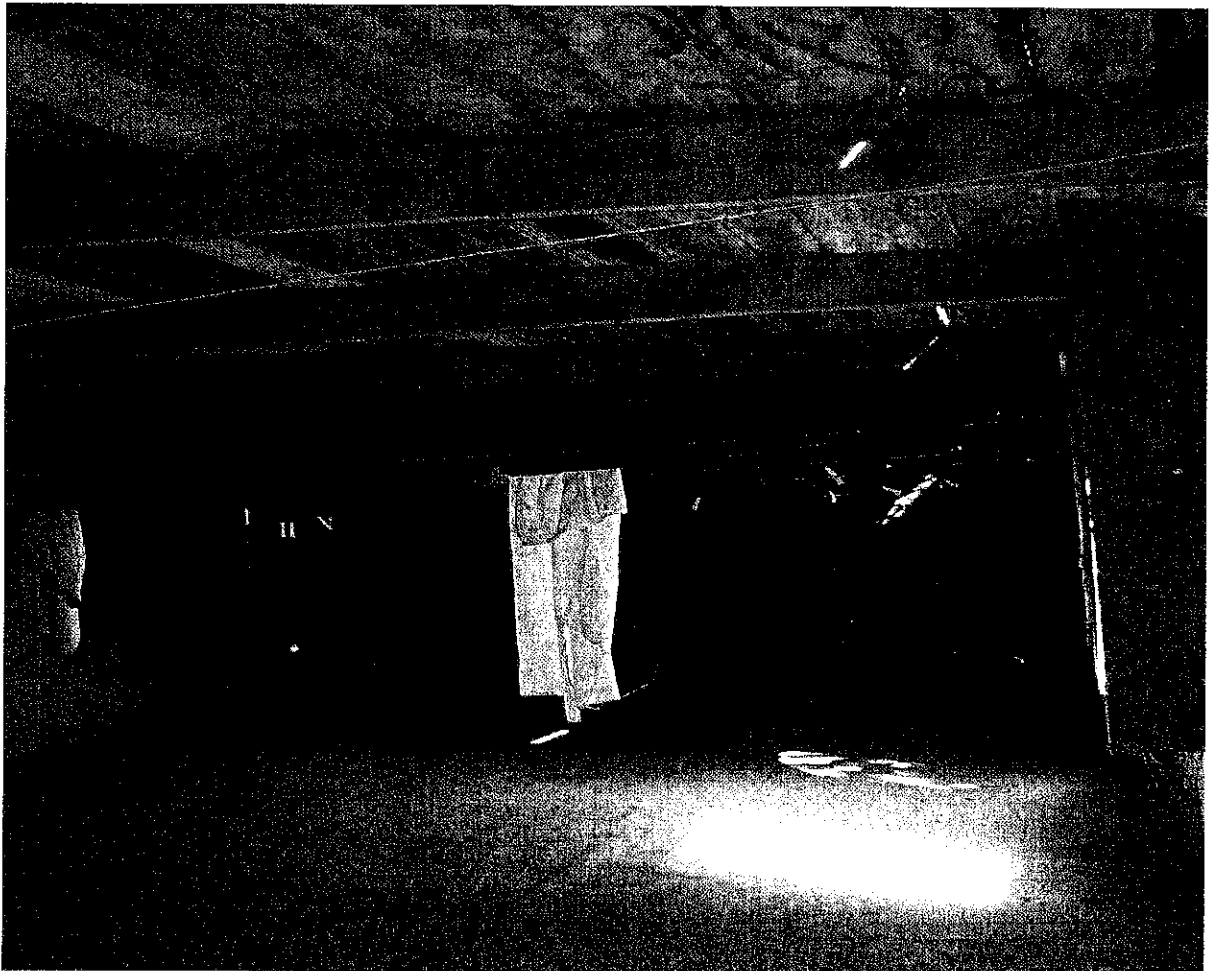
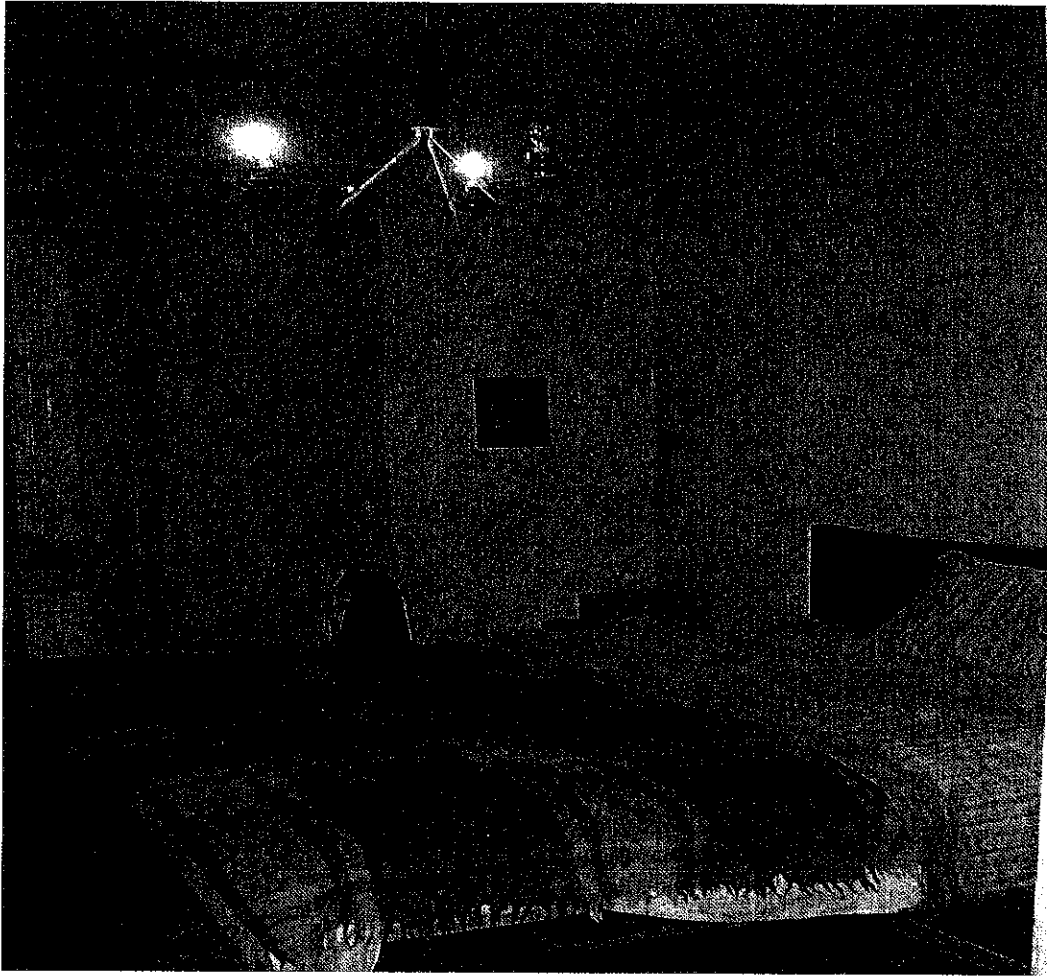
CORPO B APPARTAMENTO









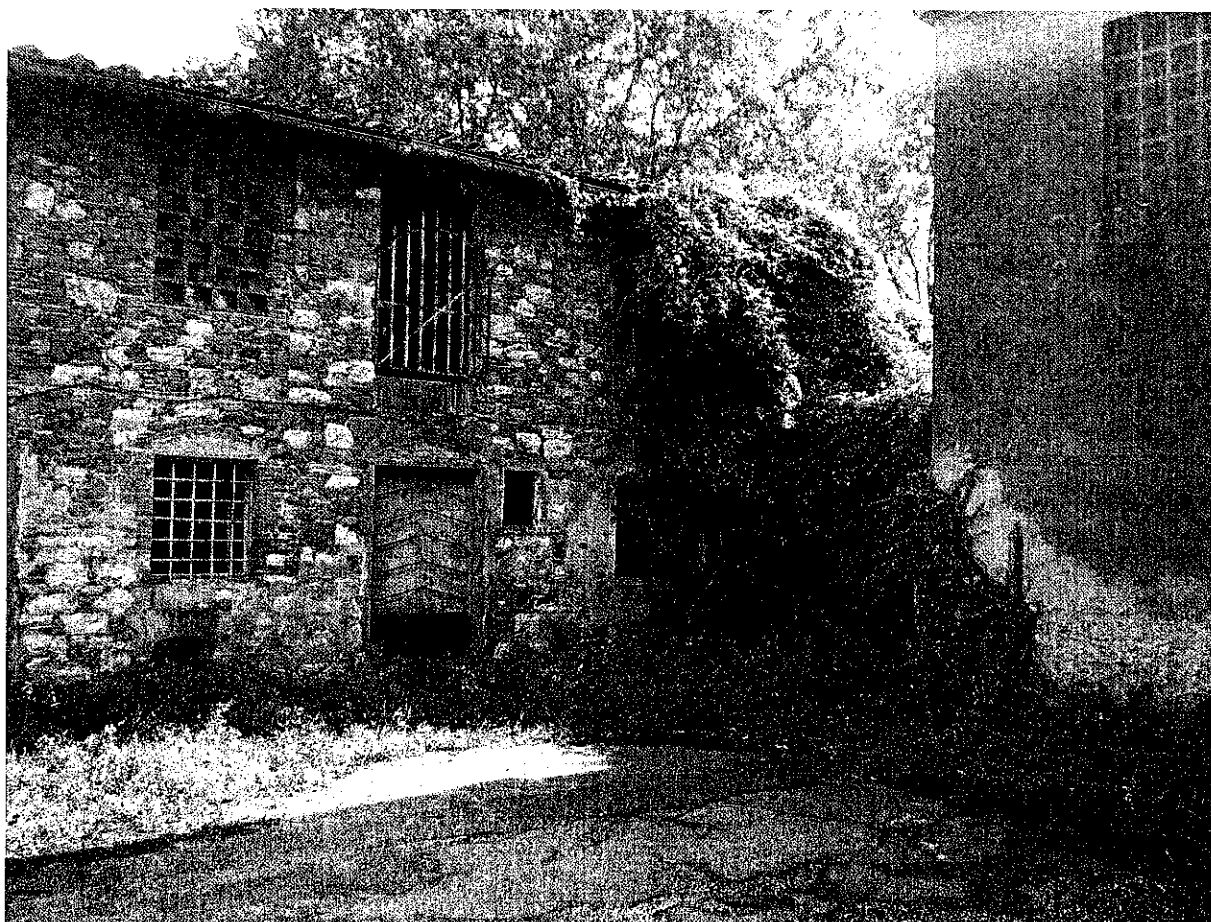


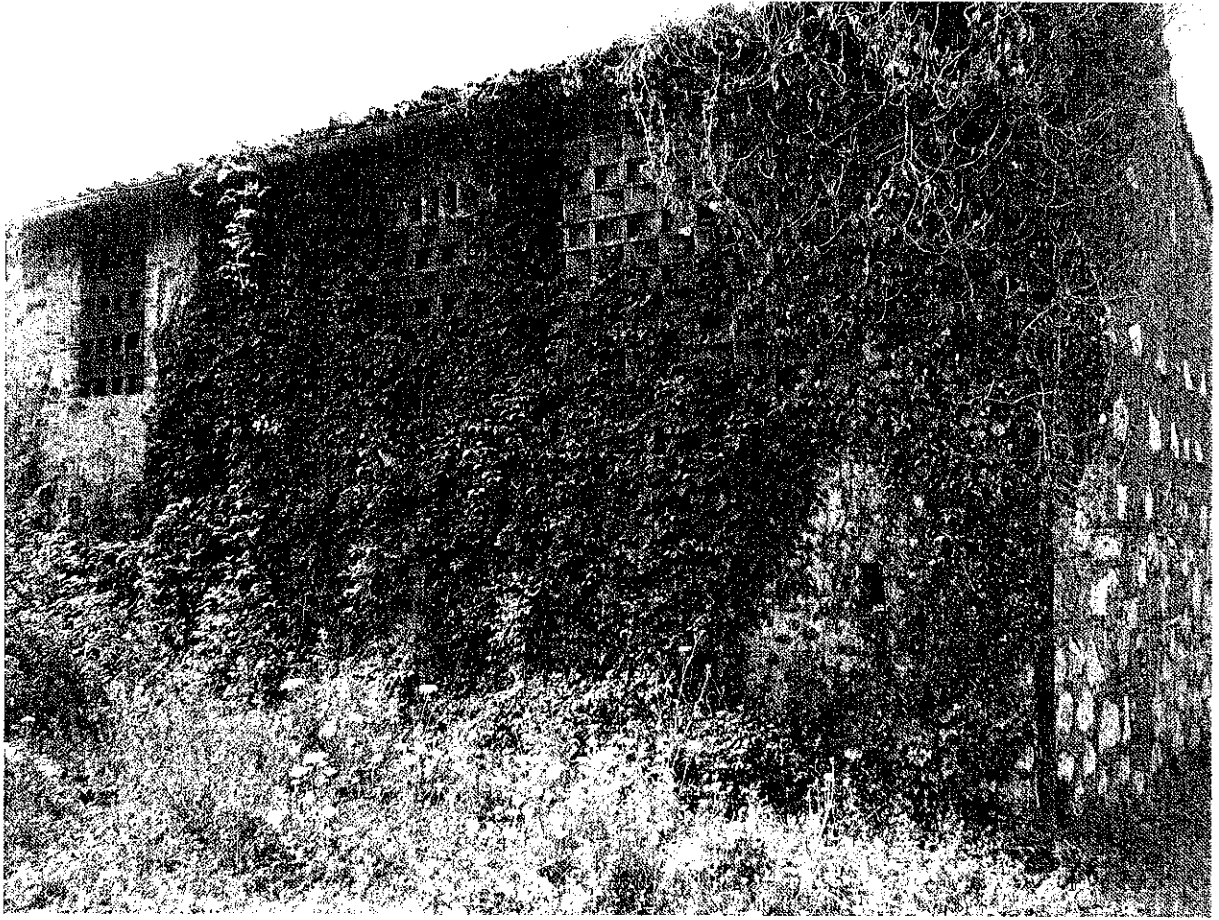
TERRENI





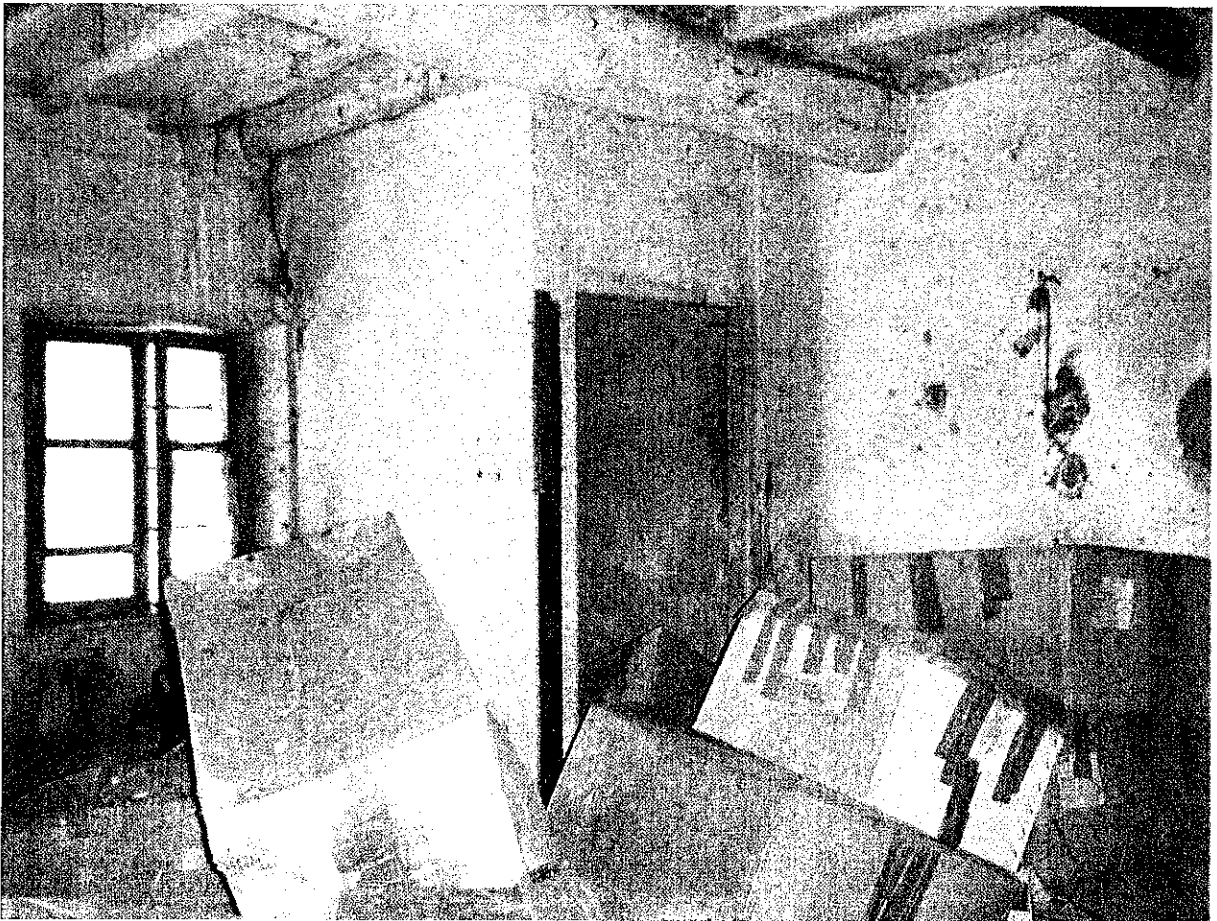
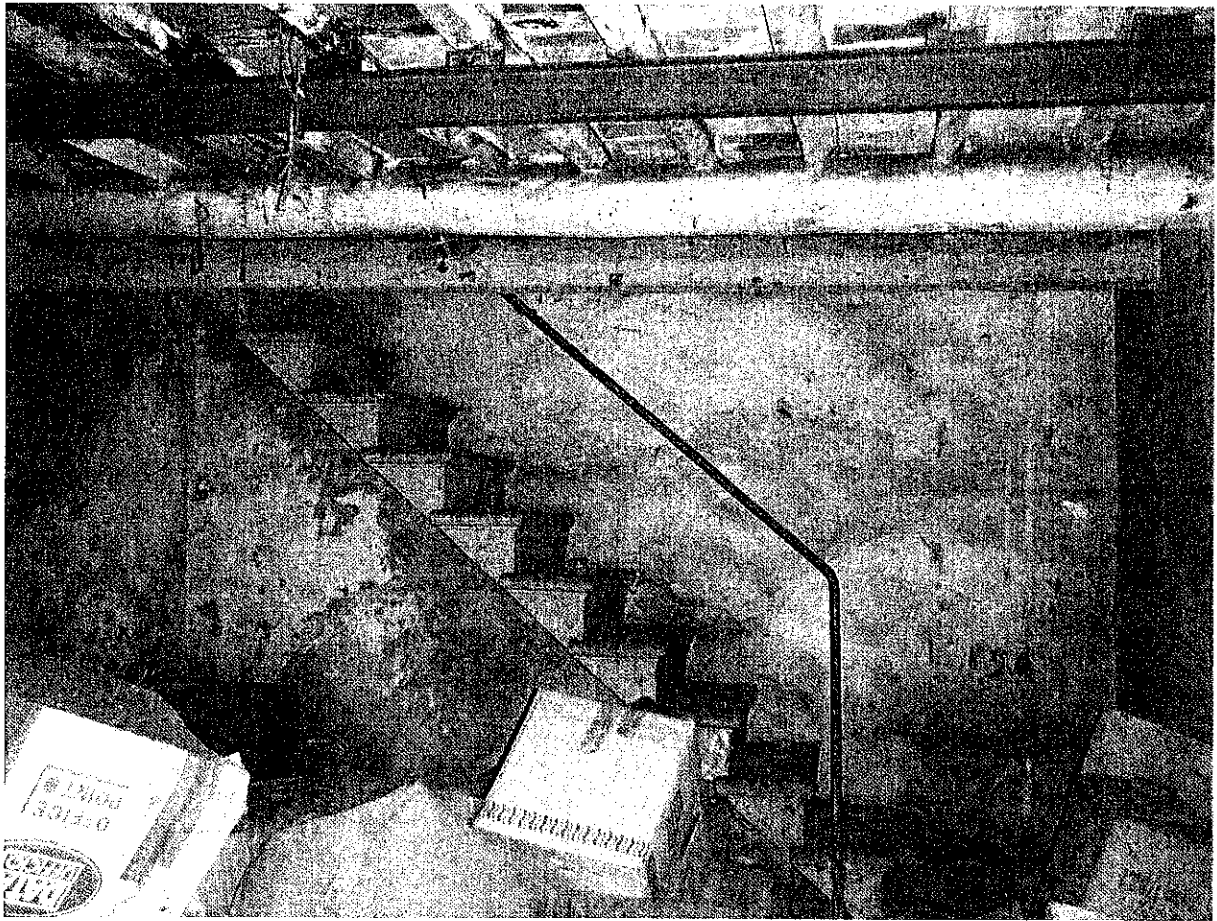
CORPO H CASCINA

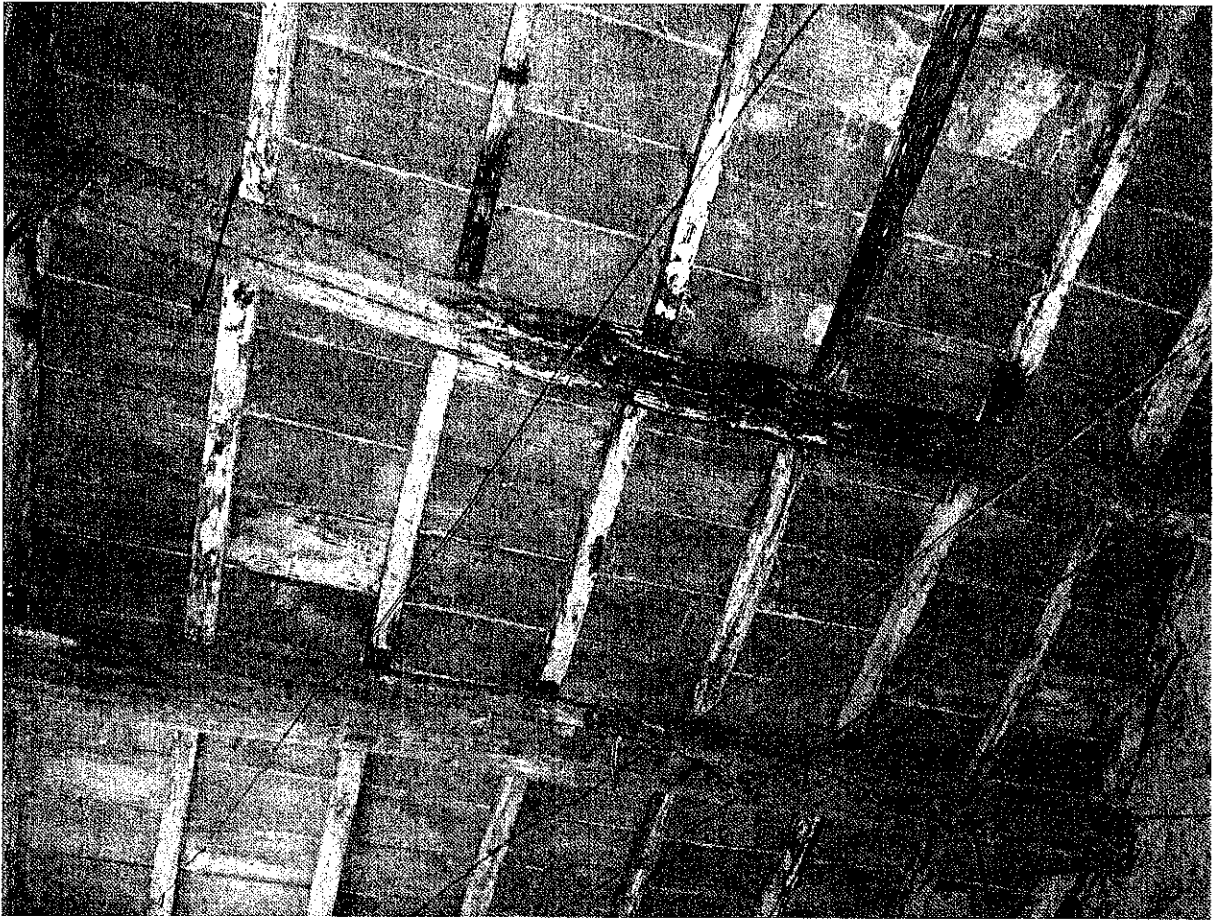




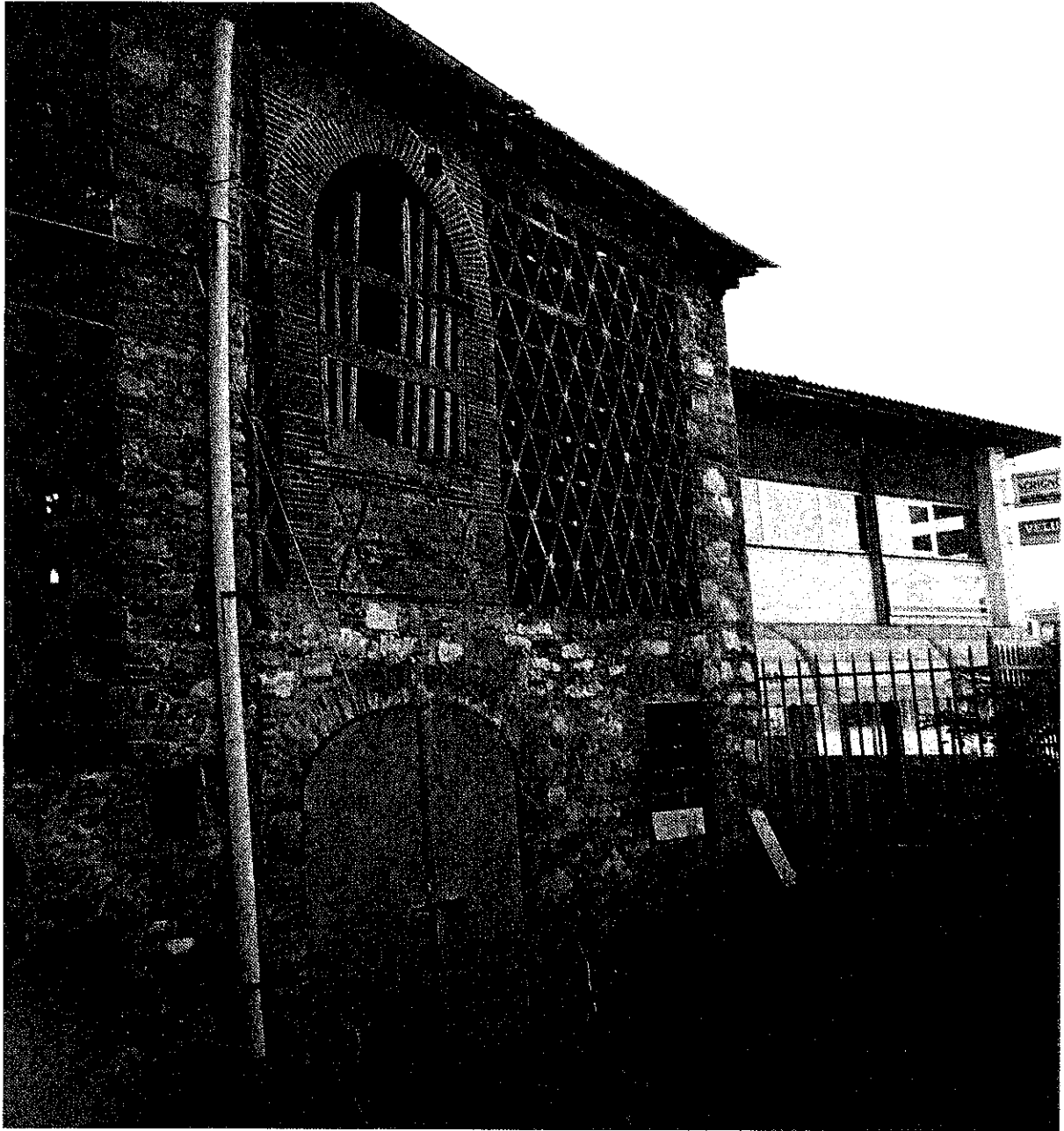
LOTTO 2 _CORPO A







CORPO B



Lucca li 31 ottobre 2014

Il Tecnico Incaricato

