

TRIBUNALE DI NUORO  
CANCELLERIA DELLE ESECUZIONI

Procedura n. **115/2012 R. Es.**

promossa da  
**Intesa Sanpaolo S.p.A.**  
Avv. Avv. Pietro Pittalis

Contro



Giudice:  
**Dott. Nicola Caschili**

**PERIZIA ESTIMATIVA  
RILIEVO FOTOGRAFICO  
Villino a Orosei (NU), località “Sos Cuccuros”**

*Tecnico incaricato:*  
**Arch. Simona Soro**  
Studio in Nuoro, via P. A. Manca 36  
tel. 3283671735  
e-mail [simona.soro@libero.it](mailto:simona.soro@libero.it)



1 - Immagine satellitare



2



3



4



5



6



7



8



9



10



11



12

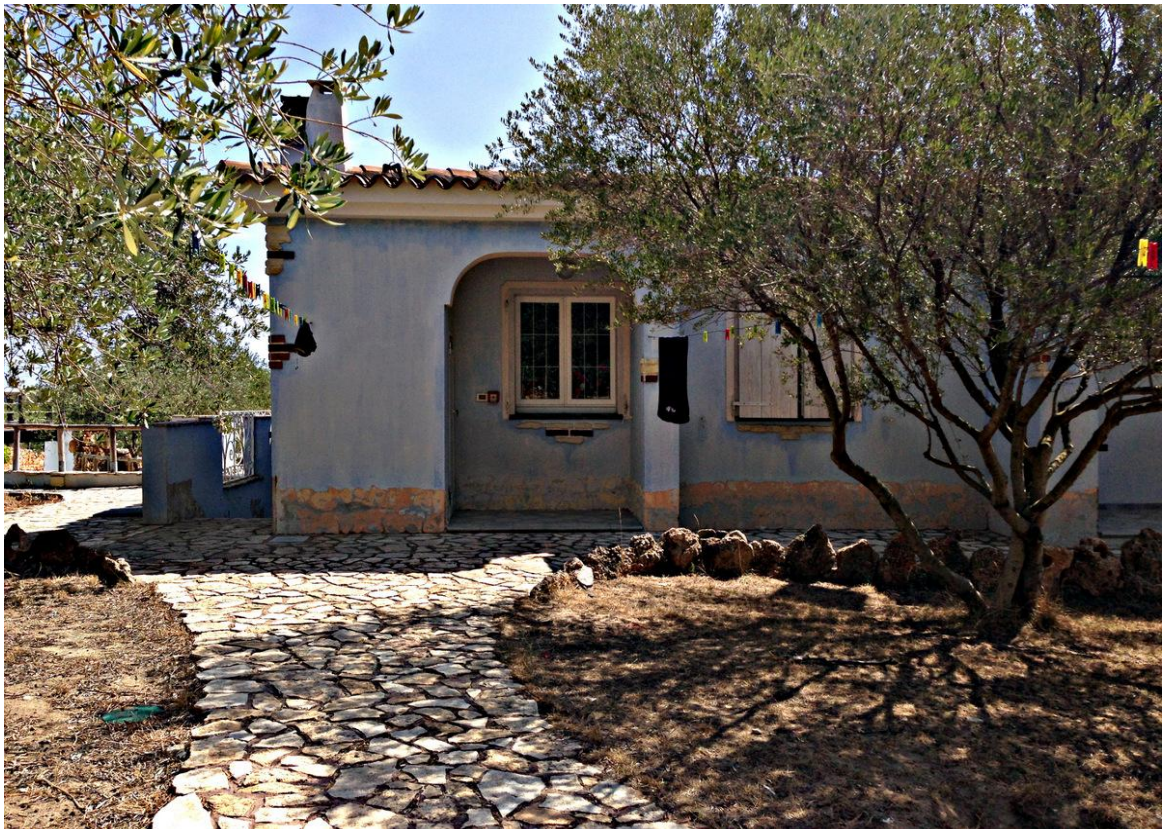


13





14



15



16



17



18



19



20



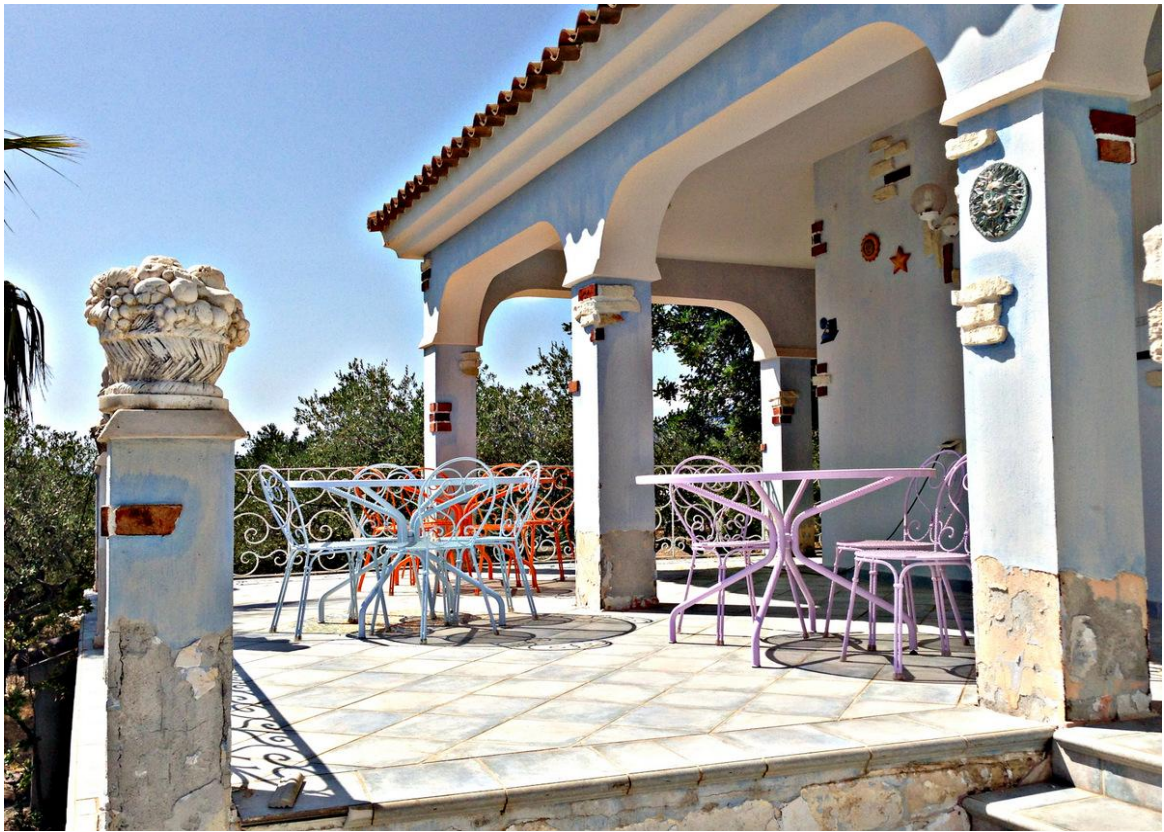
21



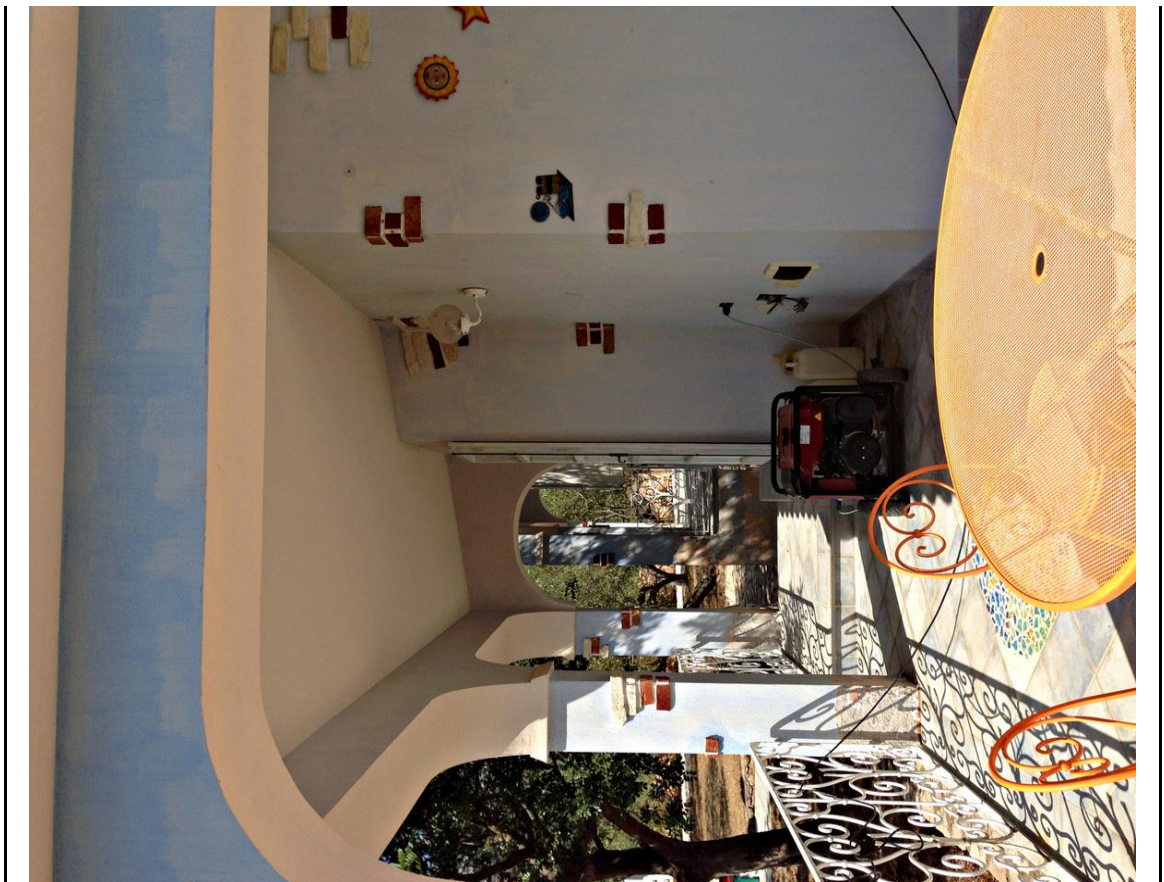
22



23



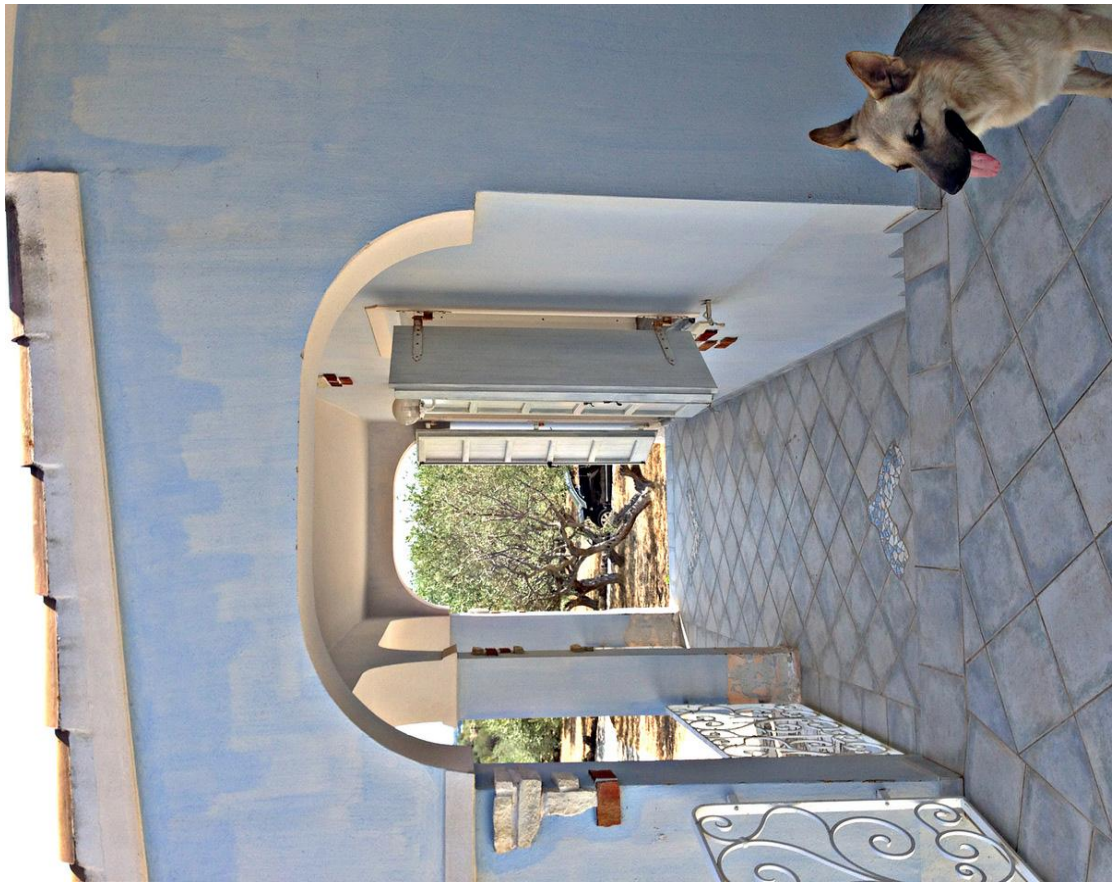
24



25



26



27

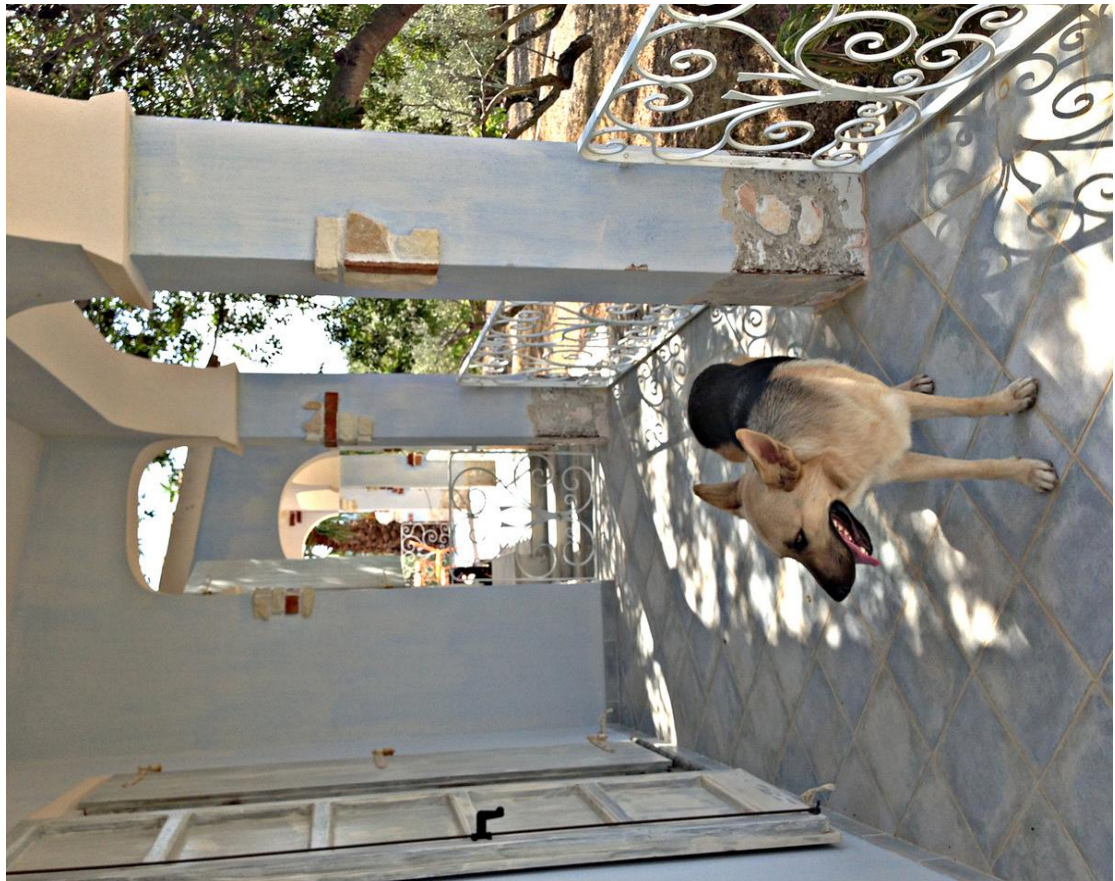


28



29





30



31



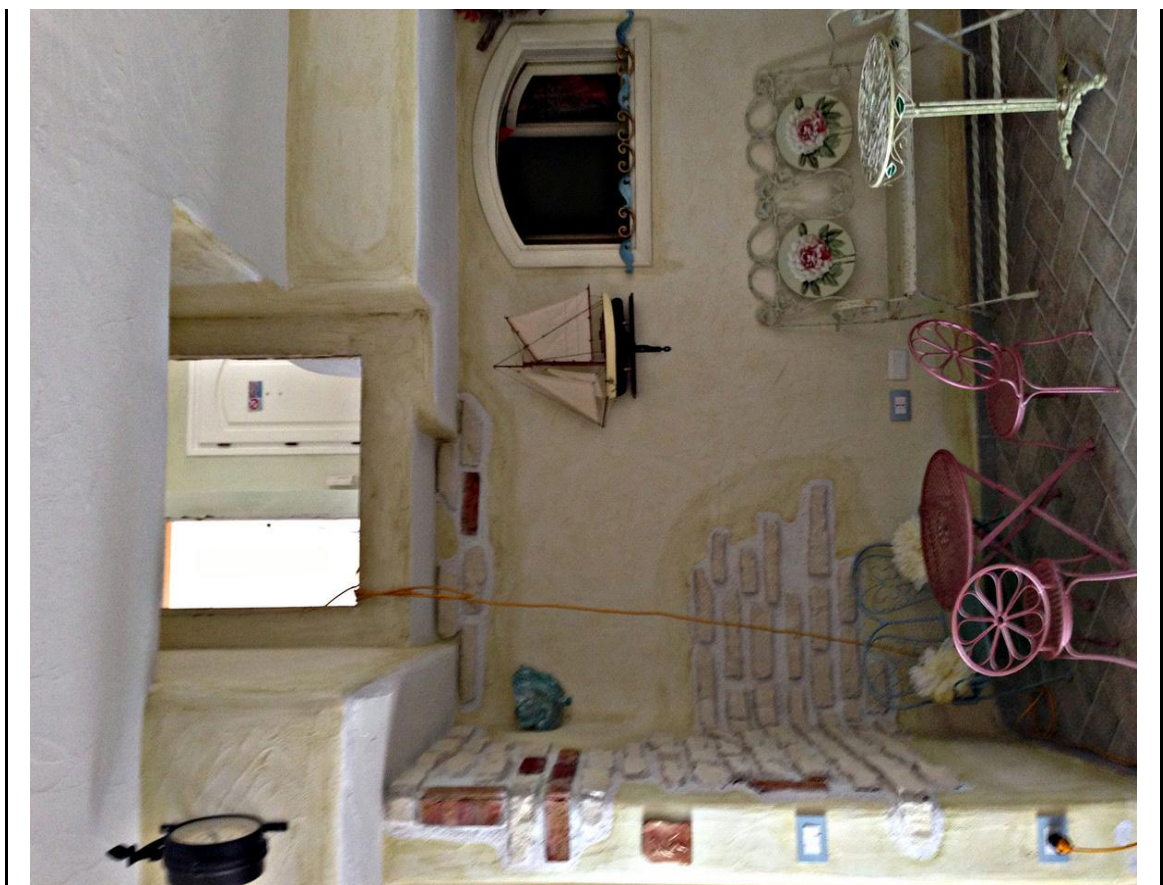
32



33



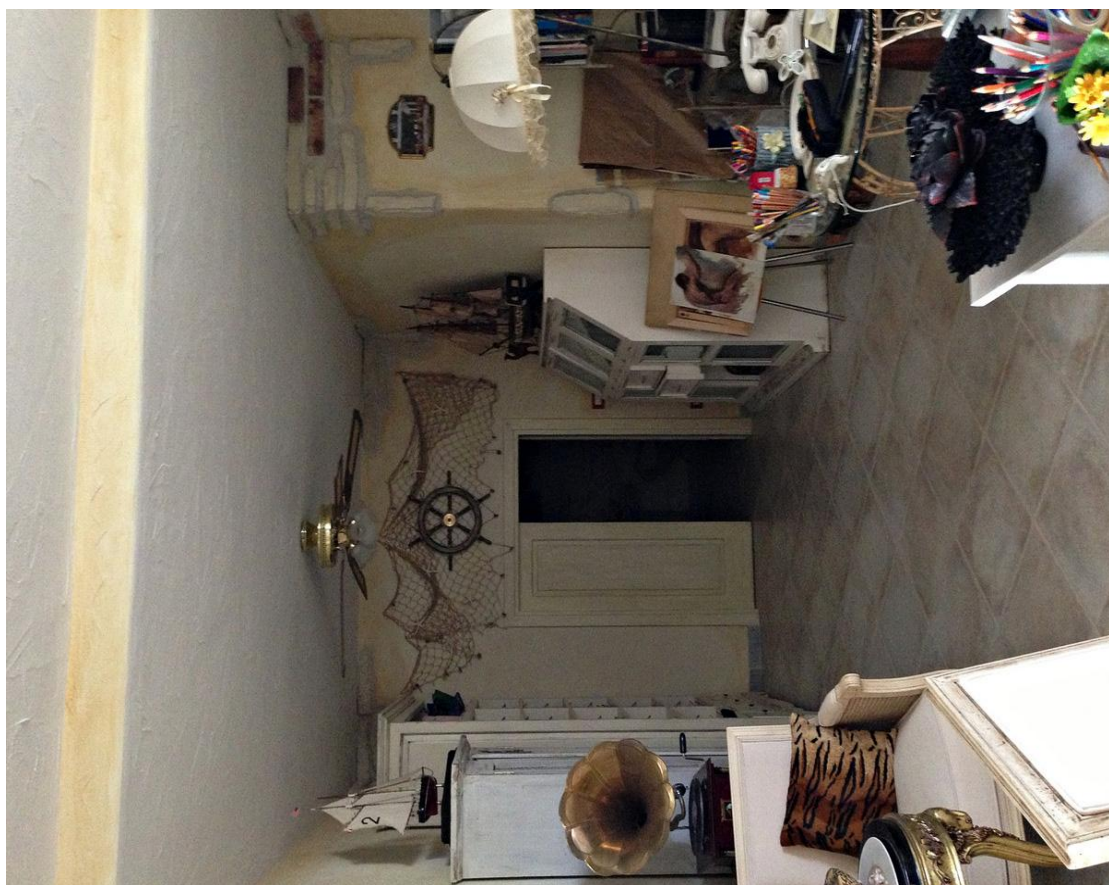
34



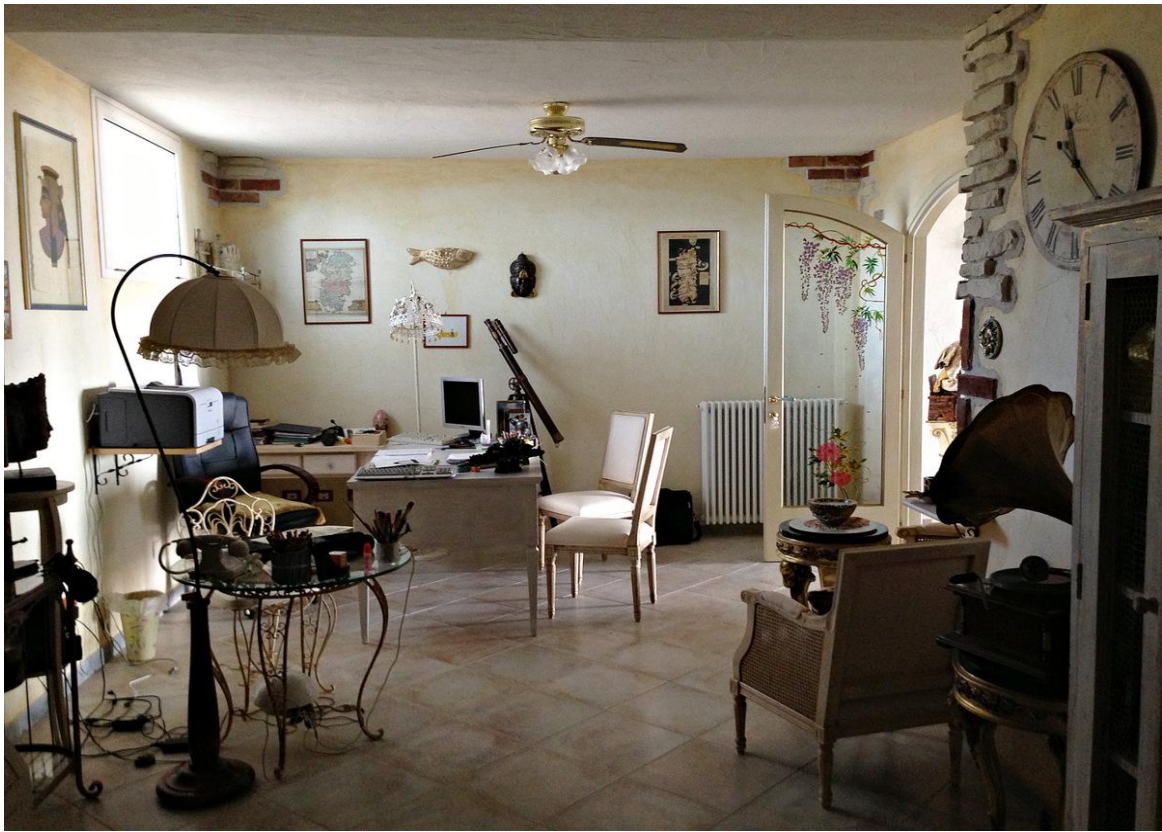
35



36



37



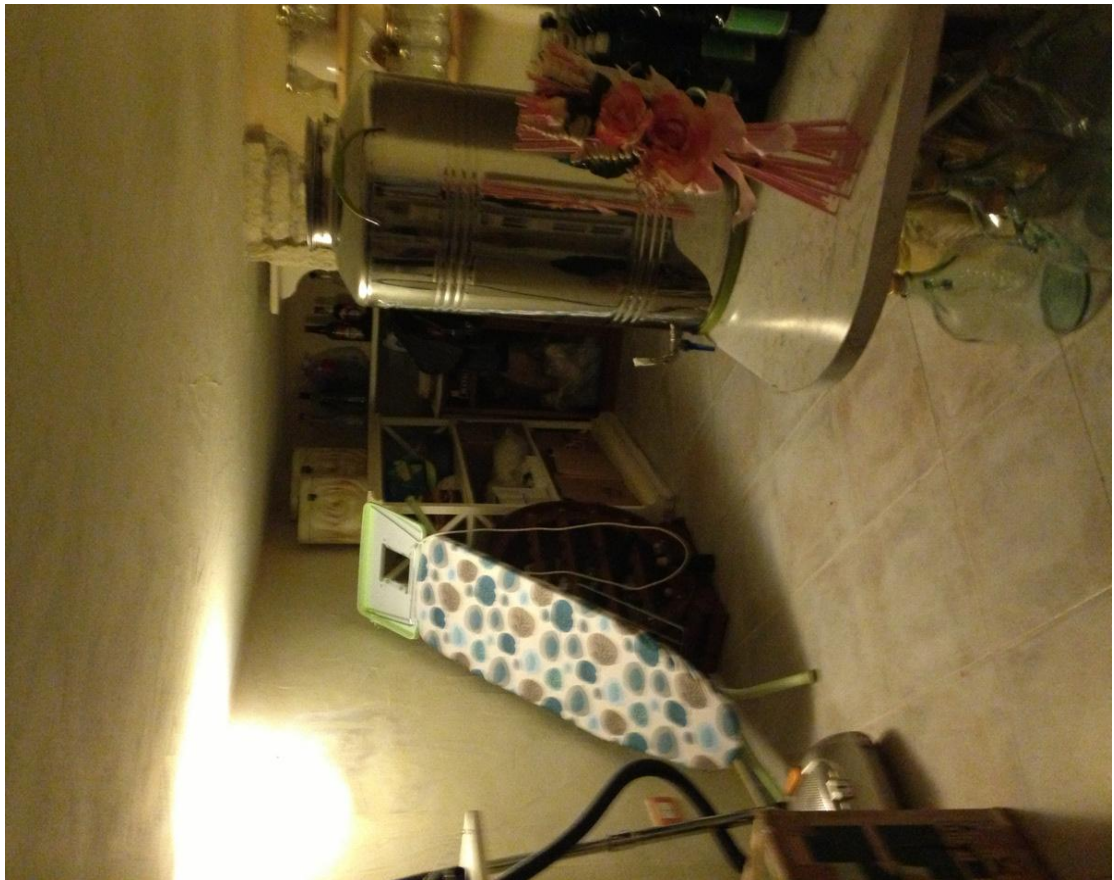
38



39



40



41



42



43



44

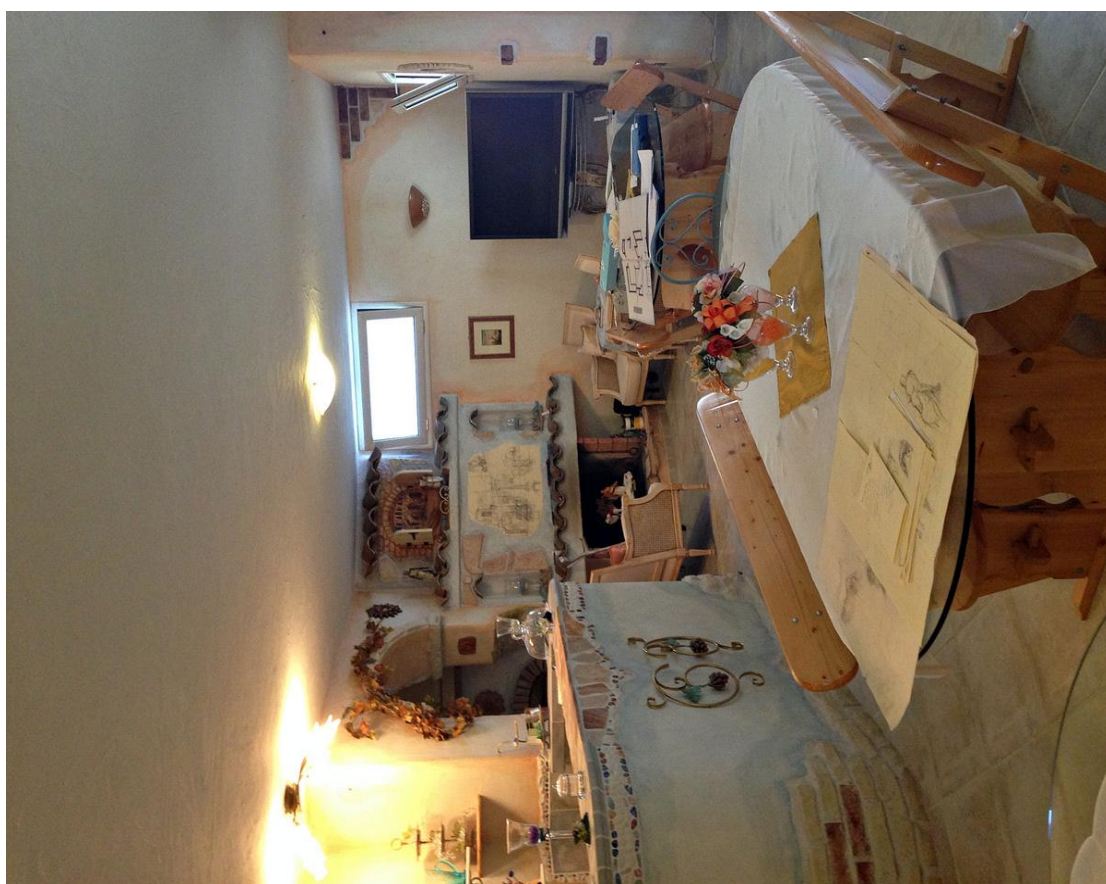


45





46



47



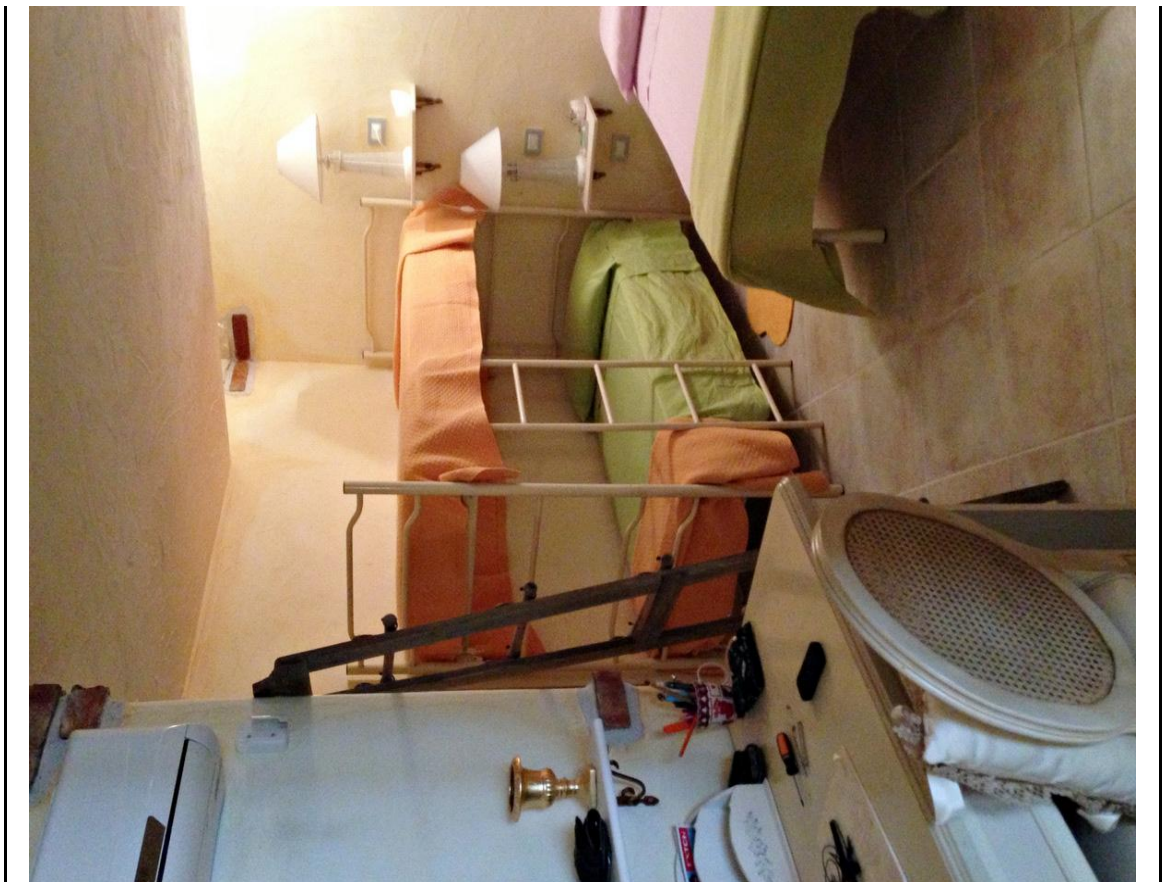
48



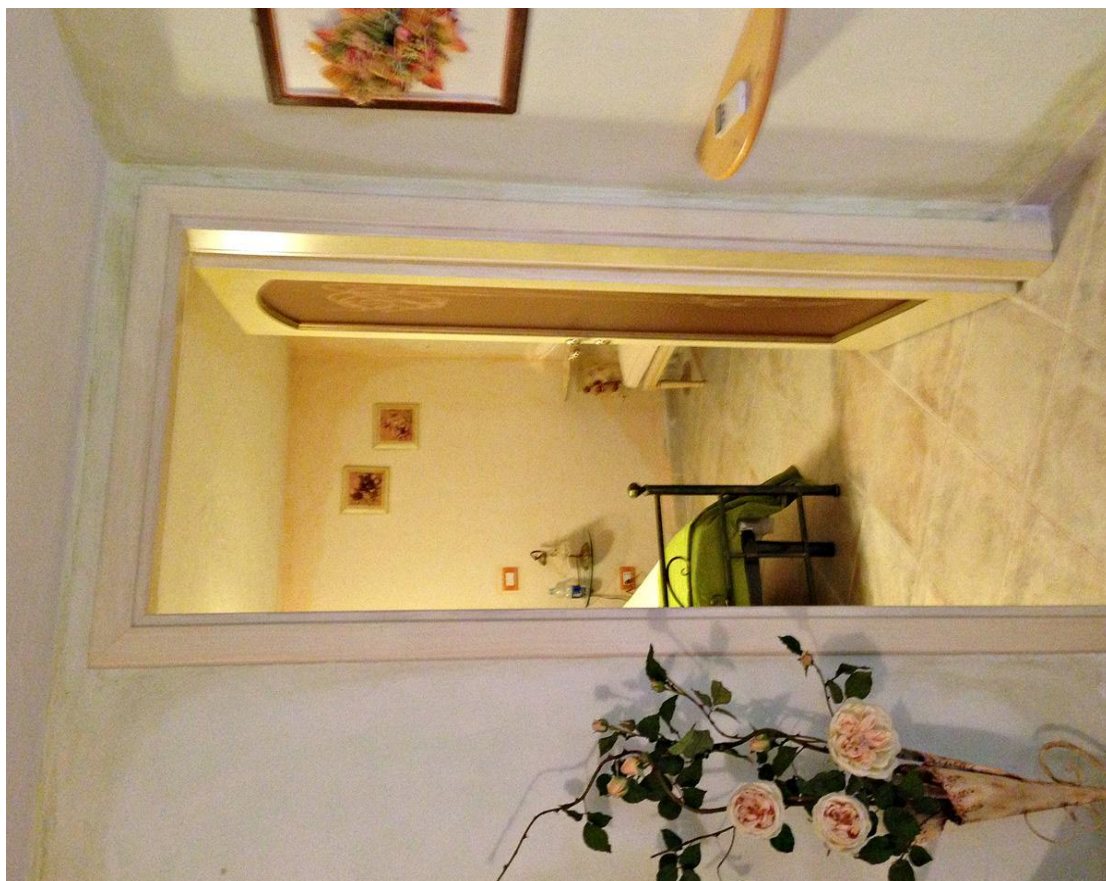
49



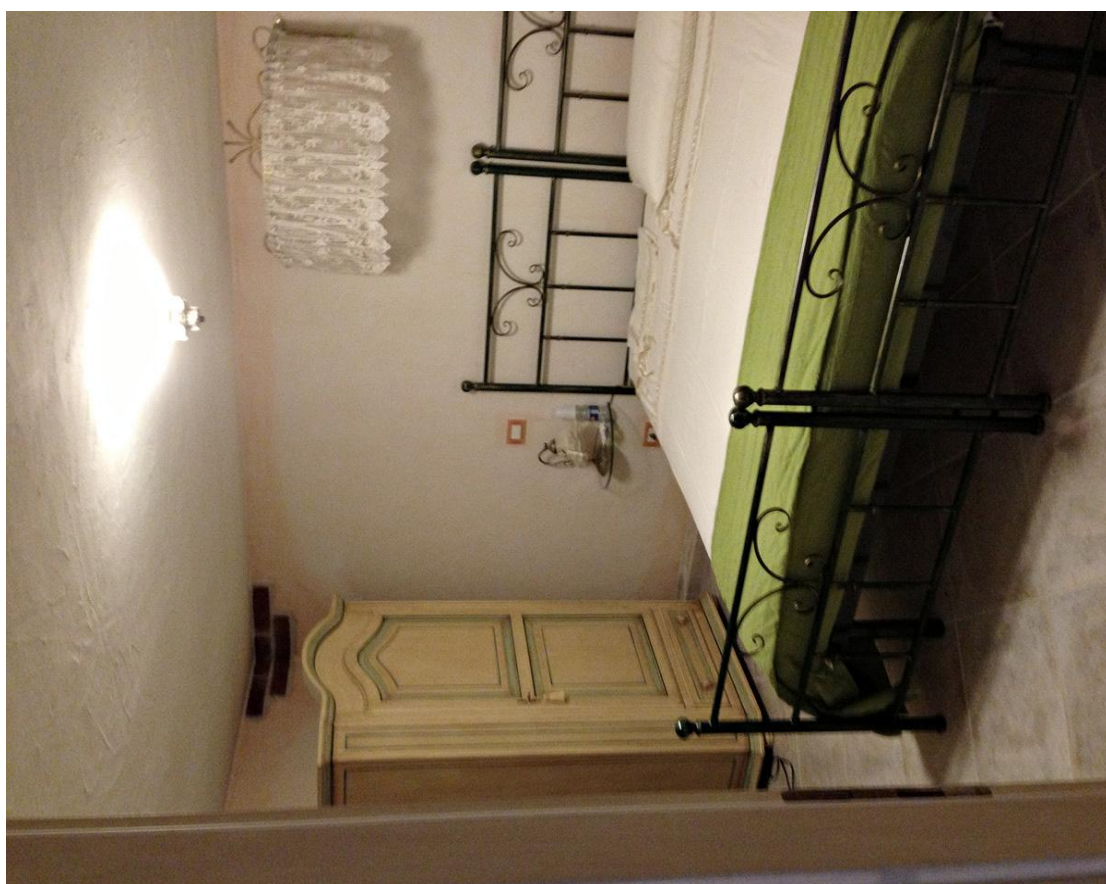
50



51



52



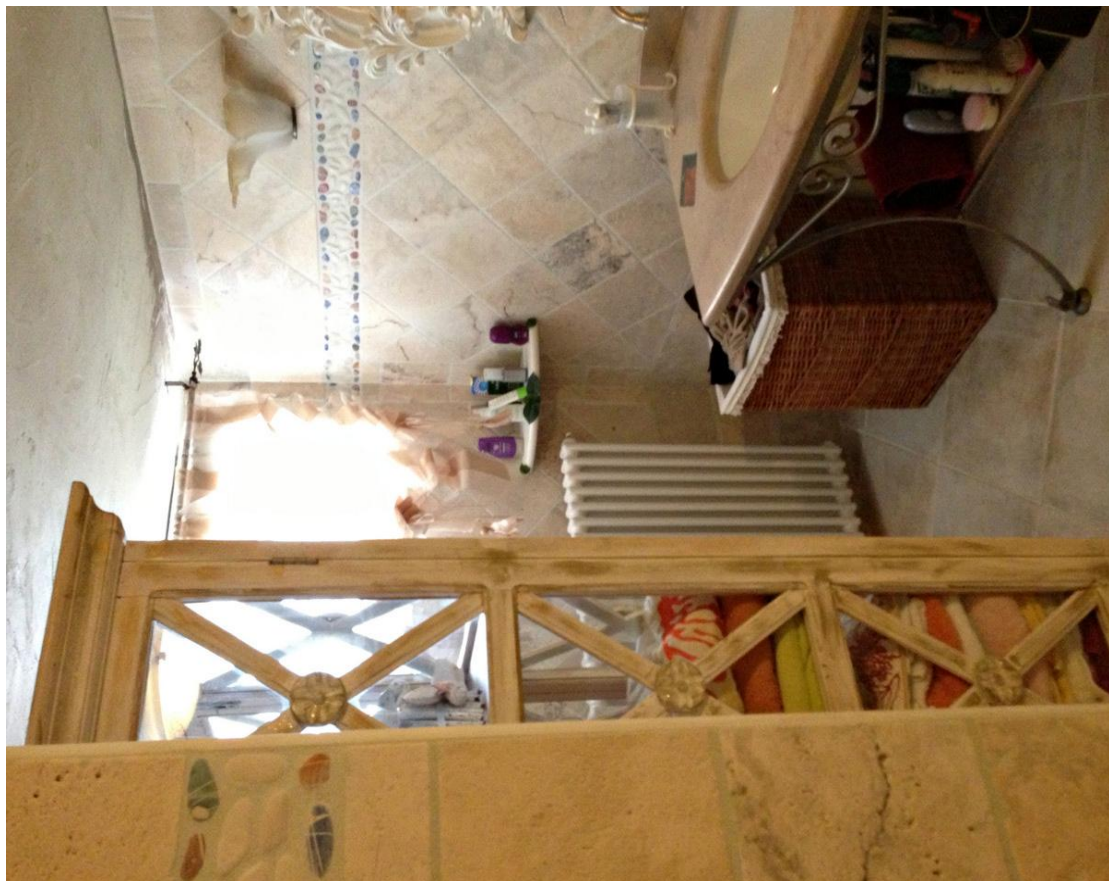
53



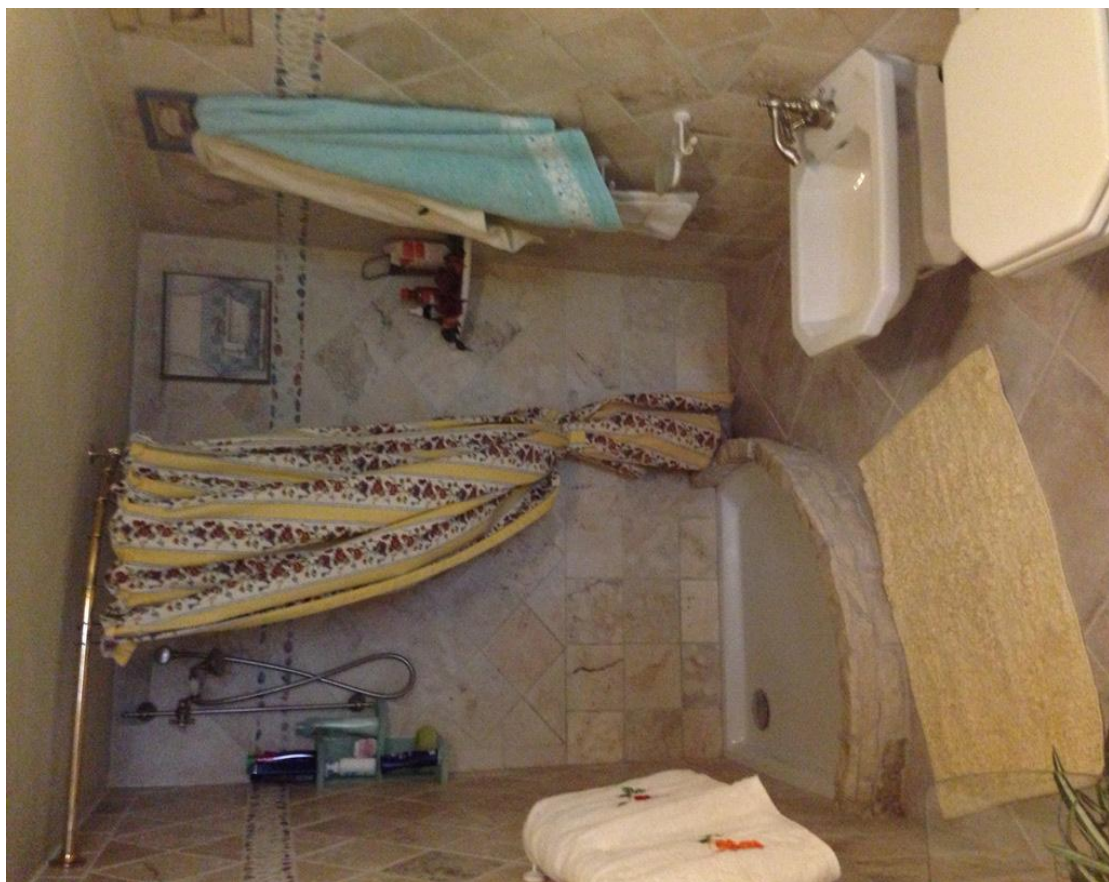
54



55



56



57



58



59



60



61





62



63



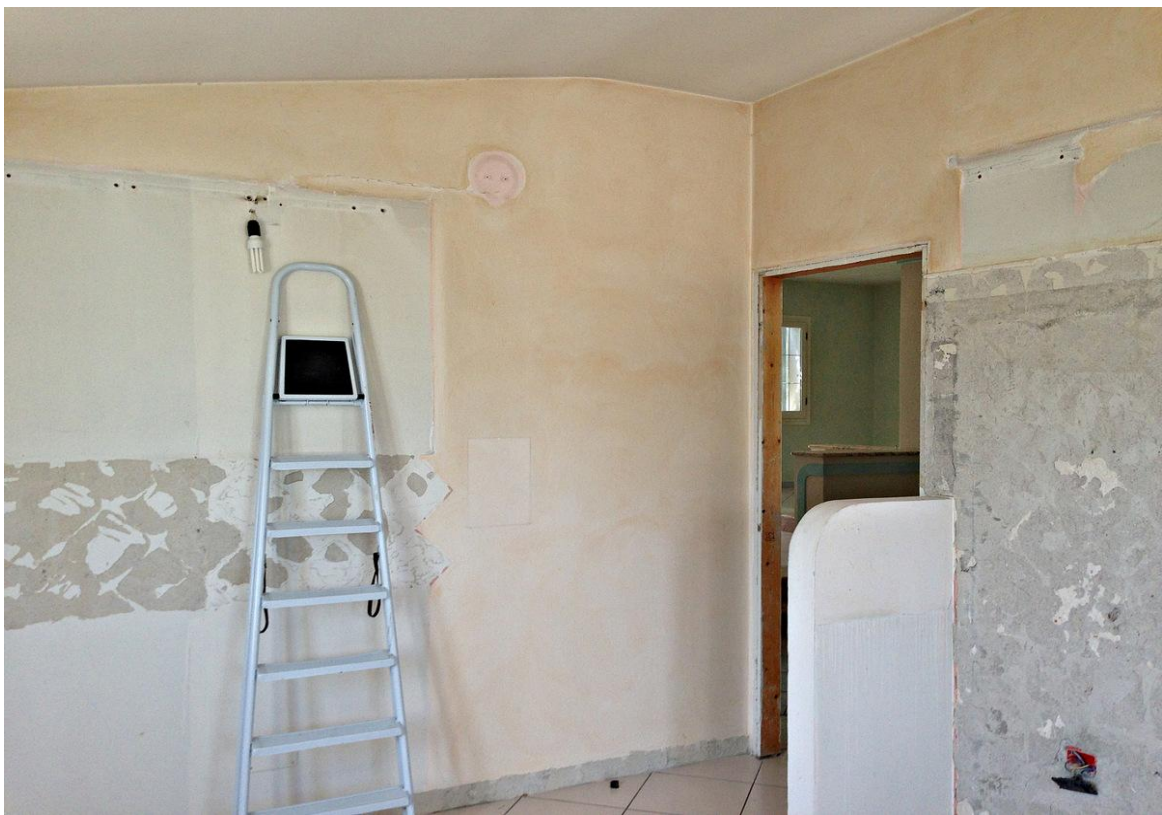
64



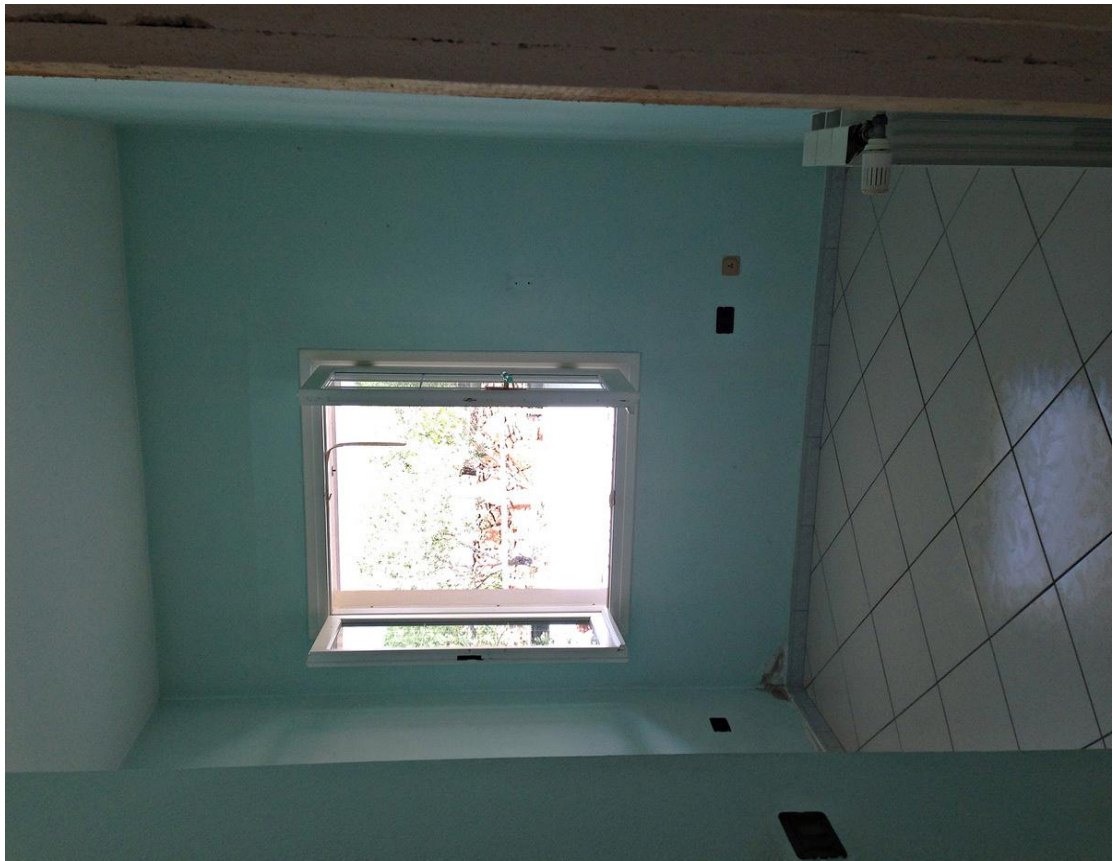
65



66



67



68



69



70



71



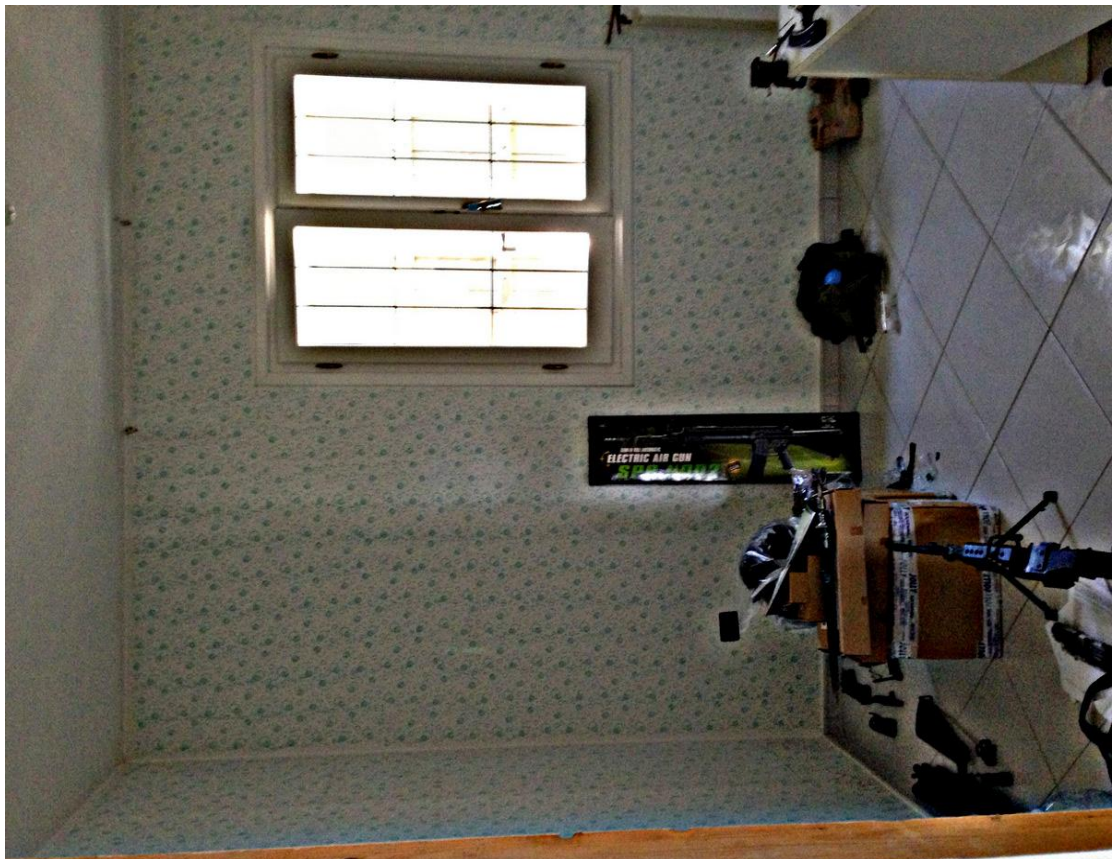
72



73



74



75



76

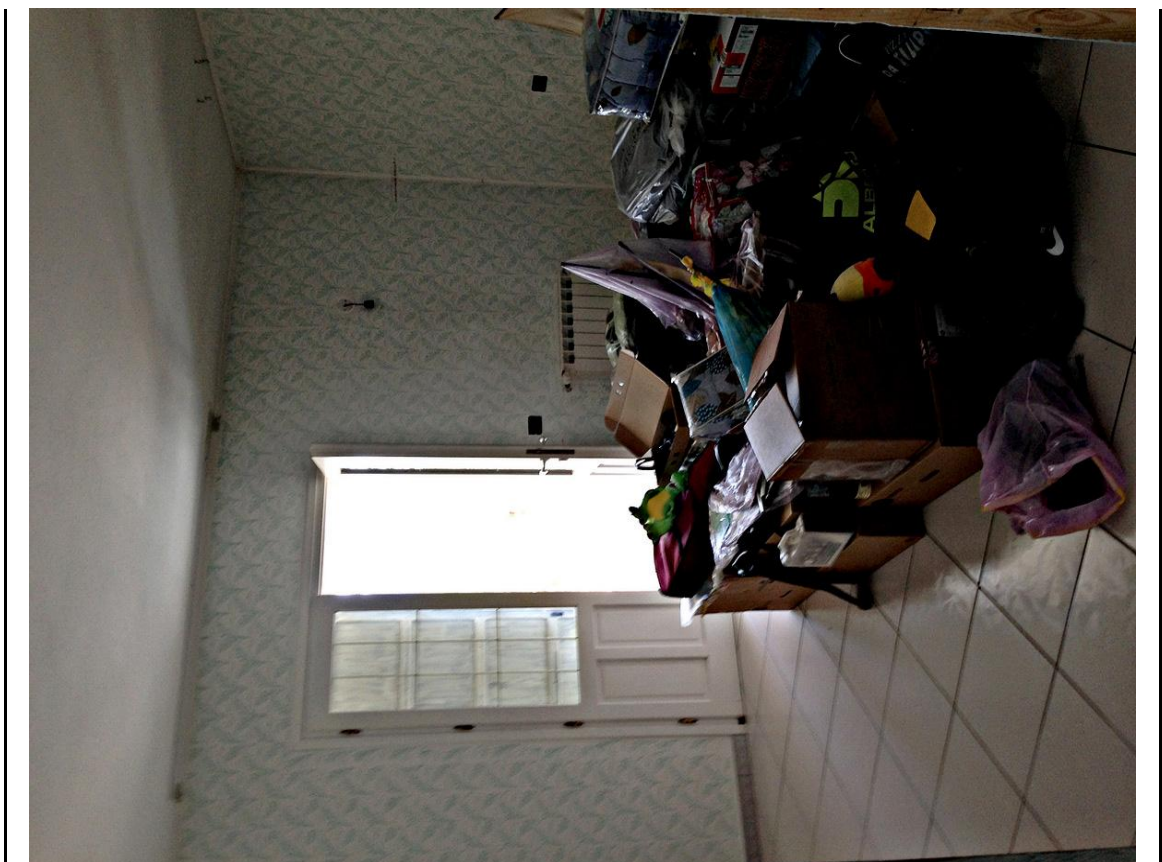


77





78



79