

DOCUMENTAZIONE FOTOGRAFICA



Foto 1 - prospetto principale (sud) da via della Chiesa di S. Angelo

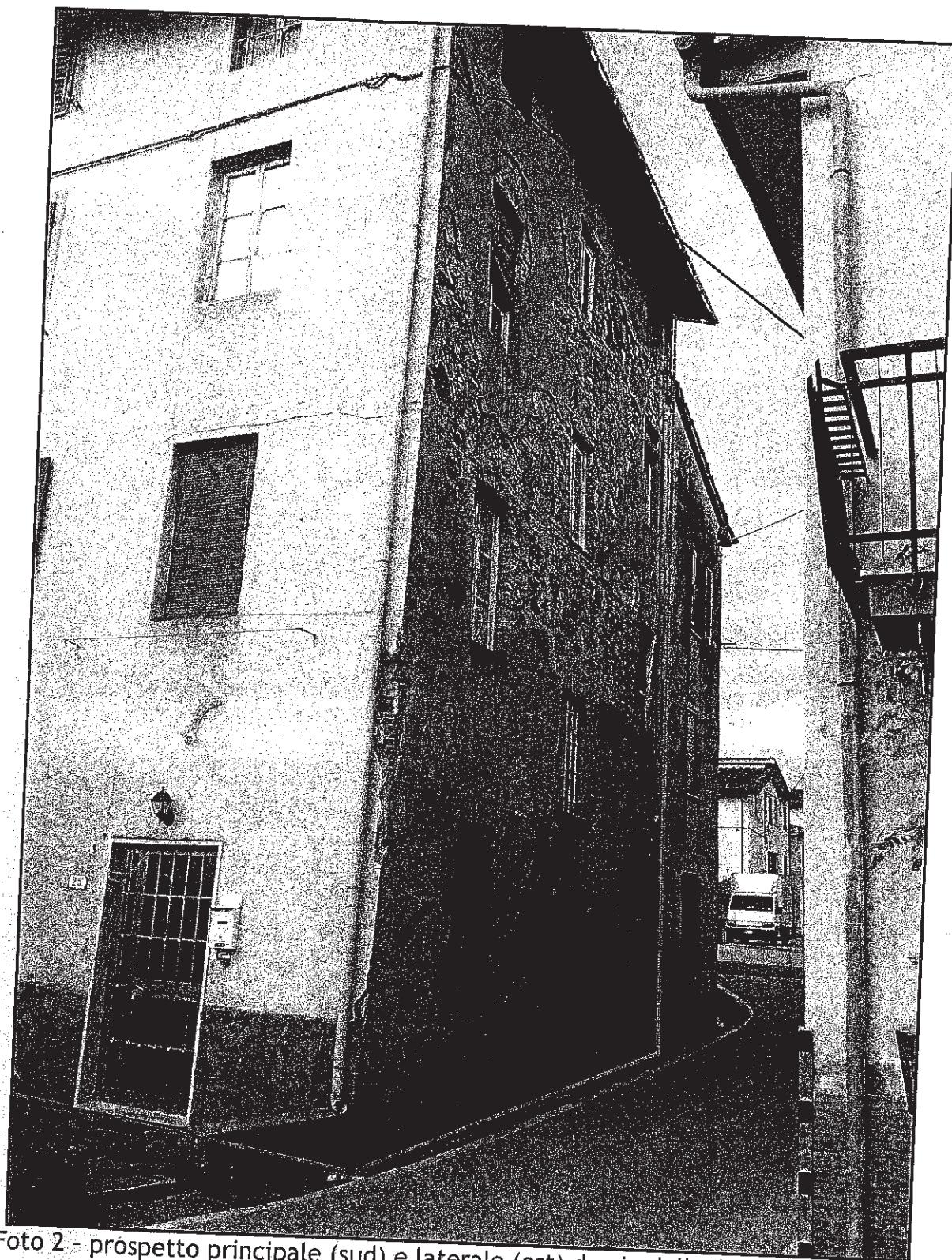


Foto 2 - prospetto principale (sud) e laterale (est) da via della Chiesa di S. Angelo



Foto 3 - Prospetto nord da via della Chiesa di S. Angelo

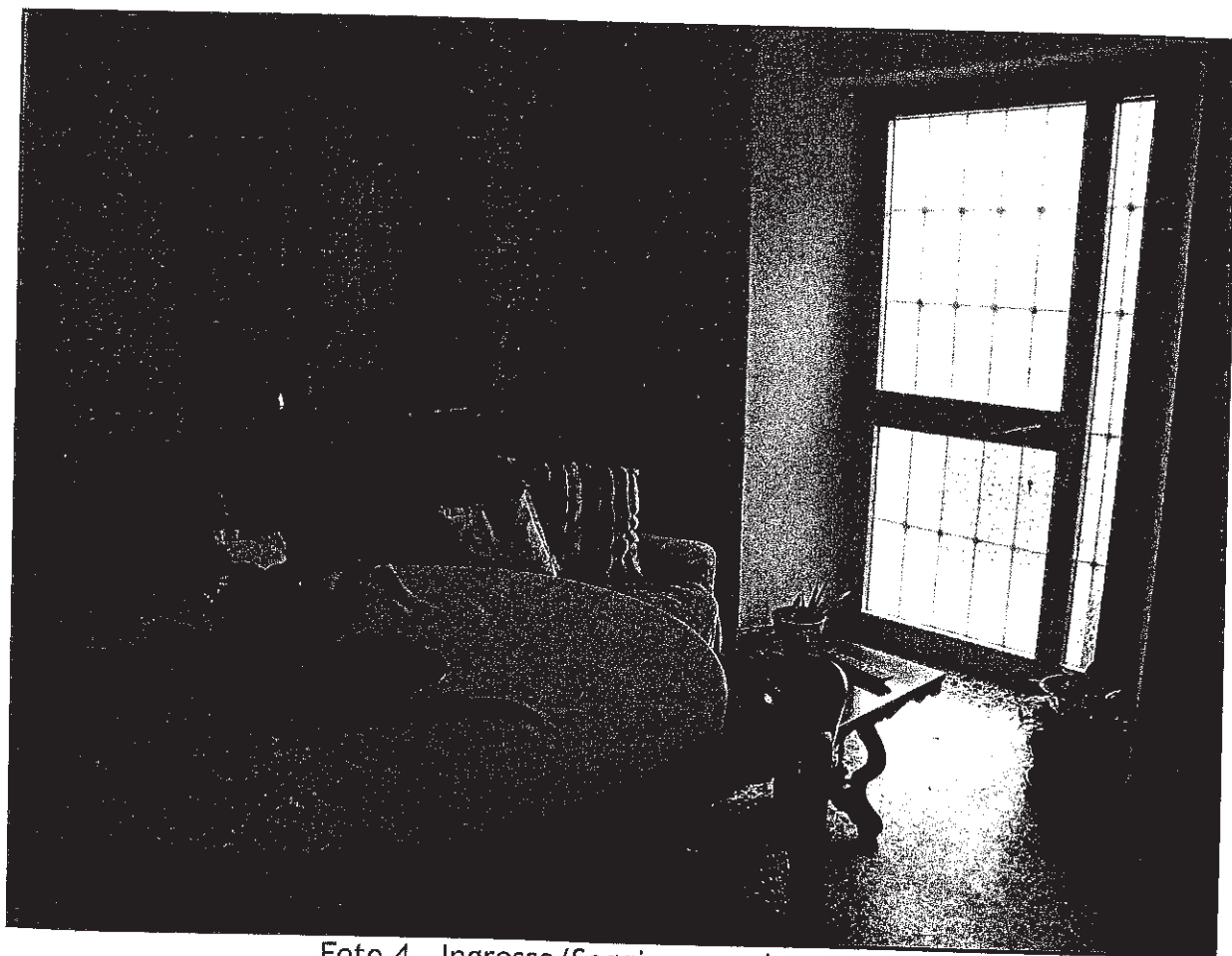


Foto 4 - Ingresso/Soggiorno a piano terra

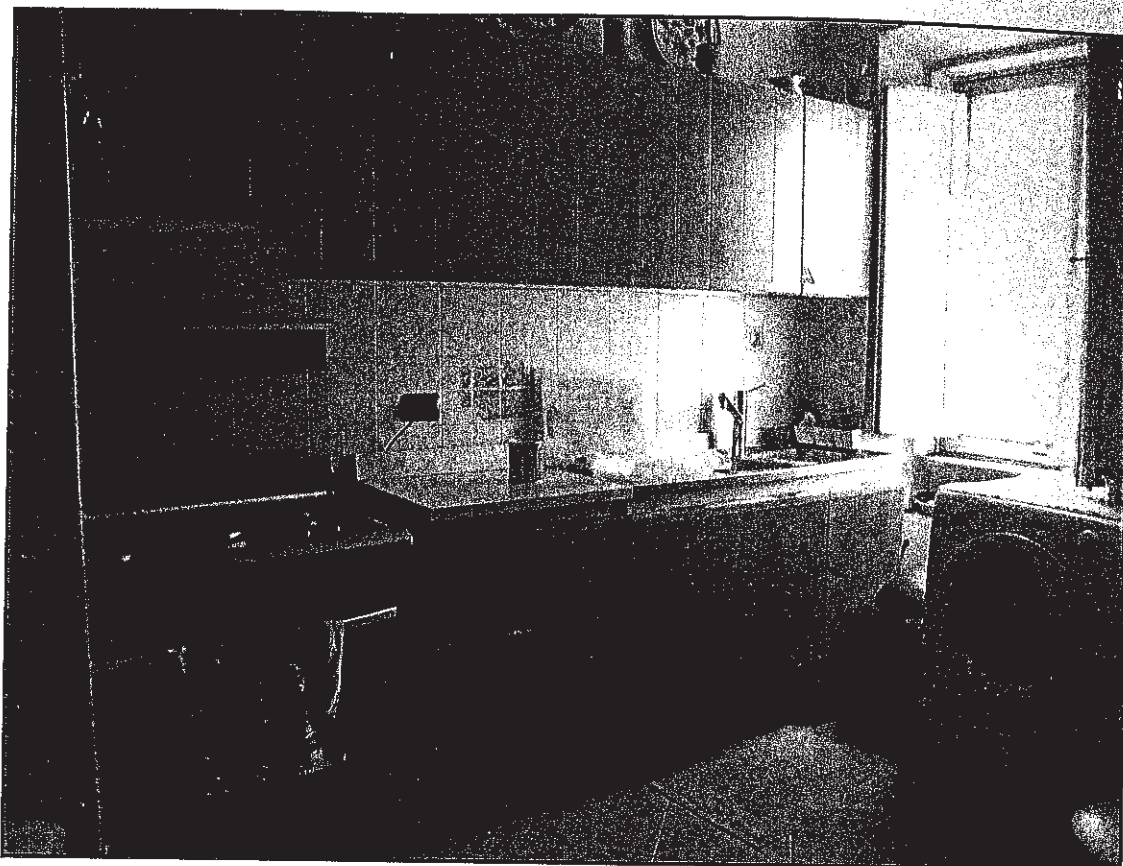


Foto 5 - Cucina a piano terra

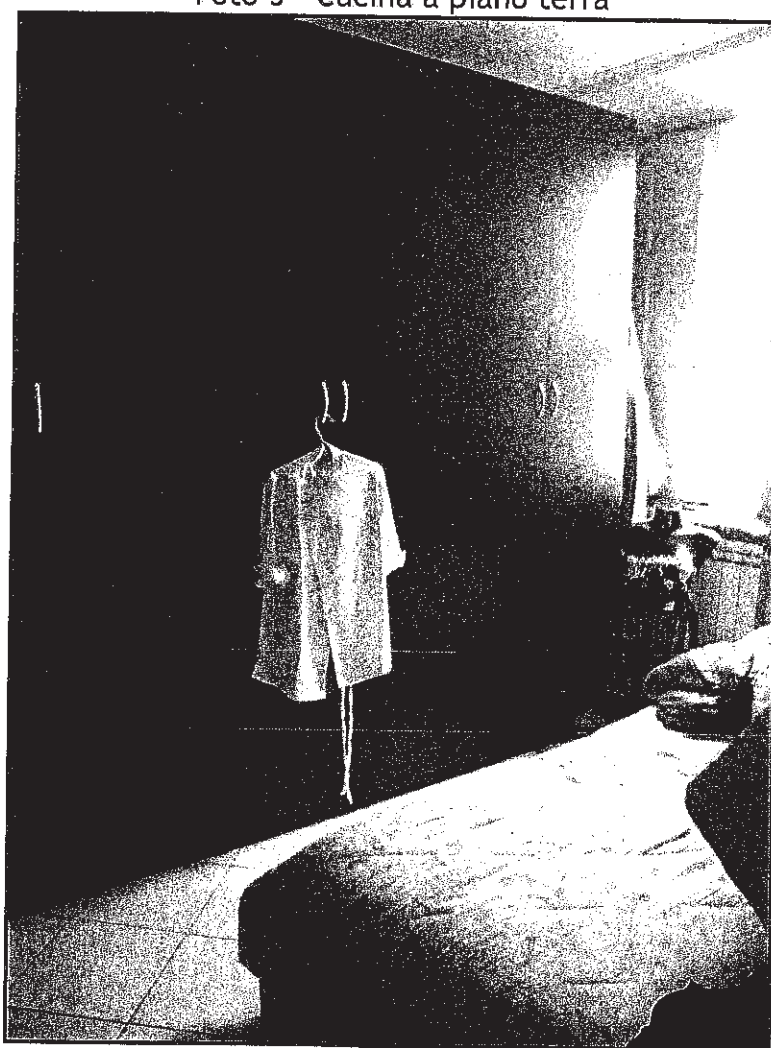


Foto 6 - Camera al piano primo

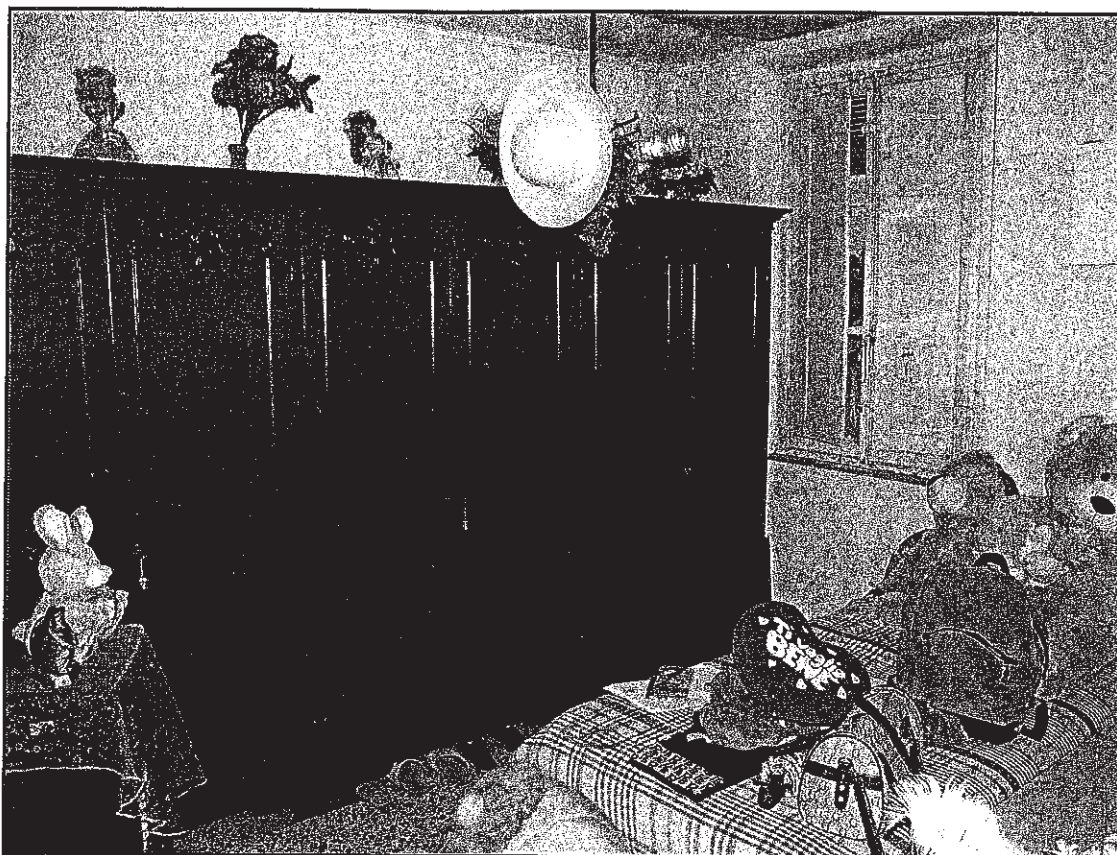


Foto 7 - Camera al piano secondo

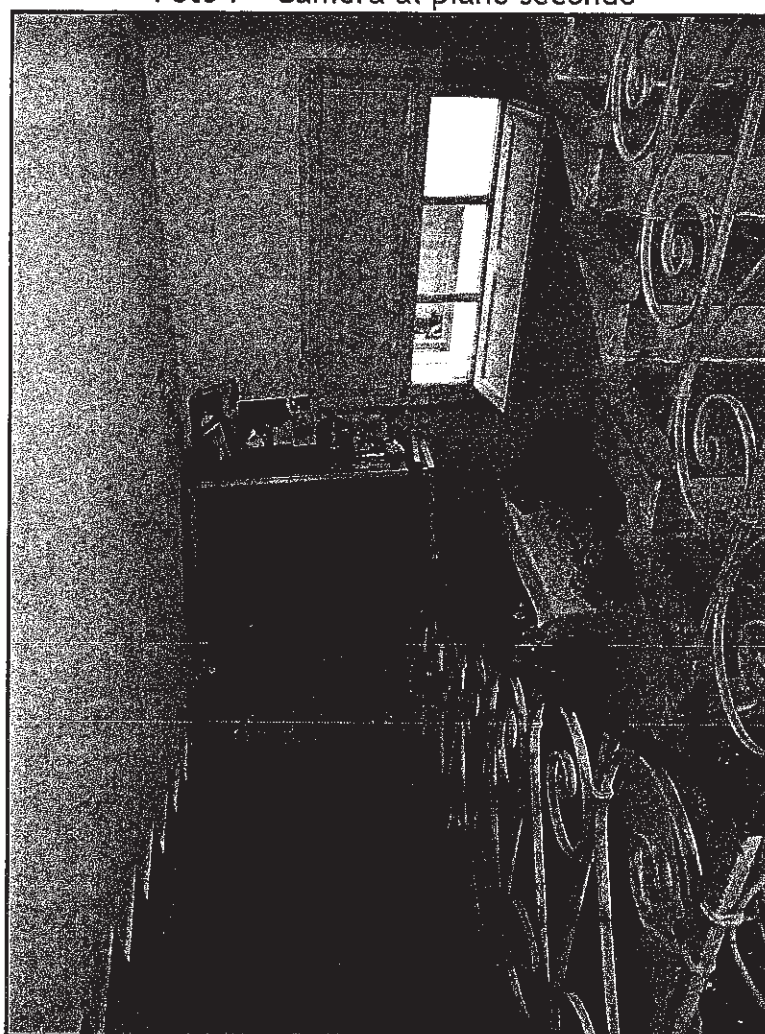


Foto 8 - Scala interna di collegamento

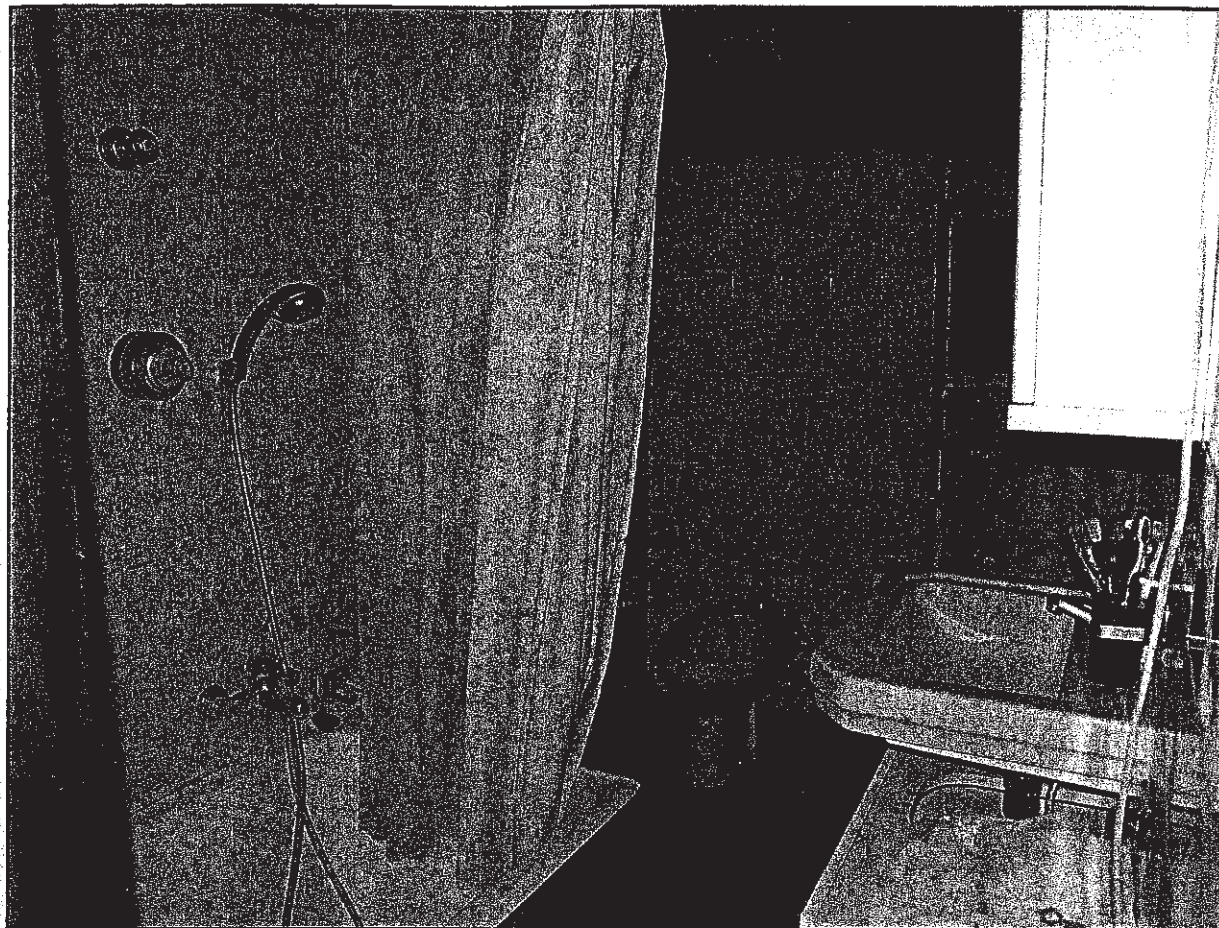


Foto 9 - Bagno al piano sottotetto

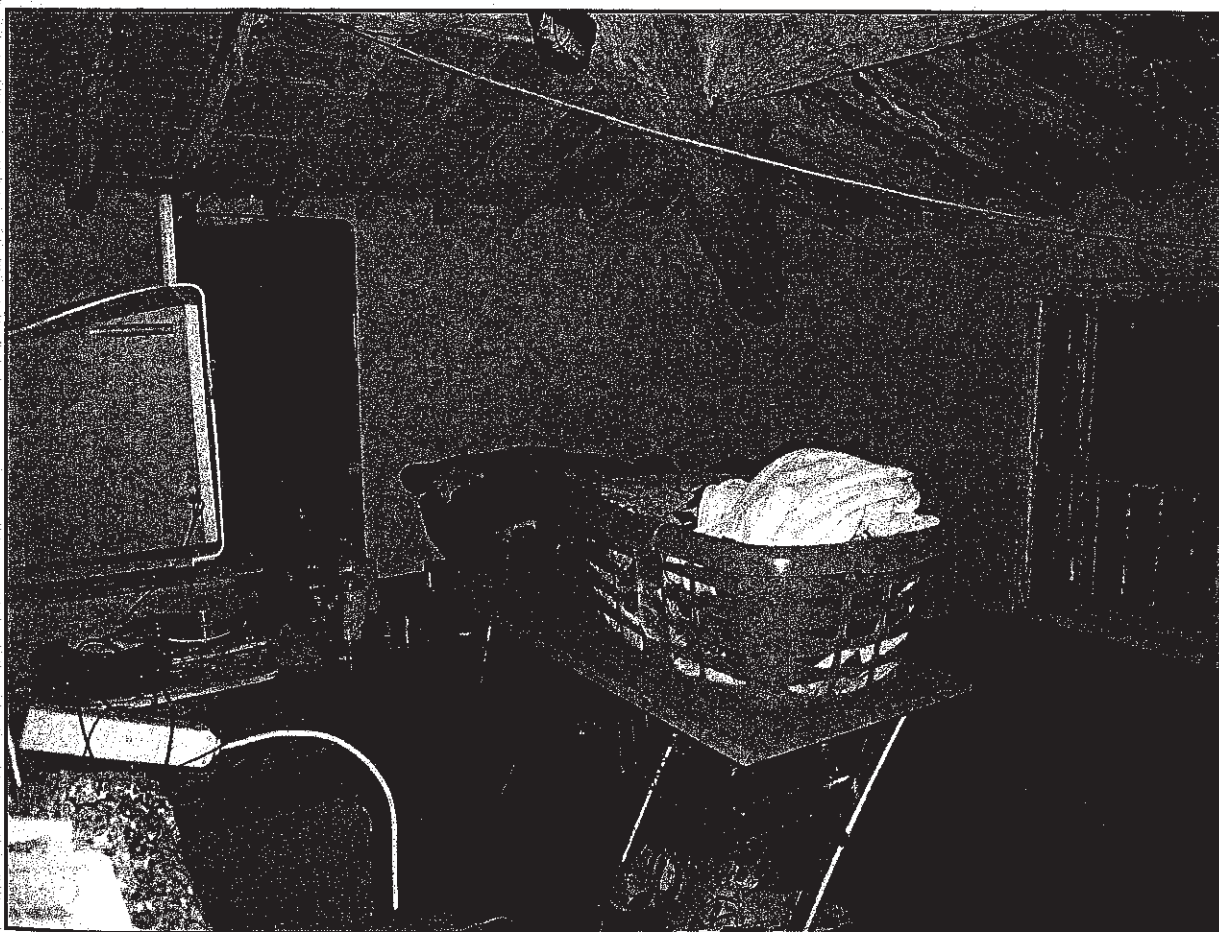


Foto 10 - Locale sottotetto