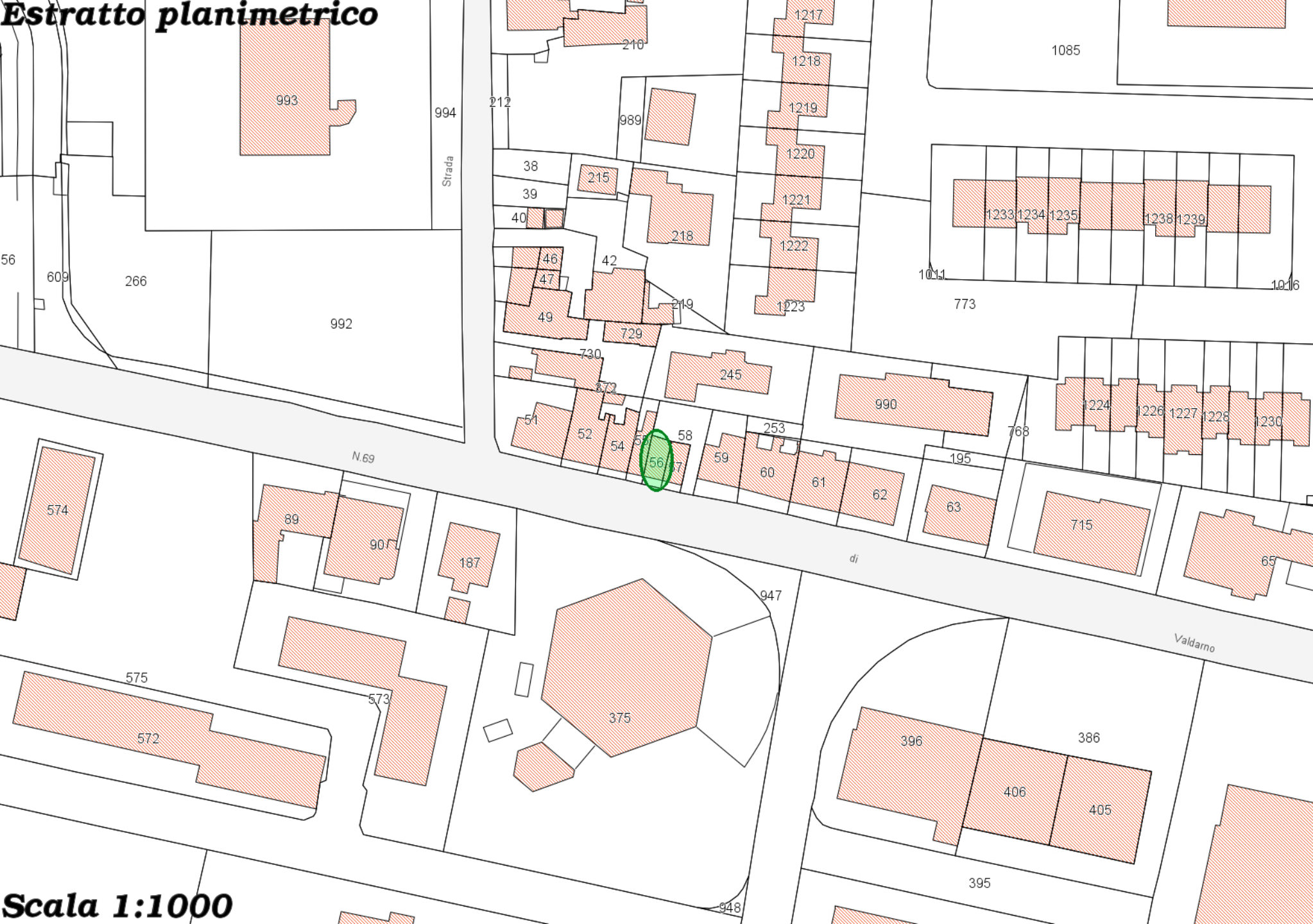


# Estratto planimetrico



Scala 1:1000

**Agenzia del Territorio**  
**CATASTO FABBRICATI**  
**Ufficio Provinciale di**  
**Arezzo**

Dichiarazione protocollo n. AR0088781 del 16/07/2004

Planimetria di u.i.u. in Comune di Arezzo

Loc. San Leo Via Fiorentina

civ. 20

Identificativi Catastali:

Sezione: A

Foglio: 103

Particella: 56

Subalterno: 5

Compilata da:

Ricciarini Lucio

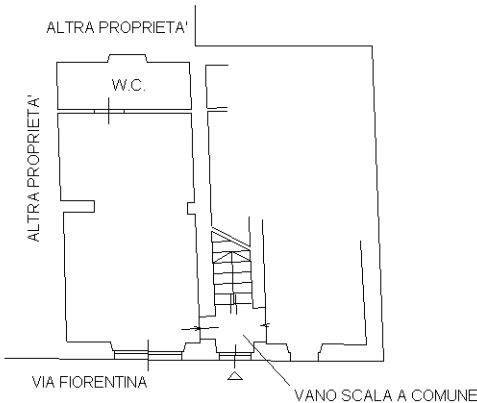
Iscritto all'albo:  
Geometri

Prov. Arezzo

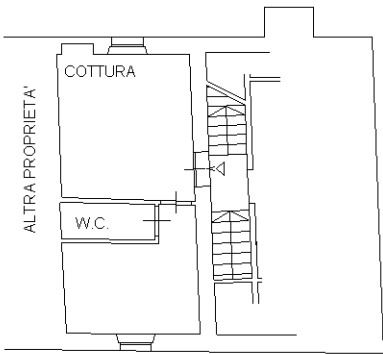
N. 865

Scheda n. 1

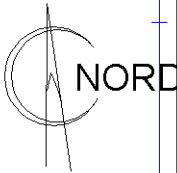
Scala 1:200



PIANO TERRA H: 2.20

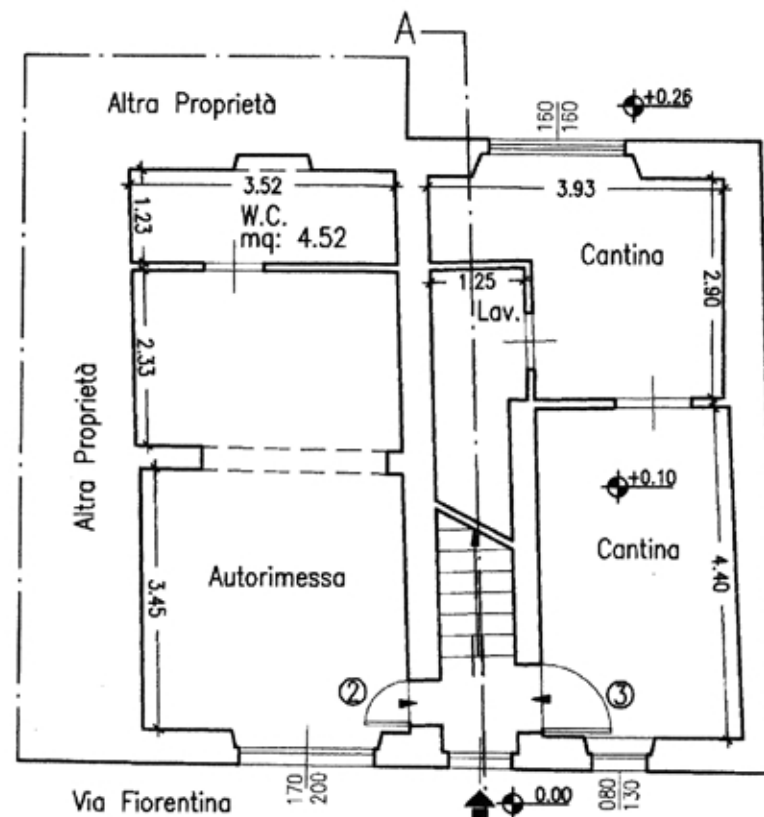


PIANO PRIMO H: 2.45

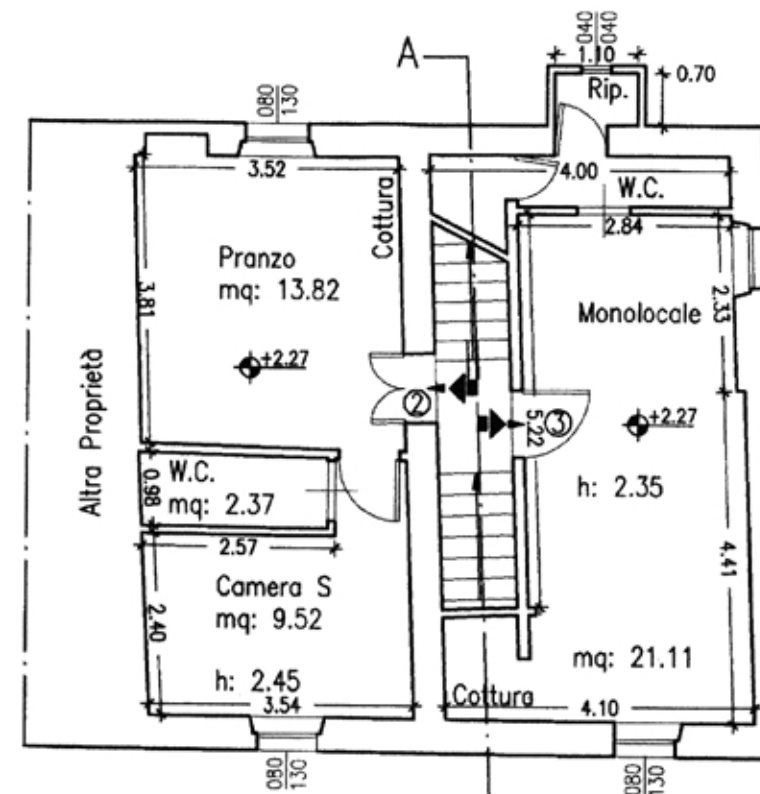


Catasto dei Fabbricati - Situazione al 24/11/2015 - Comune di AREZZO (A390) - < Sez.Urb.: A - Foglio: 103 - Particella: 56 - Subalterno: 5 >  
VIA DI SAN LEO n. 20 piano: T-1;

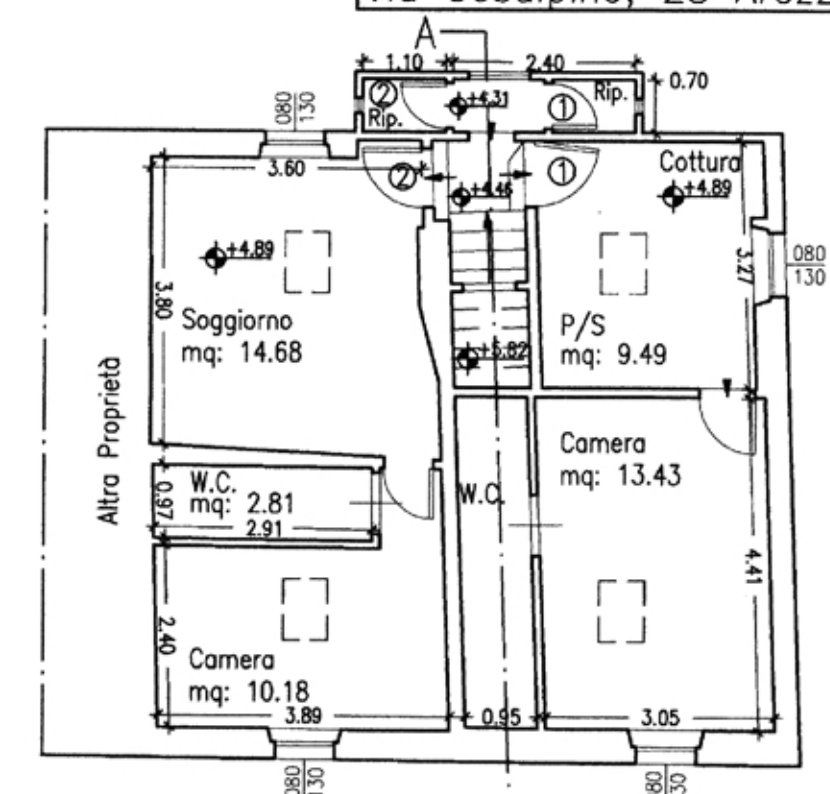
Ultima planimetria in atti



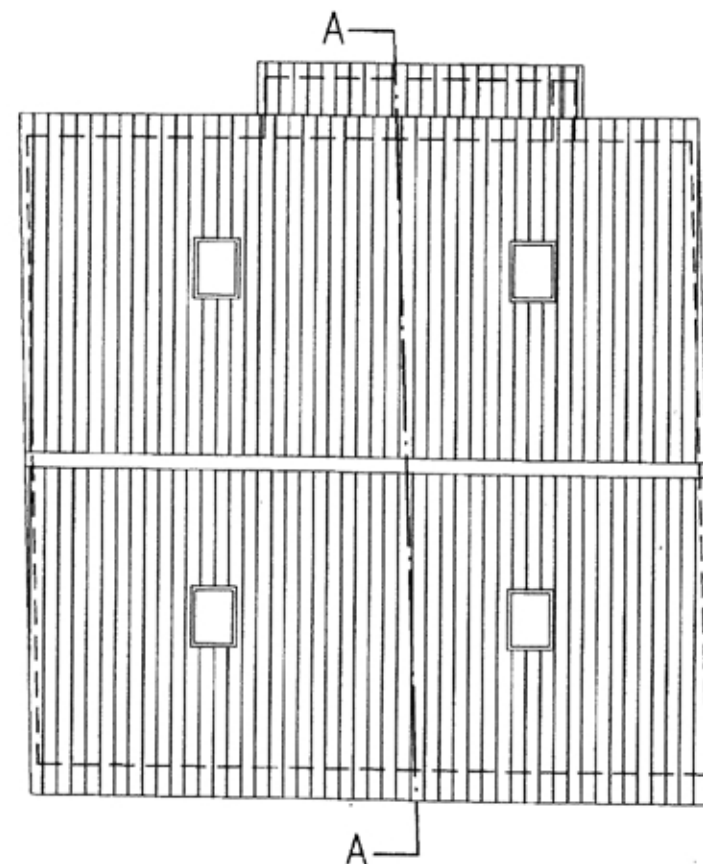
PIANO TERRA H: 2.20



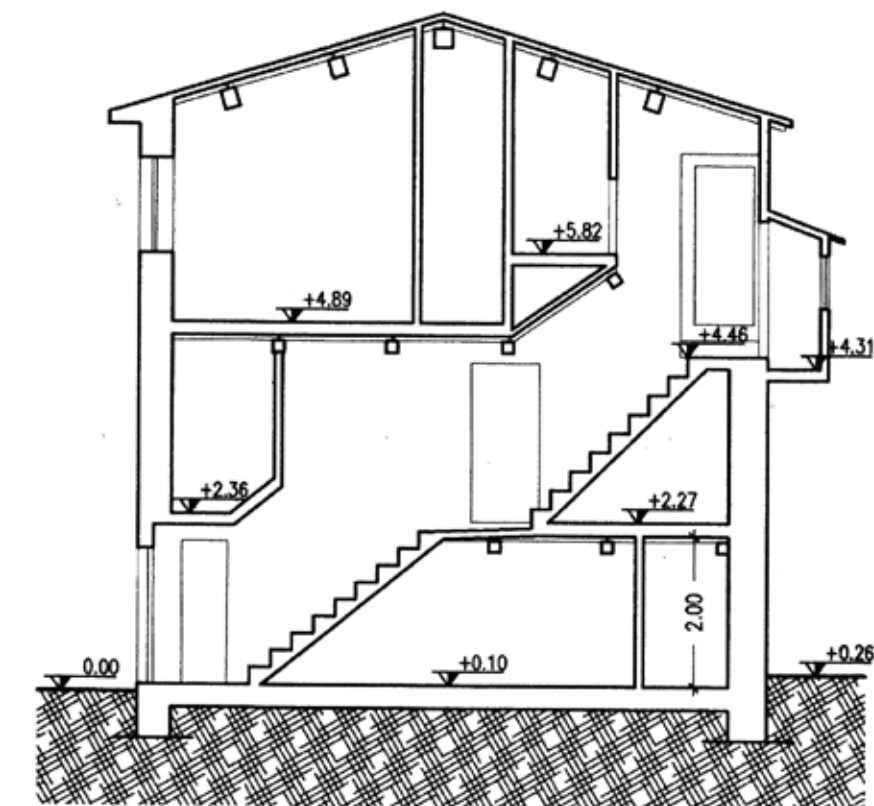
PIANO PRIMO H: 2.36



PIANO SECONDO Hm: 3.16



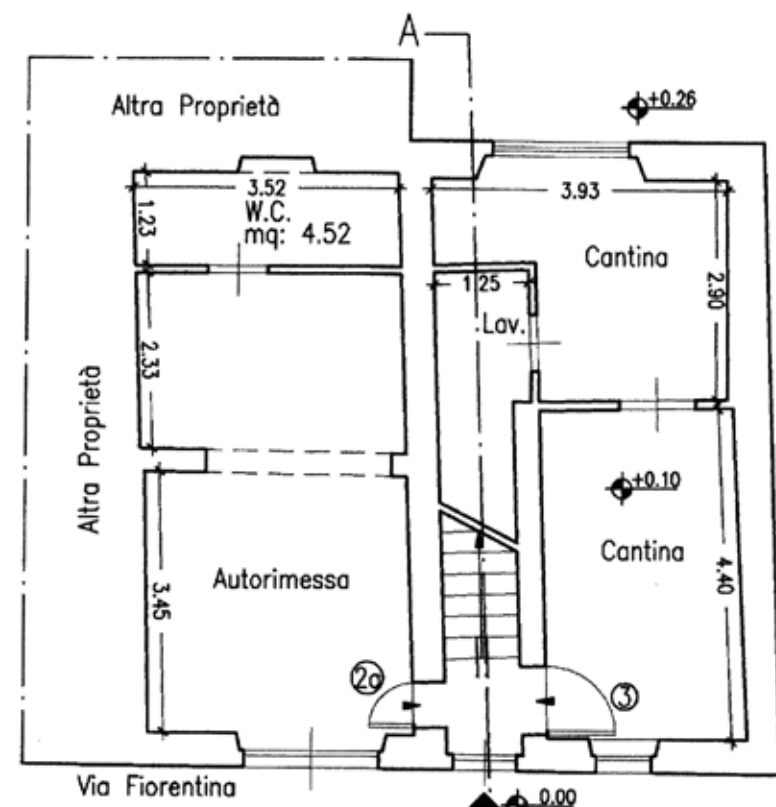
COPERTURA



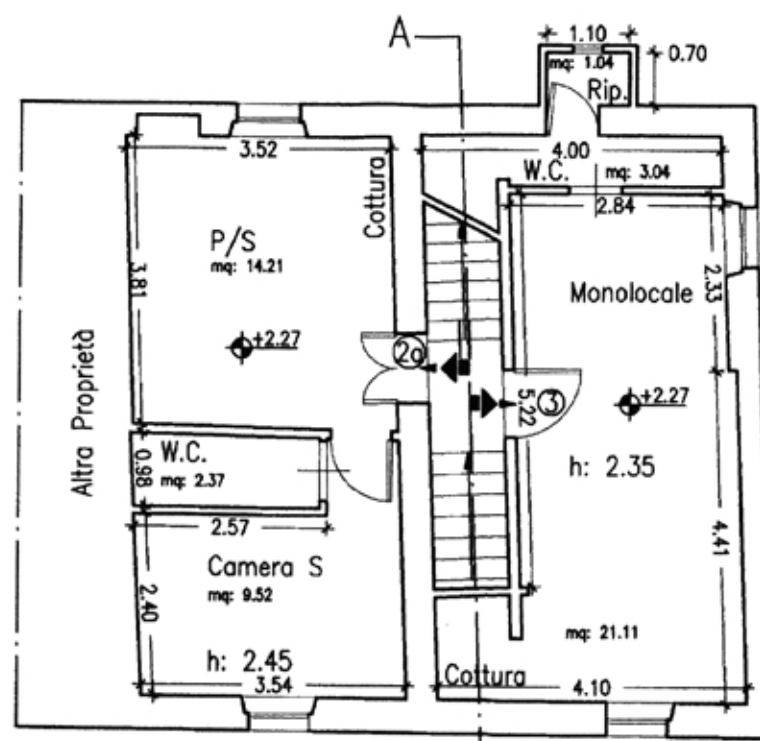
SEZIONE A-A



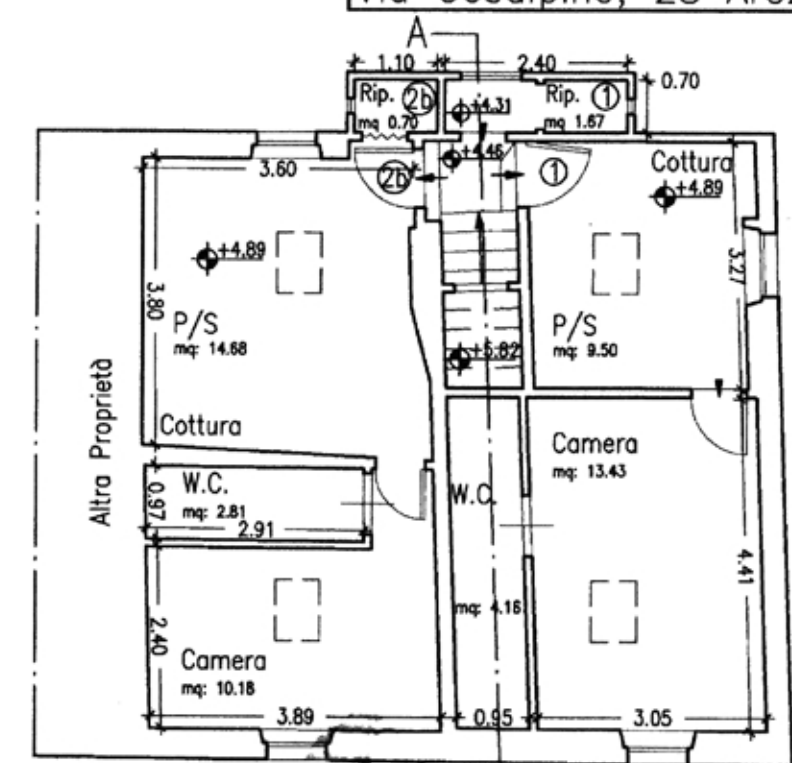




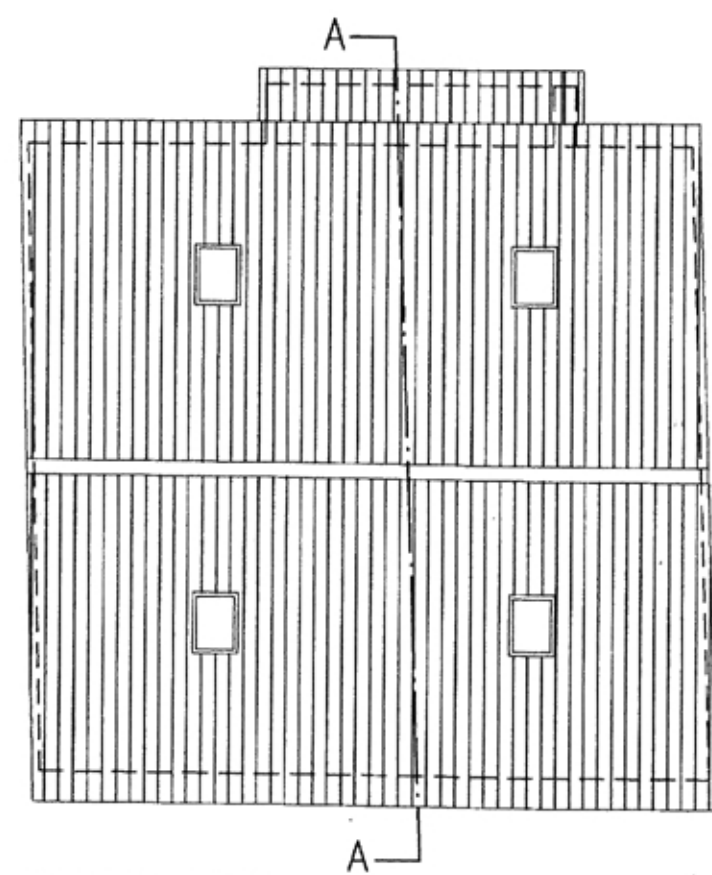
PIANO TERRA H: 2.20



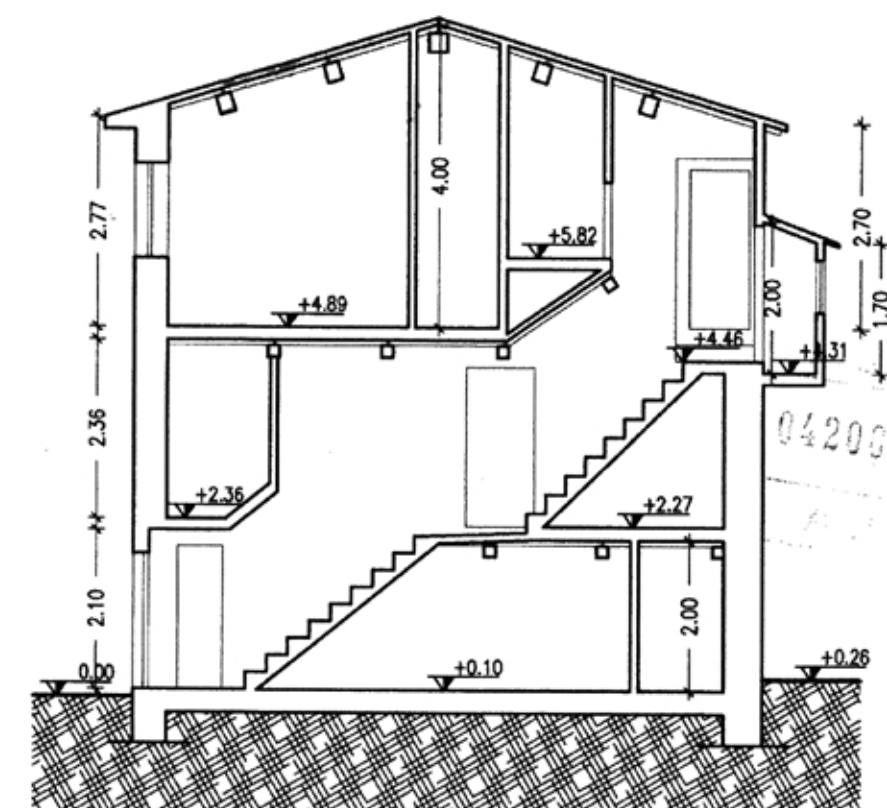
PIANO PRIMO H: 2.36



PIANO SECONDO Hm: 3.16



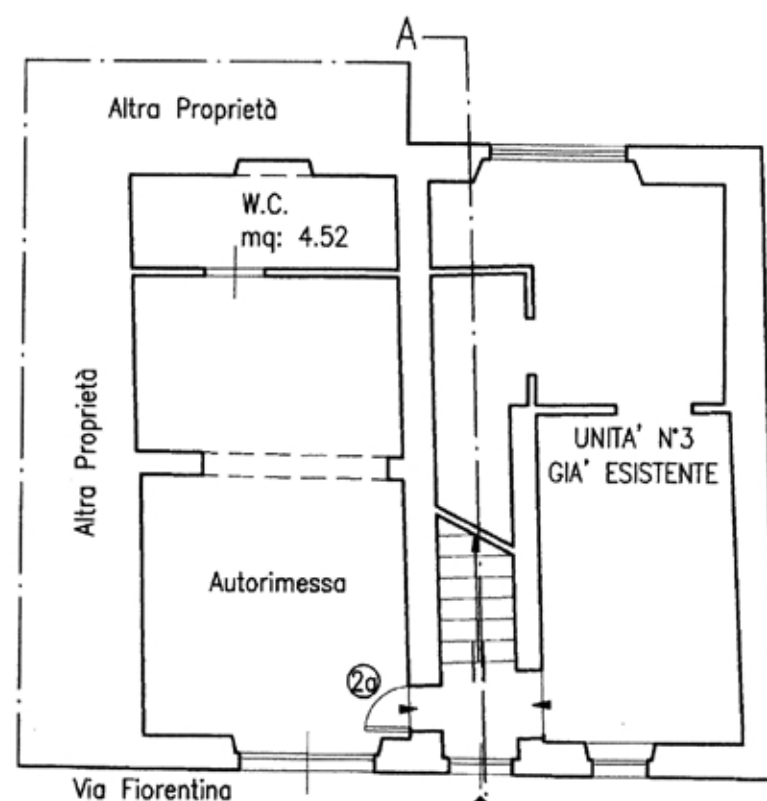
COPERTURA



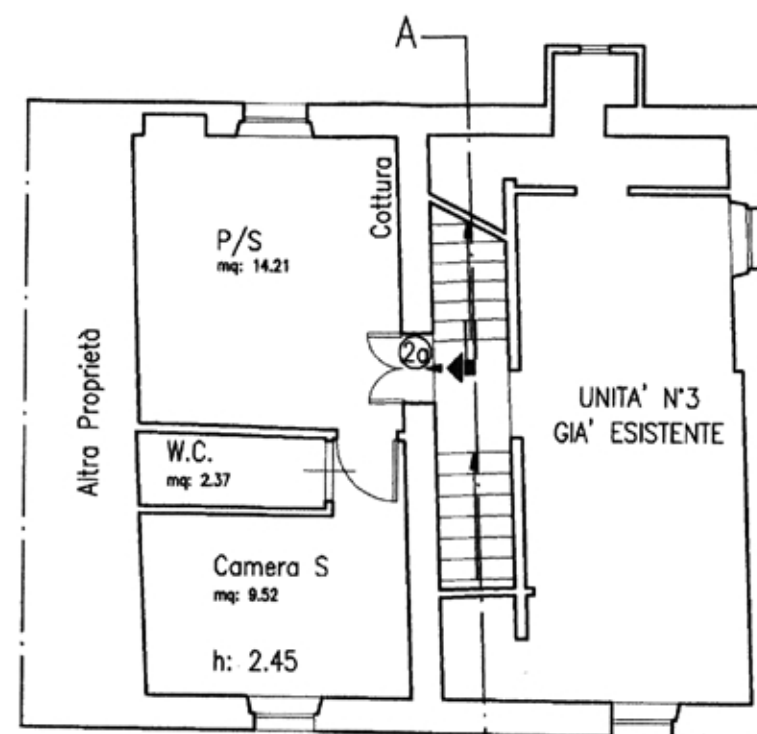
SEZIONE A-A

042003 02 APR 04

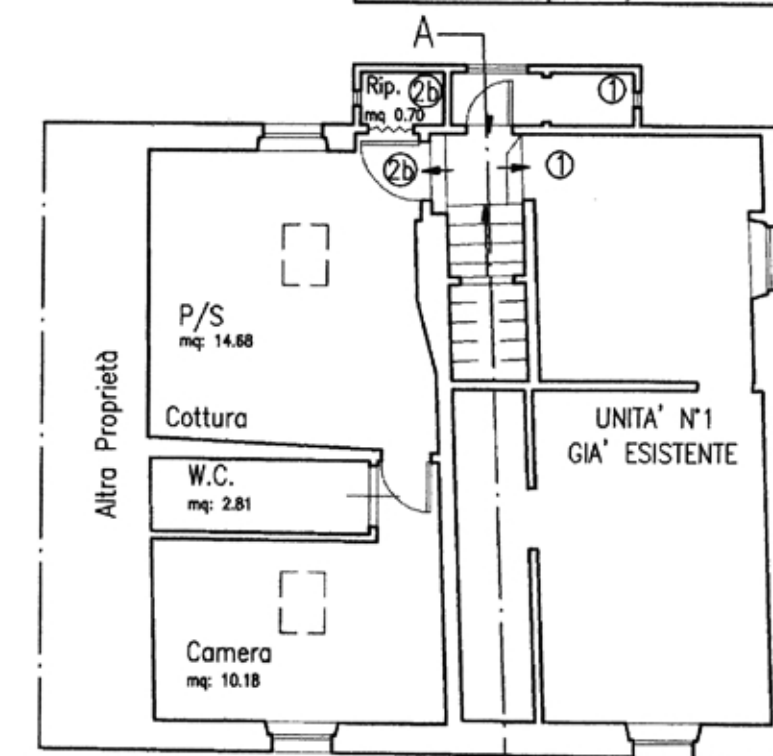




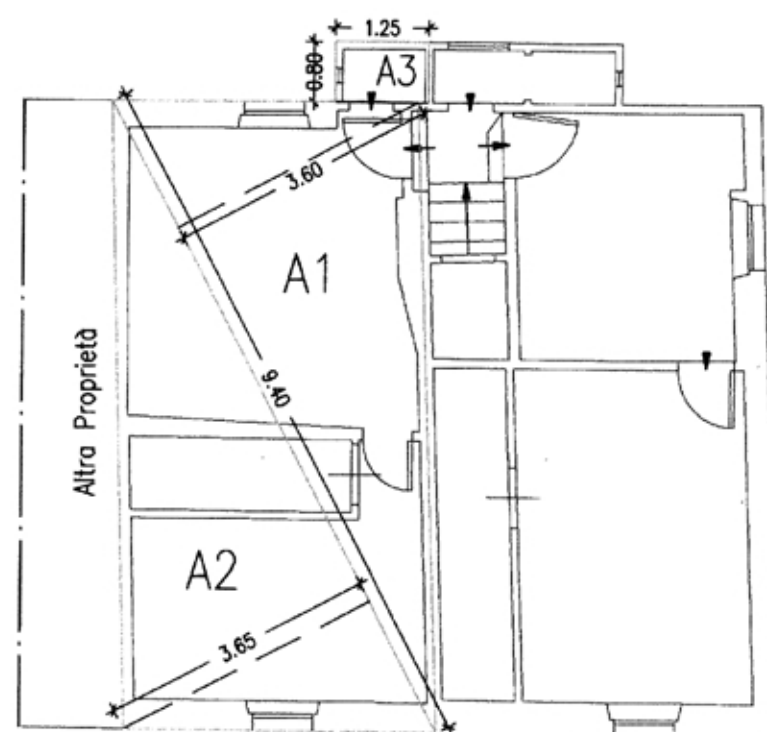
PIANO TERRA H: 2.20



PIANO PRIMO H: 2.36



PIANO SECONDO Hm: 3.16



#### CALCOLO VOLUME

Volume Unità Derivata

A1

$$(9.40 \times 3.60) / 2 = \text{mq } 16.92$$

A2

$$(9.40 \times 3.65) / 2 = \text{mq } 17.16$$

A1+A2

$$16.92 + 17.16 = \text{mq } 34.08$$

$$\text{mq } 34.08 \times h(4.00 + 2.70 + 2.77) / 3 = \text{mc } 107.69$$

A3

$$1.25 \times 0.80 = \text{mq } 1.00$$

$$\text{mq } 1.00 \times h(2.00 + 1.70) / 2 = \text{mc } 1.85$$

Volume Totale

$$107.69 + 1.85 = \text{mc } 109.54$$

#### VERIFICA ART.107 R.I.

Calcolo Superfici Utili

Unità n°2a

$$\text{P/S} = \text{mq } 14.21$$

$$\text{C} = \text{mq } 9.52$$

$$\text{W.C.} = \text{mq } 2.37$$

$$\text{W.C.} = \text{mq } 4.52$$

$$\text{Tot} \quad \text{mq } 30.62 > 28.00$$

Unità n°2b (derivata)

$$\text{P/S} = \text{mq } 14.68$$

$$\text{C} = \text{mq } 10.18$$

$$\text{W.C.} = \text{mq } 2.81$$

$$\text{Rip.} = \text{mq } 0.70$$

$$\text{Tot} \quad \text{mq } 28.37 > 28.00$$