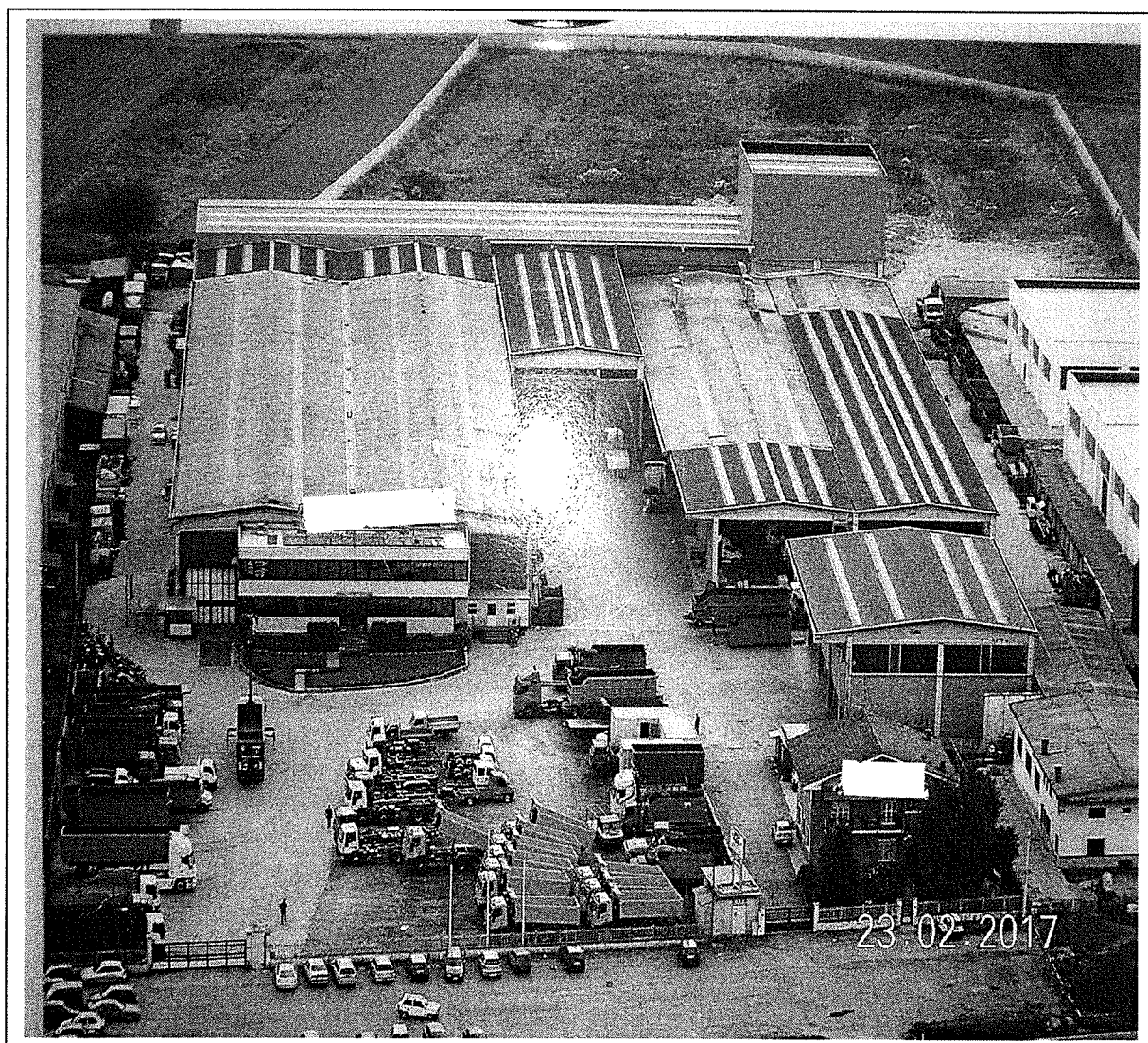


DOCUMENTAZIONE FOTOGRAFICA

Complesso industriale

- Strada Statale n. ° 23 del Sestriere km 29, Scalenghe (TO)



1

Vista aerea del complesso industriale.



2

*Accesso al
complesso.*



3

Piazzale di accesso e di stoccaggio degli allestimenti prodotti.



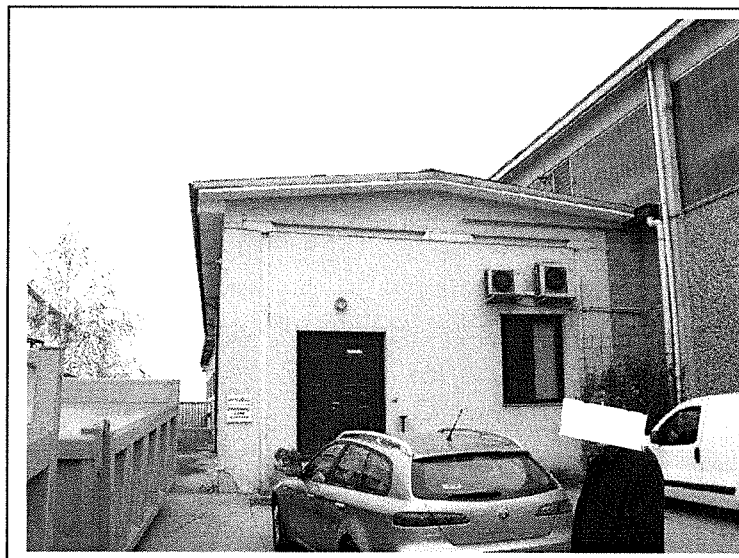
4



5

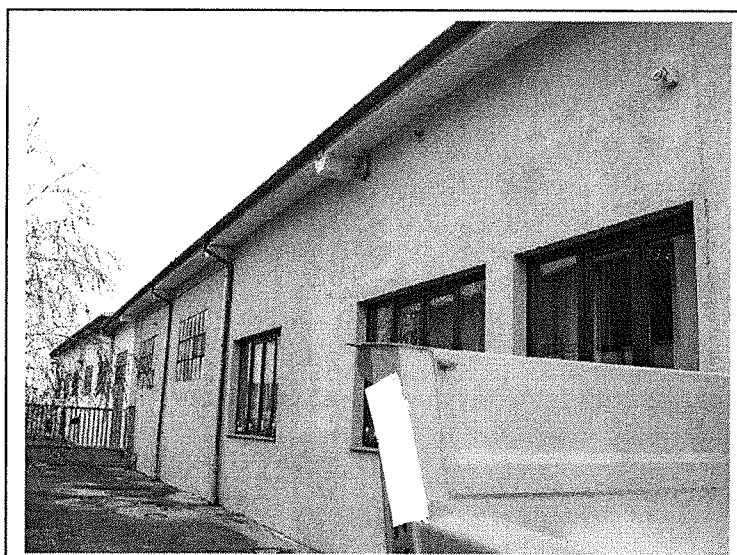
Area di stoccaggio degli allestimenti scarrabili prodotti.

CORPO A

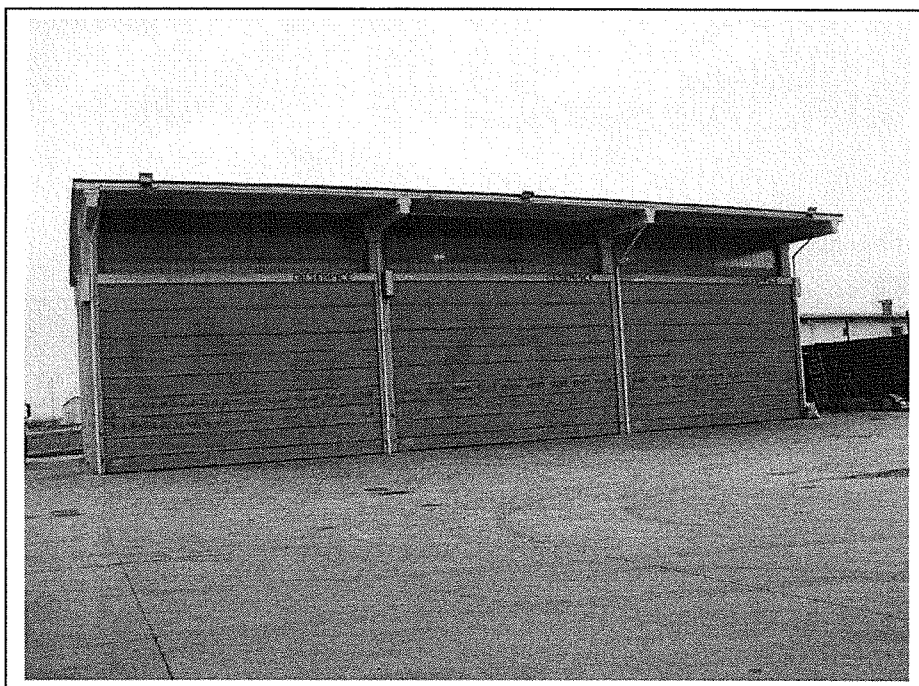


6

Fabbricato uffici e magazzino.



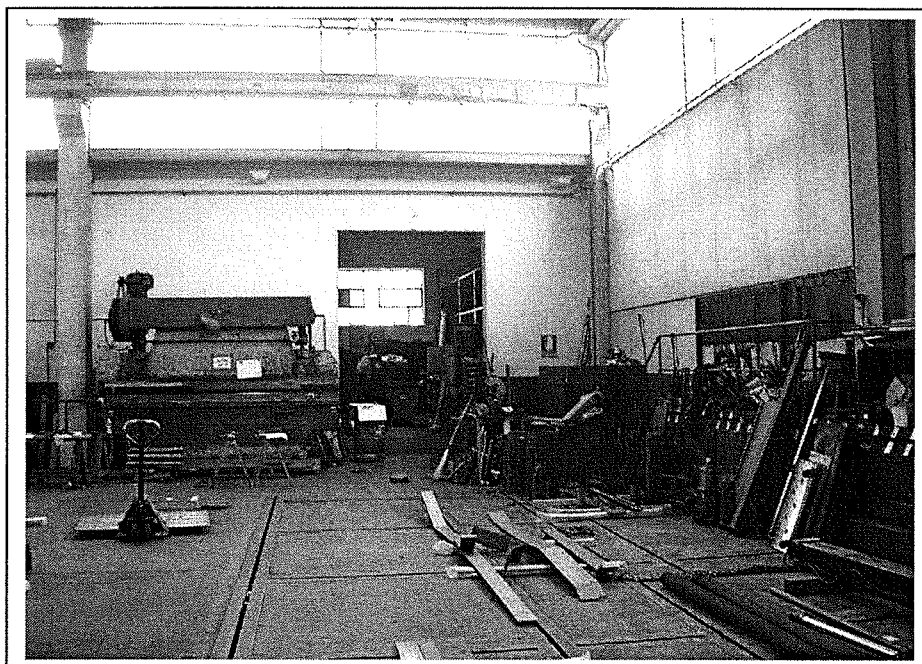
7



8

Capannone.

Interni corpo A



9

Capannone.



10

Capannone.

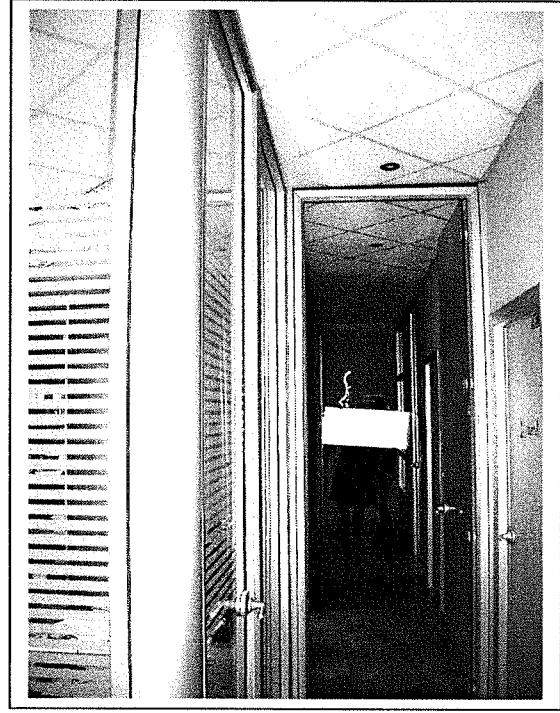


11

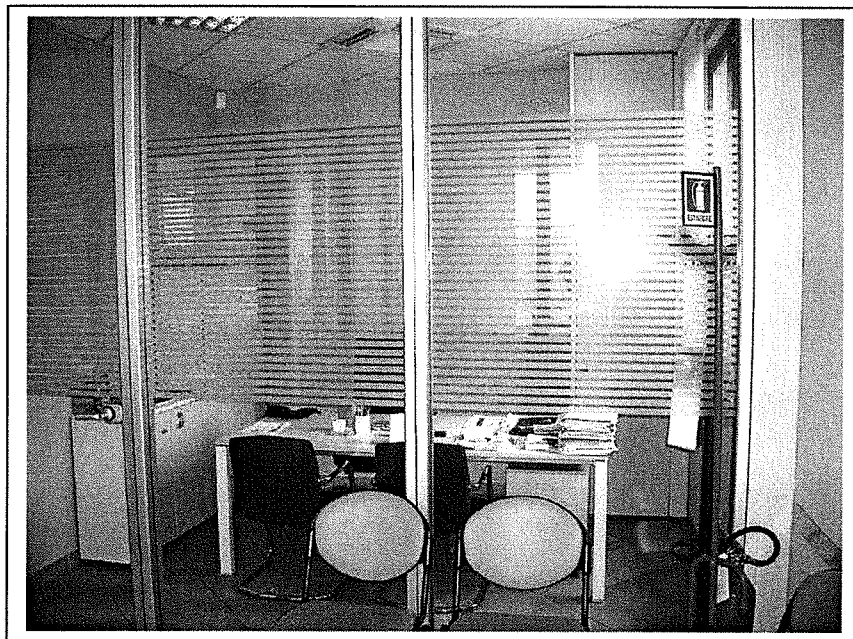
Uffici.



12



13



14

CORPO B



15

Palazzina uffici.

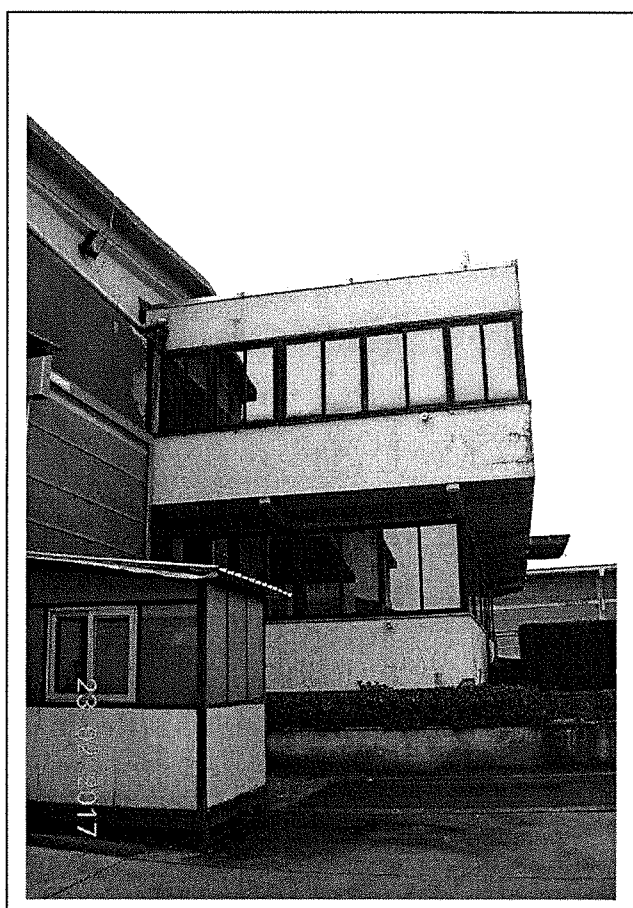


16

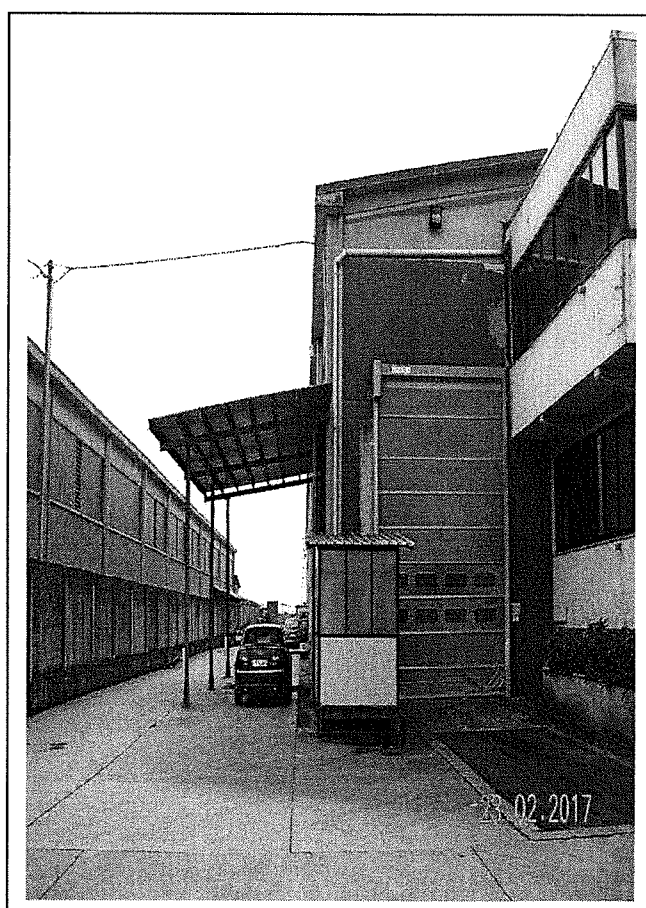


17

Capannone e tettoia di copertura della zona rulli per collaudo.



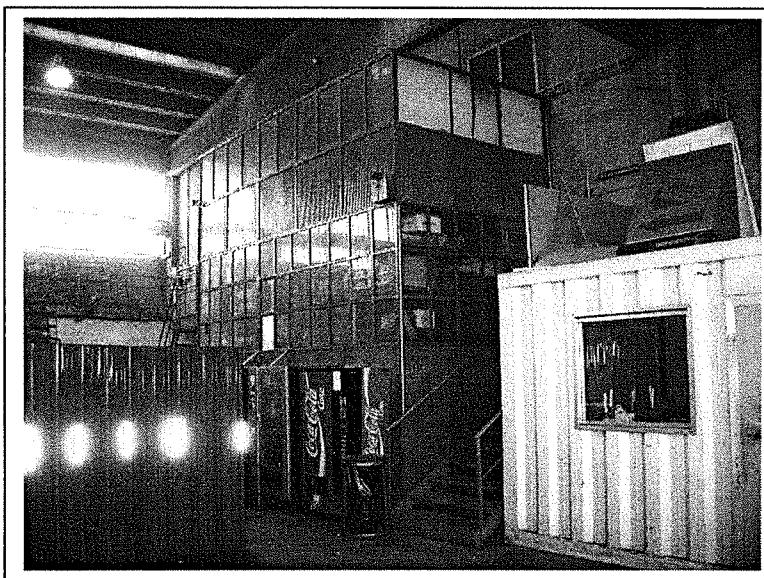
18



19

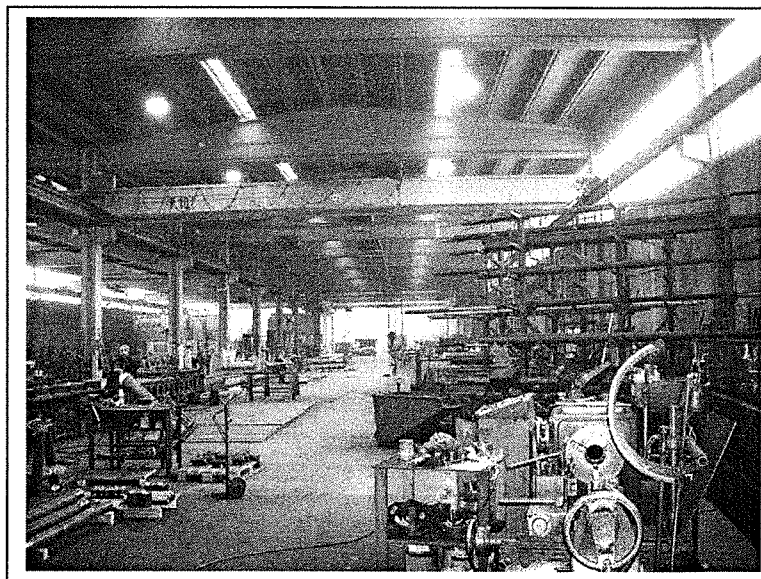
Capannone con adiacente palazzina uffici.

Interni corpo B

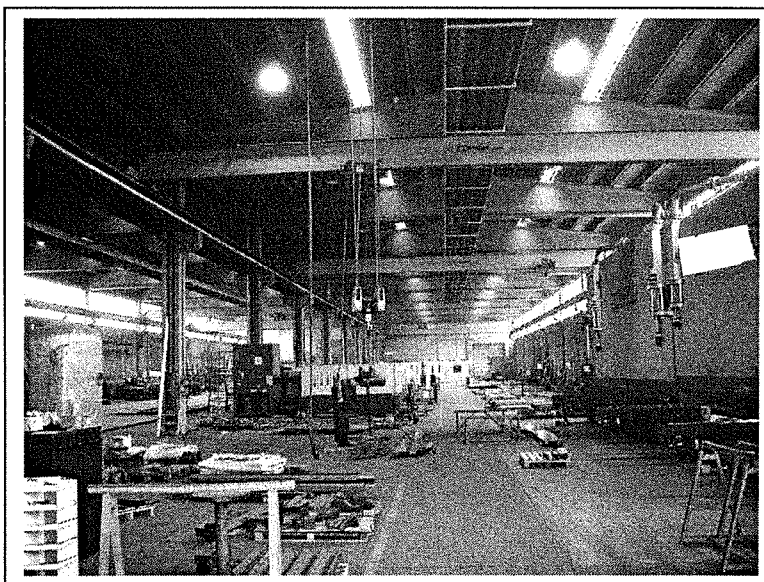


20

Capannone.



21

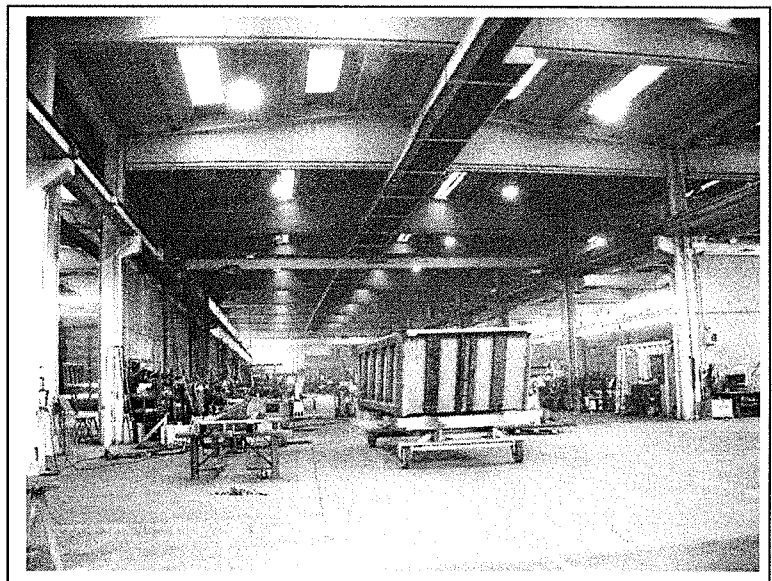


22

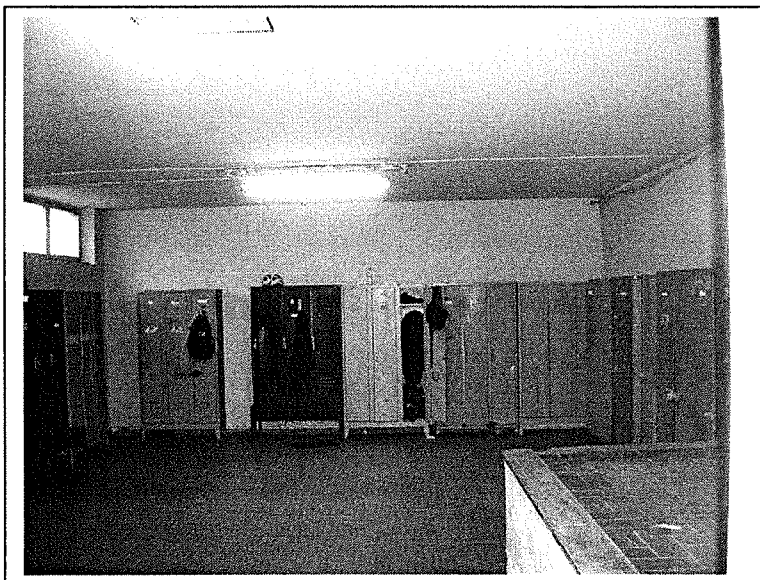


Capannone.

23



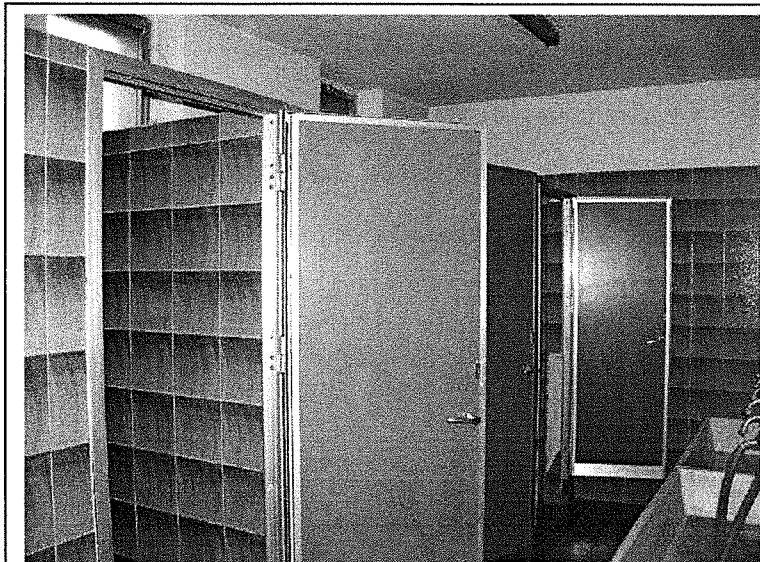
24



Palazzina Uffici

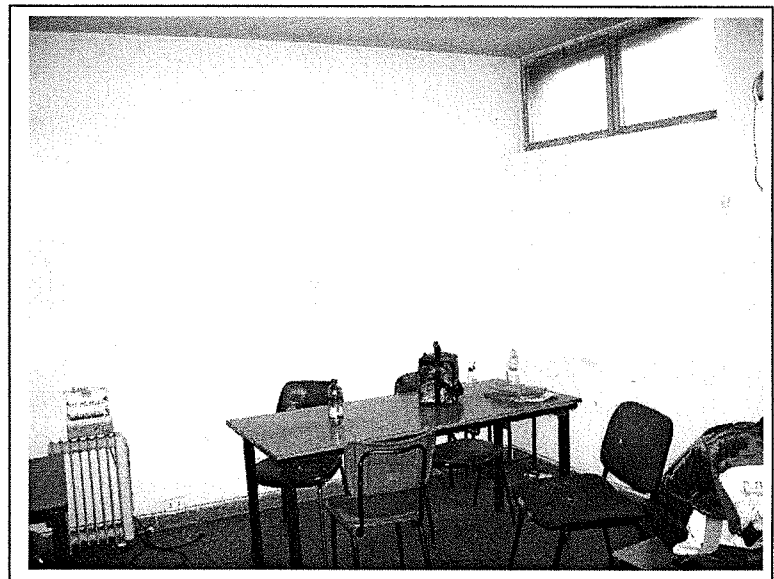
Piano interrato: spogliatoio.

25



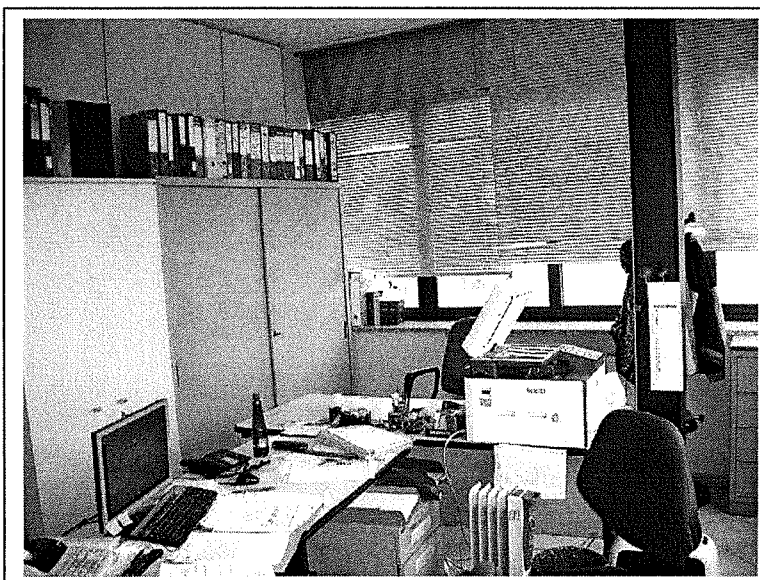
Locale docce.

26



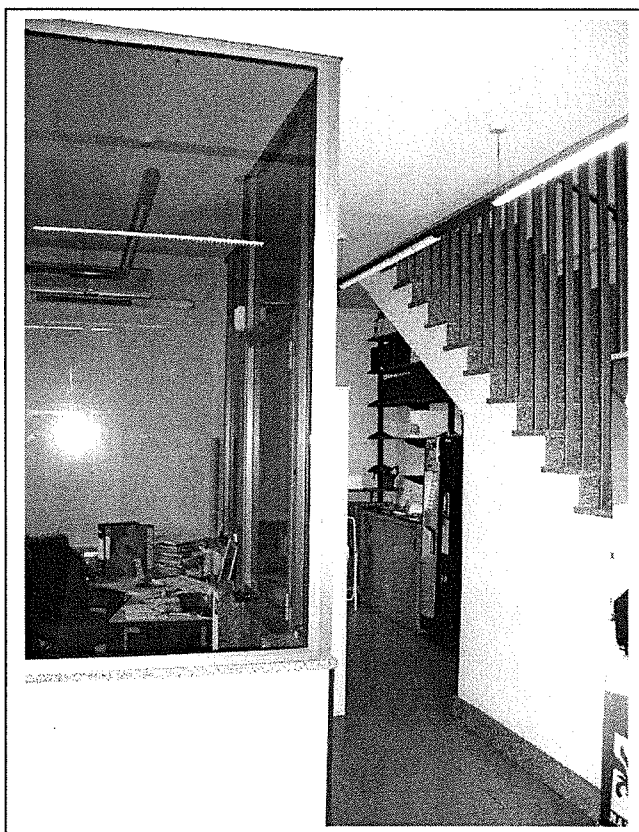
Locale mensa.

27

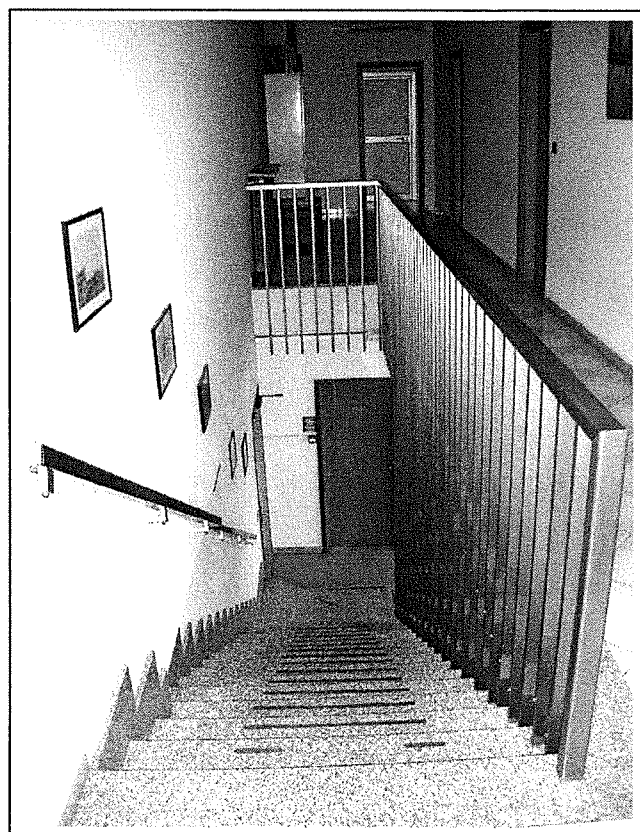


28

Piani fuori terra: uffici.



29

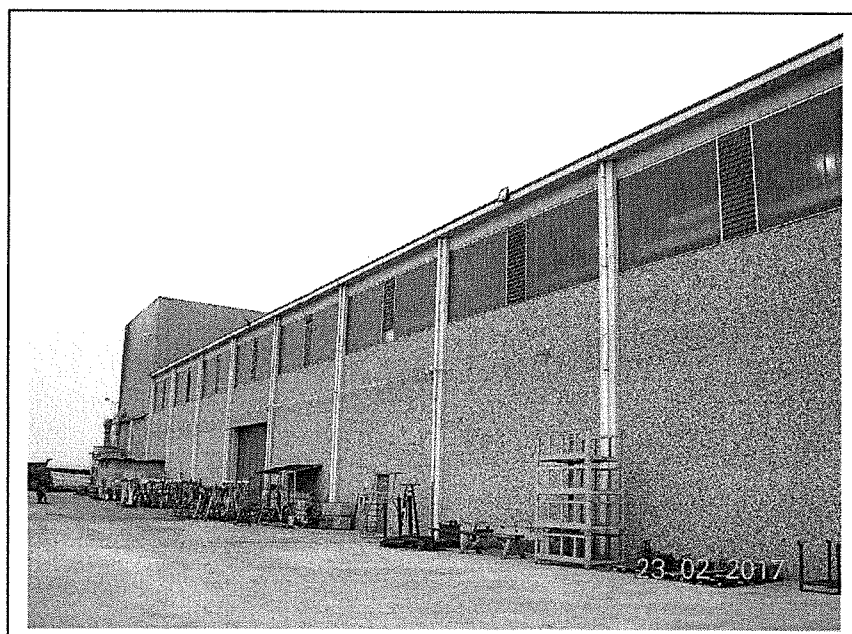


30



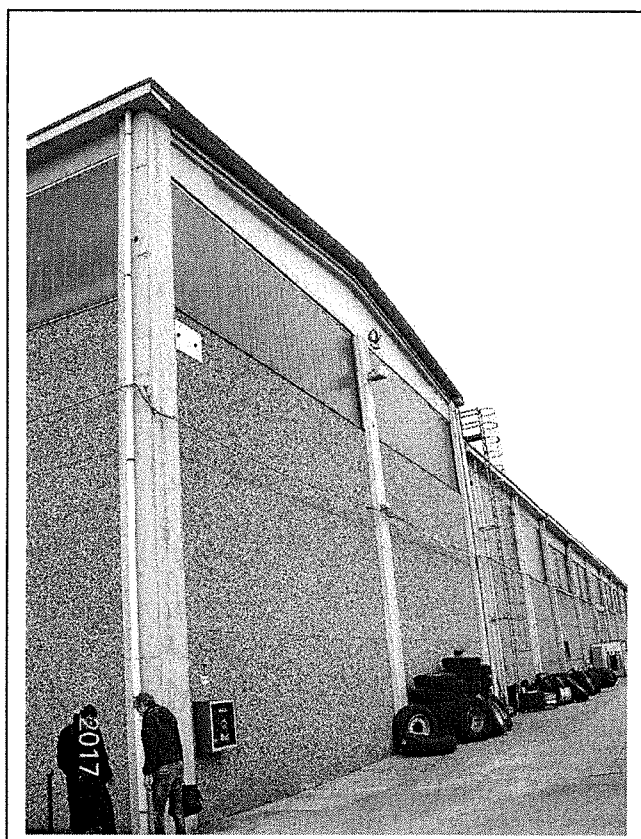
31

CORPO C

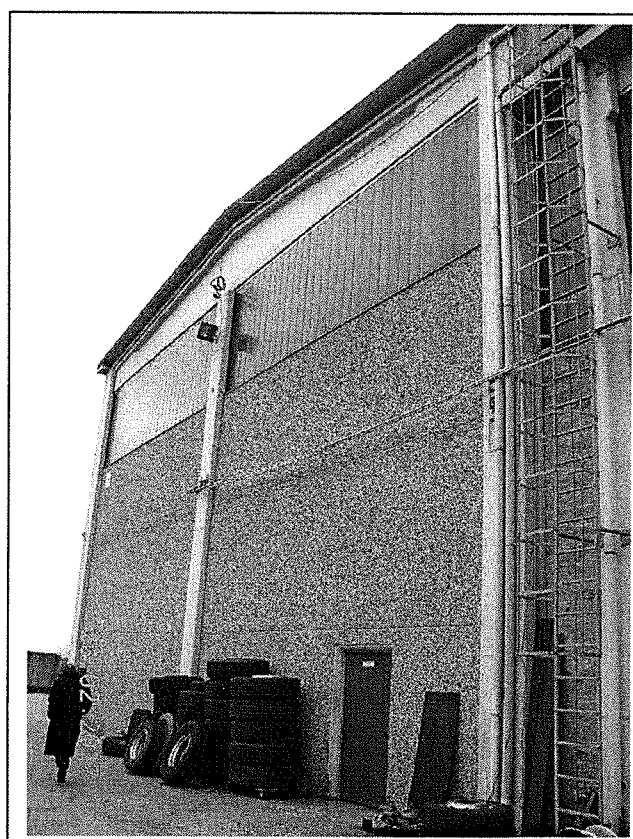


32

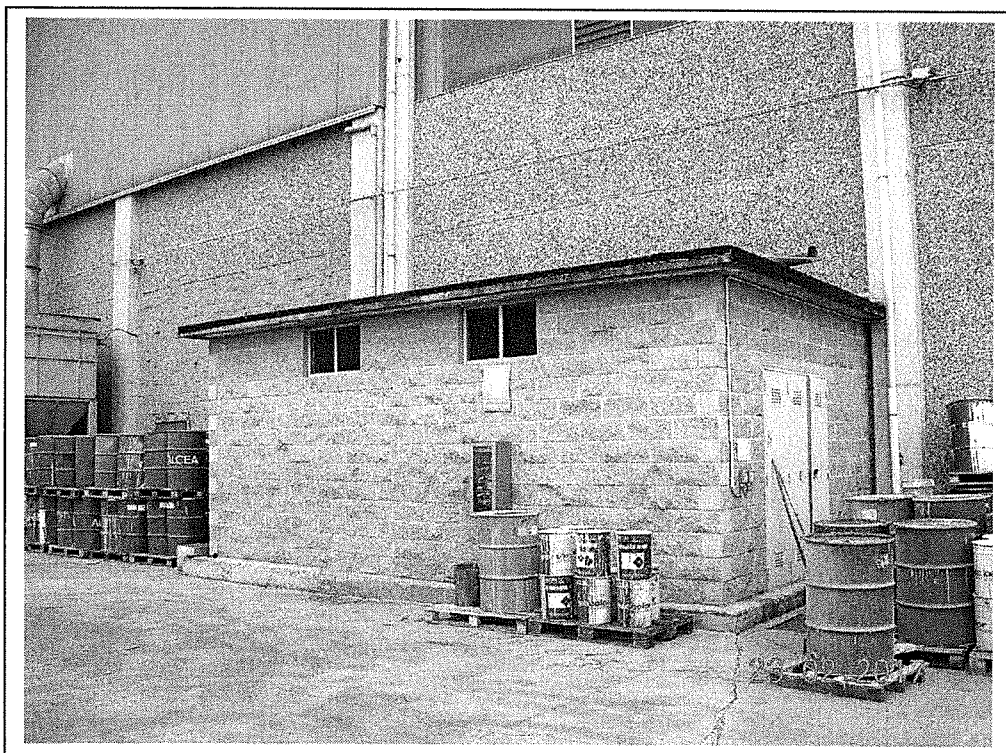
Capannone.



33

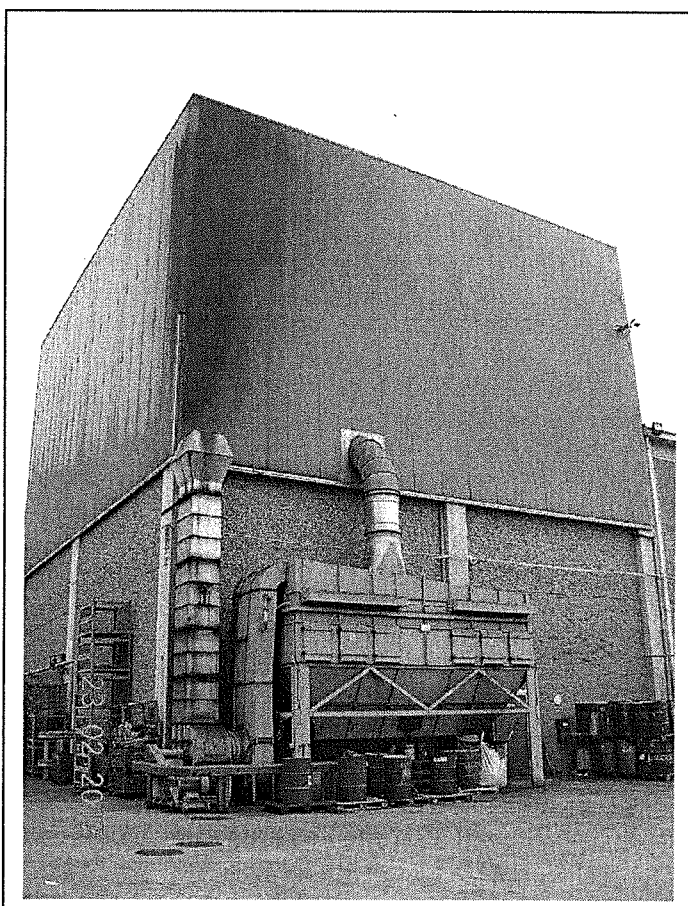


34



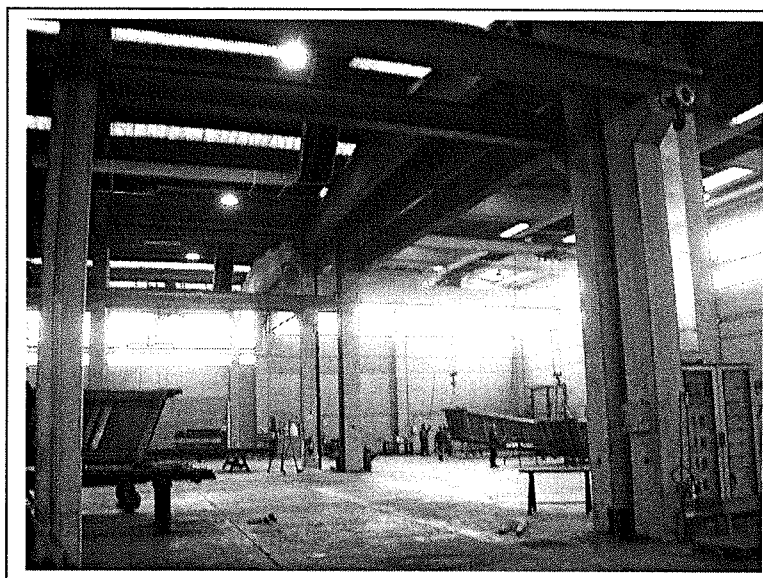
35

Cabina Enel.



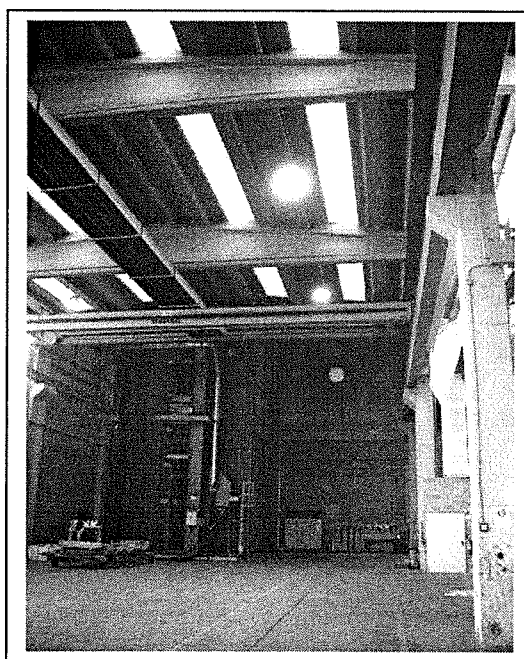
*Impianto di sabbiatura
a torre.*

36

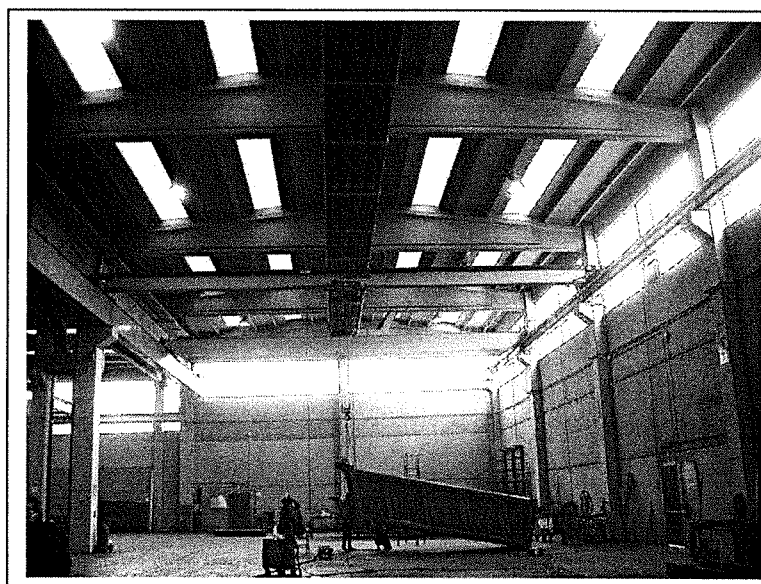


*Interni corpo C
Capannone.*

37

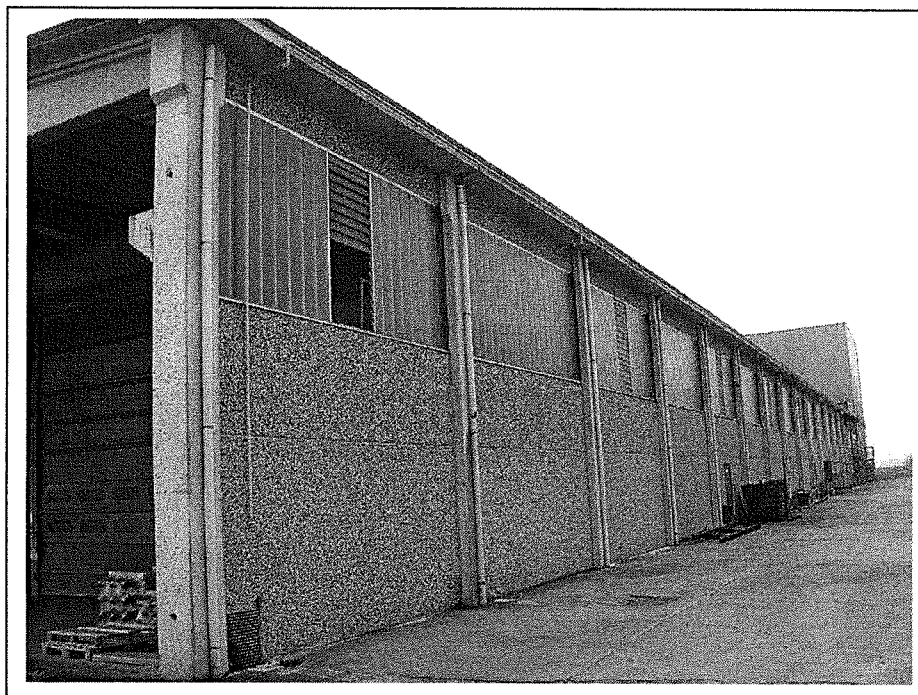


38



39

CORPO D



Capannone.

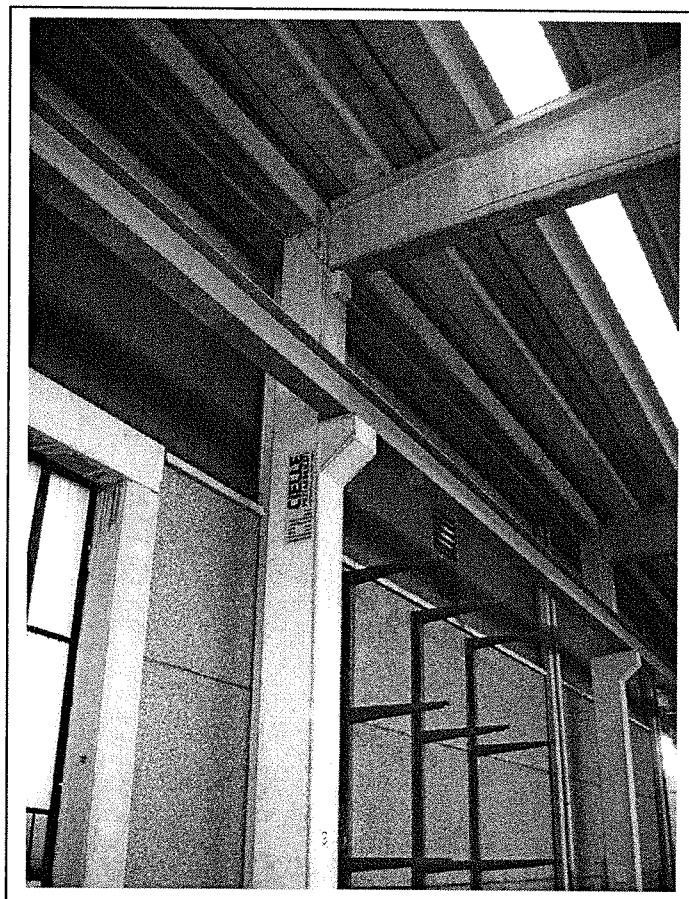
40

Interni corpo D

Capannone.

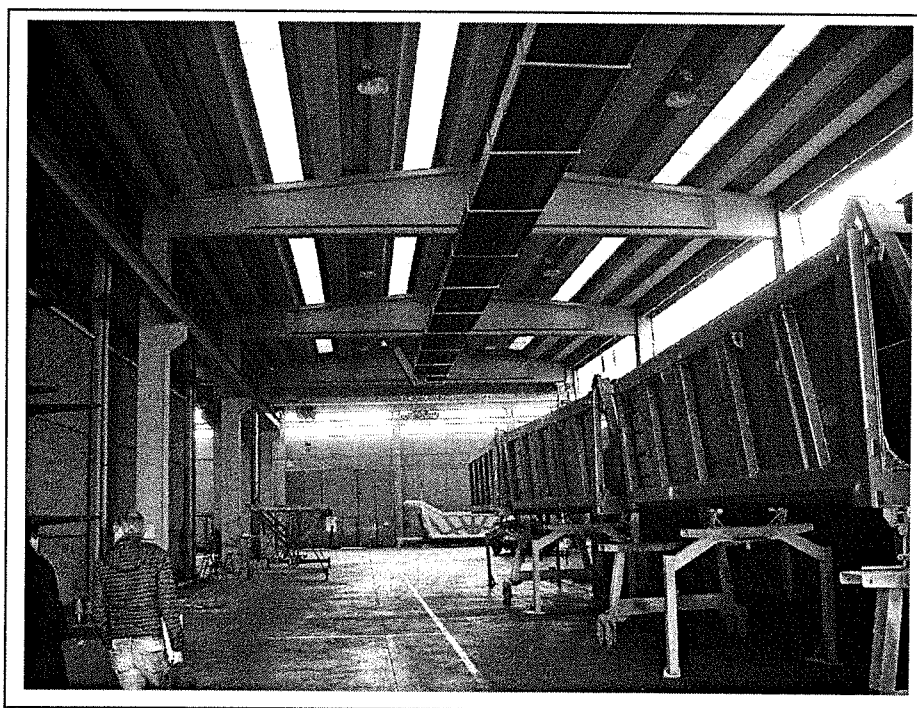


41



42

Particolare strutturale.



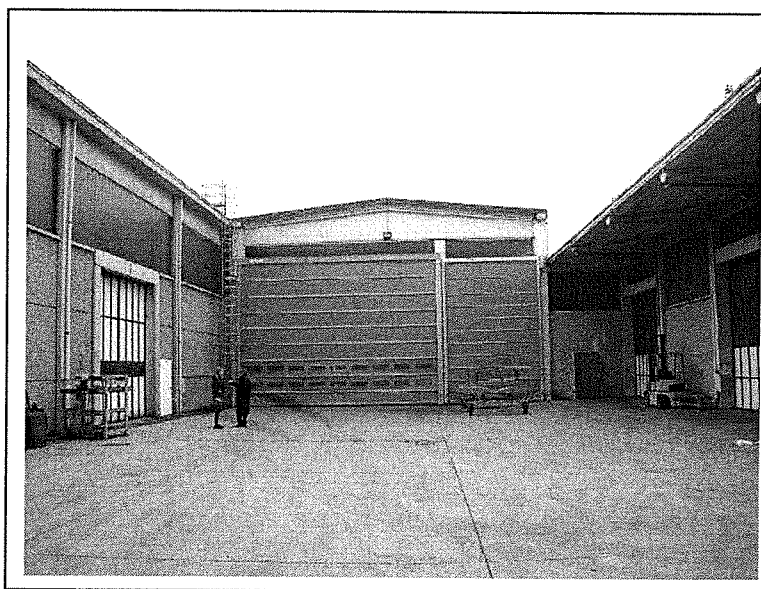
43

CORPO E

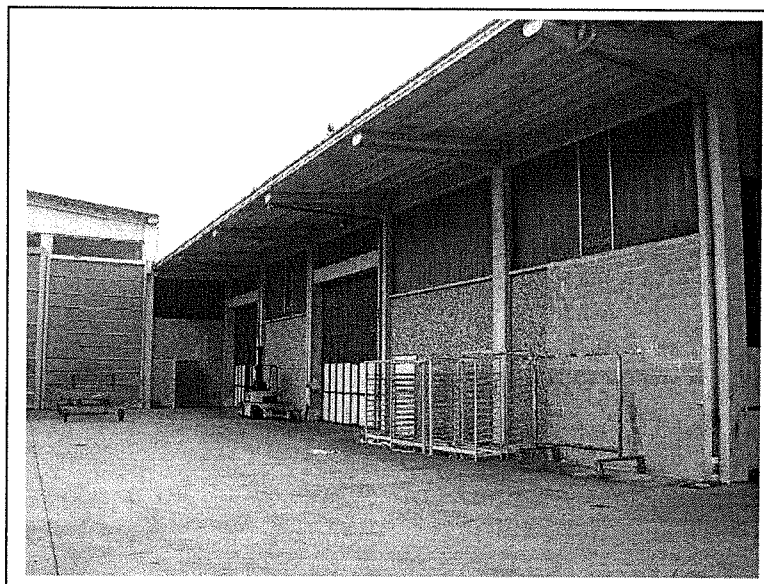


Capannone.

45



46

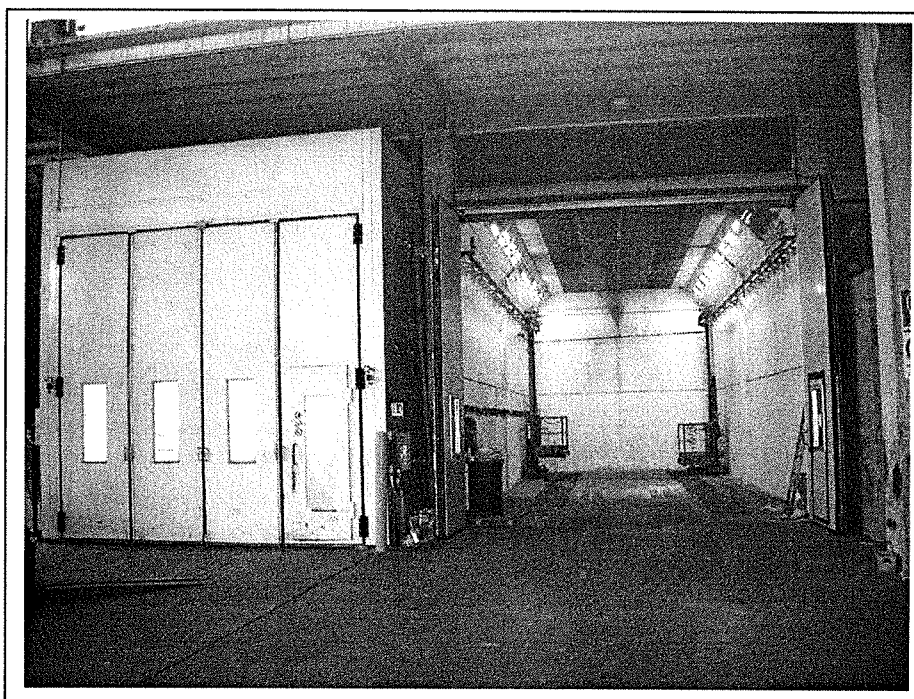




47

Campata aperta di testata.

Interni corpo E



48

Capannone: locali di verniciatura.