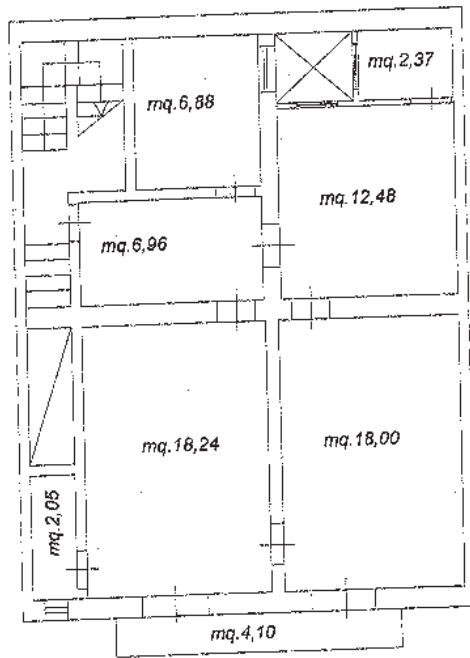


ALLEGATO 8

TAVOLA DI PROGETTO IMMOBILE

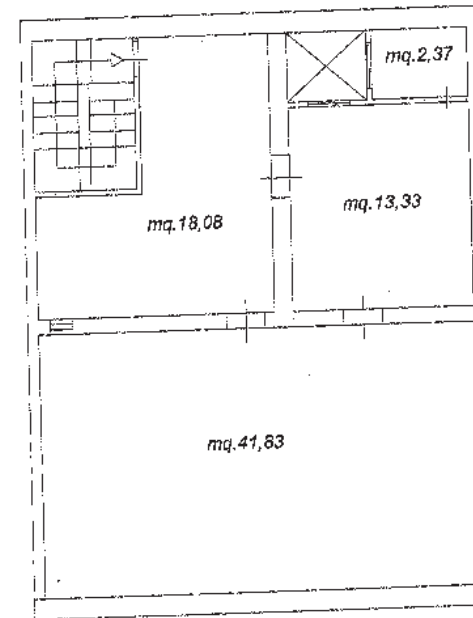


Pianta Piano Primo



via Paterno'

Pianta Secondo



Superficie utile mq. 100,76

Superficie balcone $4,10 \times 0,25 = \text{mq. } 1,025$

Superficie terrazzo $41,83 \times 0,30 = \text{mq. } 12,55$

Superficie commerciale $\text{mq. } 152,26 + \text{mq. } 1,025 + \text{mq. } 12,55 = \text{mq. } 165,83$