

Allegato E

Documentazione Fotografica



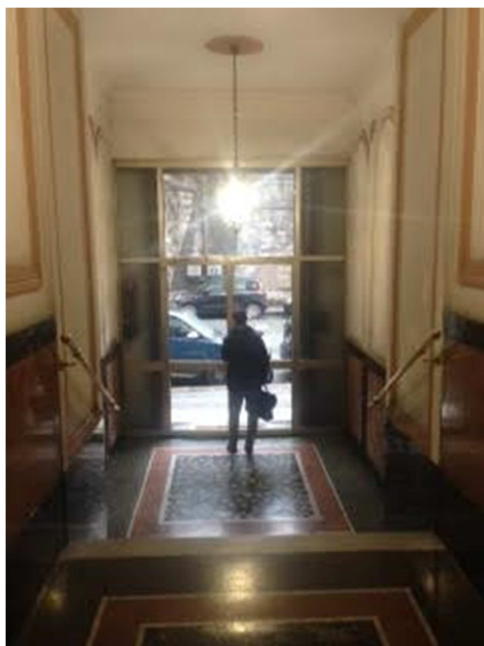


Prospetto principale



Portone di ingresso



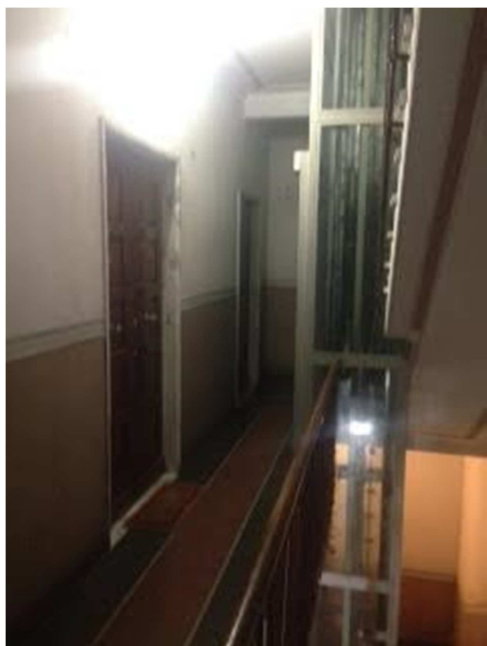


Atrio vano scala



Rampa scale condominiali





Ascensore



Porta Int. 4





Ingresso



Corridoio al bagno e camere





Stanza 1



Stanza 1



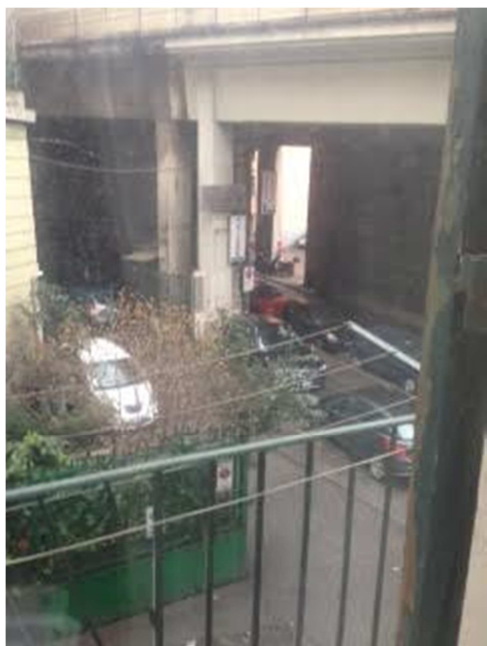


Stanza 2



Cucina





Poggiolino



Dispensa

