

ARCHITETTO EMANUELE CASSIBBA

Studio via Casmene n° 113 - Comiso (RG) - C.F.: CSS MNL 78A20 C927T

P.iva: 01415880887 - Tel.: 0932 1912155 - Cell.: 338 2451538

E-MAIL: architettocassibba@yahoo.it - PEC: emanuele.cassibba@archiworldpec.it

TAV. 01

- Nulla Osta per Opere Edili n° 530

UBICAZIONE:

Via F.lli n° , Foglio 279, Particella 7169, Subalterno 6-7,

TRIBUNALE DI RAGUSA

SEZIONE IMMOBILIARE CIVILE

**OGGETTO: CONSULENZA TECNICA D'UFFICIO ALLA CAUSA CIVILE
N. RUOLO G.E. 268/2016**

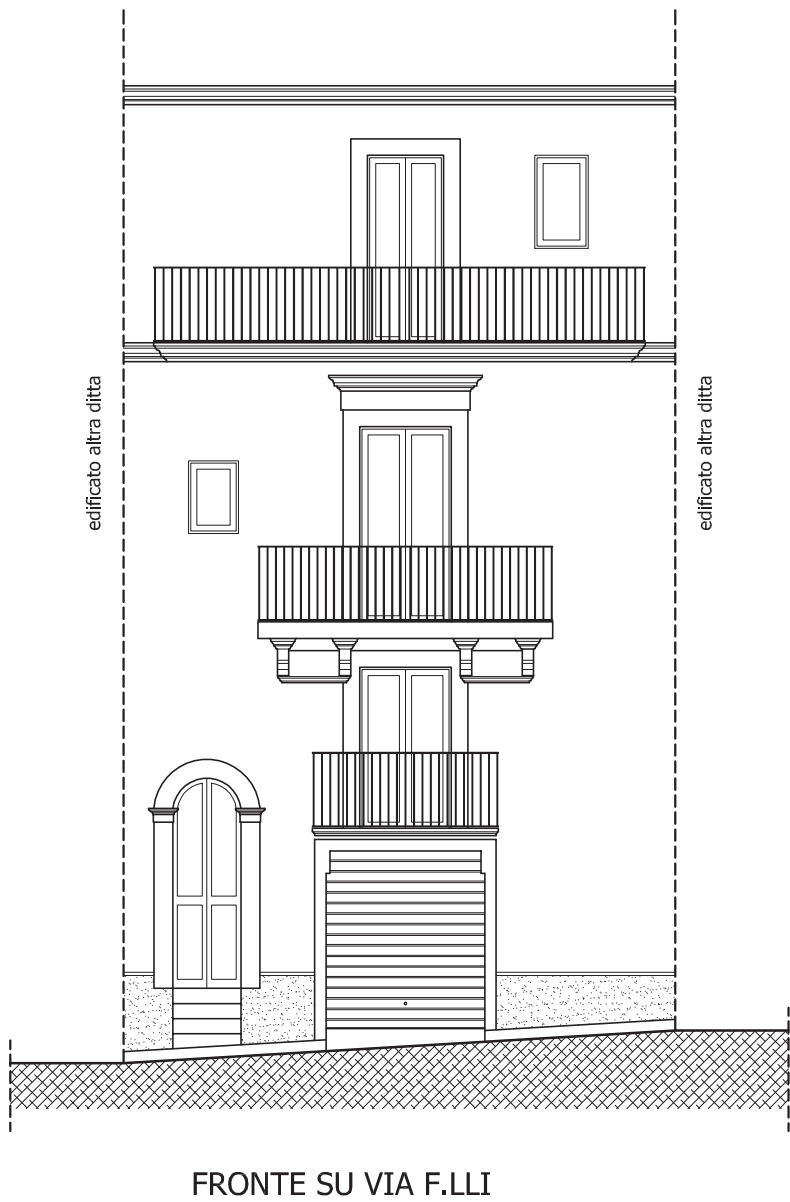
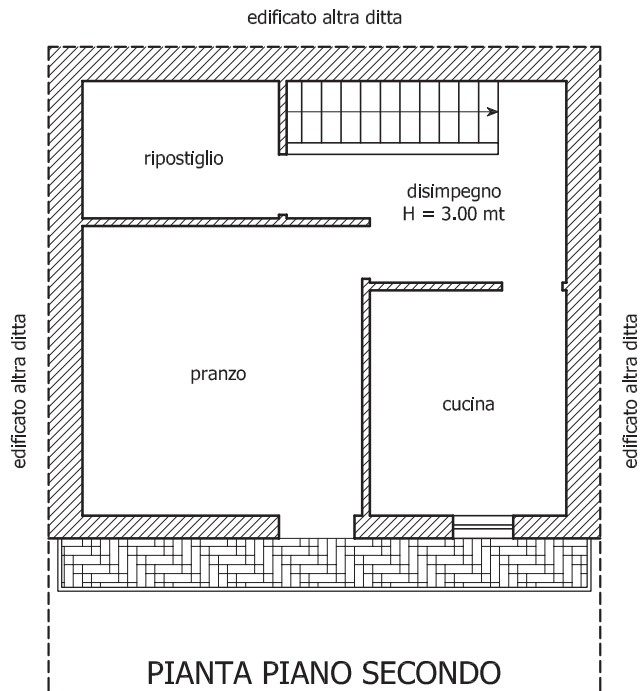
PROMOSSA DA:

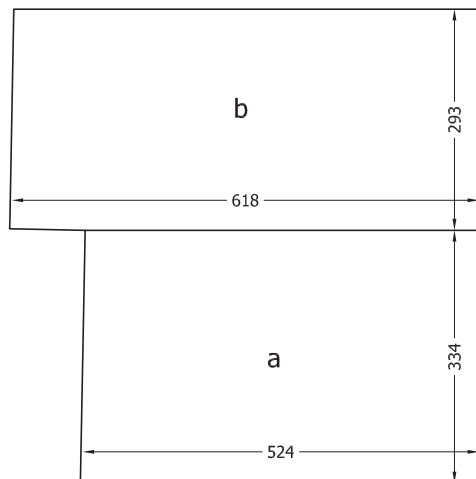
CONTRO:

GIUDICE: Dr. Fabrizio Cingolani

Comiso lì gennaio 2017

IL C.T.U.





Garage

COMPUTO PLANI-VOLUMETRICO (PT)

$$a - (5.24 \times 3.34) = \text{mq } 17.50$$

$$b - (6.18 \times 2.93) = \text{mq } 18.10$$

$$\text{Superficie coperta} = \text{mq } 35.60$$

$$\text{Volume di piano } V = (a + b) \times 2.67 = 95.05 \text{ mc}$$

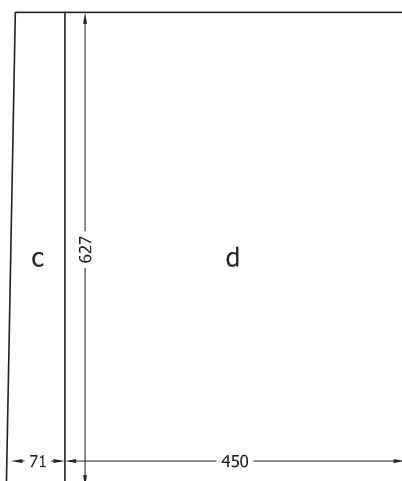
COMPUTO PLANI-VOLUMETRICO (P1)

$$c - (0.71 \times 6.27) = \text{mq } 4.45$$

$$d - (4.50 \times 6.27) = \text{mq } 28.22$$

$$\text{Superficie coperta} = \text{mq } 32.67$$

$$\text{Volume di piano } V = (c + d) \times 2.67 = 87.23 \text{ mc}$$



Piano Primo

COMPUTO PLANI-VOLUMETRICO (P2)

$$e - (5.23 \times 3.15) = \text{mq } 16.47$$

$$f - (6.54 \times 3.12) = \text{mq } 20.40$$

$$\text{Superficie coperta} = \text{mq } 36.87$$

$$\text{Volume di piano } V = (e + f) \times 3.70 = 136.42 \text{ mc}$$

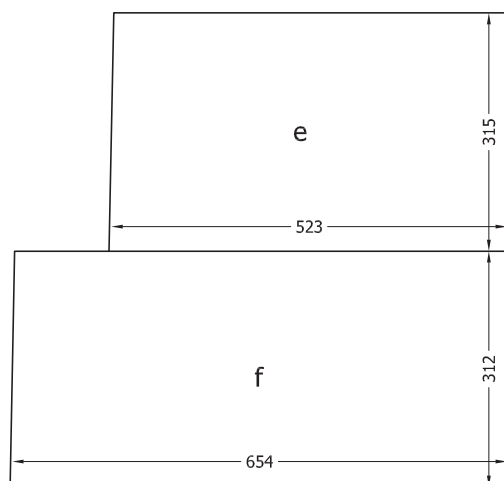
COMPUTO PLANI-VOLUMETRICO (P3)

$$g - (6.73 \times 6.28) = \text{mq } 42.26$$

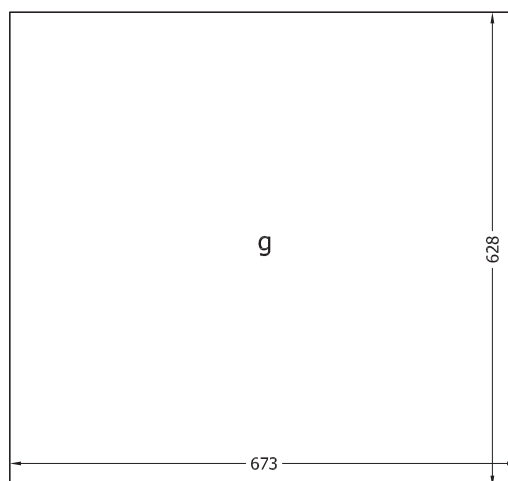
$$\text{Superficie coperta} = \text{mq } 42.26$$

$$\text{Volume di piano } V = (g) \times 3.12 = 131.85 \text{ mc}$$

$$\text{VOLUME TOTALE PT-P1-P2-P3 F.T.} = \text{mc } 450.55$$



Piano Secondo



Piano Terzo

ARCHITETTO EMANUELE CASSIBBA

Studio via Casmene n° 113 - Comiso (RG) - C.F.: CSS MNL 78A20 C927T

P.iva: 01415880887 - Tel.: 0932 1912155 - Cell.: 338 2451538

E-MAIL: architettocassibba@yahoo.it - PEC: emanuele.cassibba@archiworldpec.it

TAV. 02

- **Stato di Fatto**

UBICAZIONE:

Via F.Ili n° , Foglio 279, Particella 7169, Subalterno 6-7,

TRIBUNALE DI RAGUSA

SEZIONE IMMOBILIARE CIVILE

**OGGETTO: CONSULENZA TECNICA D'UFFICIO ALLA CAUSA CIVILE
N. RUOLO G.E. 268/2016**

PROMOSSA DA:

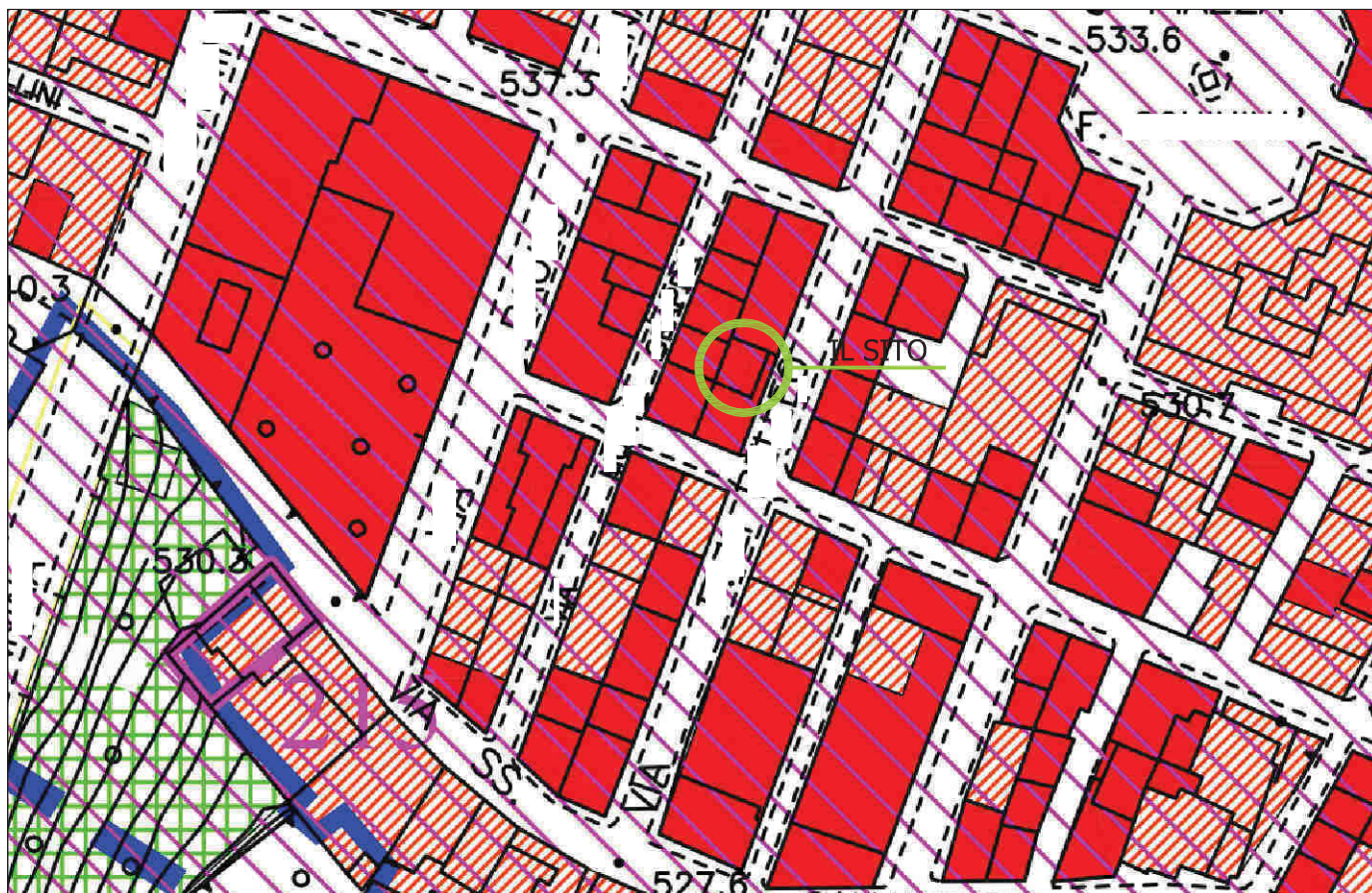
CONTRO:

GIUDICE: Dr. Fabrizio Cingolani

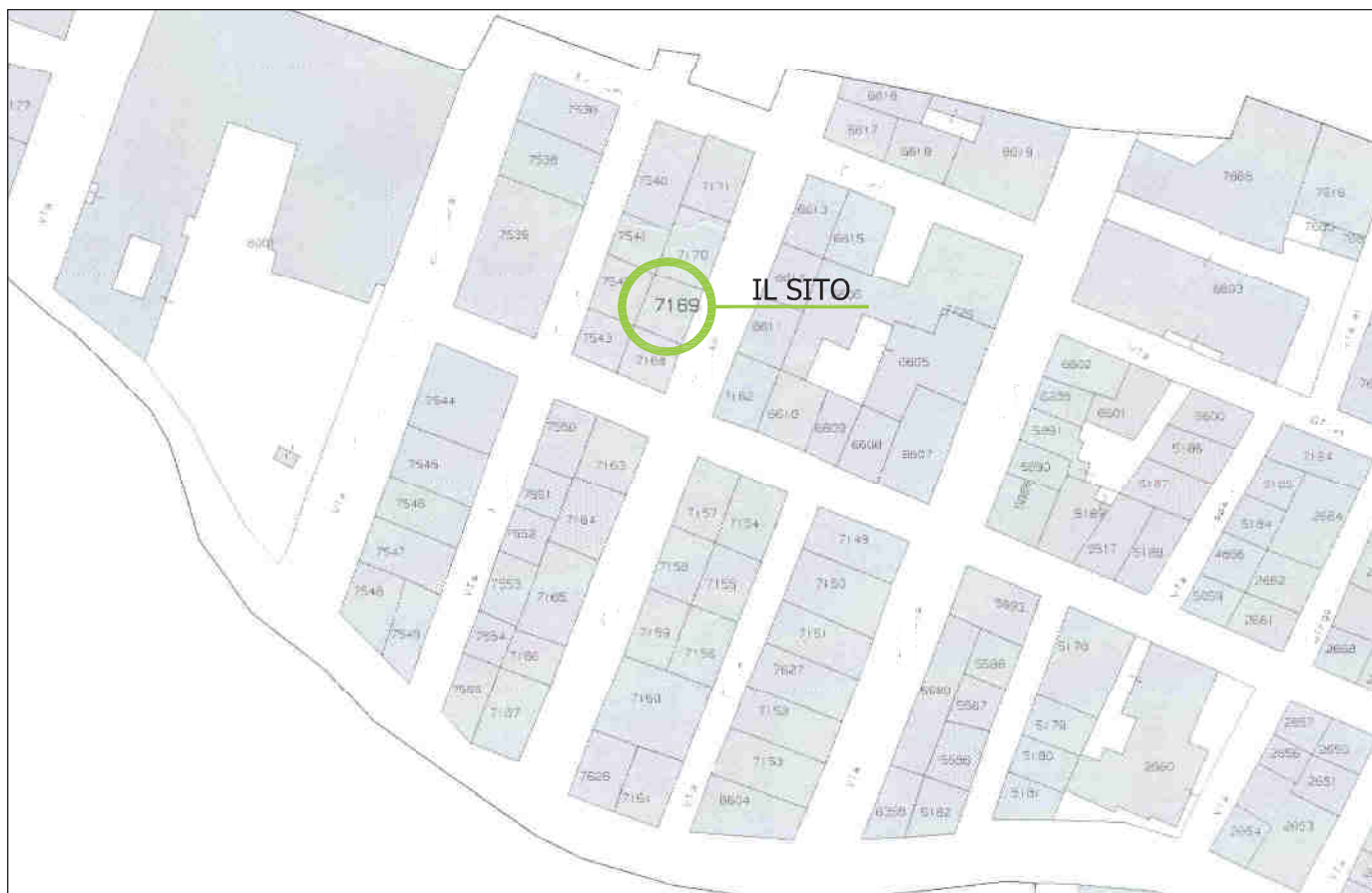
Comiso lì gennaio 2017

IL C.T.U.

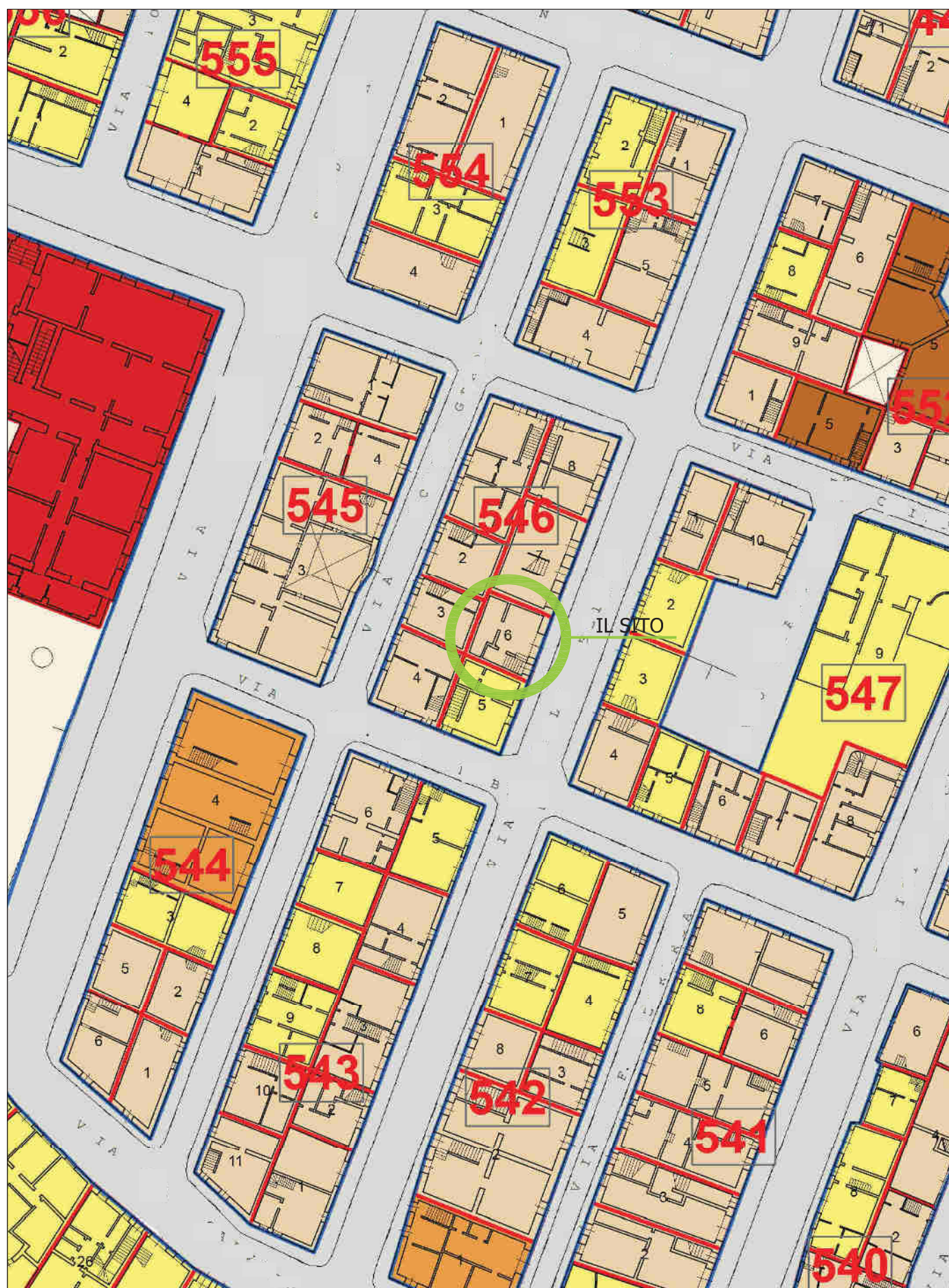
STRALCIO DAL P.R.G. - Rapp. 1:1000



STRALCIO ESTR. MAPPA - Rapp. 1:1000



STRALCIO DAL P.P.E - Rapp. 1:500








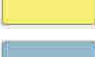
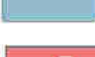
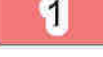

Legenda

-  Fontana e vasca esistente
-  Fontana e vasca eliminata
-  Latomie
-  Mezzo Ettometrico
-  Ascensore esistente
-  Sottopasso esistente
-  Settore 8 - Fonti

Interventi in progetto

-  Sottopasso in progetto
-  Ascensore
-  Stazione mezzo ettometrico
-  Parcheggio a raso
-  Isolato
-  Unità edilizia

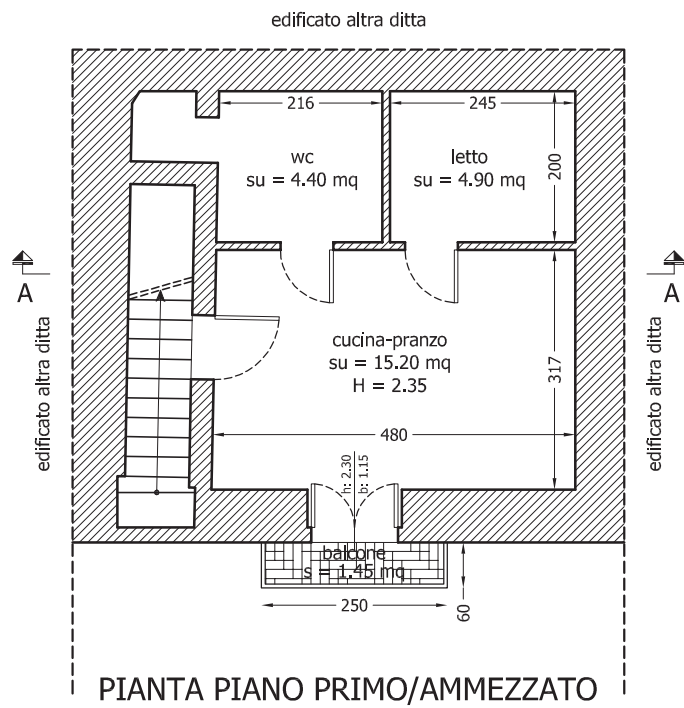
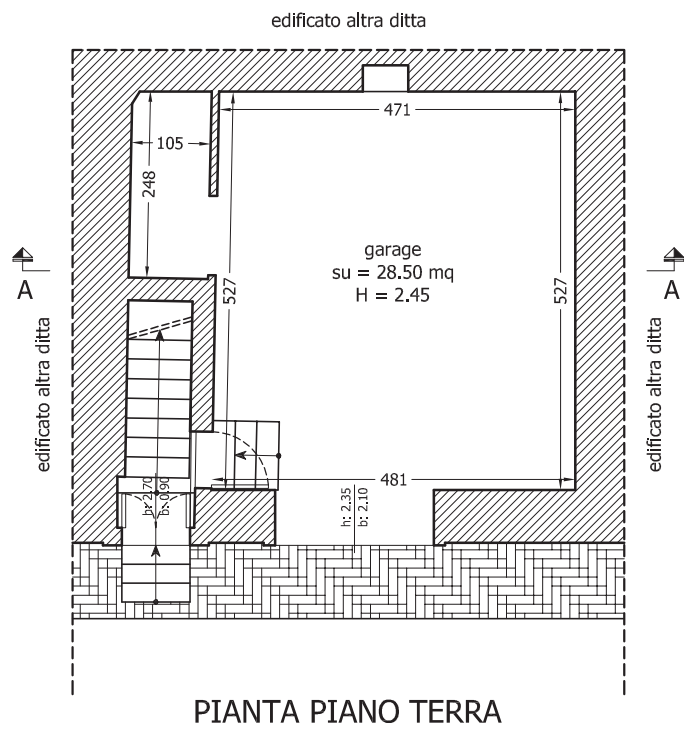
Tipologia edilizia

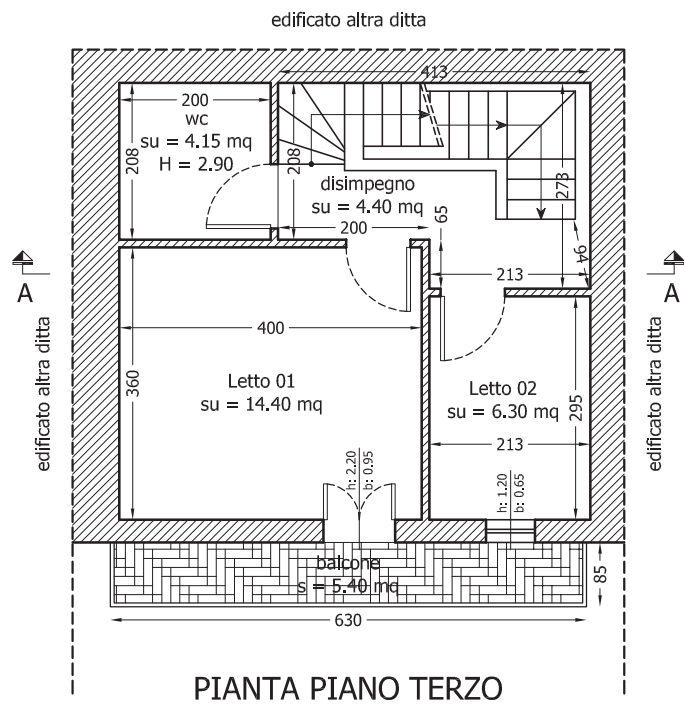
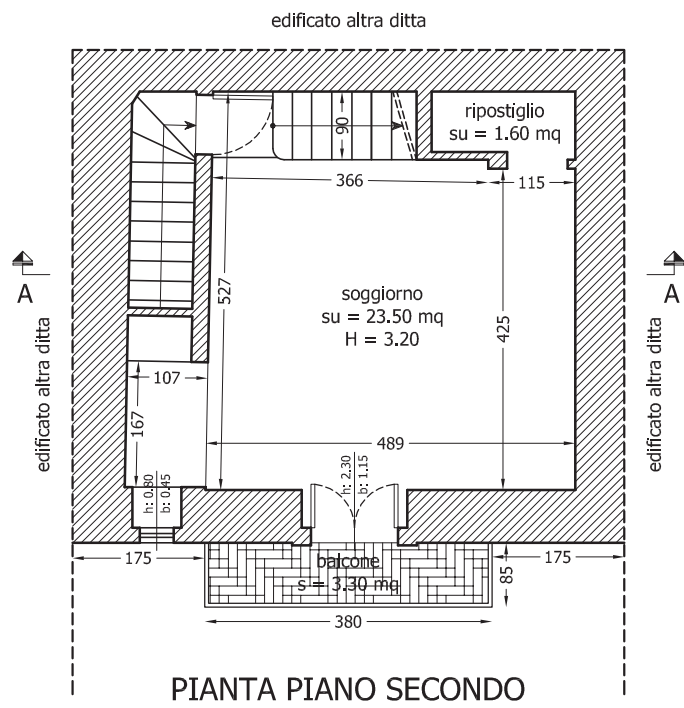
-  T1 Edilizia di base
-  T2 Palazzetto
-  T3 Palazzo
-  T4 Edilizia specialistica religiosa monumentale
-  T5 Edilizia specialistica civile monumentale
-  T6 Edilizia residenziale moderna
-  T7 Edilizia specialistica moderna
-  1 Numero scheda intervento specifico
-  1.i1 Numero emendamento su intervento specifico

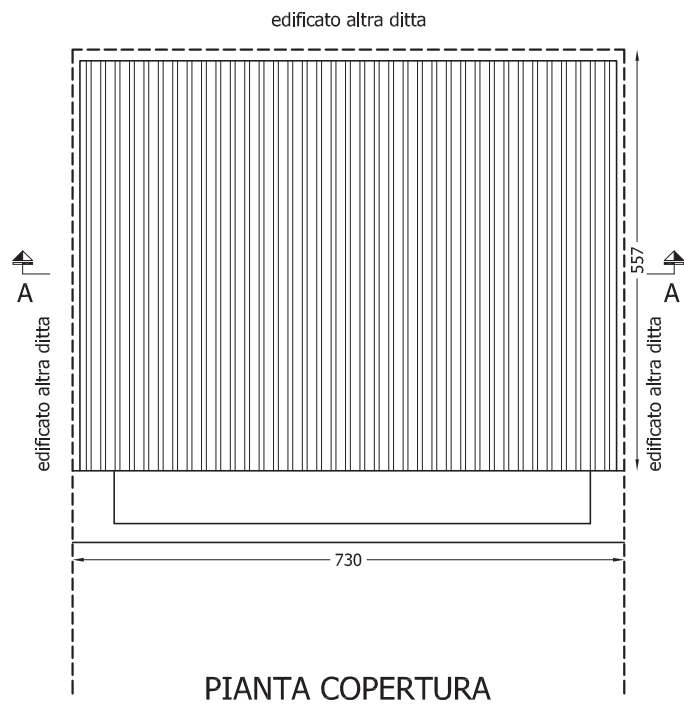
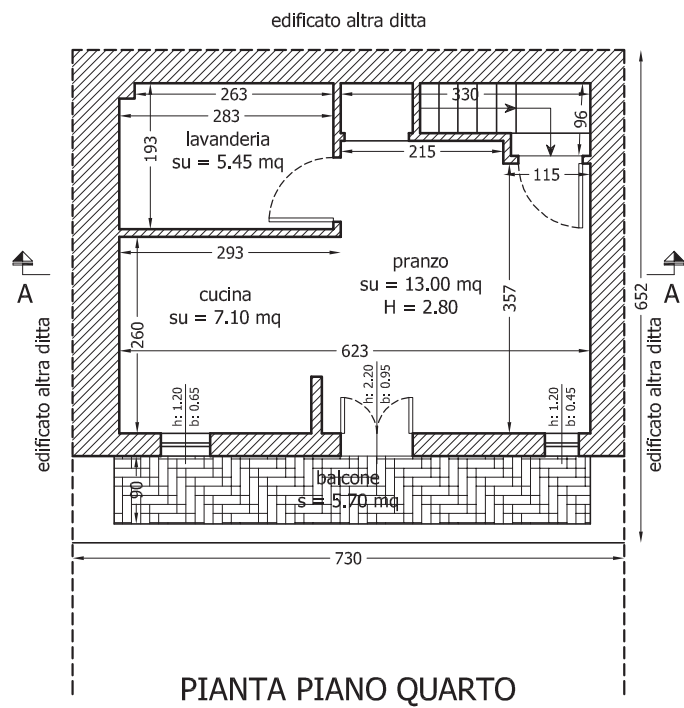
TIPOAREA

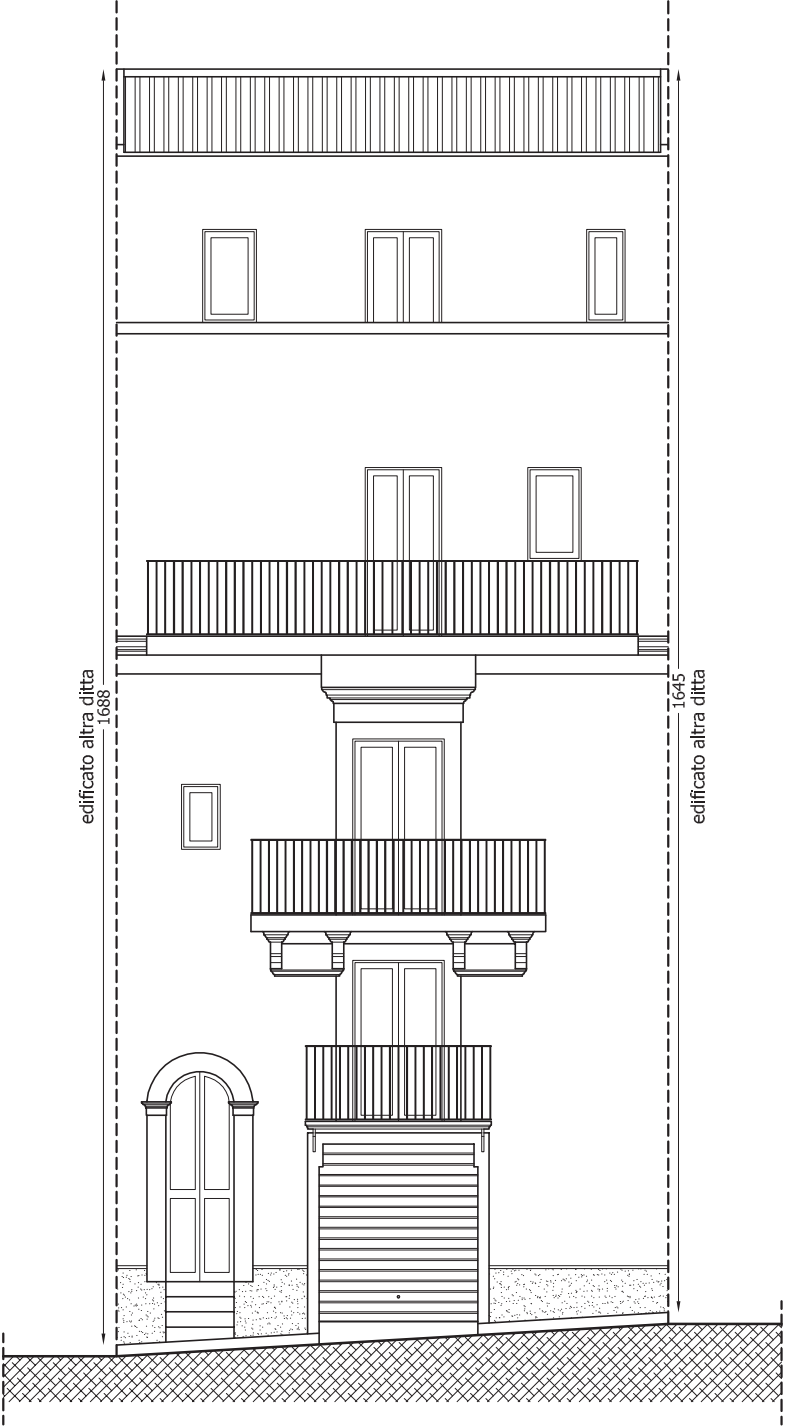
-  Area archeologica
-  Spazio scoperto privato
-  Spazio scoperto pubblico
-  Parcheggio
-  Scalo merci
-  Verde privato
-  Verde pubblico
-  Attrezzatura sportiva

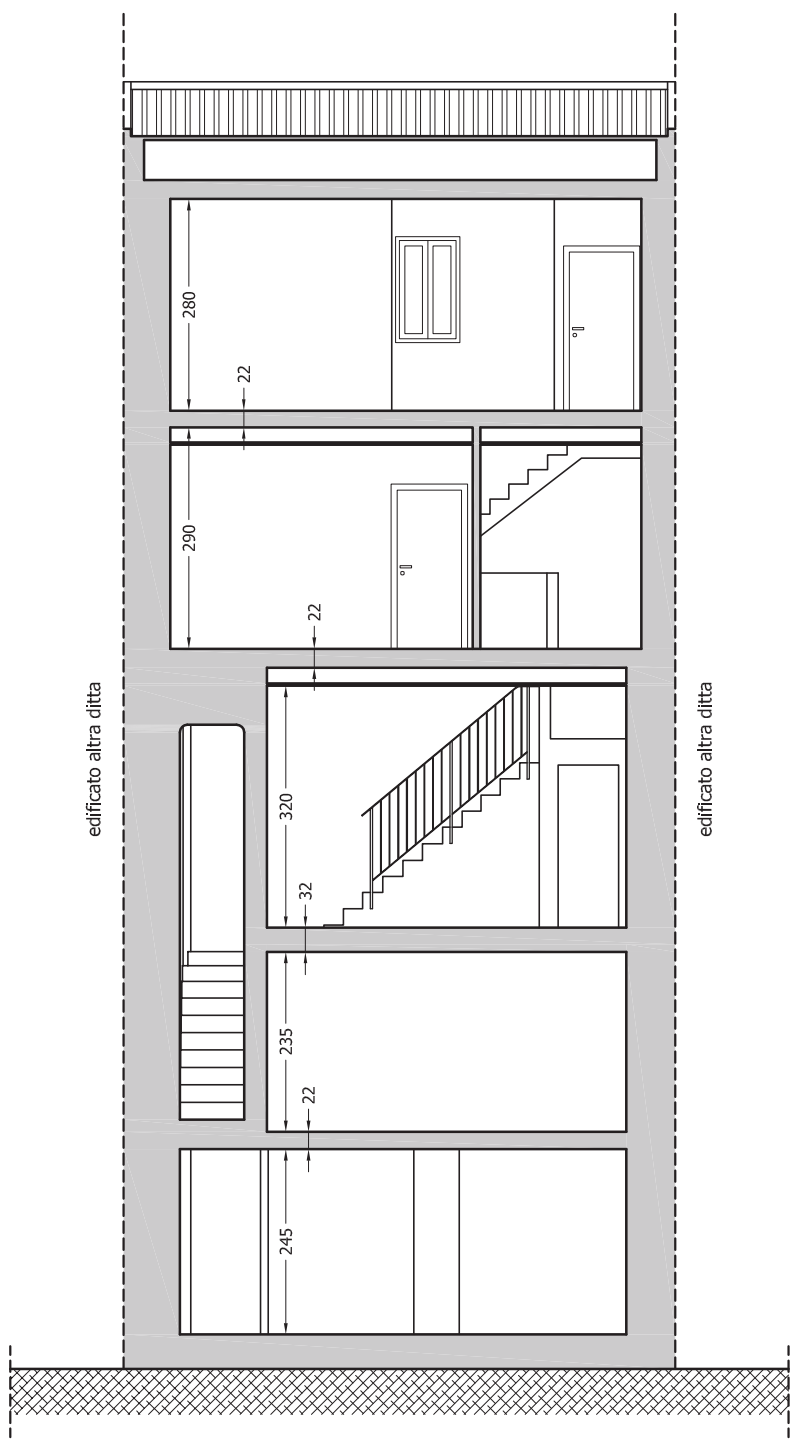
INTERVENTI AMMESSI			INTERVENTI NON AMMESSI							
		ZONA A							ZONA	
		TIPOLOGIA								
		T1	T2	T3	T4	T5	T6	T7		







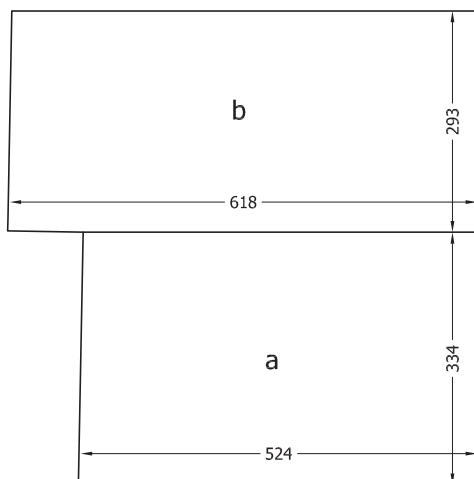




SEZIONE A-A

VERIFICA DELLE SUPERFICI FINESTRATE

Piano	Vano	Superficie Utile	Superficie Fin.	Superficie Utile/8
Primo Secondo Terzo Quarto	cucina-pranzo P1	15.20 mq	2.65 mq \geq	1.90 mq
	soggiorno	23.50 mq	3.00 mq \geq	2.94 mq
	letto 01	14.40 mq	2.10 mq \geq	1.80 mq
	letto 02	6.30 mq	0.78 mq \geq	0.78 mq
	cucina-pranzo P4	20.10 mq	3.41 mq \geq	2.51 mq



Garage

COMPUTO PLANI-VOLUMETRICO (PT)

$$a - (5.24 \times 3.34) = \text{mq } 17.50$$

$$b - (6.18 \times 2.93) = \text{mq } 18.10$$

$$\text{Superficie coperta} = \text{mq } 35.60$$

$$\text{Volume di piano } V = (a + b) \times 2.67 = 95.05 \text{ mc}$$

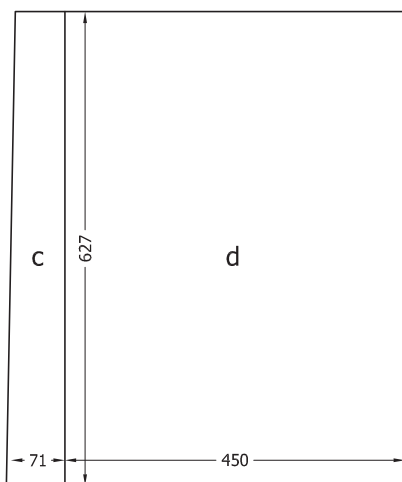
COMPUTO PLANI-VOLUMETRICO (P1)

$$c - (0.71 \times 6.27) = \text{mq } 4.45$$

$$d - (4.50 \times 6.27) = \text{mq } 28.22$$

$$\text{Superficie coperta} = \text{mq } 32.67$$

$$\text{Volume di piano } V = (c + d) \times 2.67 = 87.23 \text{ mc}$$



Piano Primo

COMPUTO PLANI-VOLUMETRICO (P2)

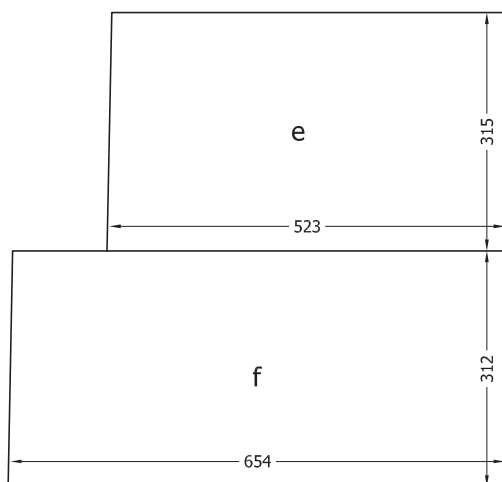
$$e - (5.23 \times 3.15) = \text{mq } 16.47$$

$$f - (6.54 \times 3.12) = \text{mq } 20.40$$

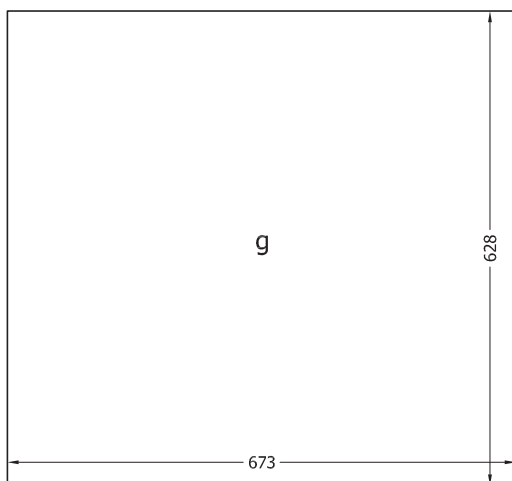
$$\text{Superficie coperta} = \text{mq } 36.87$$

$$\text{Volume di piano } V = (e + f) \times 3.70 = 136.42 \text{ mc}$$

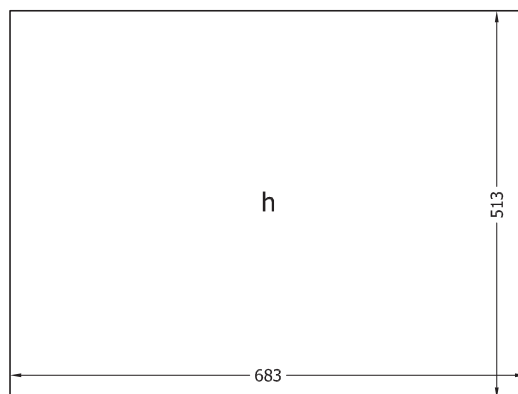
$$\text{VOLUME PT-P1-P2 F.T.} = \text{mc } 318.70$$



Piano Secondo



Piano Terzo



Piano Terzo

COMPUTO PLANI-VOLUMETRICO (P3)

$$g - (6.73 \times 6.28) = \text{mq } 42.26$$

$$\text{Superficie coperta} = \text{mq } 42.26$$

$$\text{Volume di piano } V = (g) \times 3.12 = 131.85 \text{ mc}$$

COMPUTO PLANI-VOLUMETRICO (P4)

$$h - (6.83 \times 5.13) = \text{mq } 35.04$$

$$\text{Superficie coperta} = \text{mq } 36.87$$

$$\text{Volume di piano } V = (h) \times 3.05 = 112.45 \text{ mc}$$

$$\text{VOLUME P4-P3 F.T.} = \text{mc } 244.30$$

$$\text{VOLUME TOTALE PT-P1-P2-P3-P4 F.T.} = \text{mc } 563.00$$

ARCHITETTO EMANUELE CASSIBBA

Studio via Casmene n° 113 - Comiso (RG) - C.F.: CSS MNL 78A20 C927T

P.iva: 01415880887 - Tel.: 0932 1912155 - Cell.: 338 2451538

E-MAIL: architettocassibba@yahoo.it - PEC: emanuele.cassibba@archiworldpec.it

TAV. 03

- Corredo Fotografico

UBICAZIONE:

Via F.lli Belleo n° 191-193, Foglio 279, Particella 7169, Subalterno 6-7, Ragusa

TRIBUNALE DI RAGUSA

SEZIONE IMMOBILIARE CIVILE

**OGGETTO: CONSULENZA TECNICA D'UFFICIO ALLA CAUSA CIVILE
N. RUOLO G.E. 268/2016**

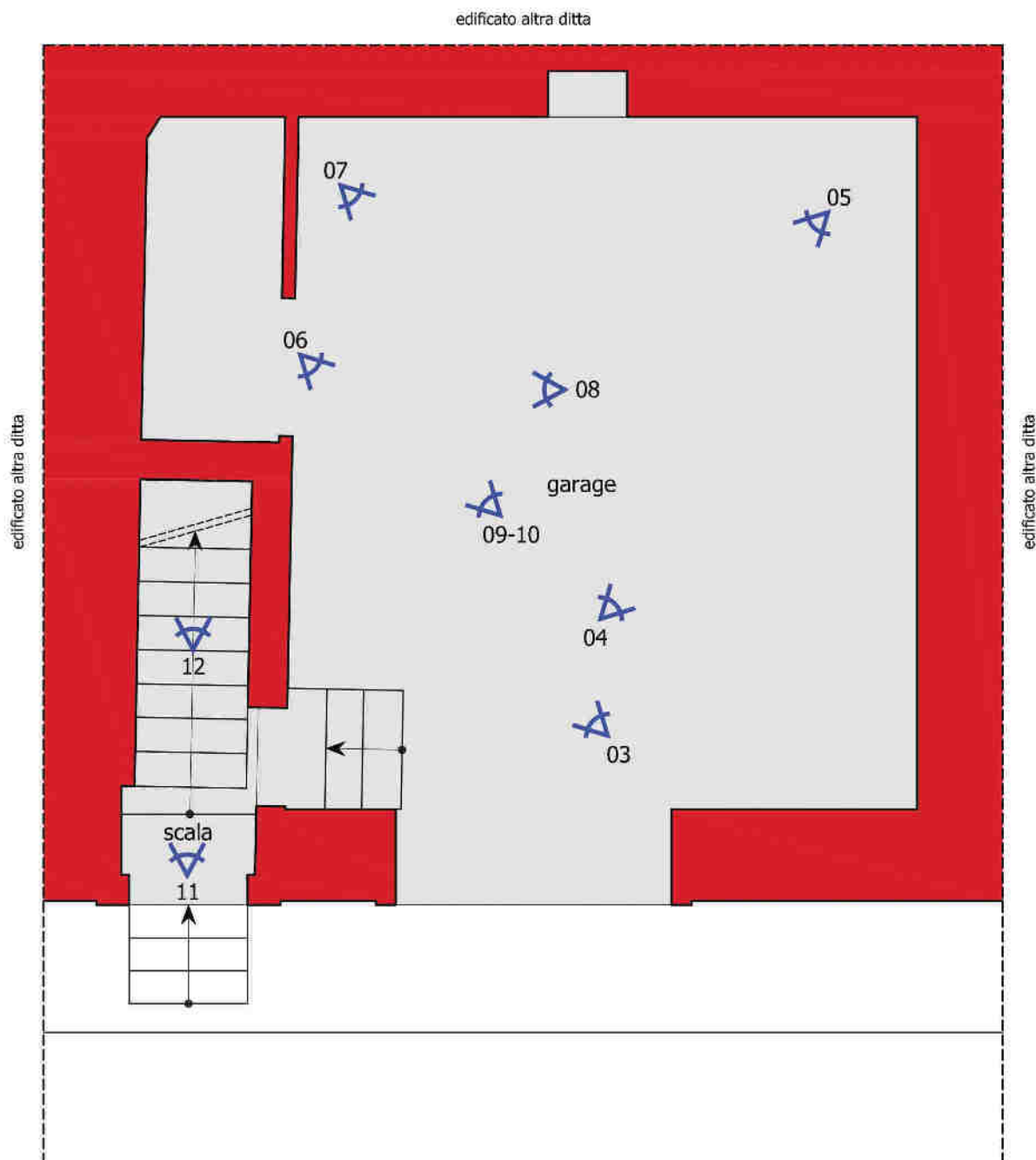
PROMOSSA DA:

CONTRO:

GIUDICE: Dr. Fabrizio Cingolani

Comiso lì gennaio 2017

IL C.T.U.



PIANTA PIANO TERRA

01

02



01



02



03



04



05



06



07



08



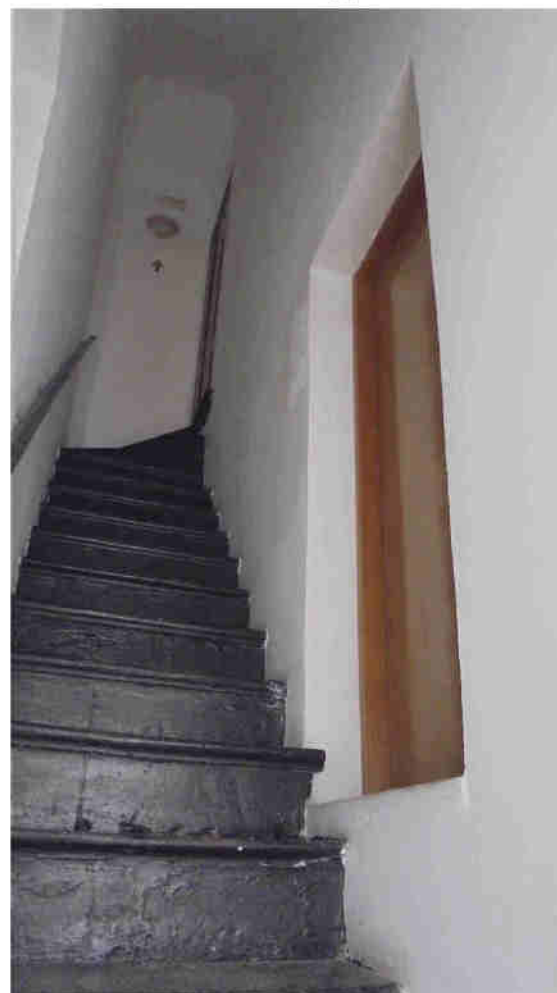
09



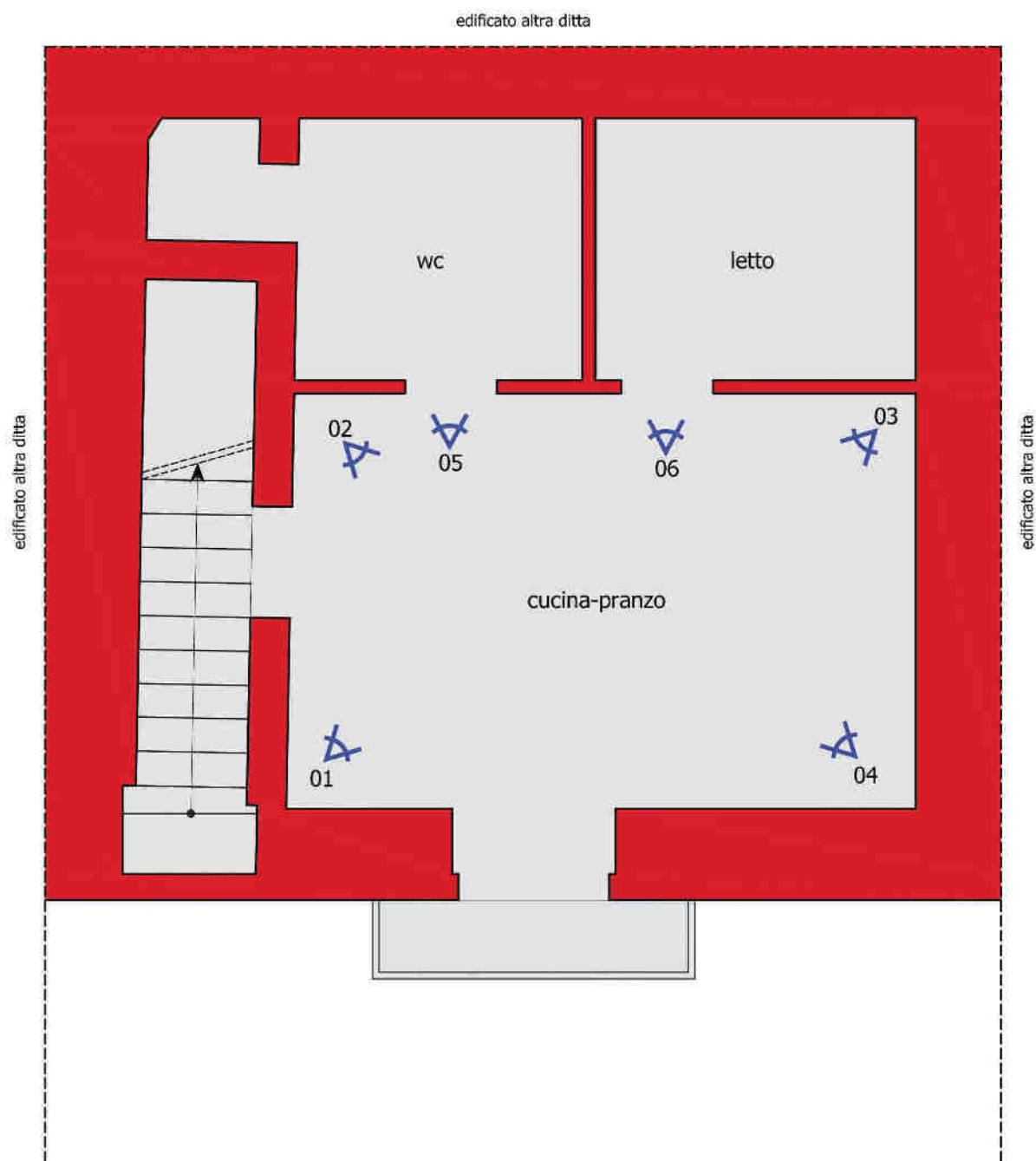
10



11



12



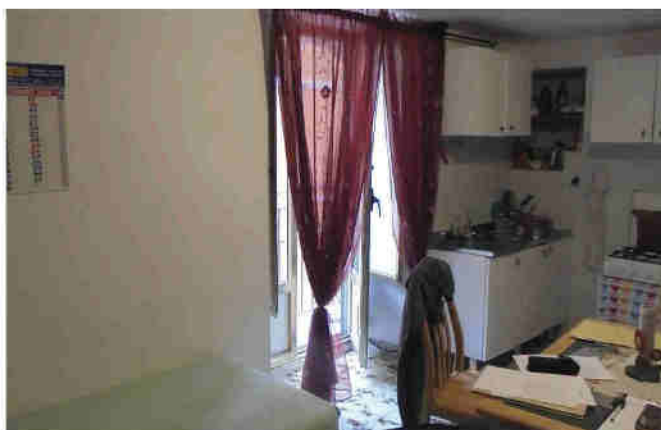
PIANTA PIANO PRIMO



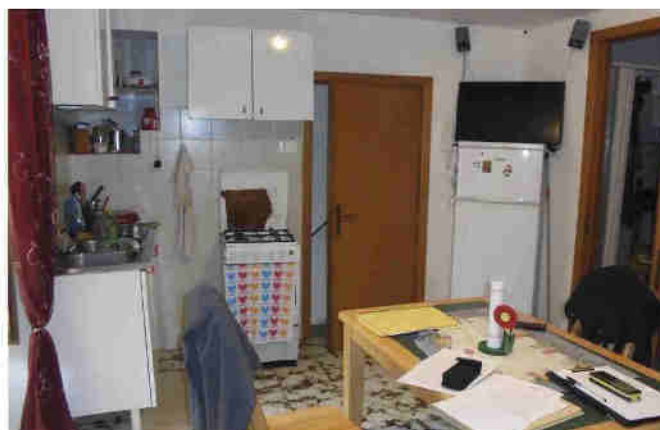
01



02



03



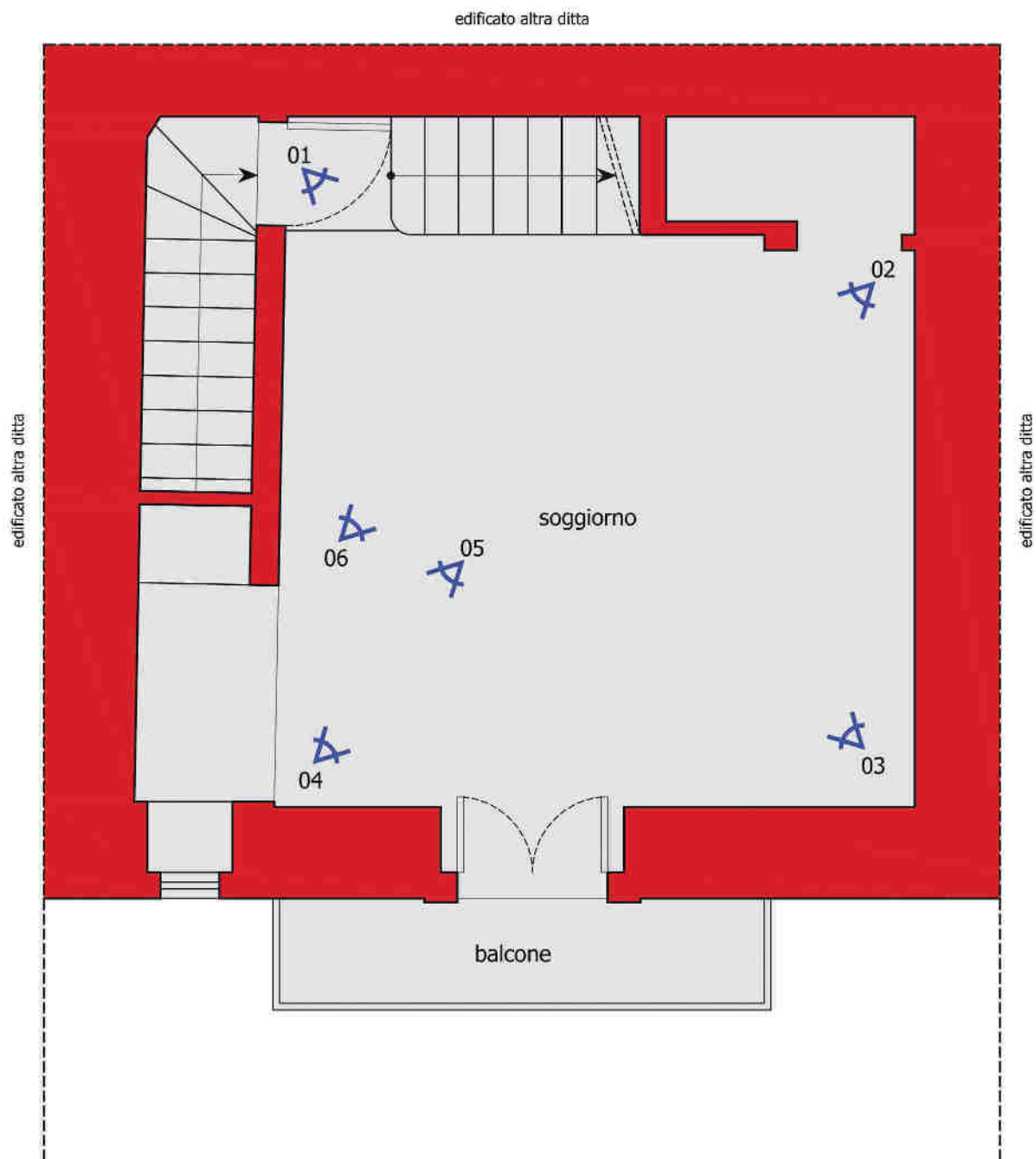
04



05



06



PIANTA PIANO SECONDO



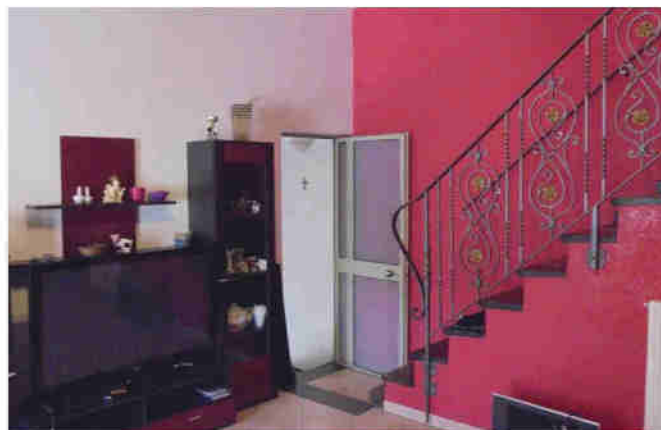
01



02



03



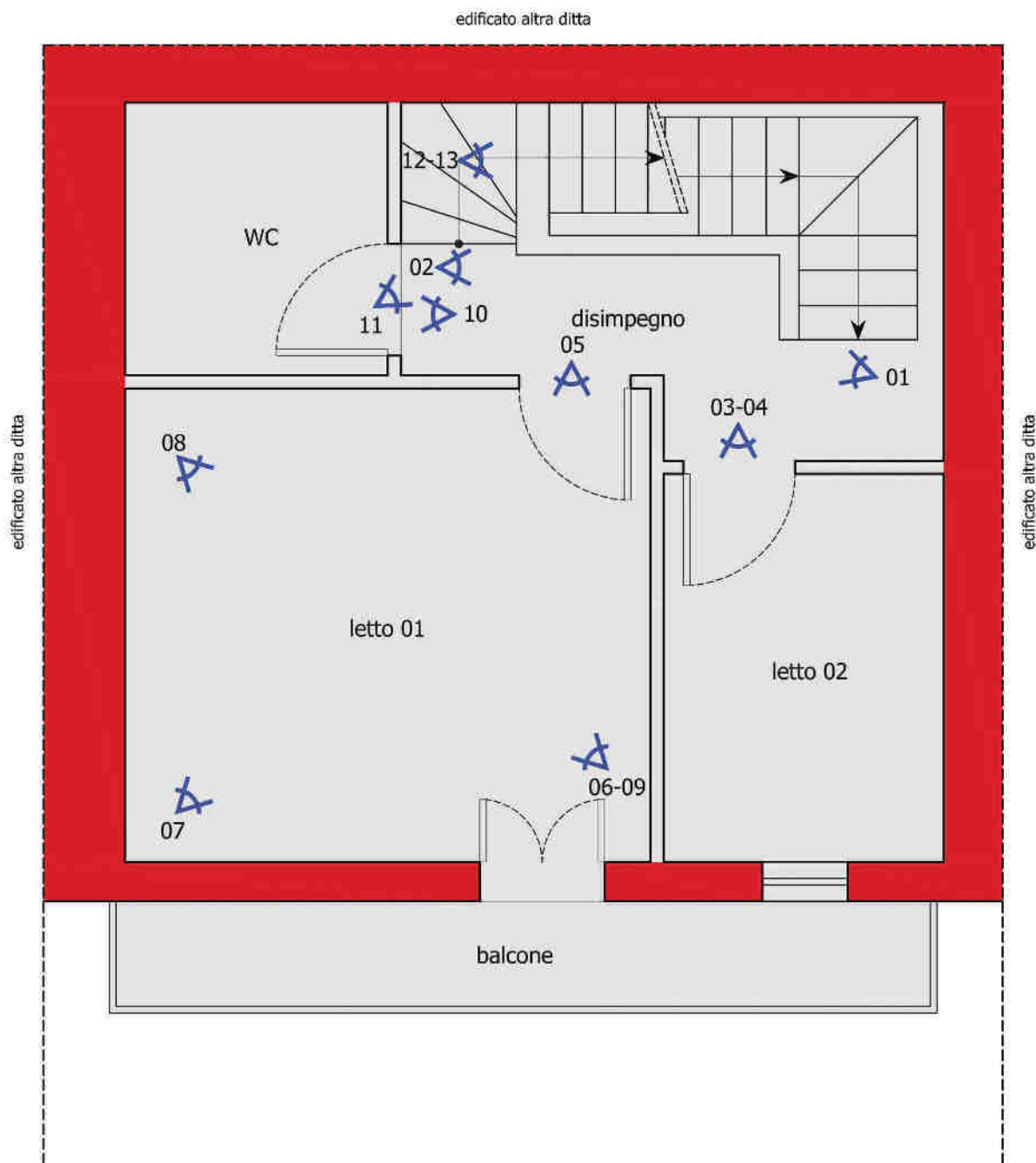
04



05



06



PIANTA PIANO TERZO



01



02



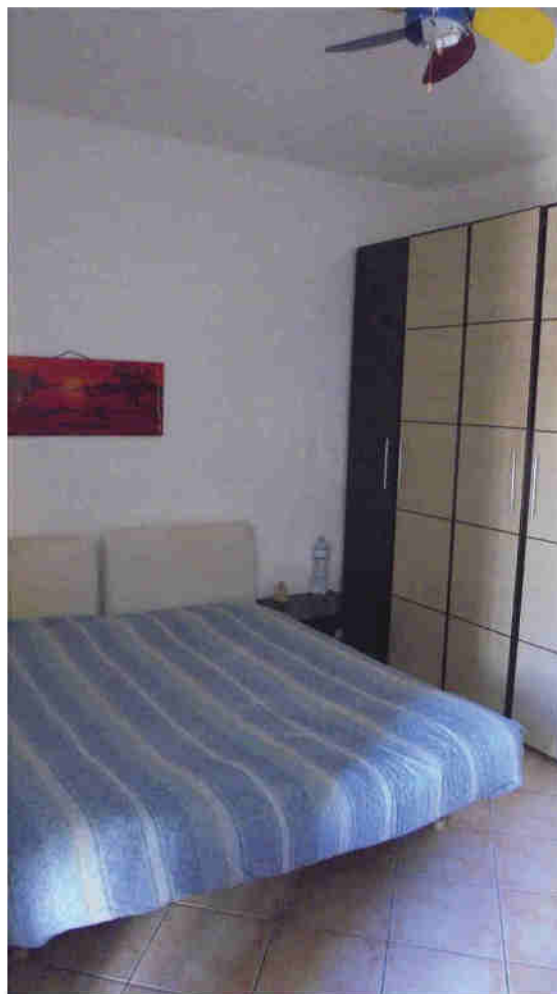
03



04



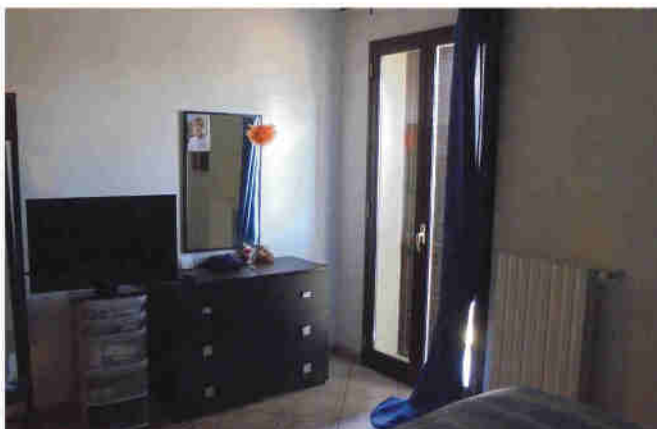
05



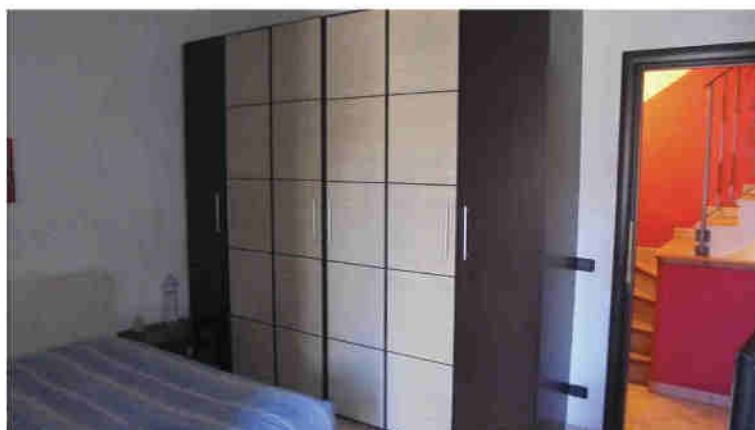
06



07



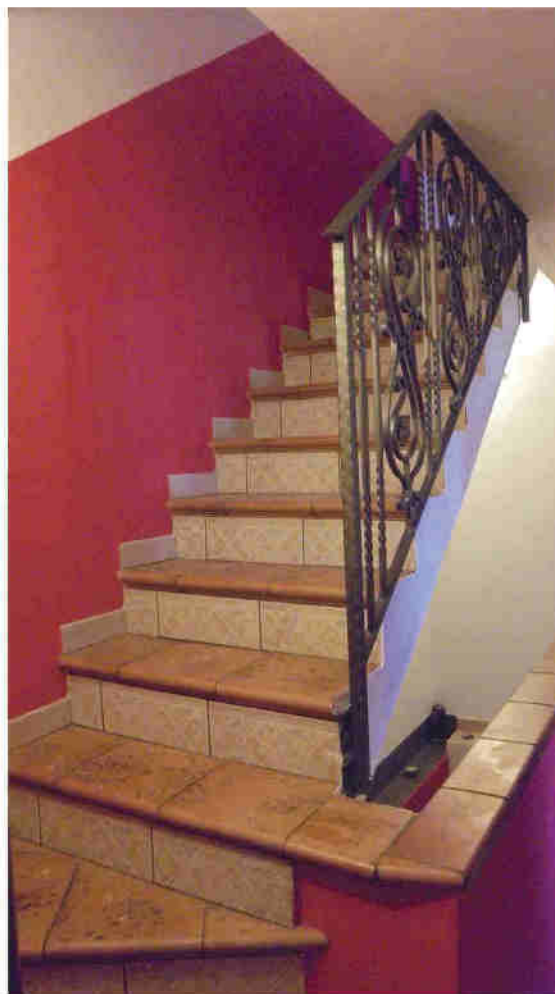
08



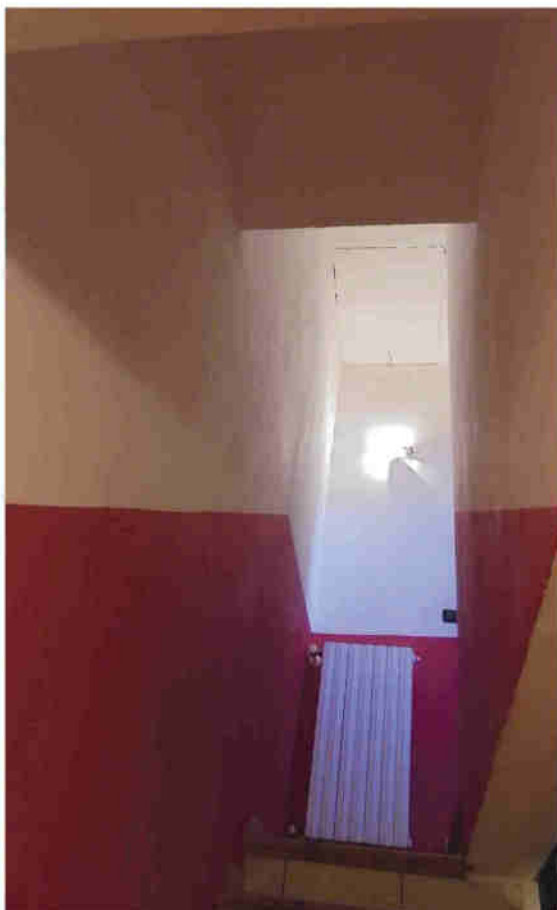
09



10



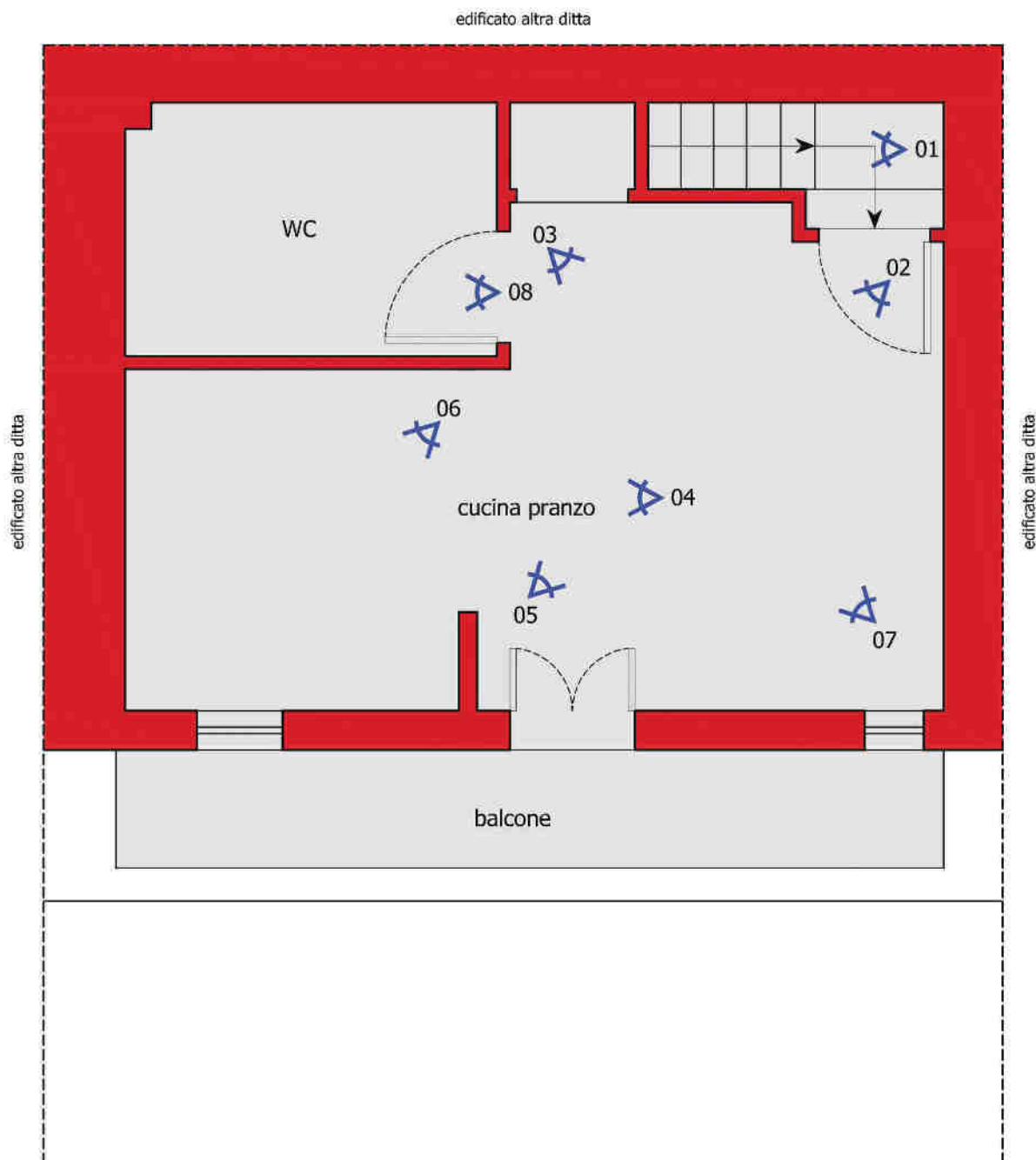
11



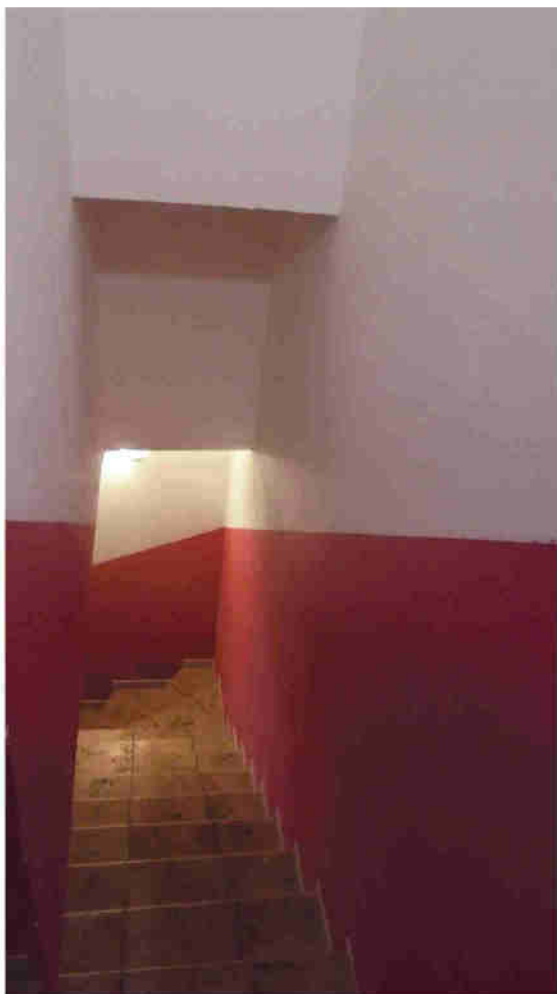
12



13



PIANTA PIANO QUARTO



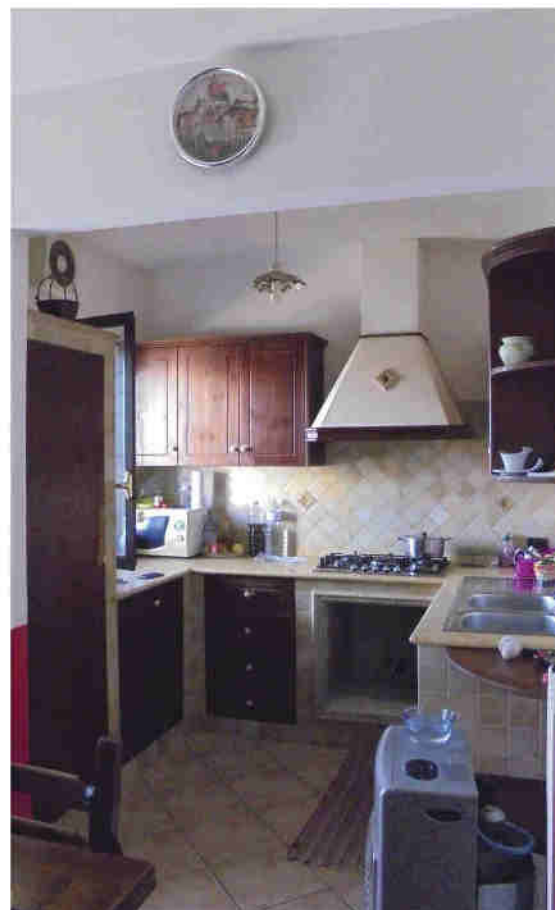
01



02



03



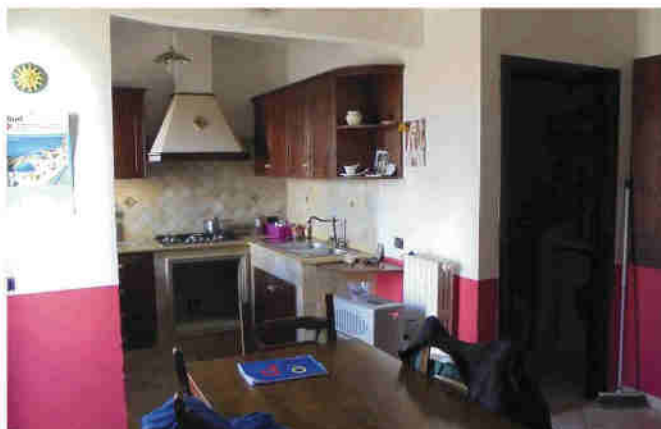
04



05



06



07



08