

TRIBUNALE DI TRAPANI
SEZIONE CIVILE
Ufficio Esecuzioni Immobiliari

PROCEDURA ESECUTIVA N. 95/2018 R.G.E.

G.E.: Dott. Hamel

CUSTODE GIUDIZIARIO Avv. Antonella Venza

Documentazione Fotografica

D. Fo.

aprile 2019

L'esperto estimatore

arch. M. Valentina Calvino
via del Mandorlo, 25/a - 91100 Trapani

cell 328 2456698
valentinacalvino31@gmail.com



Fronte via Archimede Fronte via Fabio

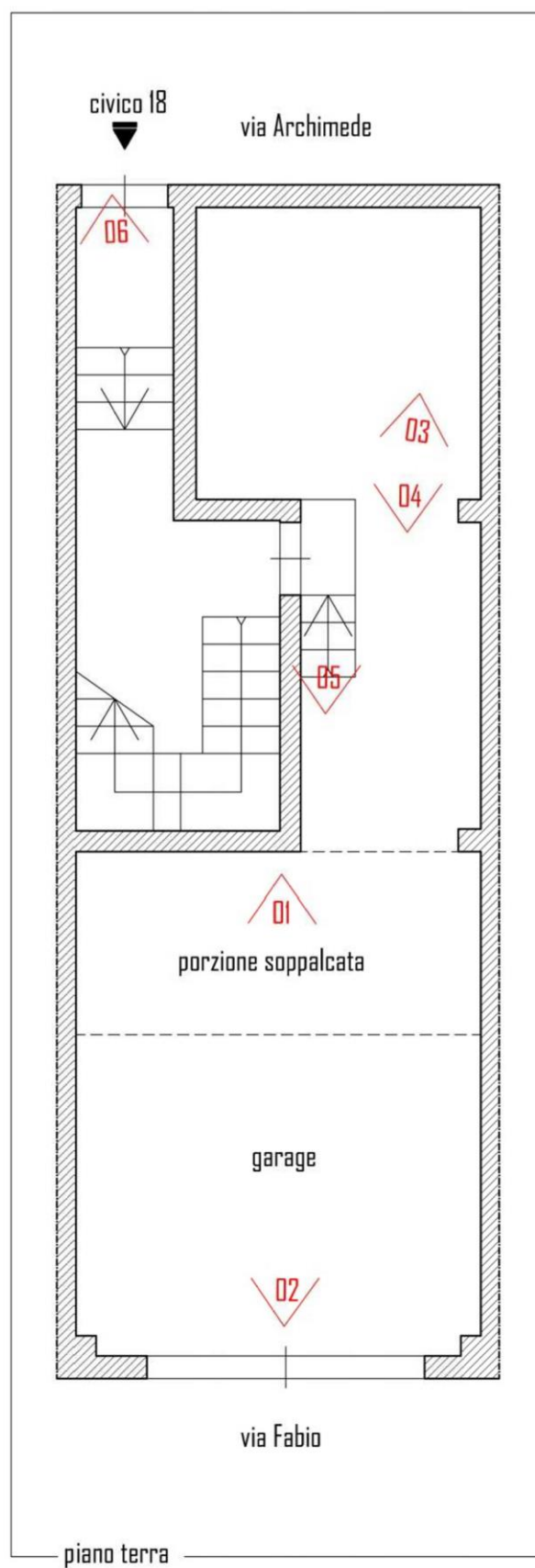




Foto 01

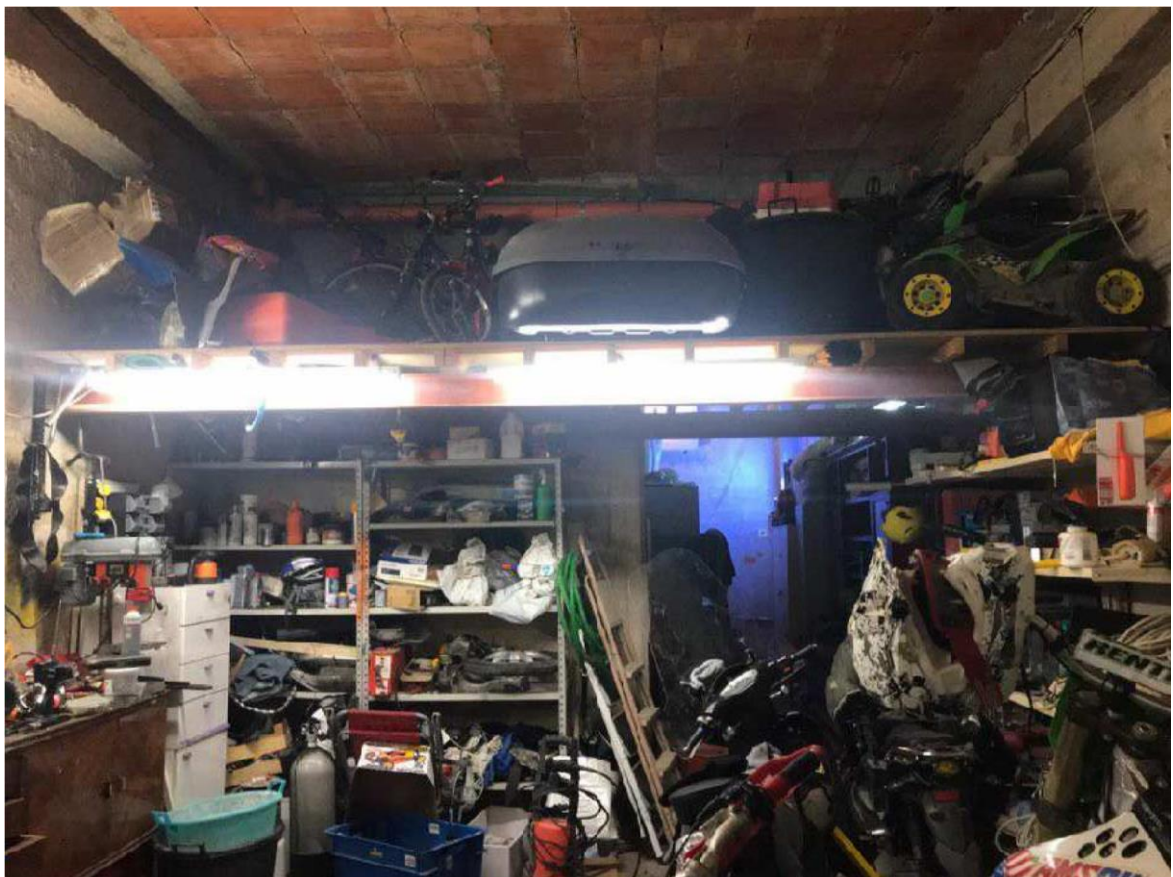


Foto 02

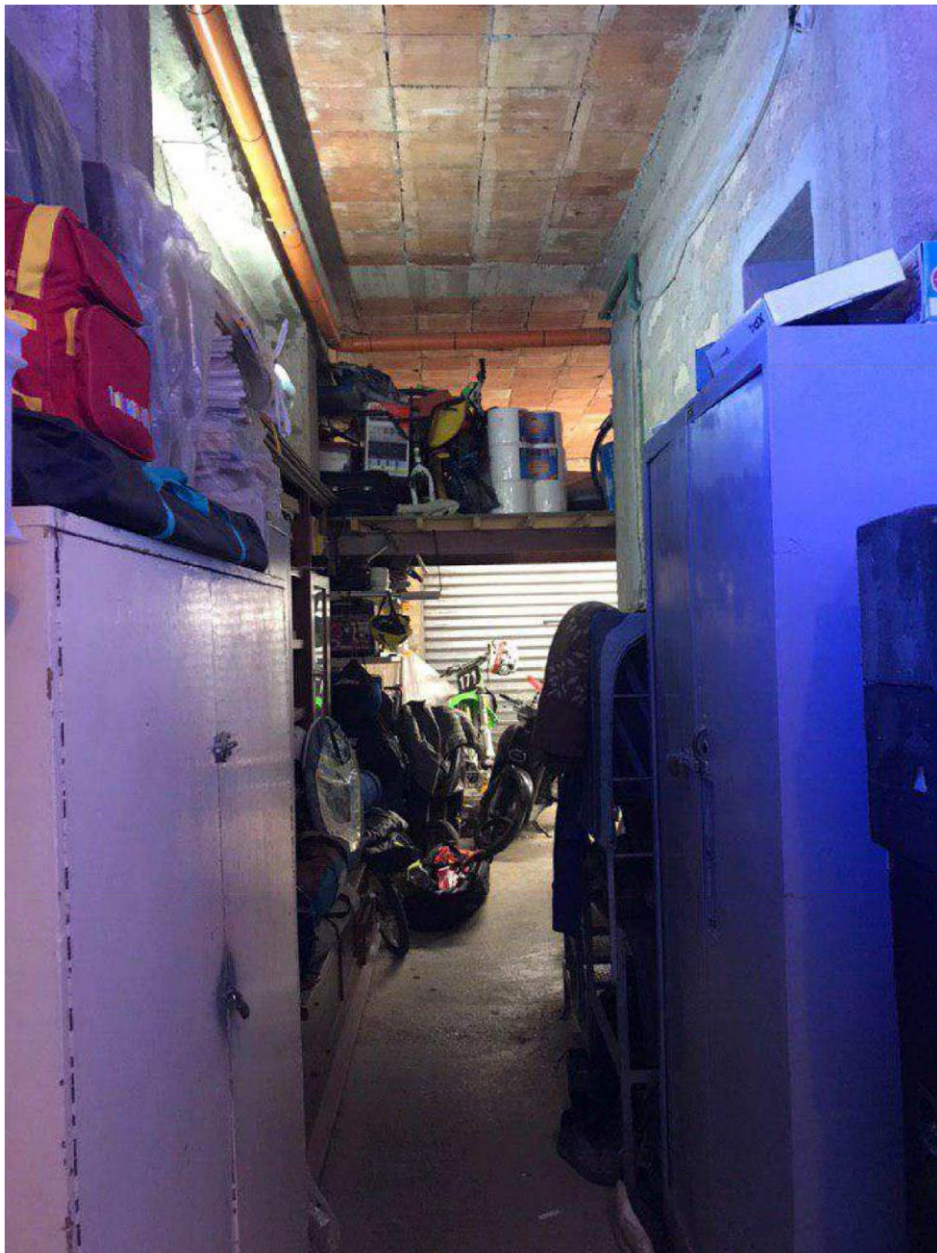


Foto 03



Foto 04

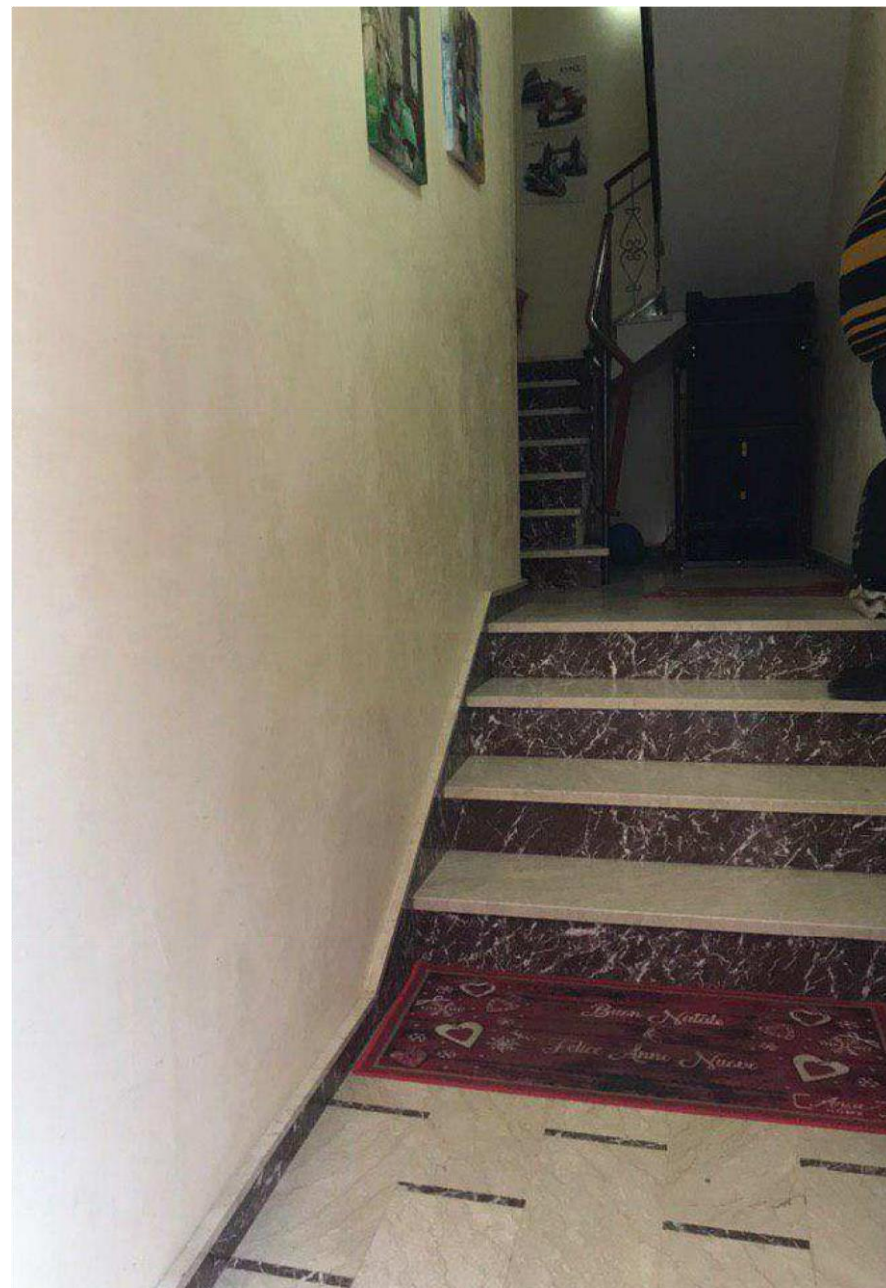


Foto 05 Foto 06

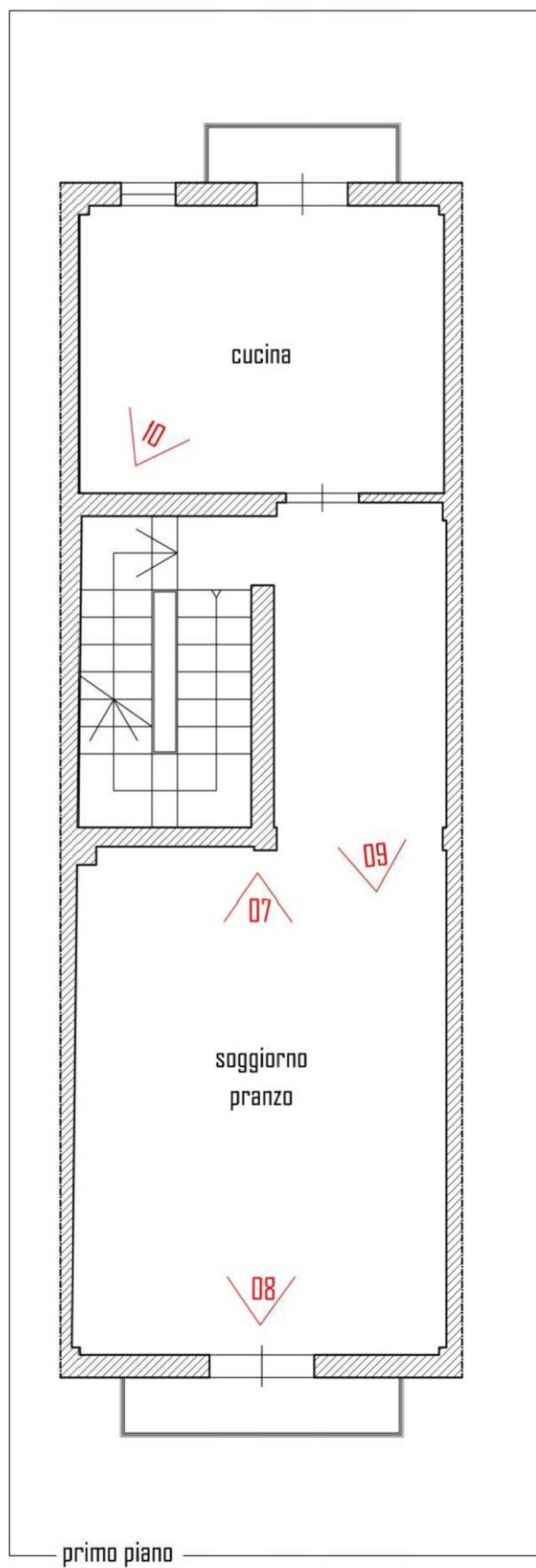




Foto 07

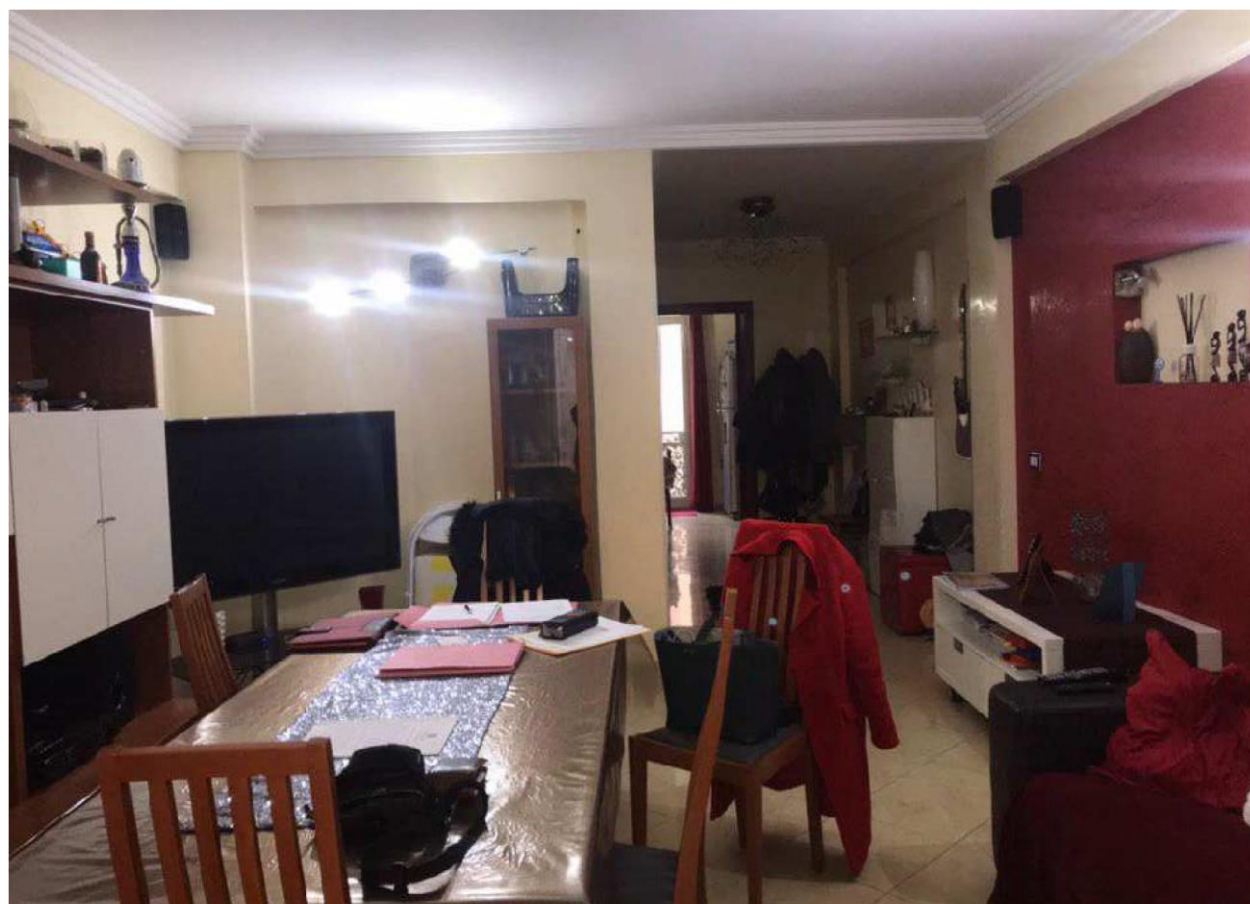


Foto 08

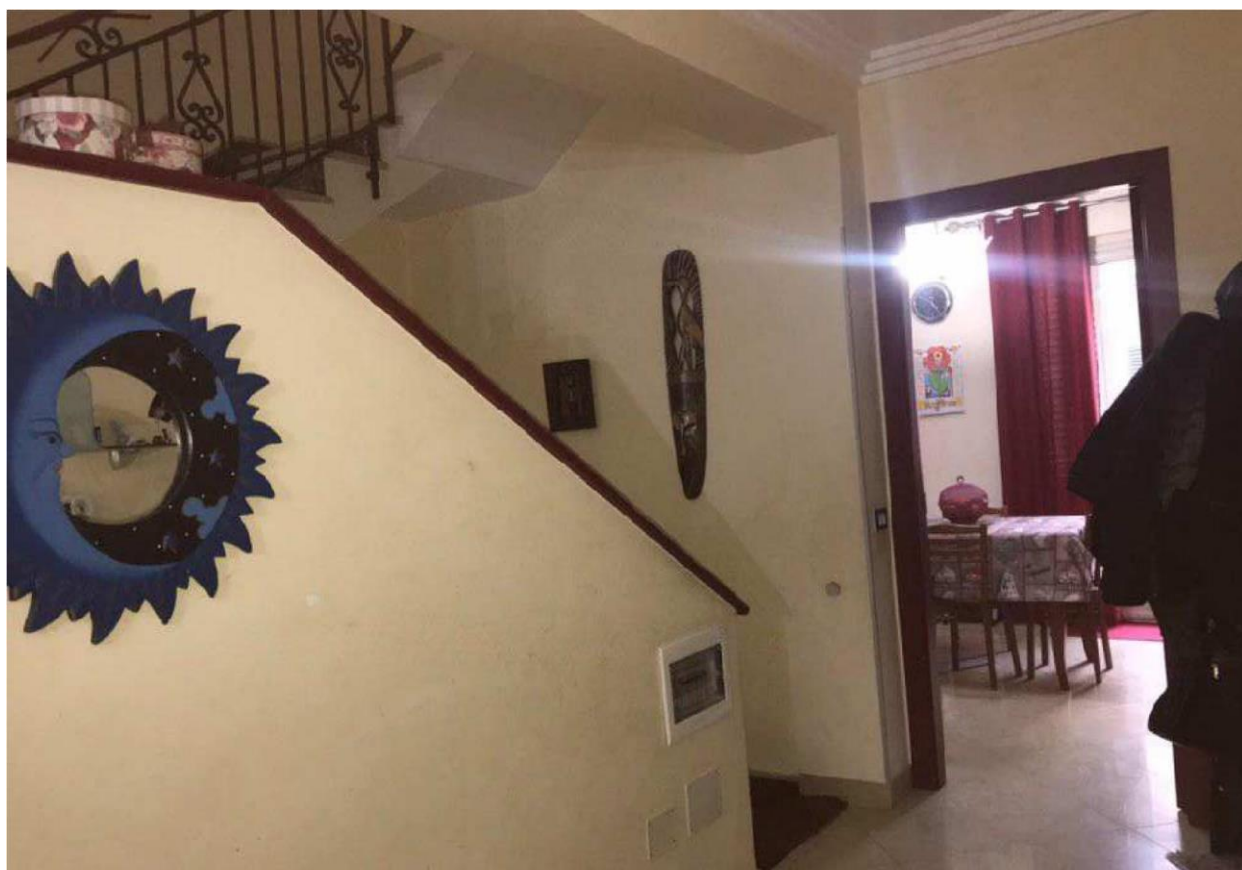


Foto 09

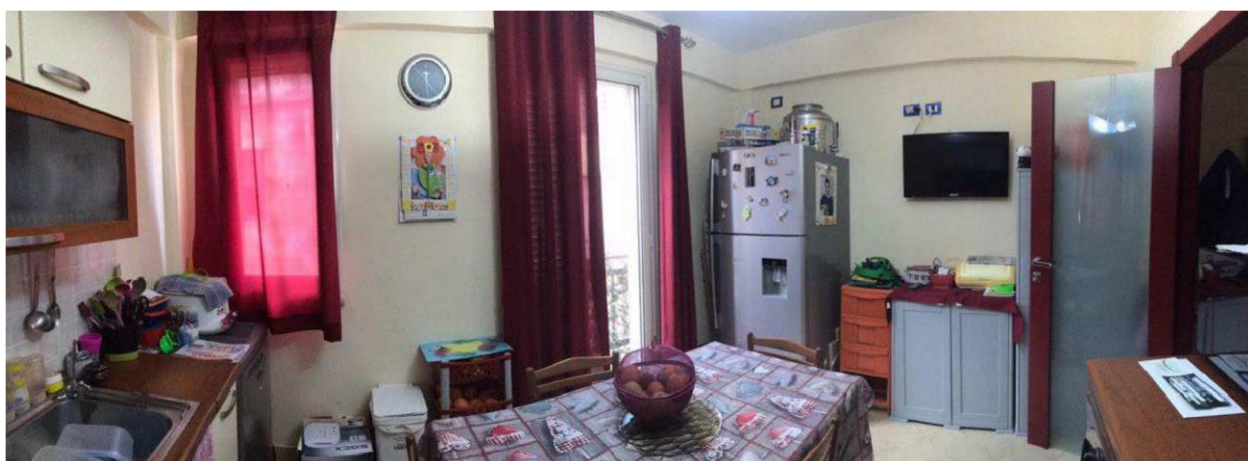


Foto 10

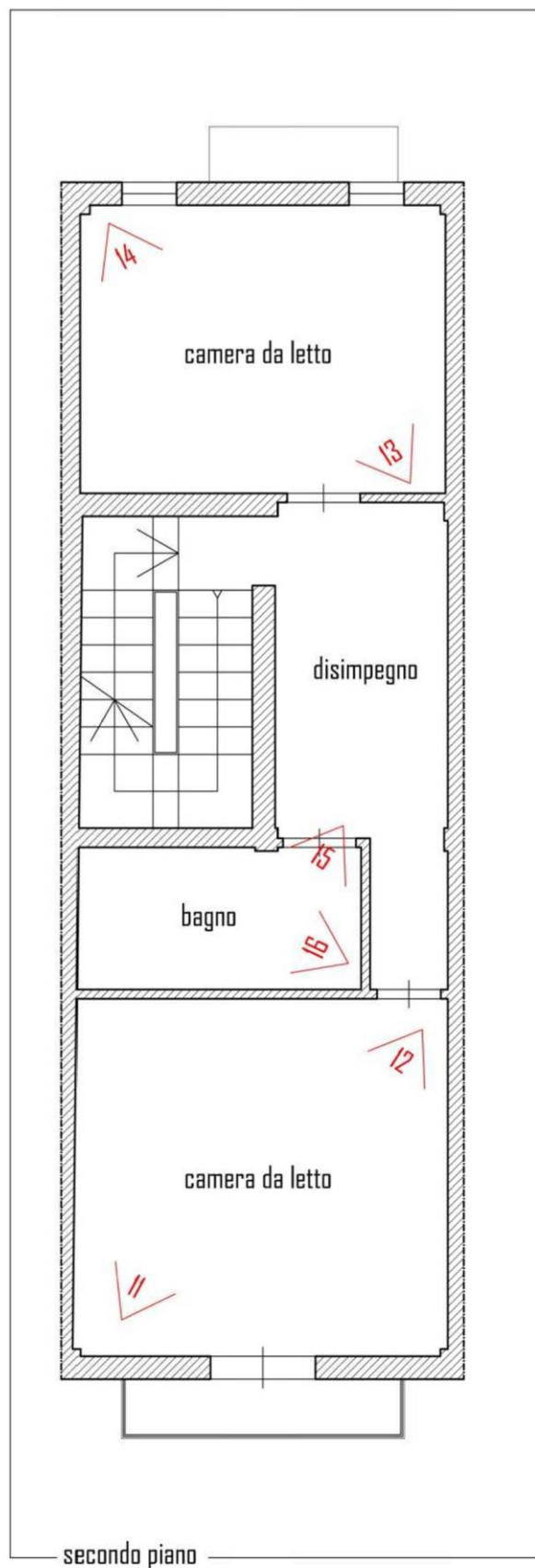




Foto 11



Foto 12

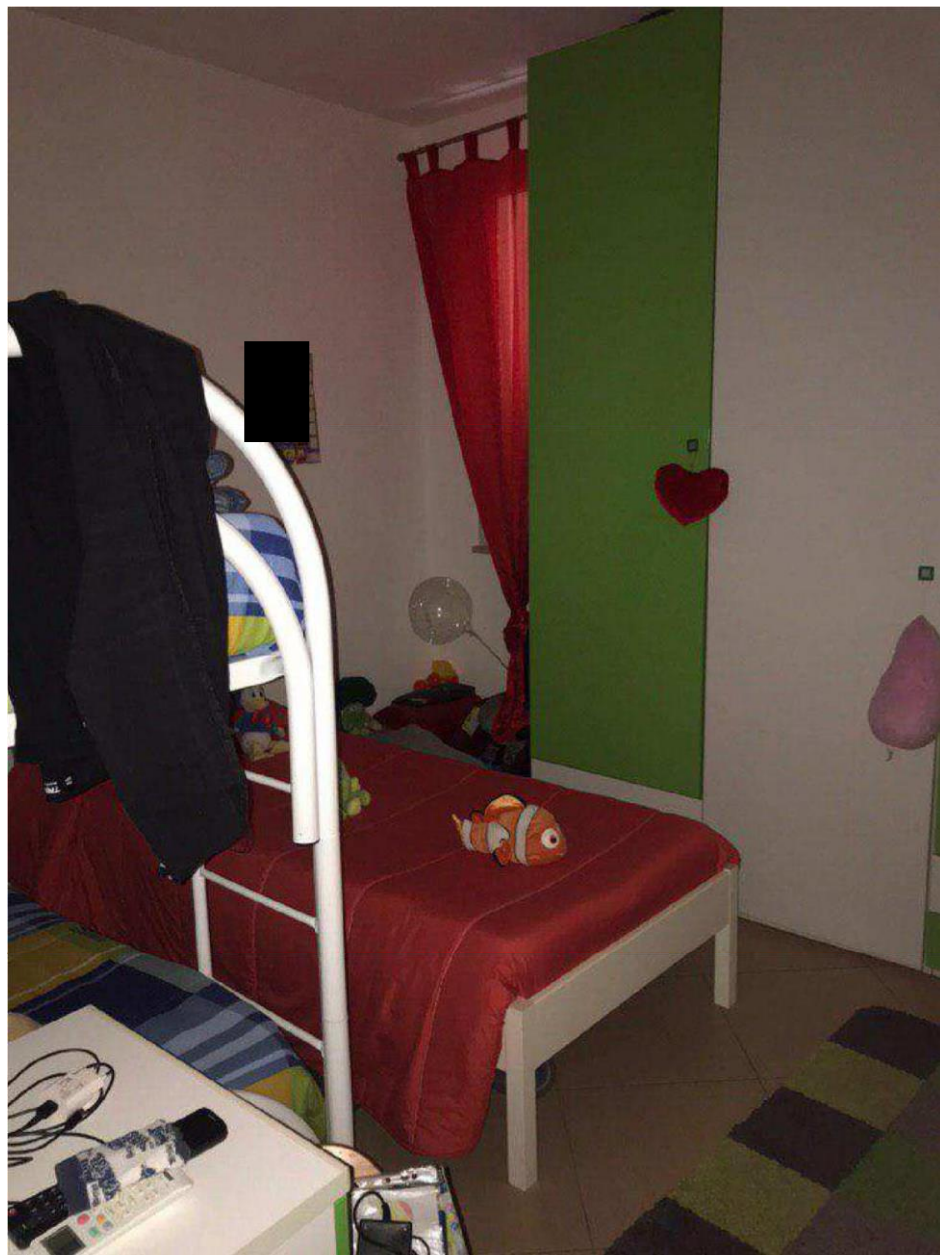


Foto 13 Foto 14

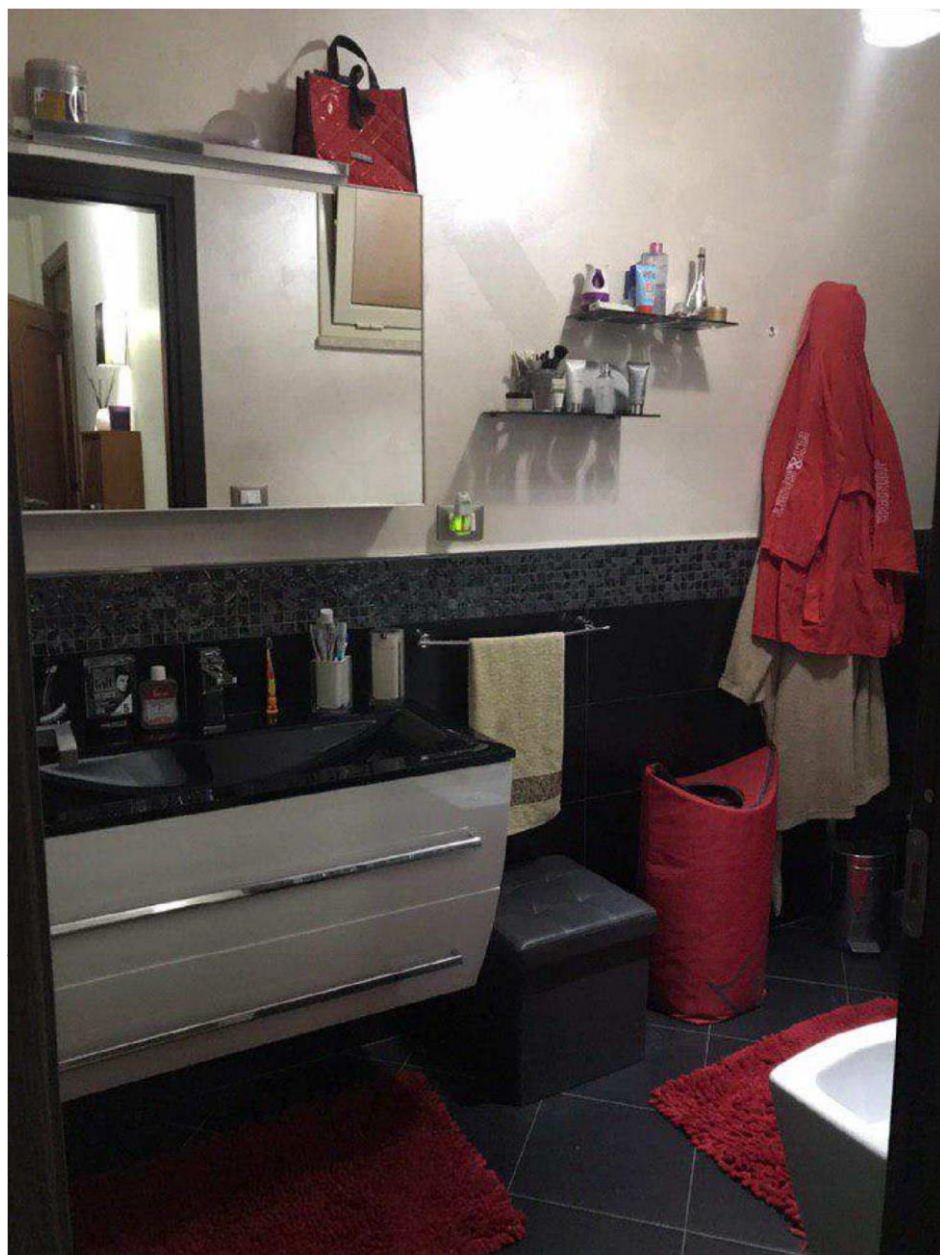
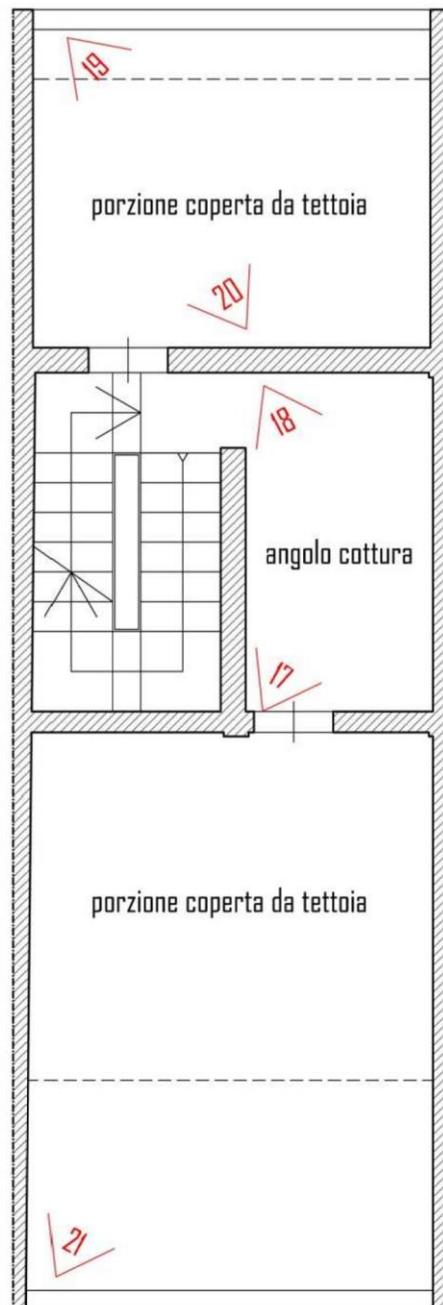


Foto 15 Foto 16



piano delle terrazze

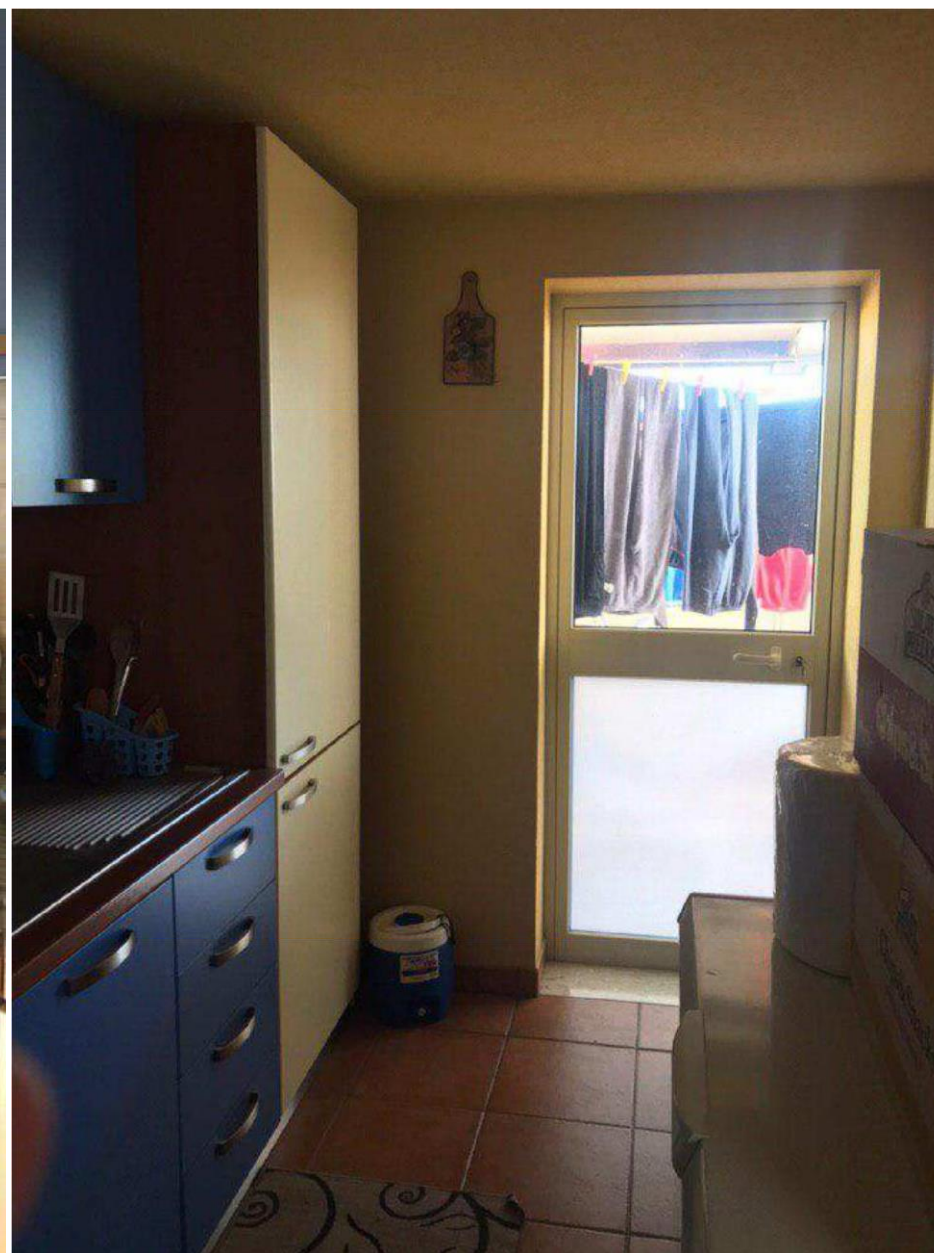


Foto 17 Foto 18



Foto 19 Foto 20



Foto 21