

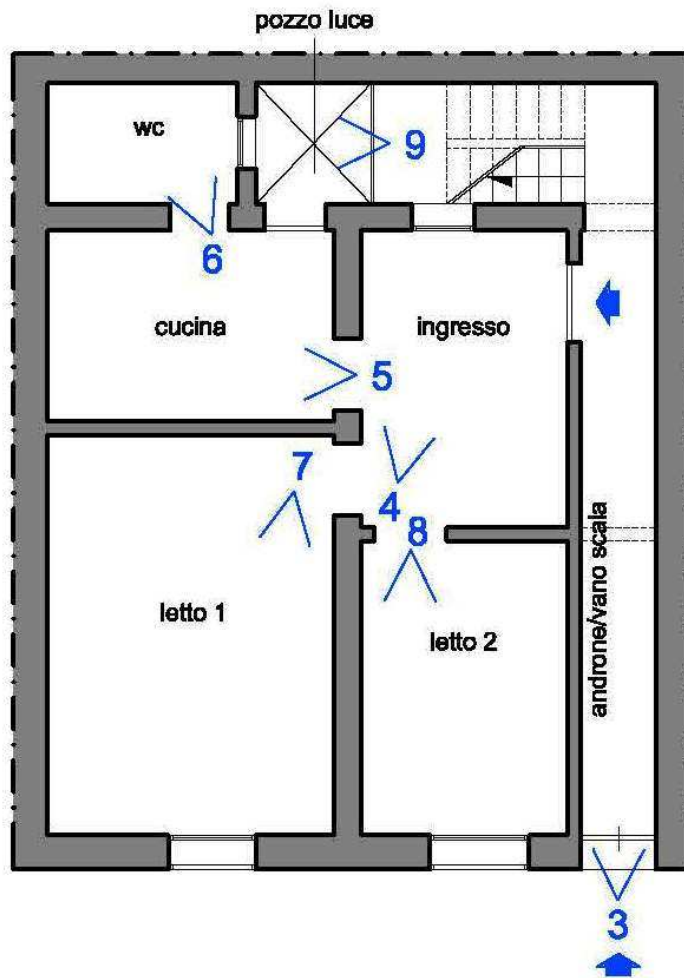
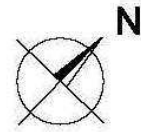
Fabbricato ubicato Via Sicilia n.9 (ex Via Belice) - Trapani
(Trapani Fg. 9 p.lla 457 sub. 1,2,3,4)



RIPRESE FOTOGRAFICHE

UNITA' IMM. - TRAPANI FG. 9 P.LLA 457 SUB. 1

PIANTA PIANO TERRA



Via Sicilia

2

1





Foto 1 – Prospetto su Via Sicilia



Foto 2 - Prospetto su Via Sicilia





Foto 3 – Ingresso vano scala (SUB.4)



Foto 4





Foto 5



Foto 6





Foto 7



Foto 8





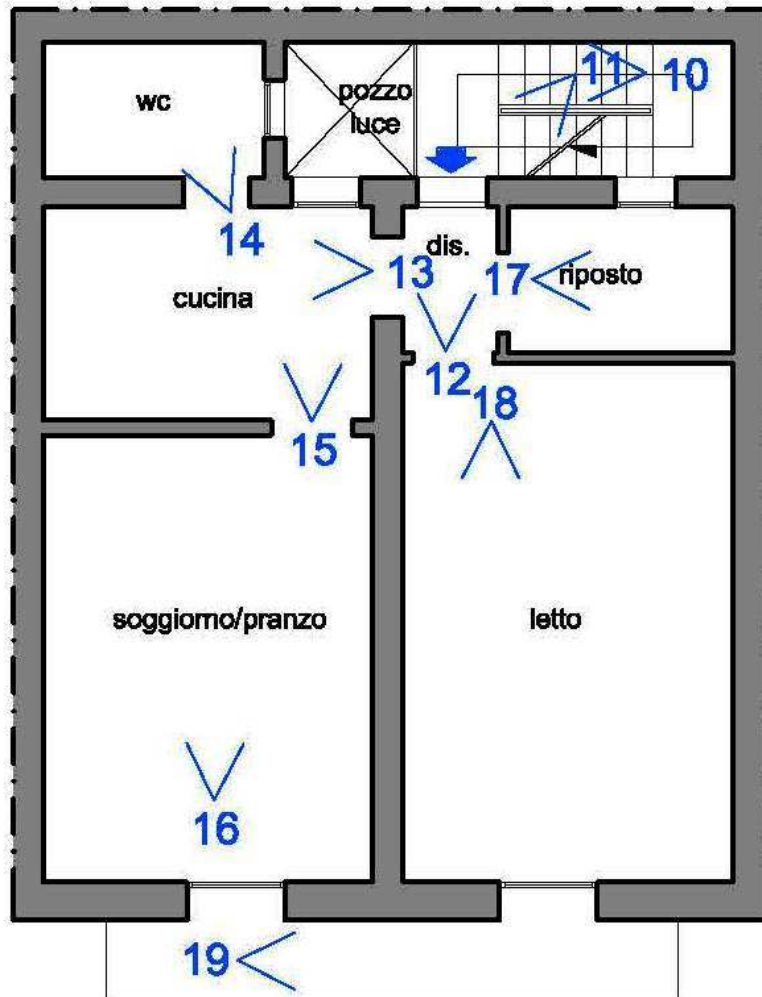
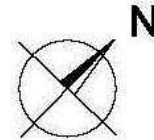
Foto 9 – Pozzo luce vano scala (SUB.4)



RIPRESE FOTOGRAFICHE

UNITA' IMM. - TRAPANI FG. 9 P.LLA 457 SUB. 2

PIANTA PIANO PRIMO



Via Sicilia





Foto 10 (SUB.4)



Foto 11





Foto 12



Foto 13





Foto 14



Foto 15





Foto 16



Foto 17





Foto 18

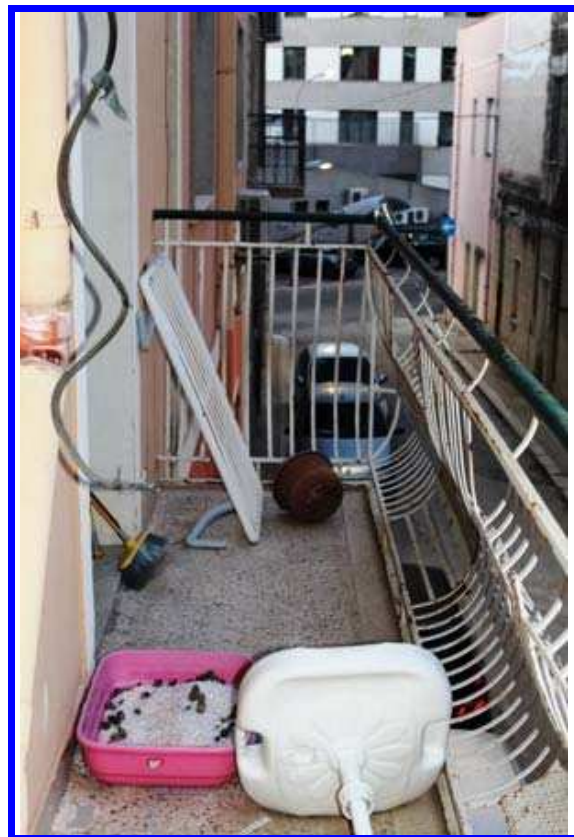


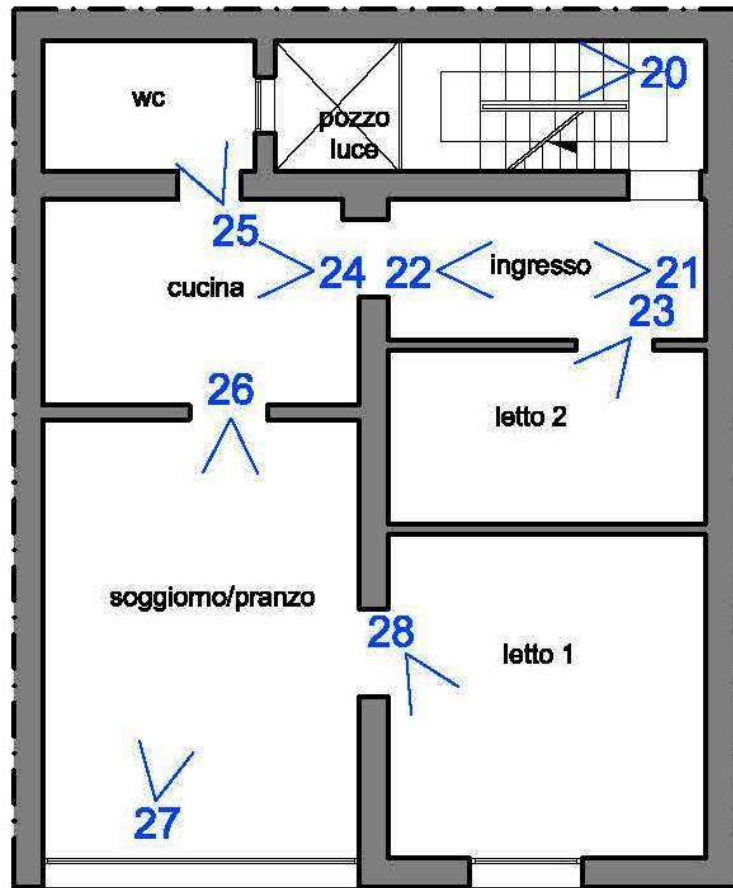
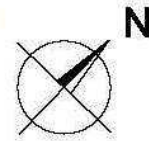
Foto 19



RIPRESE FOTOGRAFICHE

UNITA' IMM. - TRAPANI FG. 9 P.LLA 457 SUB. 3

PIANTA PIANO SECONDO



Via Sicilia



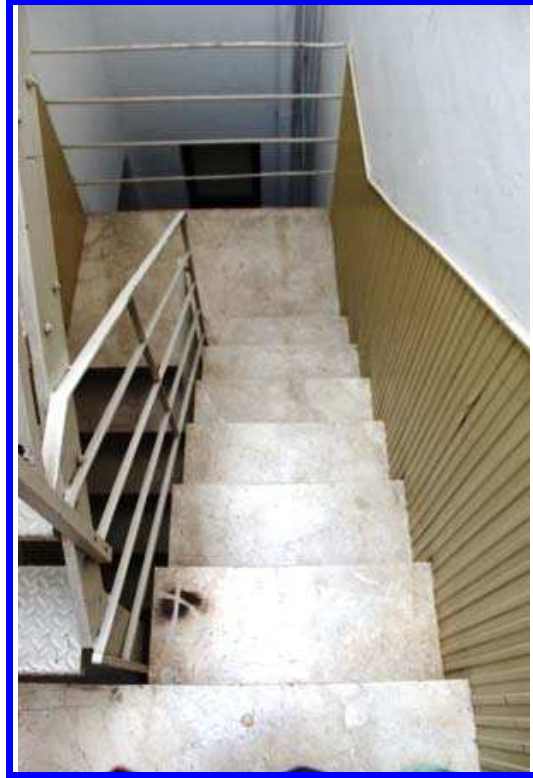


Foto 20 – Vano Scala (SUB.4)



Foto 21





Foto 22



Foto 23





Foto 24



Foto 25





Foto 26



Foto 27





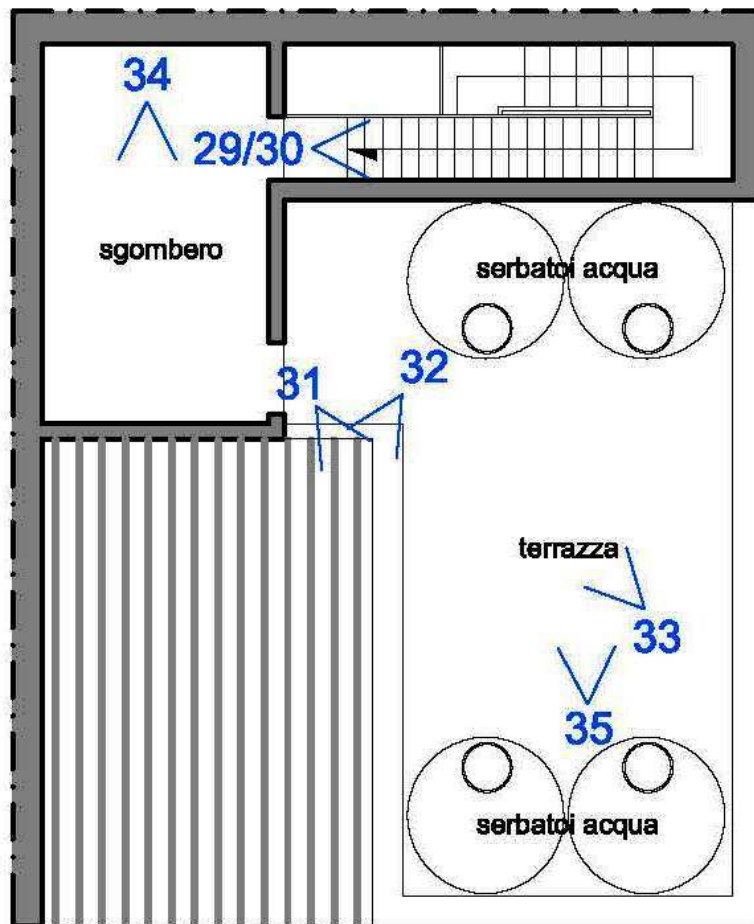
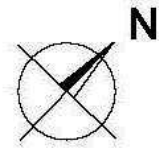
Foto 28



RIPRESE FOTOGRAFICHE

UNITA' IMM. - TRAPANI FG. 9 P.LLA 457 SUB. 3

PIANTA PIANO TERZO



Via Sicilia



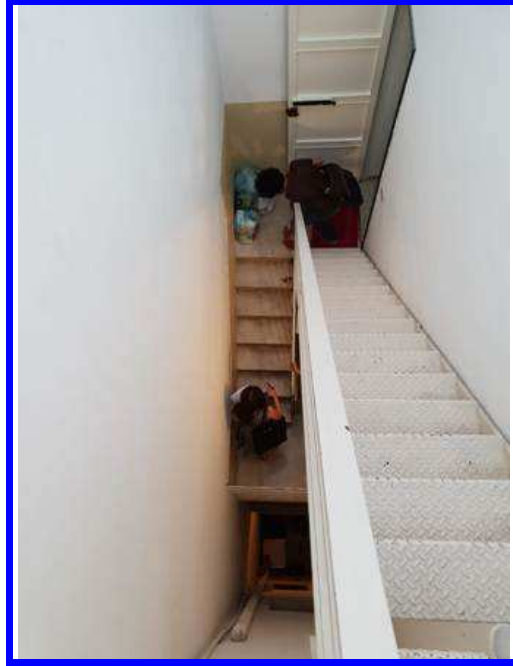


Foto 29 – Scala in ferro d'accesso al
piano terrazzo (SUB.4)



Foto 30 - Vano Scala (SUB.4)





Foto 31



Foto 32 – copertura in coibentato del
Vano soggiorno/pranzo del P.2°





Foto 33 – Locale sgombero (copertura in cemento-amianto)



Foto 34





Foto 35

