

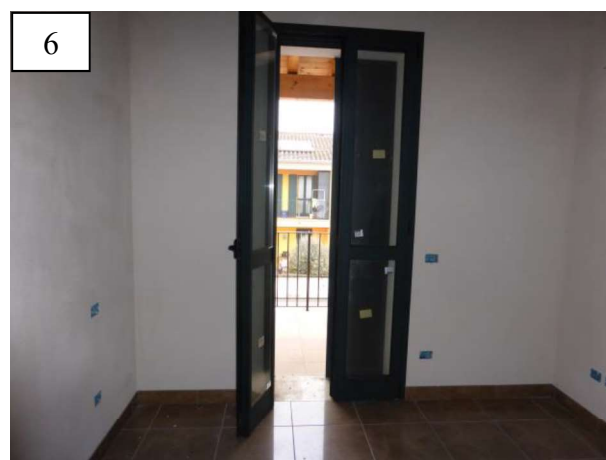
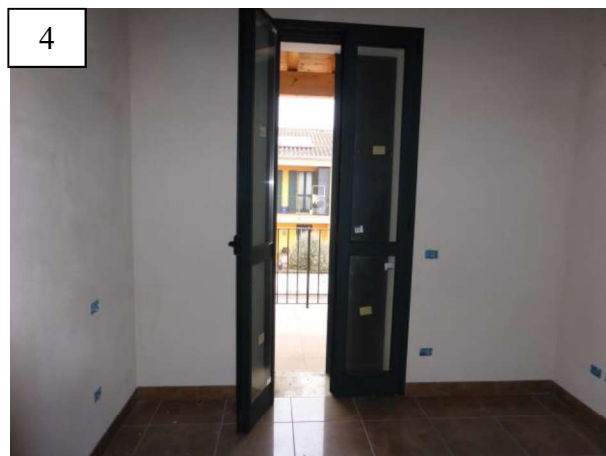
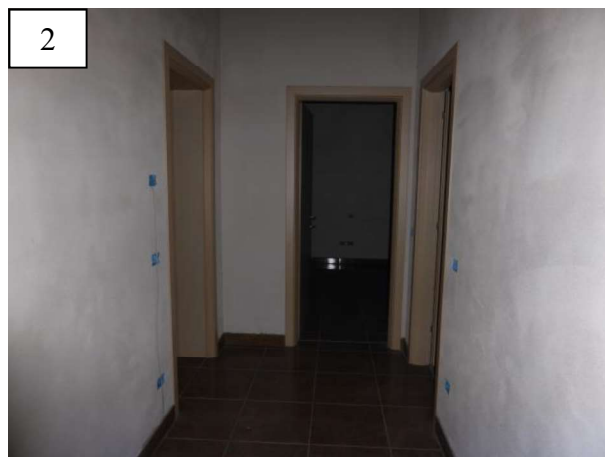
# DOCUMENTAZIONE FOTOGRAFICA

Esec. Imm. R.G.E. 308/2017

**LOTTO 3 (bene 5 e 6) APPARTAMENTO P. 1° e GARAGE - Comune di CASTELLUCCHIO (MN) – Via E. MONDINARI 32.**



Prospetto N-E del fabbricato con ingresso principale





Garage mapp. 141 sub. 12, con cortile antistante esclusivo