

## **DOCUMENTAZIONE FOTOGRAFICA**

### **R.E. 8/2018**

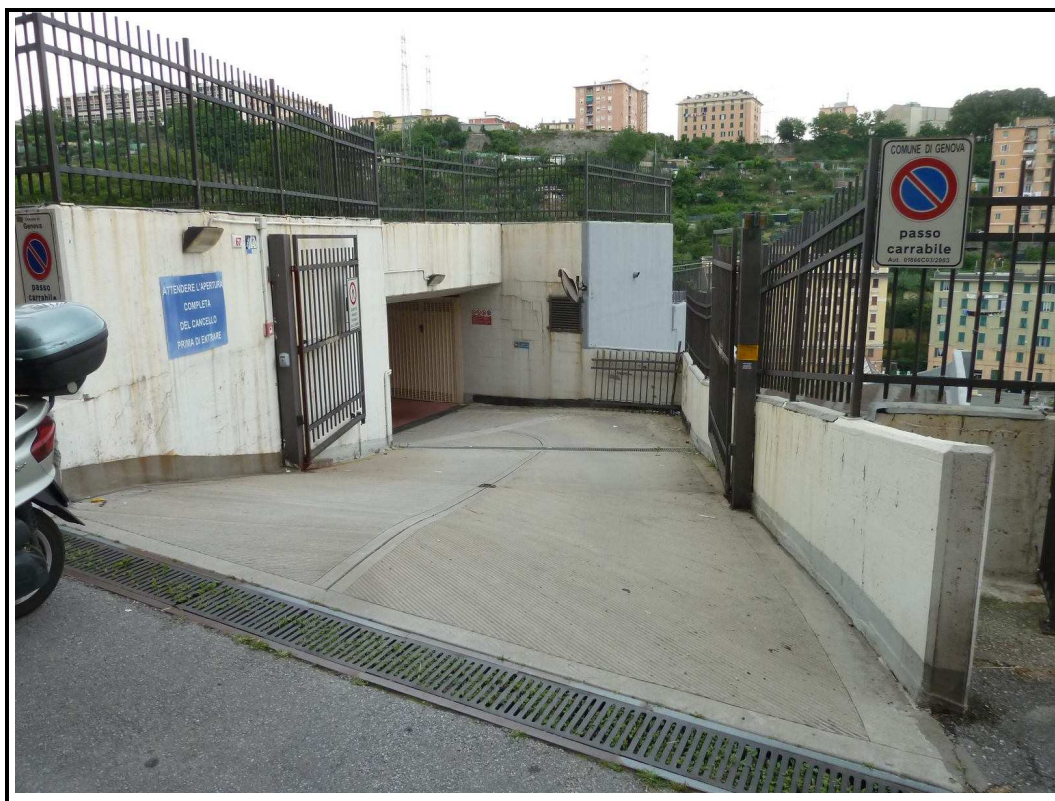


Foto 1 – particolare accesso autorimessa da Via Fanti civ. 67 rosso

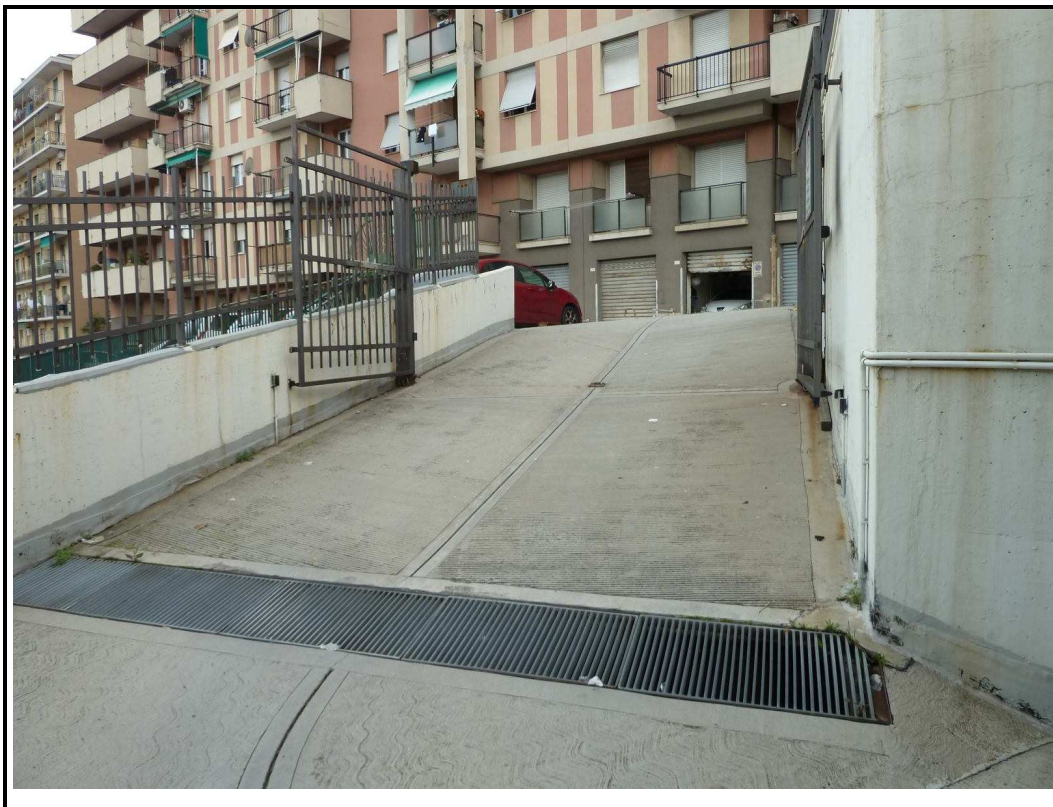


Foto 2 – particolare rampa di accesso al 1° piano interrato

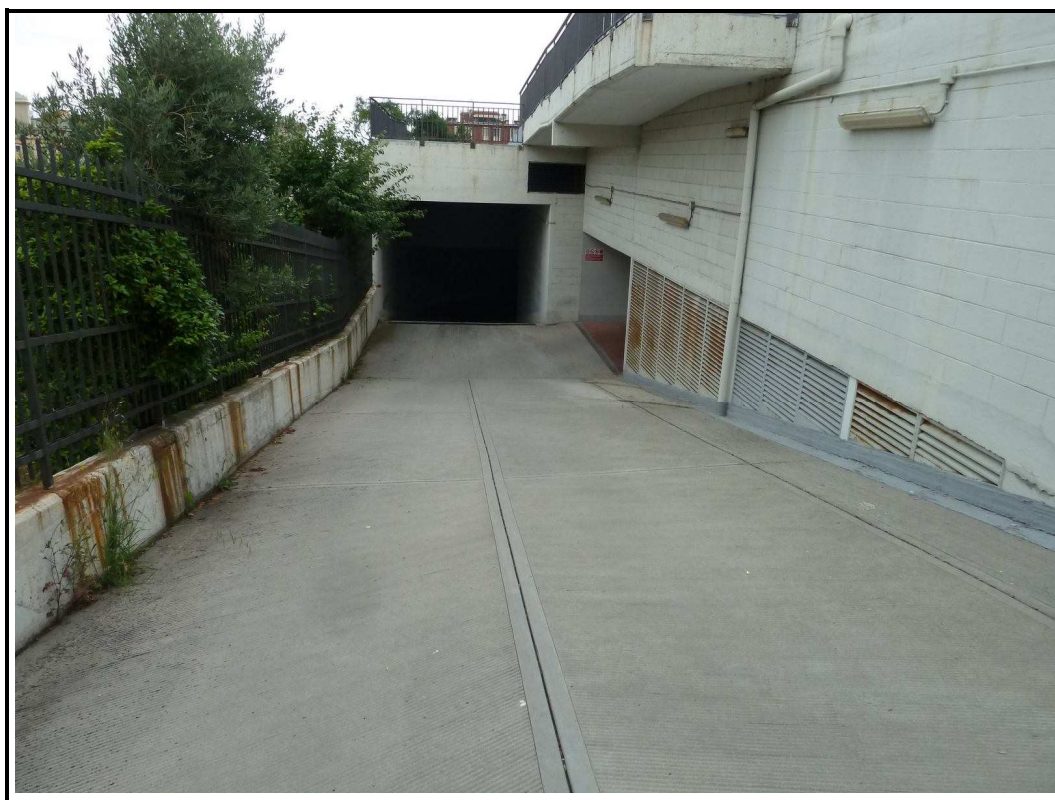


Foto 3 – particolare rampa di accesso tra 1° e 2° piano interrato



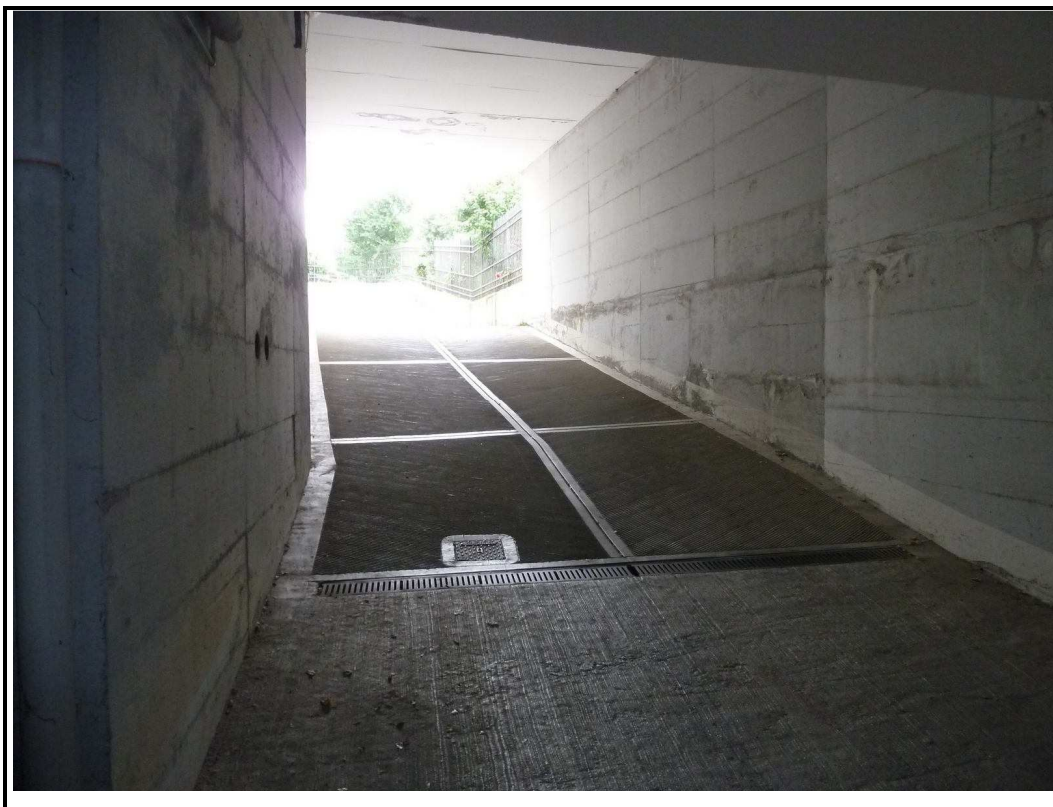


Foto 4 – particolare rampa di accesso al 3° piano interrato



Foto 5 – particolare spazio di manovra condominiale 3° piano interrato

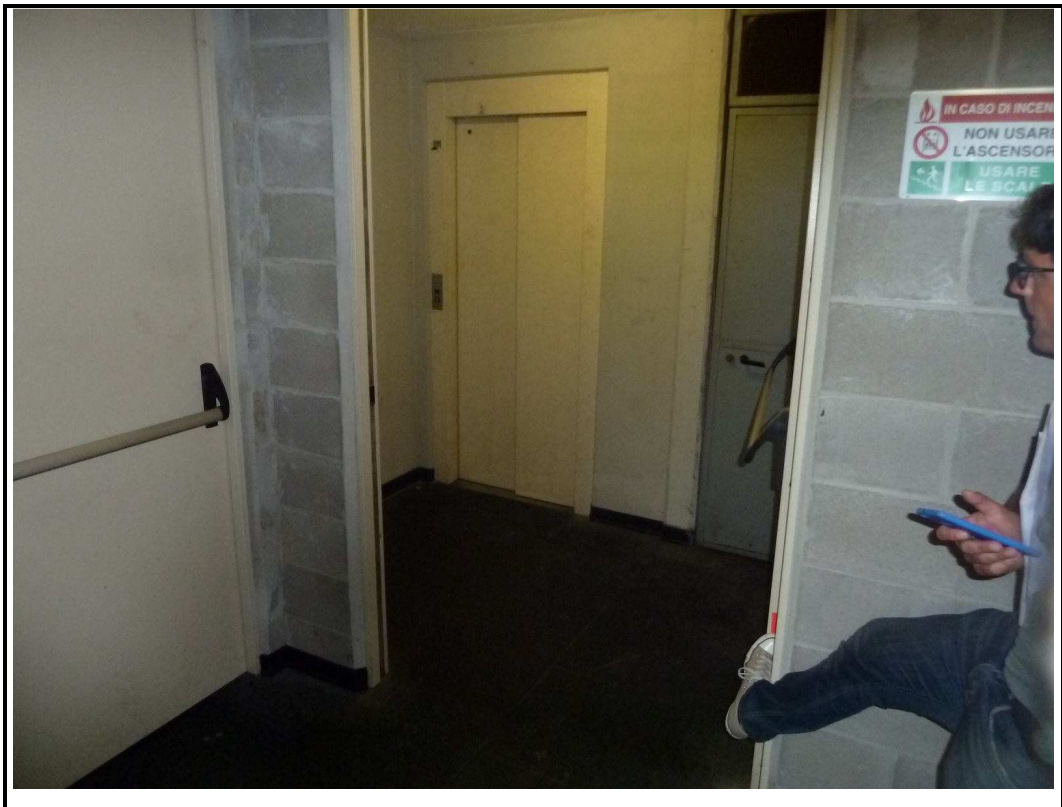


Foto 6 – particolare vano ascensore



Foto 7 – particolare ingresso box n° 48



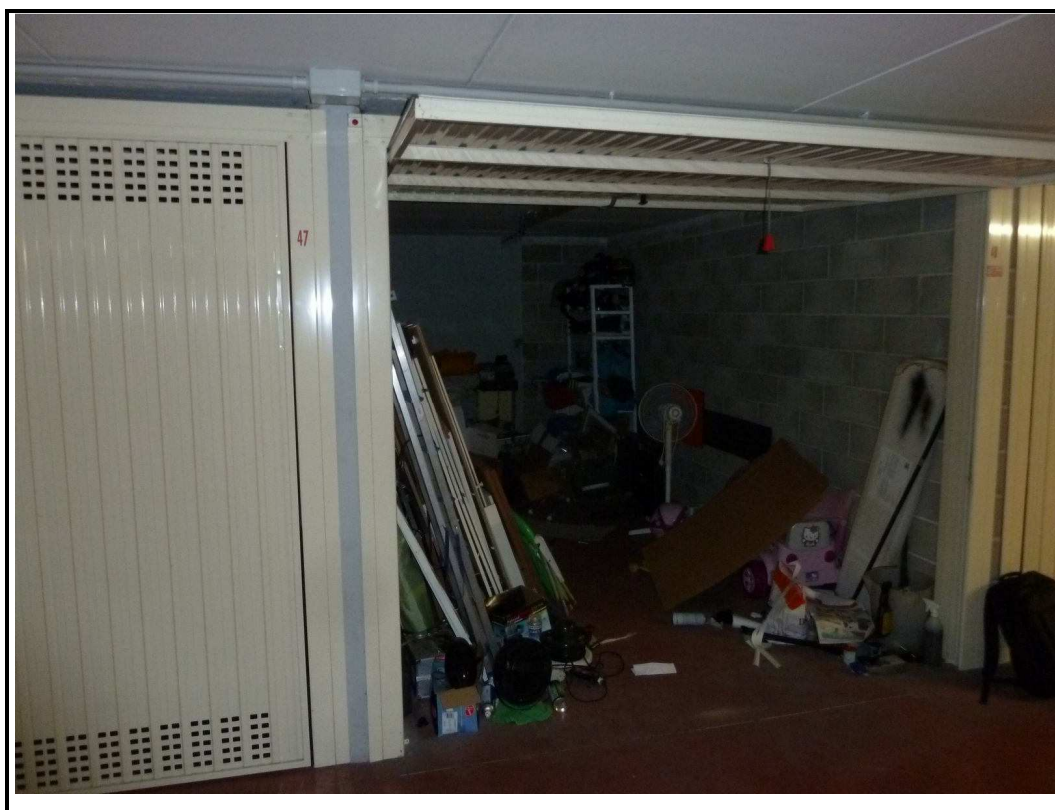


Foto 8 – particolare box. n° 48

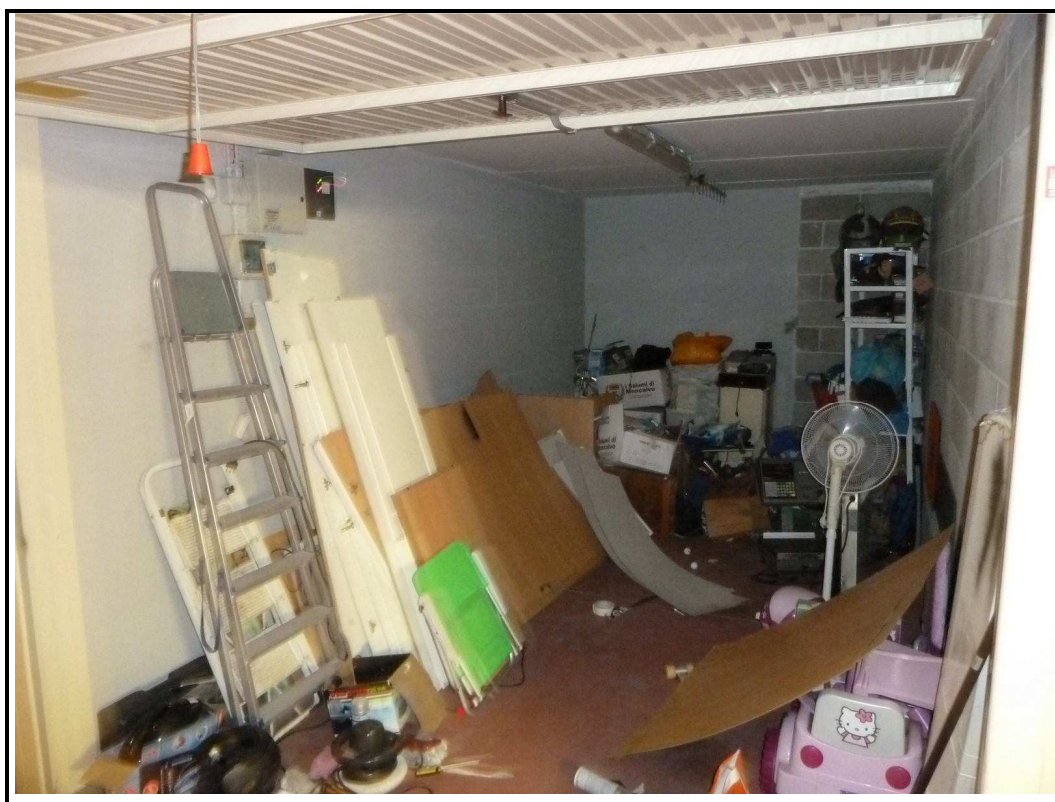


Foto 9 – particolare interno box n° 48