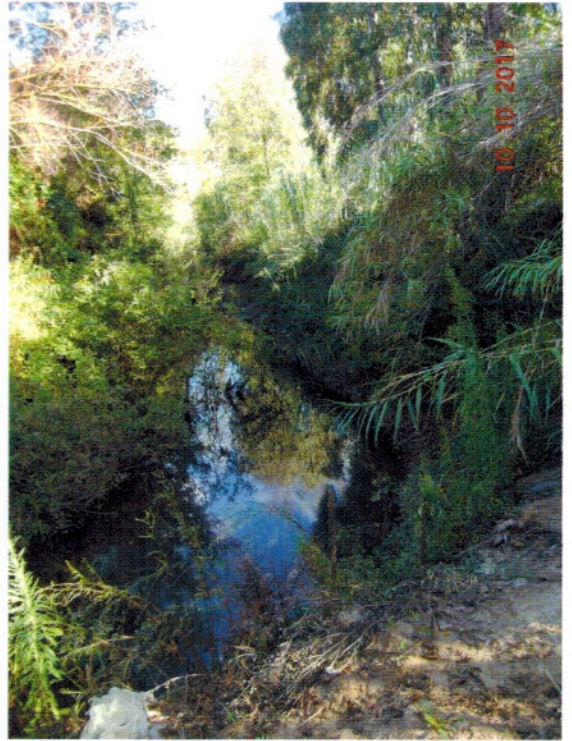


Procedura Esecutiva n.138/2017 R.G.Es. Trib. Termini Imerese  
Terreno sito in Vicari - C.da Piani



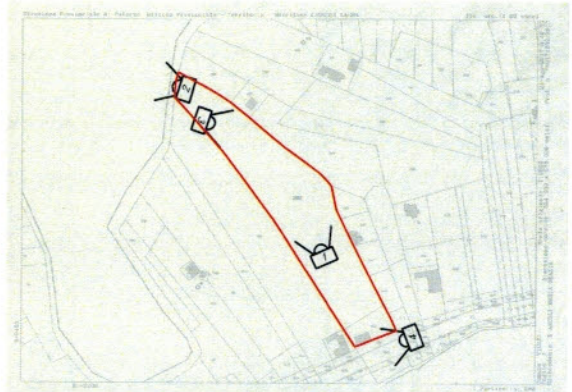
T1



T2



T3



T4





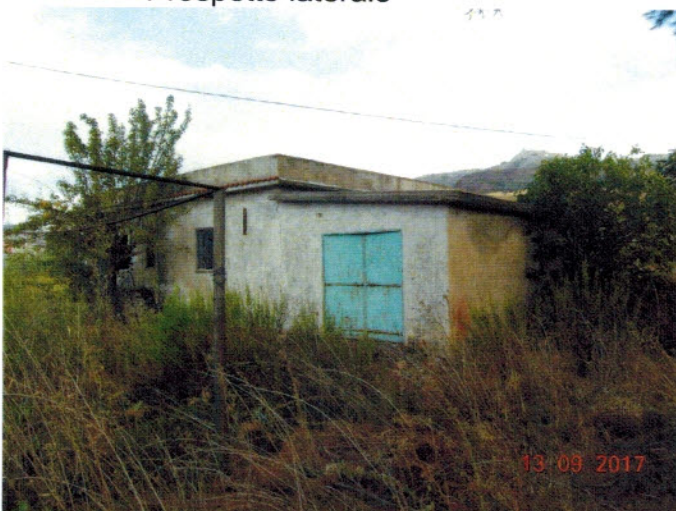
Prospetto anteriore e prospetto posteriore



Prospetto laterale

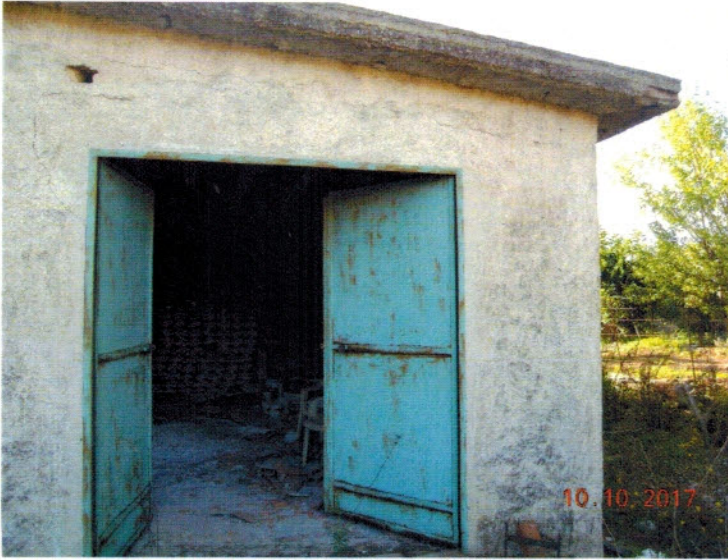


Mancano alcuni infissi esterni dei vani

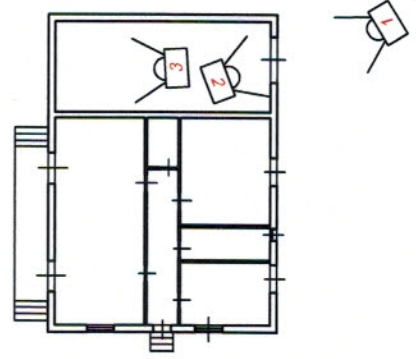


Prospetto posteriore con portone di  
accesso al locale disombero





N.1



N.2

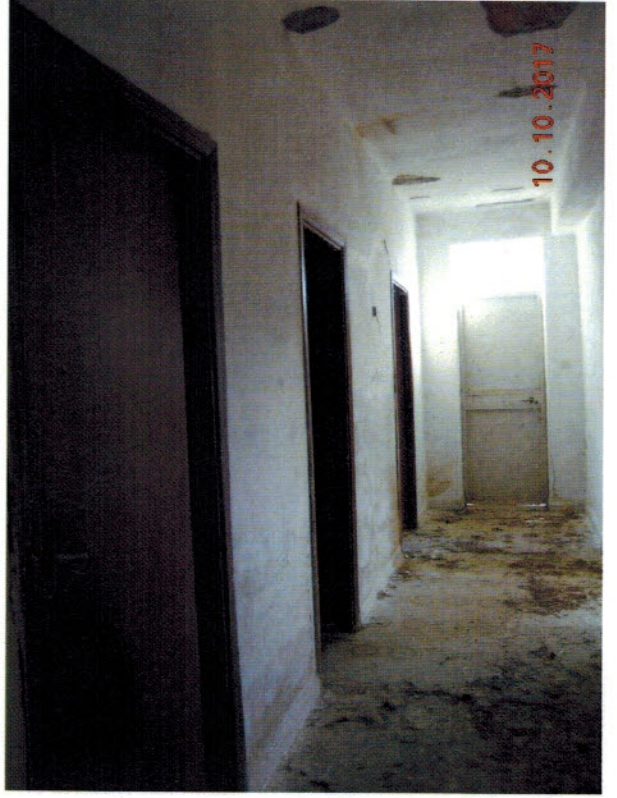


N.3

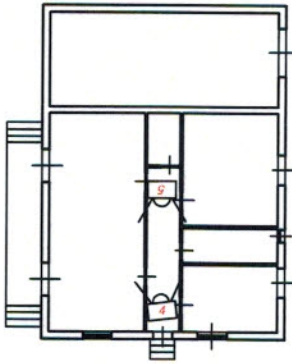


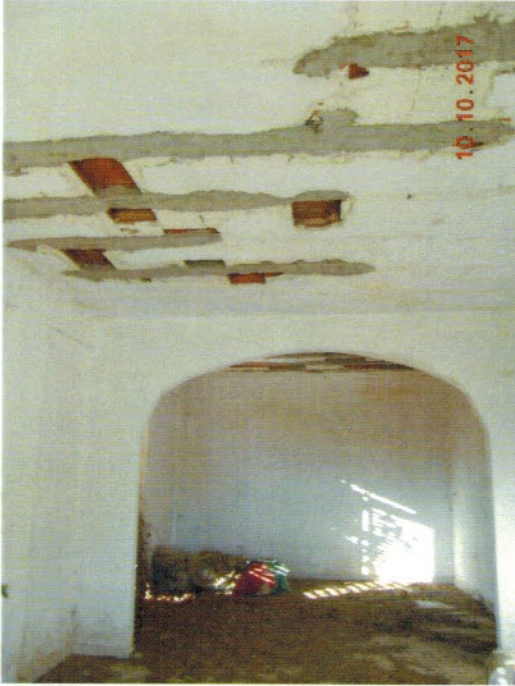


N.4

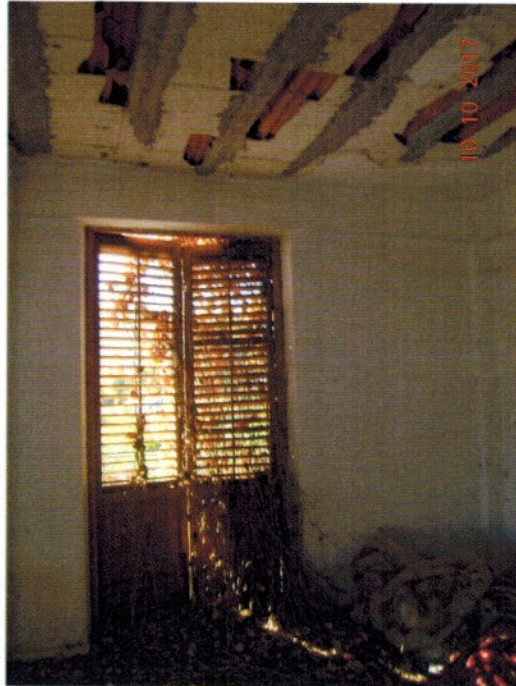


N.5

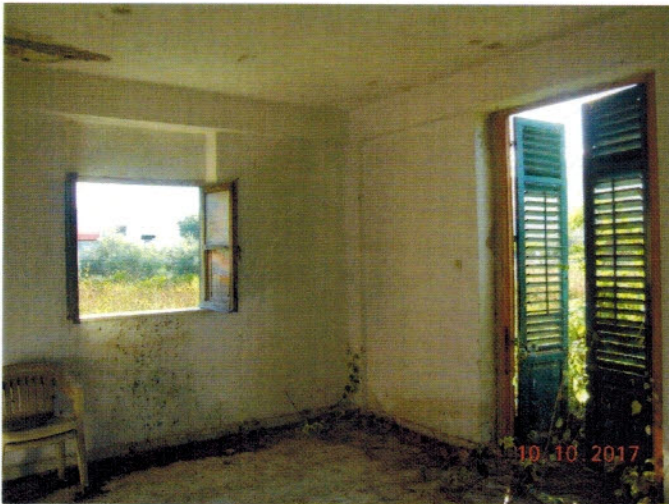
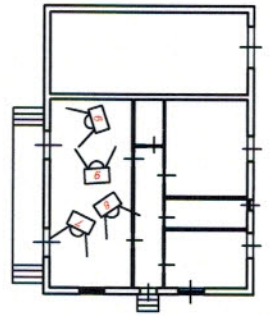




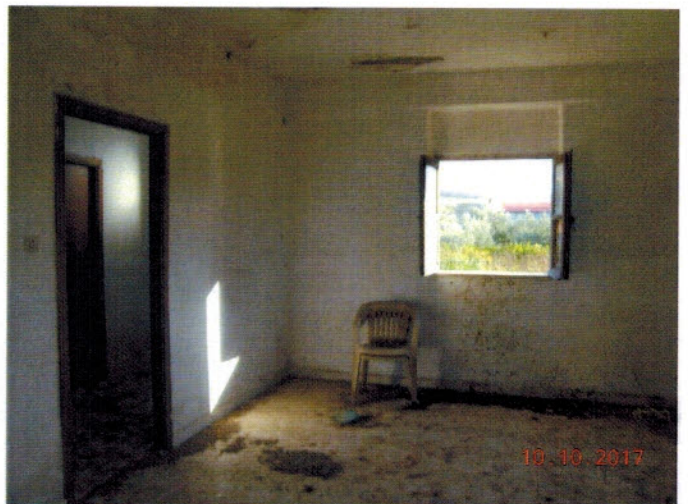
N.6



N.9



N.7



N.8

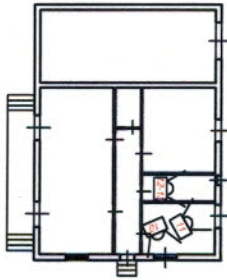




N.10



N.11

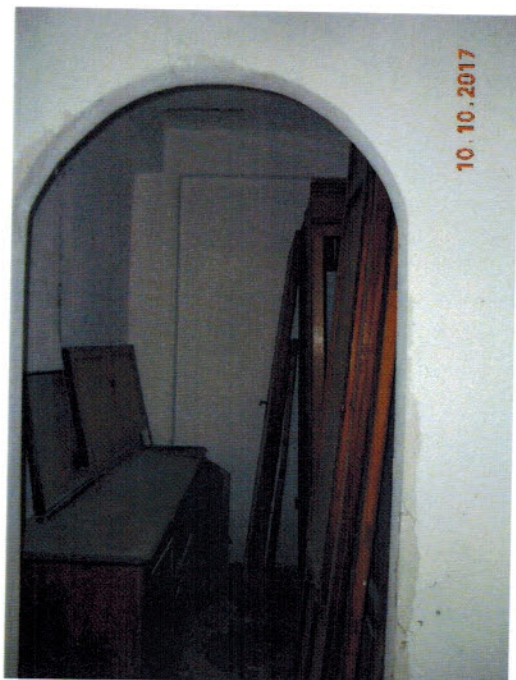


N.12

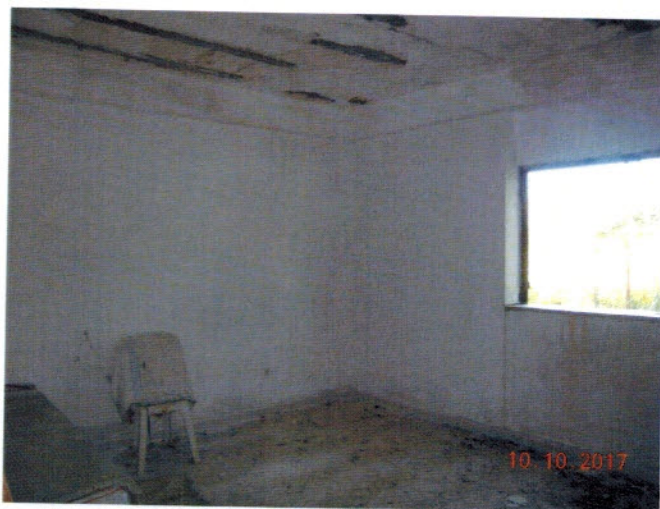
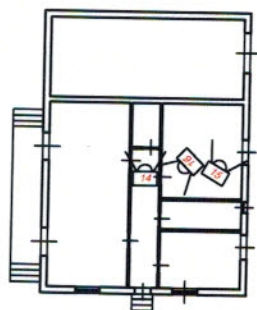


N.13





N.14



N.15



N.16

