

**TRIBUNALE DI TERMINI IMERESE**  
**SEZIONE ESECUZIONE IMMOBILIARE**

R.G. n. 168 anno 2017



**Allegato 3 - Documentazione fotografica**





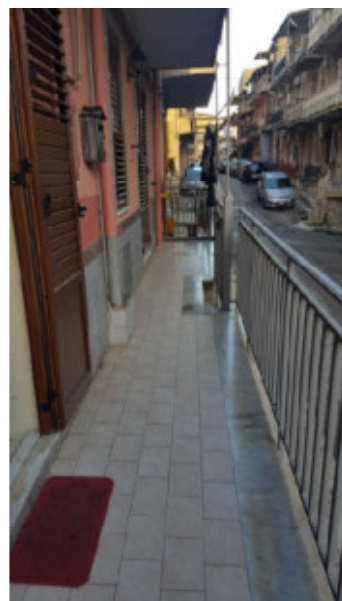
**Foto 01 - Prospetto su via G. Lo Gerfo**



**Foto 02 - Prospetto su via G. Lo Gerfo**



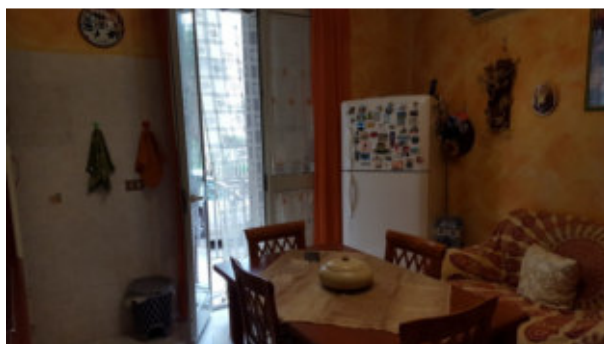
**Foto 03 - Prospetto su via S. Baudo**



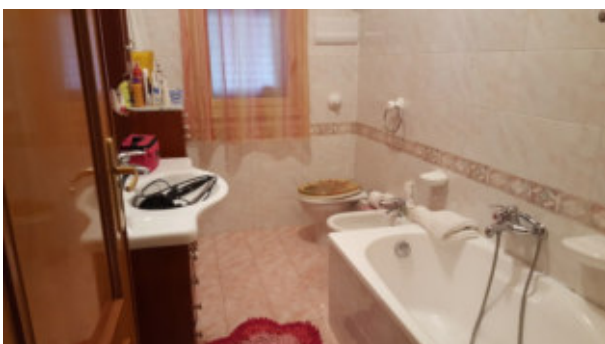
**Foto 04 - Marciapiede abusivo**



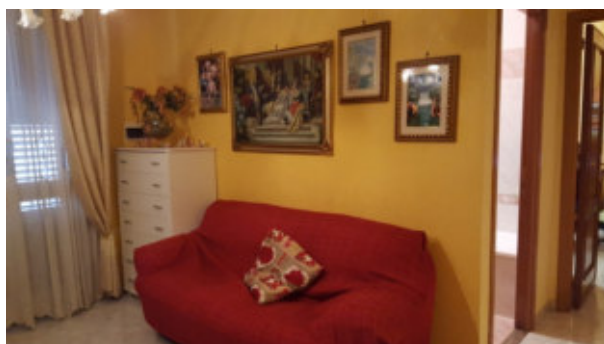
**Foto 05 - Cucina**



**Foto 06 - Cucina**



**Foto 07 - Wc1**

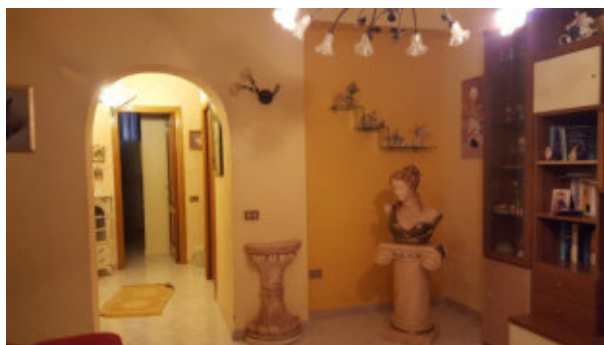


**Foto 08 - Soggiorno**





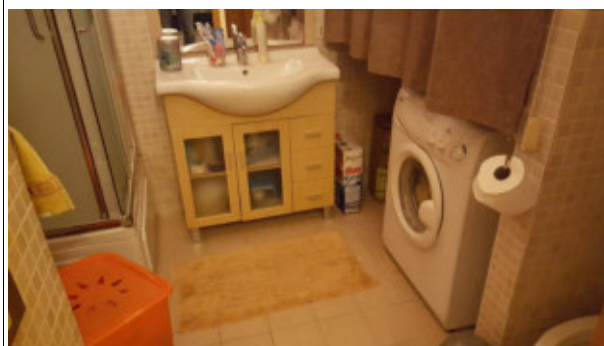
**Foto 09 - Soggiorno**



**Foto 10 - Soggiorno**



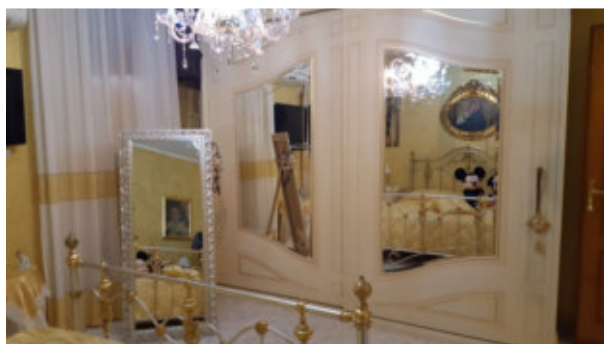
**Foto 11 - Disimpegno**



**Foto 12 - Wc2**



**Foto 13 - Camera**



**Foto 14 - Camera**







Foto 15 - Ripostiglio

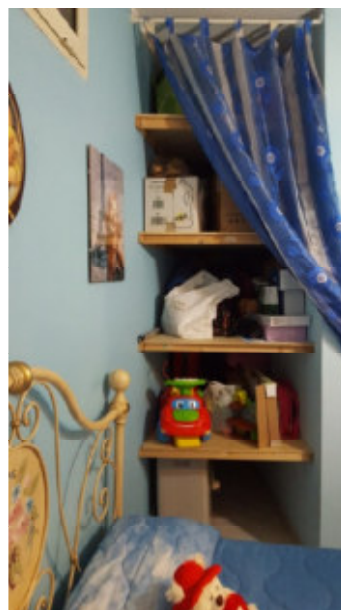
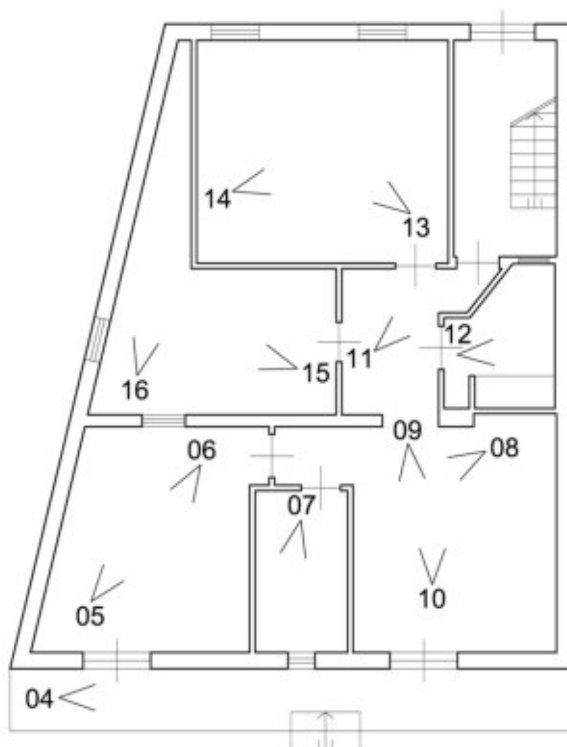


Foto 16 - Ripostiglio

# PLANIMETRIA CONI OTTICI

03



01

02

