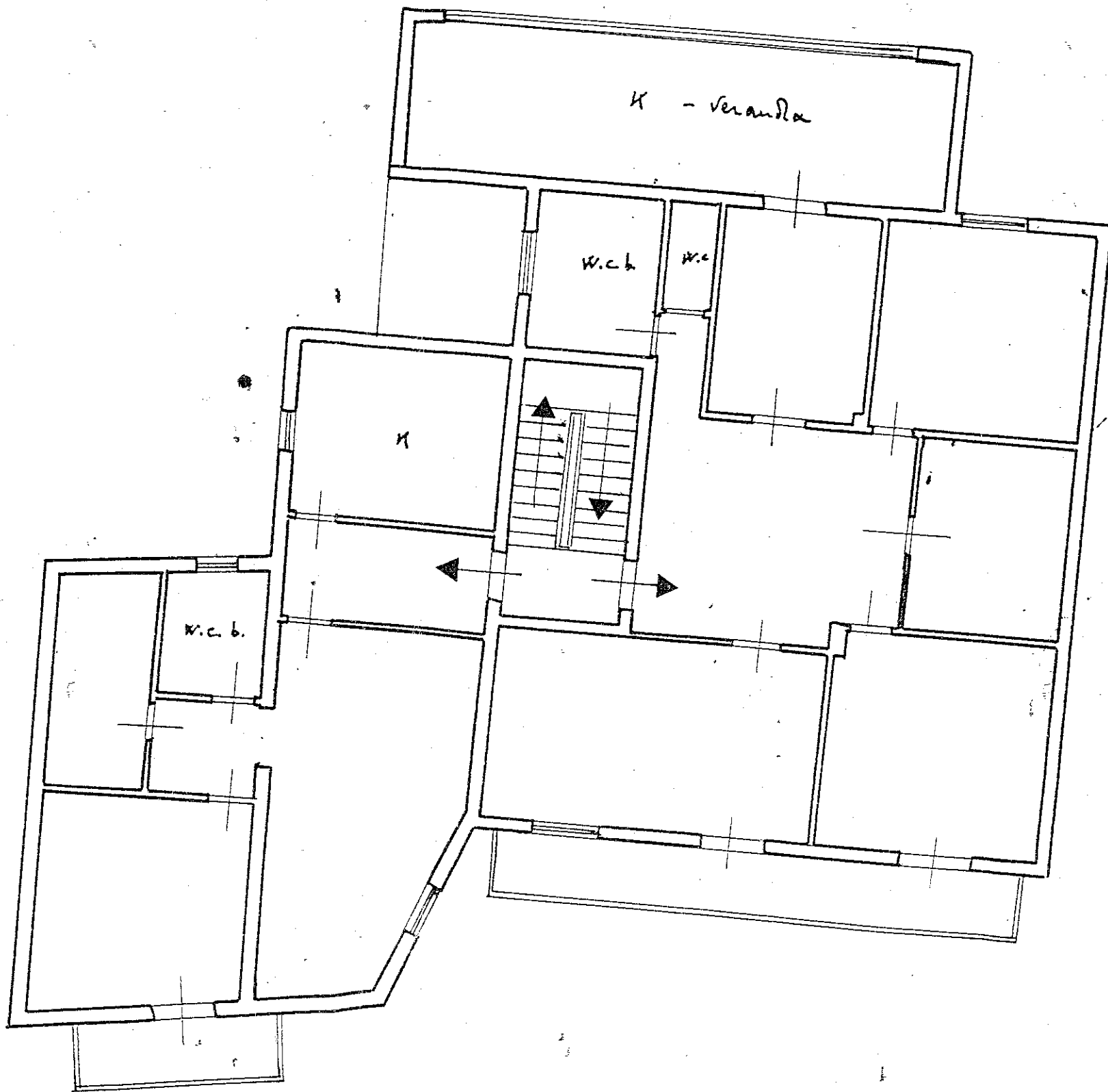


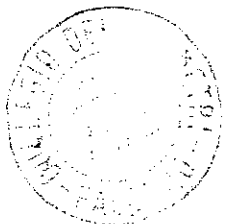
Almetra a quota di primo piano

V. 3



part 3355/1

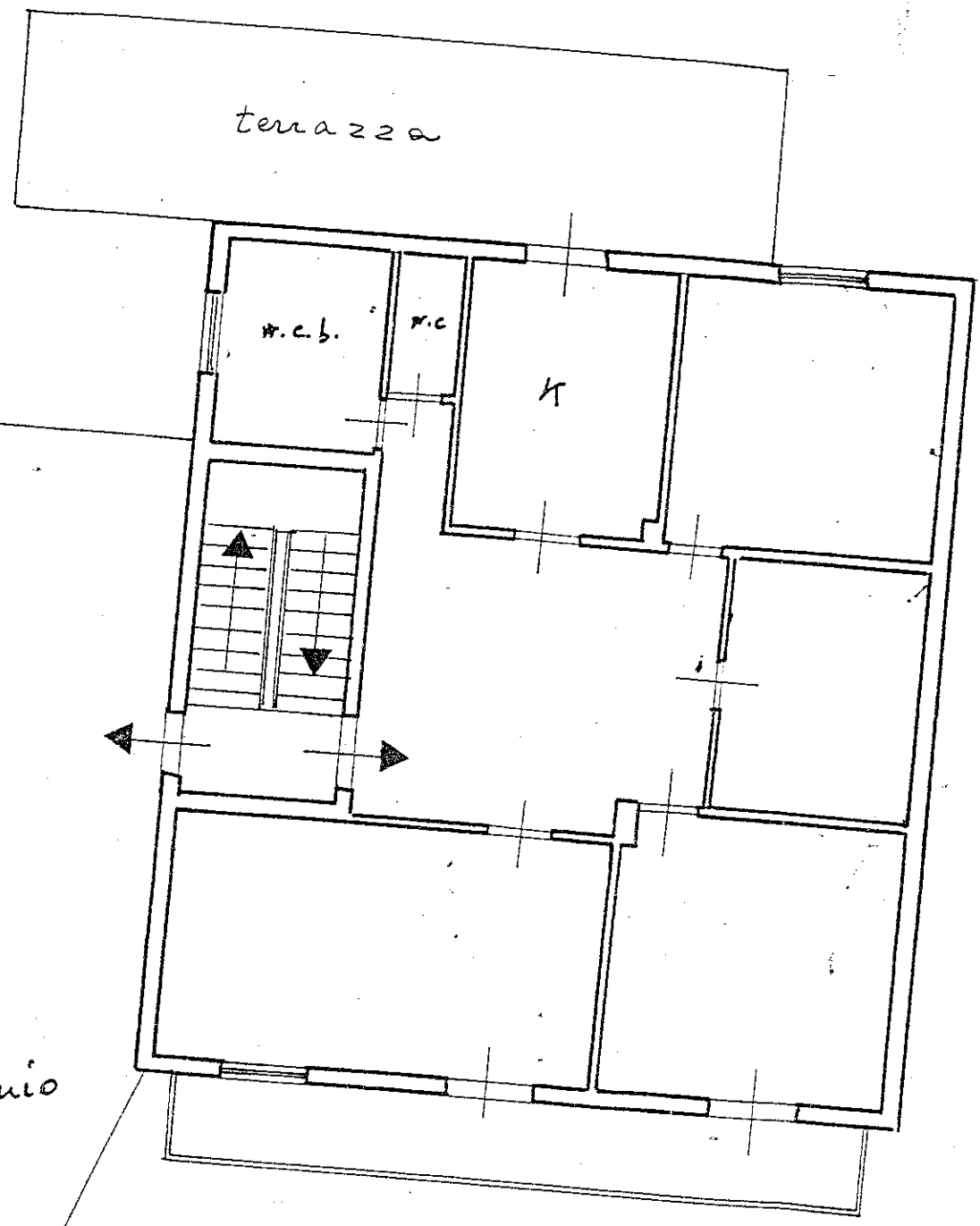
part 1885/2



Geo. Molinari

Via Paolo Marghera
oggi Via AL 5

Plano a quota di secondo piano



part. 3355/2
 Scheda 306
 Venduto a Namio

part 1885/3

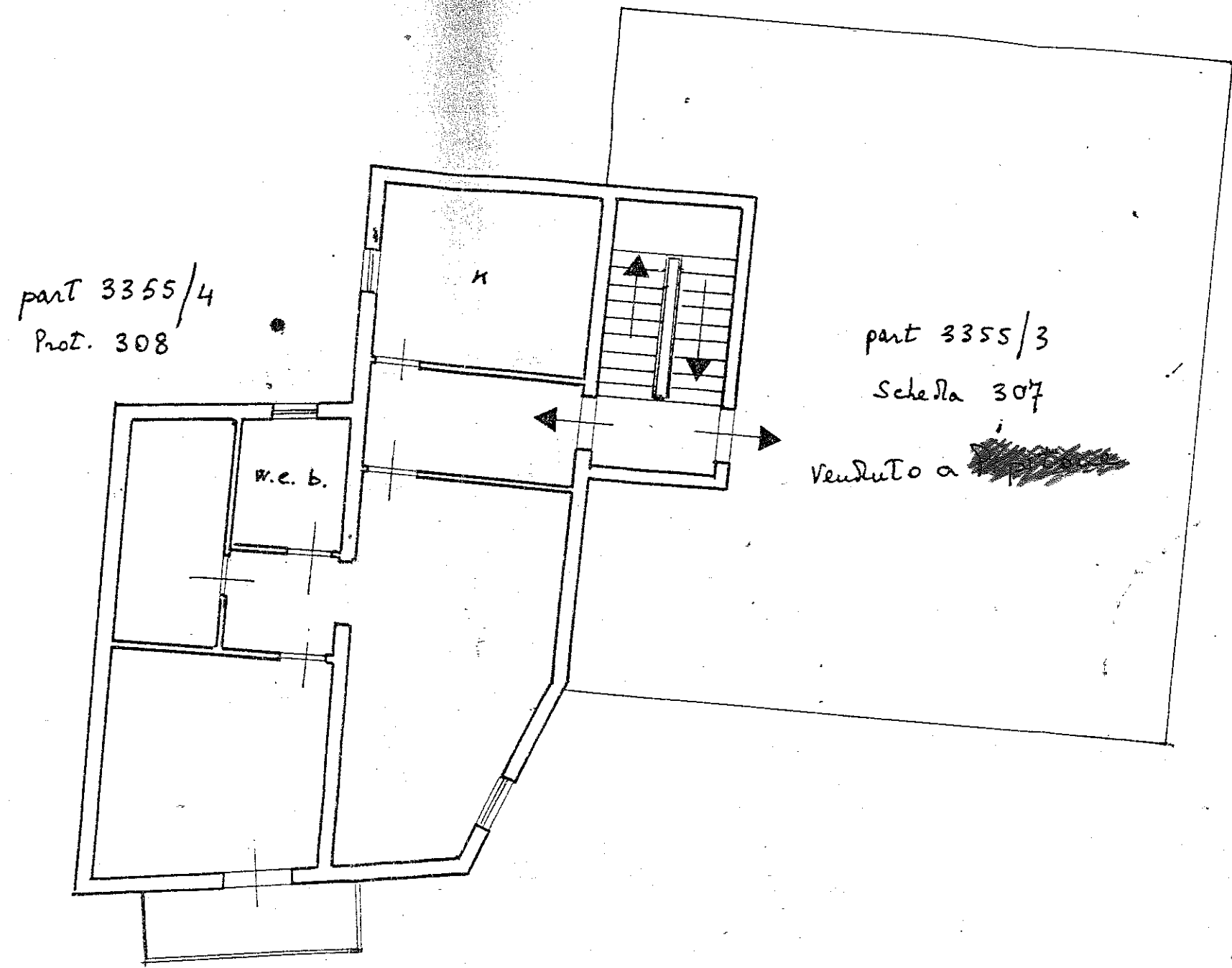


Il Consulente Tecnico Giudiziario
 (geom. Aldo Montana)
 Jean Mellisautay

Via Foulo Margi farac
 oggi Via A L 5

metra a quota di terzo piano

5



Consulente Tecnico Giudiziario
(geom. Aldo Montisina)

Geo. Allolenta

Via Fondo Margherita
oggi via AL 5