

ALLEGATO n°5



FOTO n° 4/26



Foto n° 2/26



Foto n° 3/26



Foto n°4/26

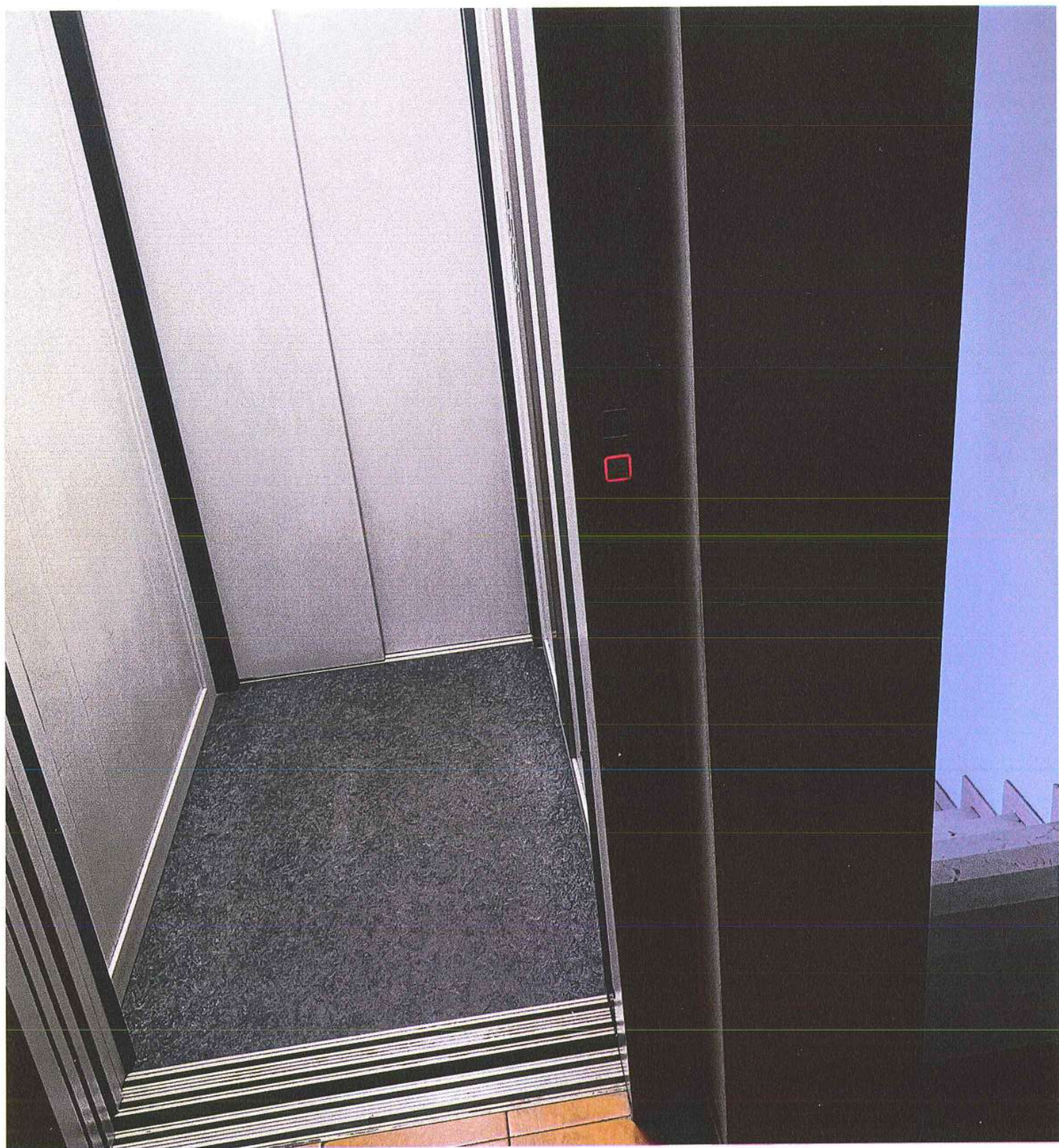


Foto n° 5/26

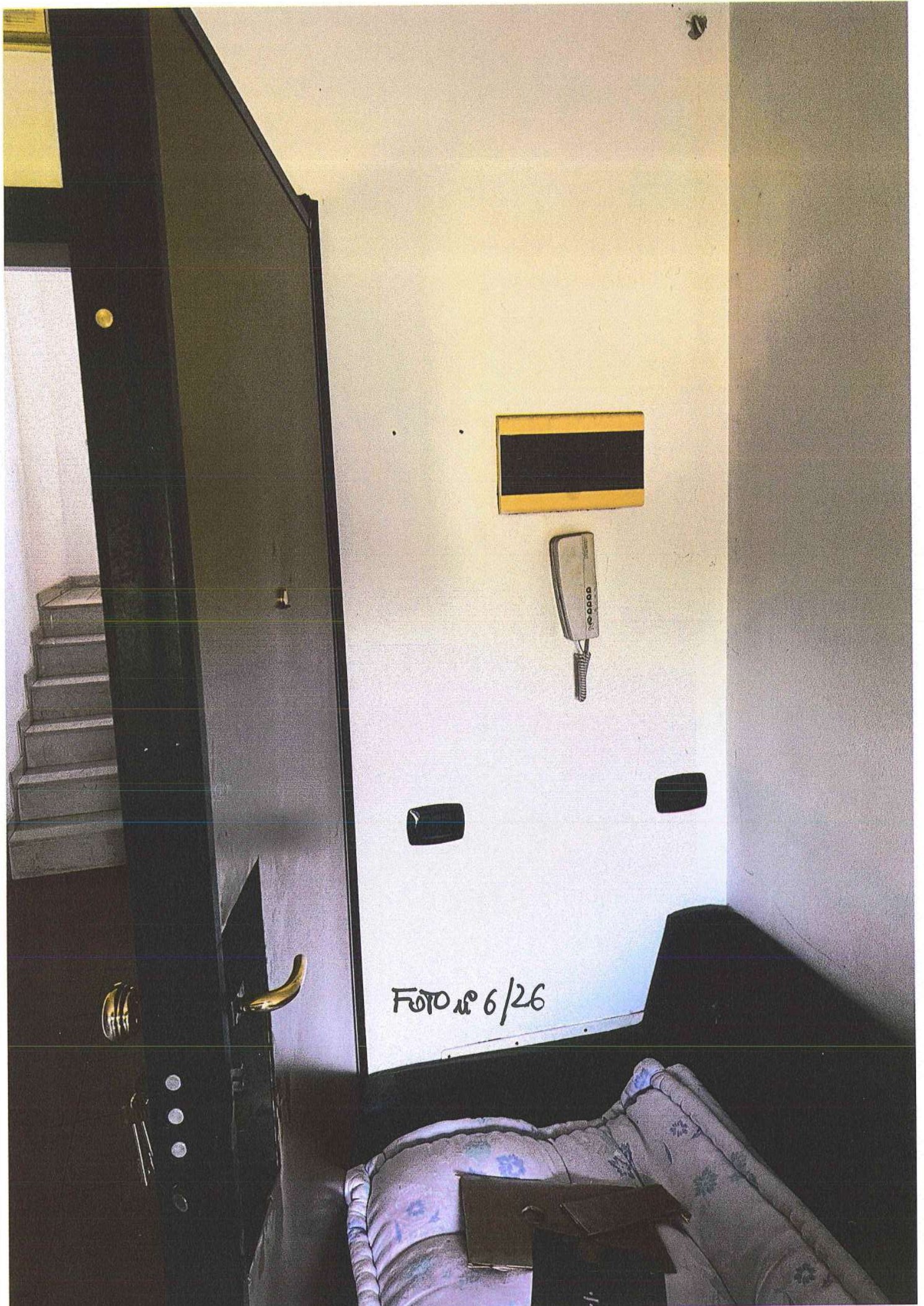


Foto № 6/26



Foto n° 8/26



Foto n° 9/26





Foto n° 40/26



Foto n° 11/26



Foto n° 12/26



Foto n° 13/26

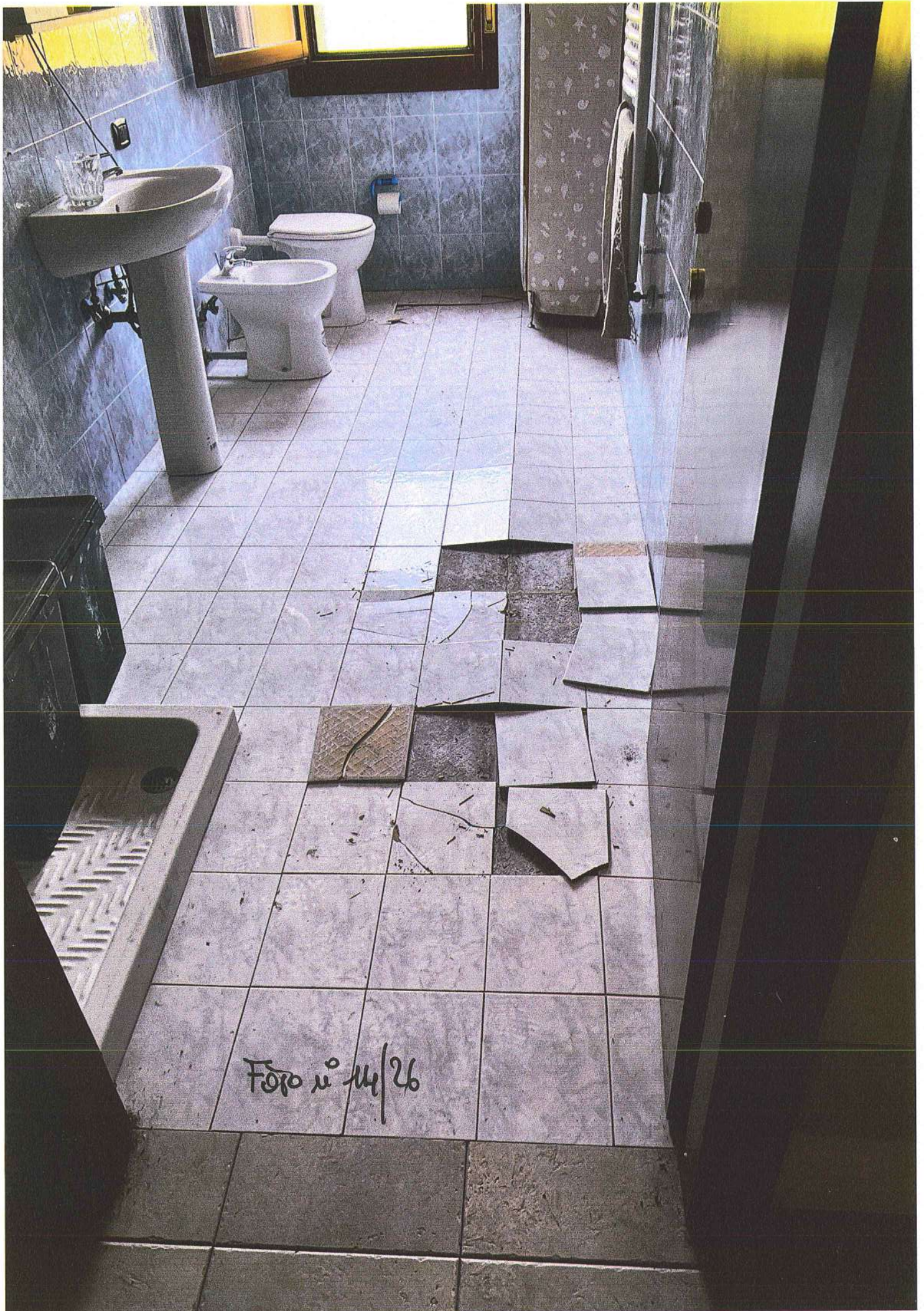


Foto n° 14/26

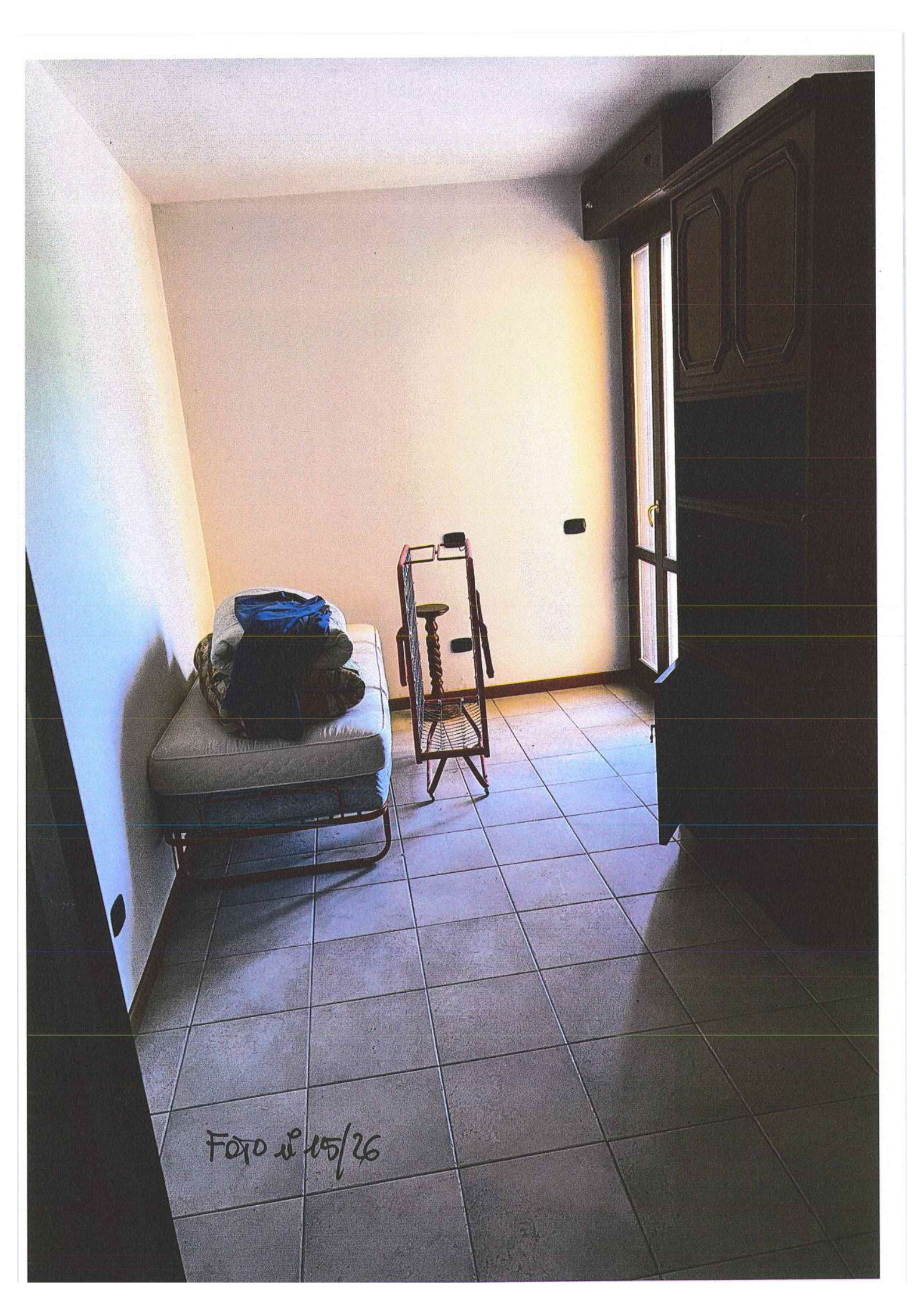
A photograph of a room with a tiled floor. On the left, there is a white bench with a blue bag and a dark bag on it. In the center, there is a metal chair with a woven seat. On the right, there is a dark wooden cabinet with a glass door. The walls are light-colored, and the floor is made of large, square tiles. The lighting is warm, coming from the right side of the frame.

Foto n° 15/26

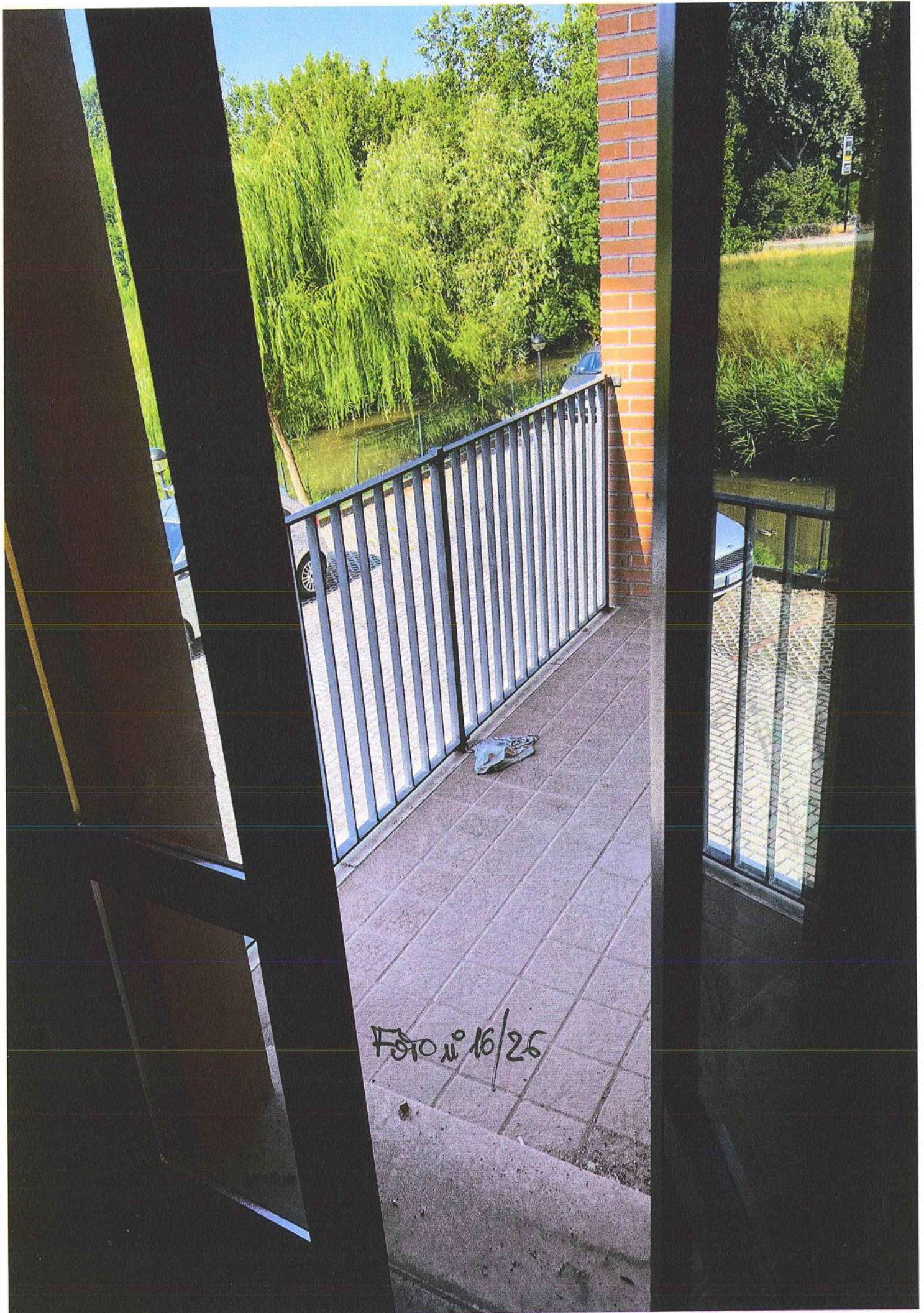


Foto n° 16/25

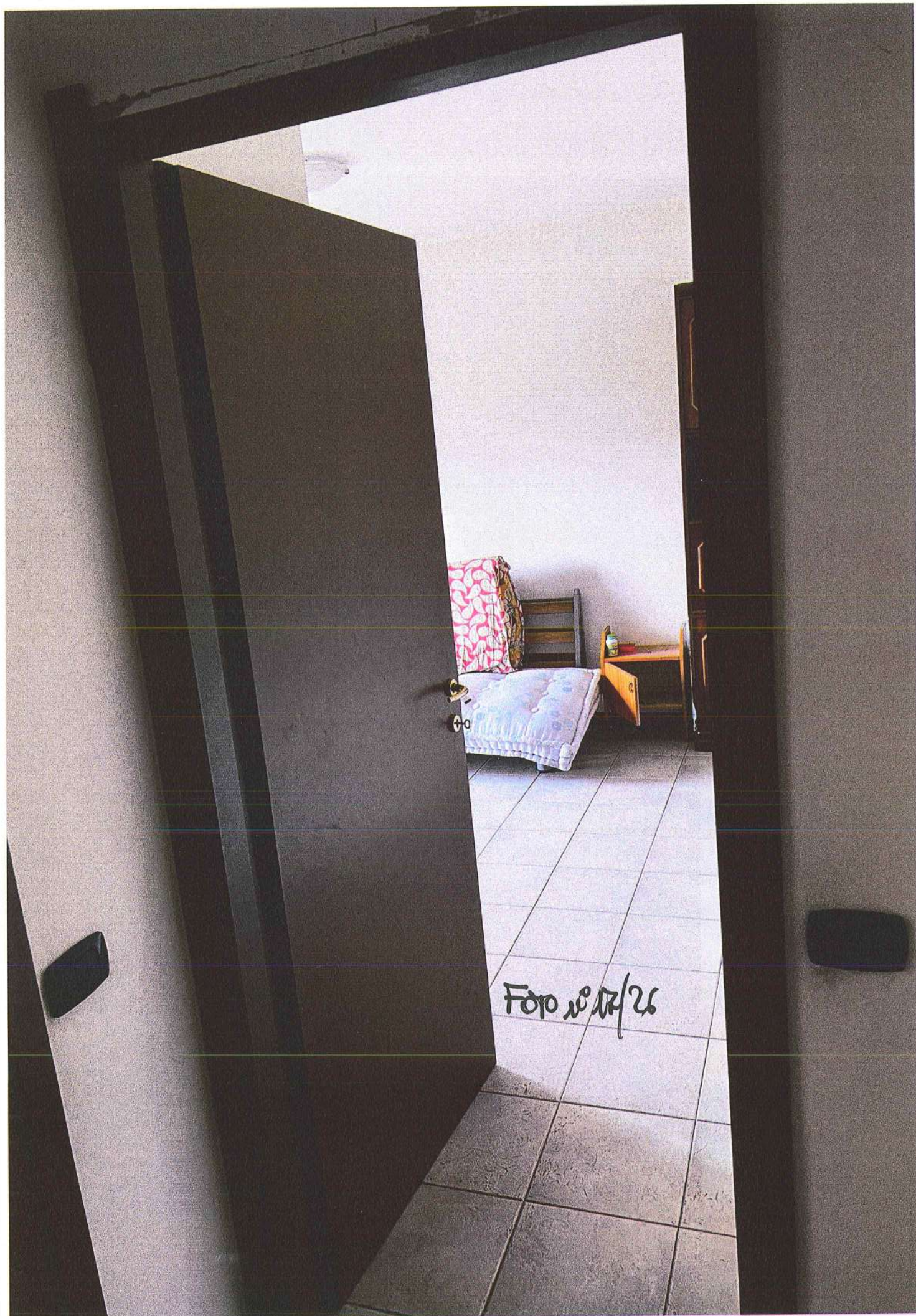


Foto nº 17/26





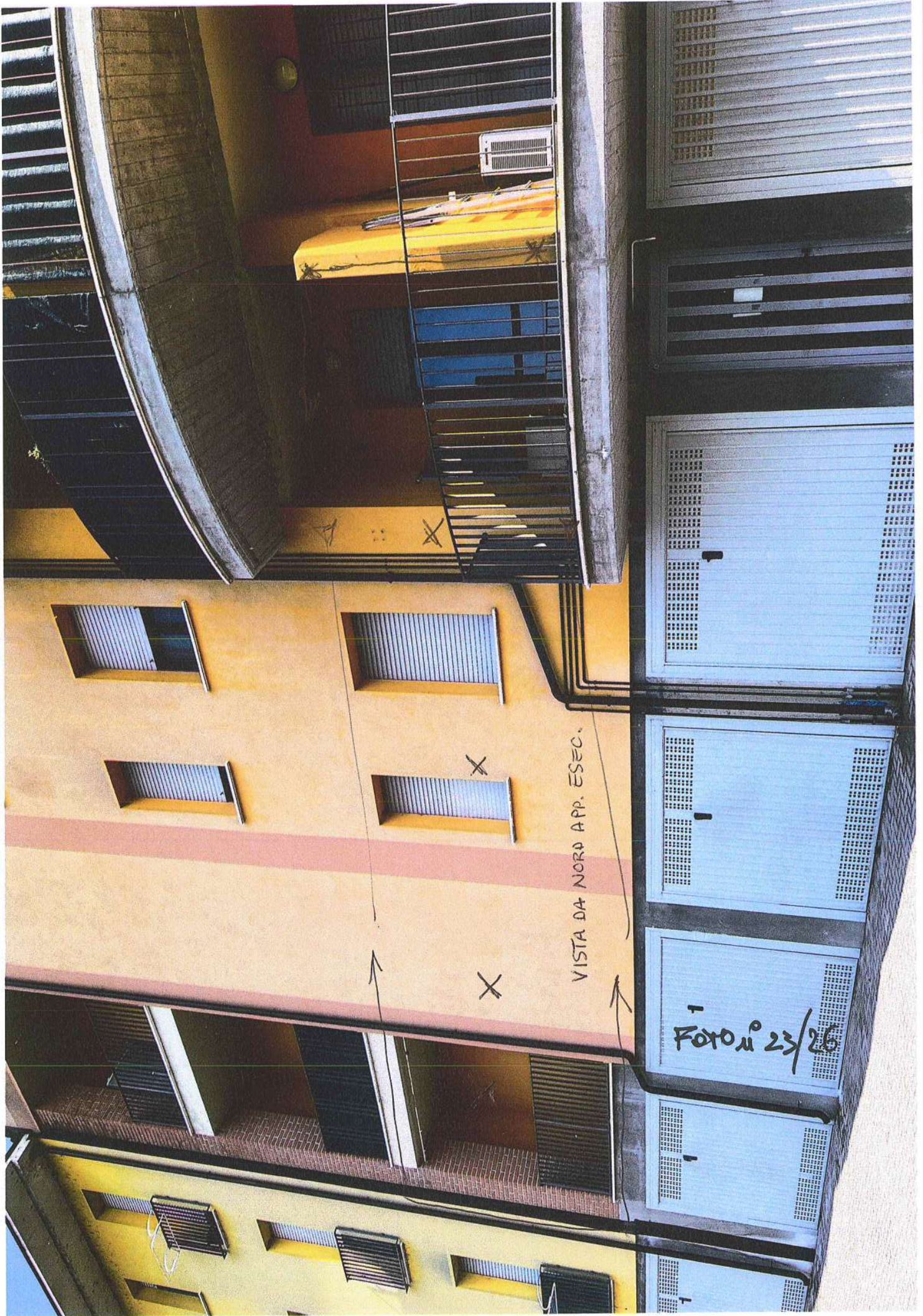
Foto nr 18/26



Фото №19/26

Foto n° 24/26





VISTA DA NORD APP. ESEC.

Foto n° 23/26



Foto n° 24/26



Foto n° 25/26

