

TRIBUNALE ORDINARIO - SONDRIO

ESPROPRIAZIONI IMMOBILIARI

86/2018



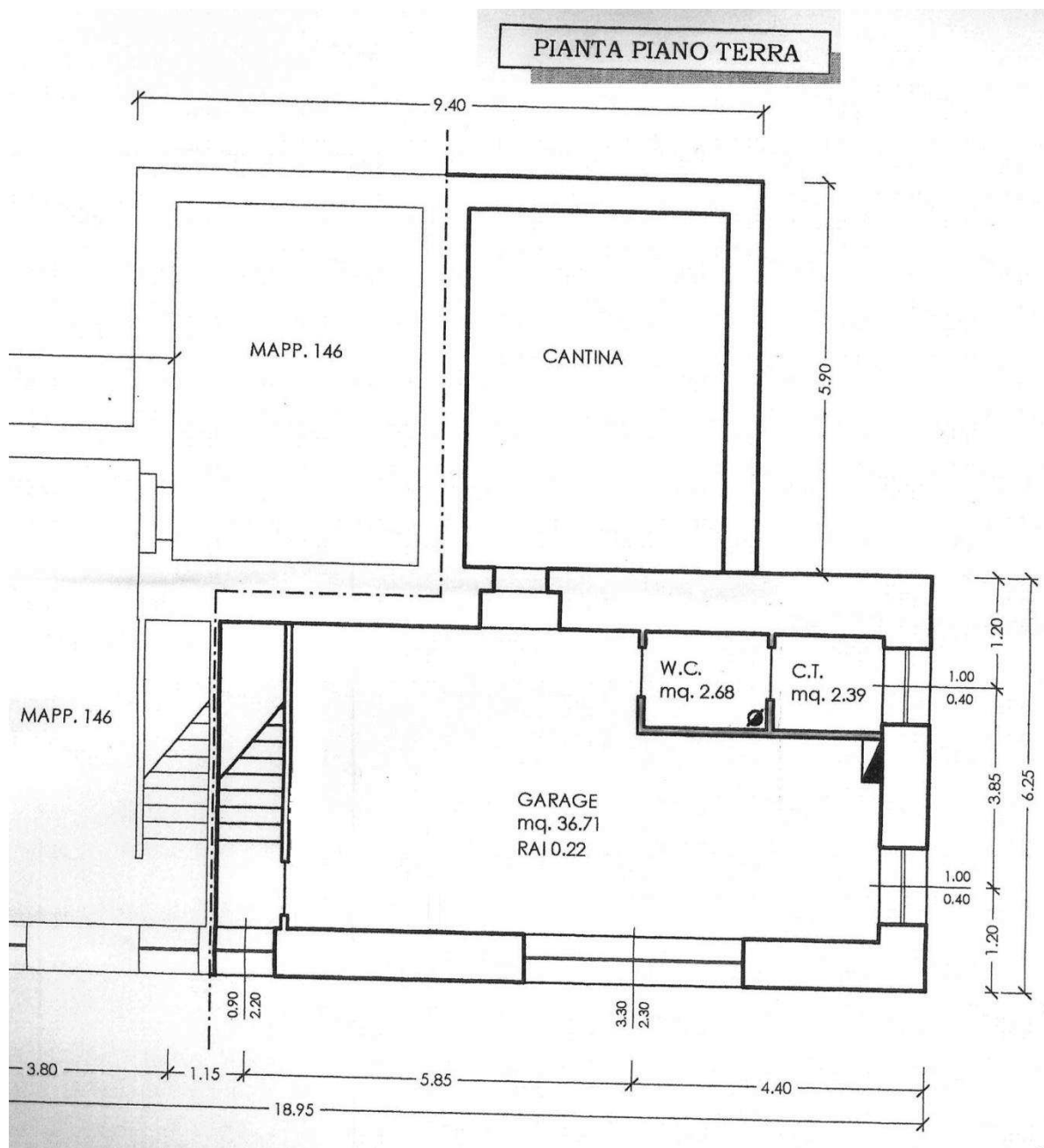
GIUDICE:

dott.ssa Francesca Roncarolo

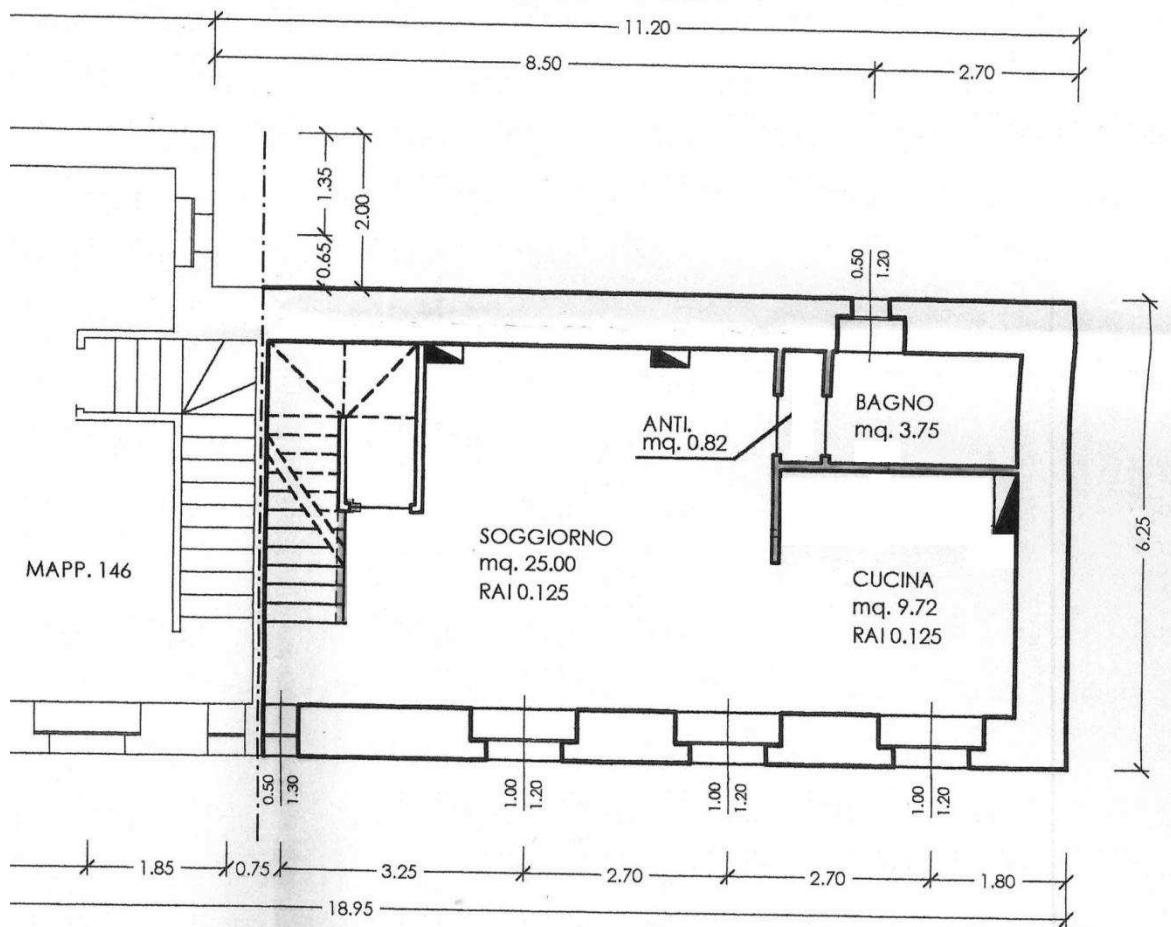
CUSTODE:

Geom. Boiani Stefano

PLANIMETRIE FABBRICATO



PIANTA PIANO PRIMO



PIANTA PIANO SECONDO

