

Foto 3. Abitazione vista dal vialetto d'ingresso



Foto 2. Muretto di confine lungo la strada e giardino

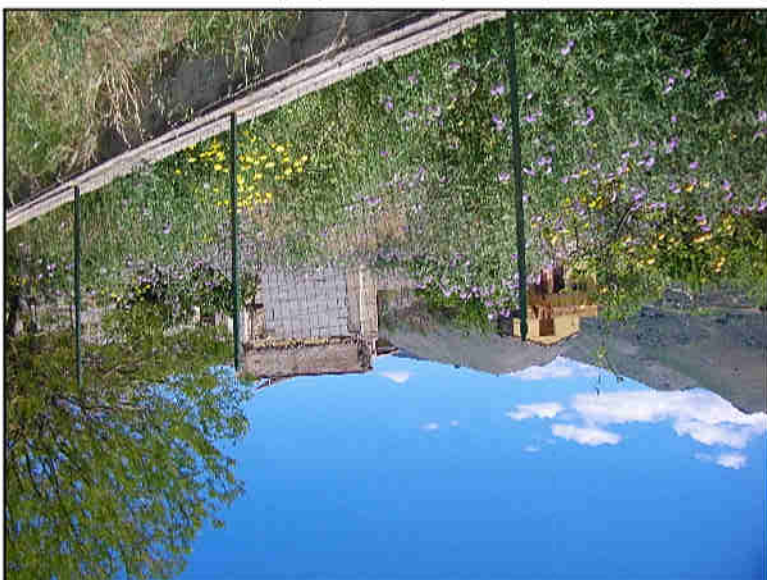


Foto 1. Cancelli di accesso alla proprietà

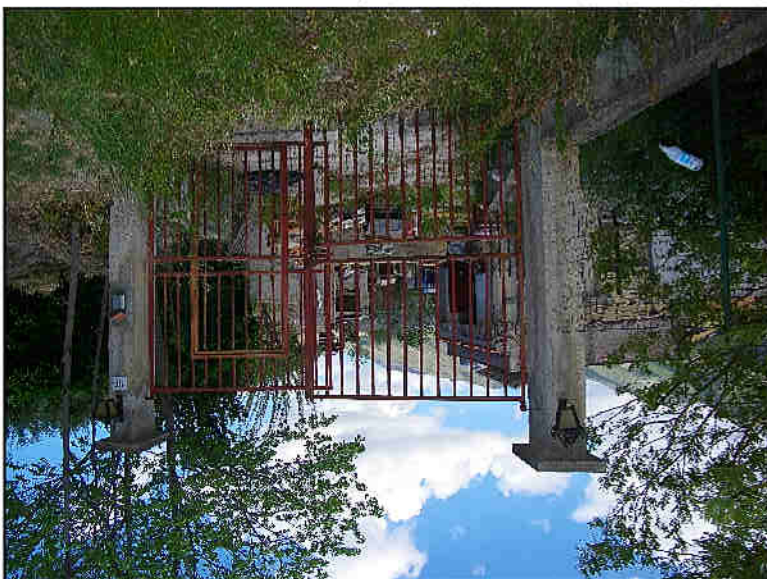


Foto 4. Vialetto di ingresso

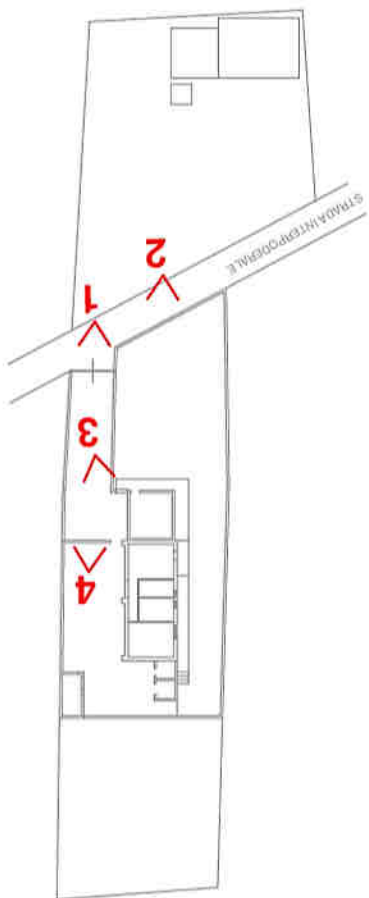




Foto 7. Corte antistante la casa



Foto 6. Parete esterna dell'abitazione in aderenza al locale



Foto 5. Locale di sgombero in muratura parzialmente costruito



Foto 8. Locale di sgombero parzialmente costruito

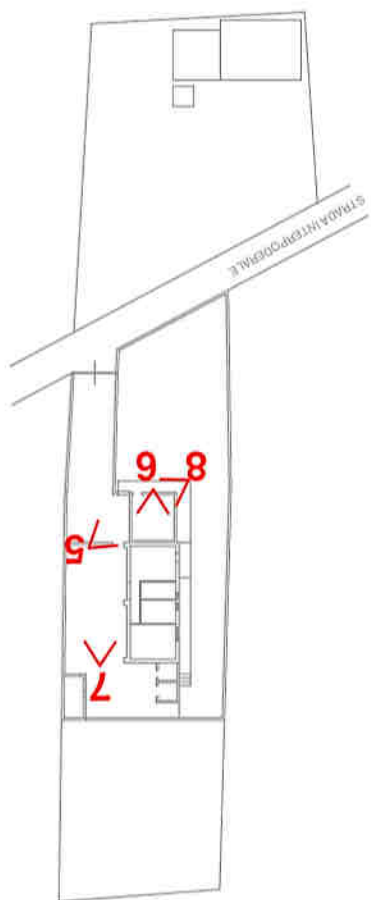
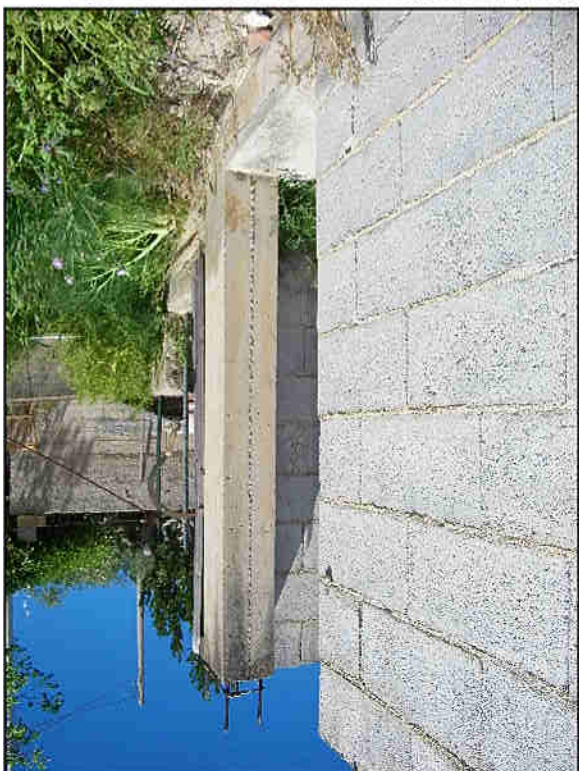




Foto 11. Piccola cucina in muratura abusiva



Foto 10. Corte antistante la casa



Foto 12. Piccola cucina in muratura abusiva



Foto 9. Ingresso all'abitazione

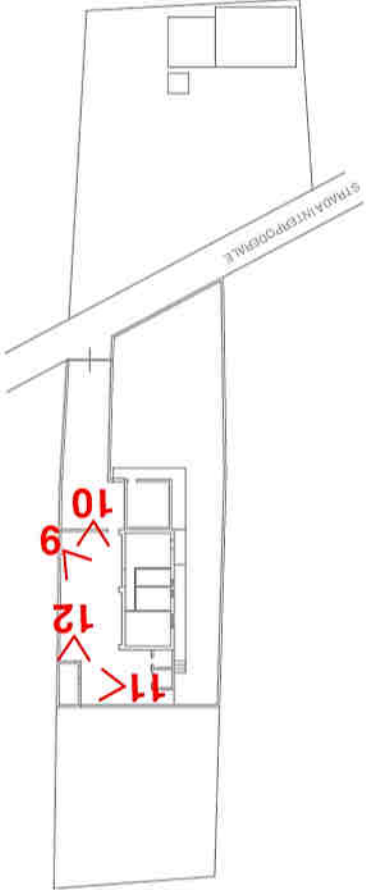




Foto 15. Retro dell'abitazione



Foto 14. Casotto in muratura abusivo



Foto 13. Recinzione di confine

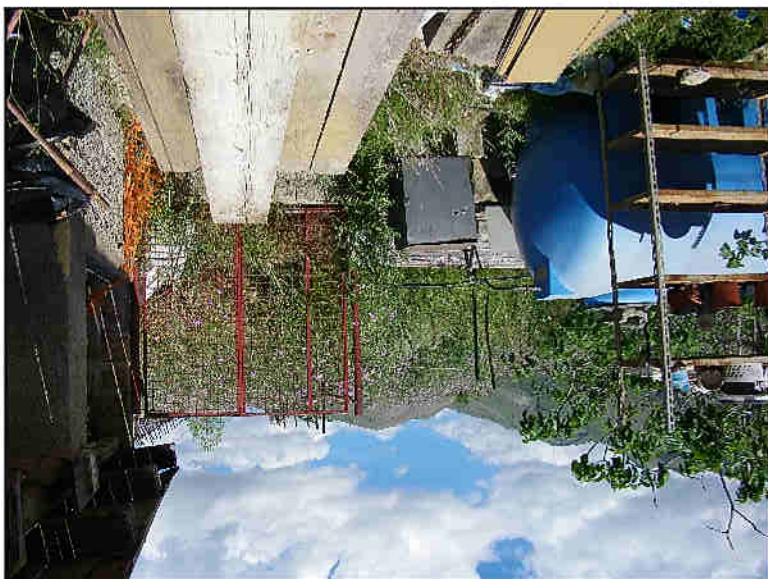


Foto 16. Terreno dietro la casa

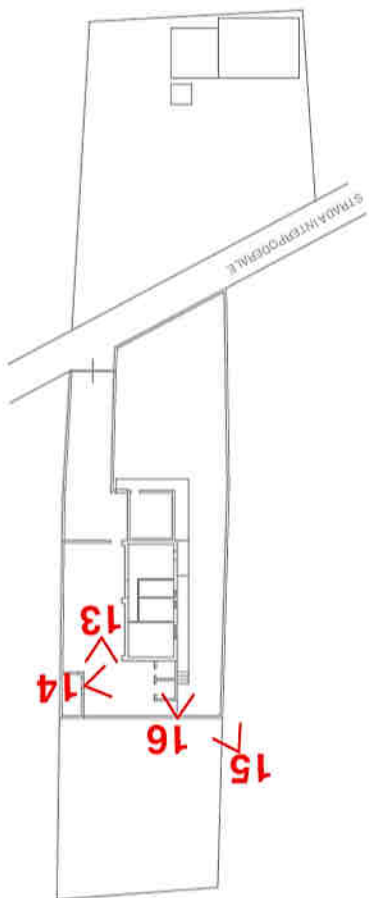
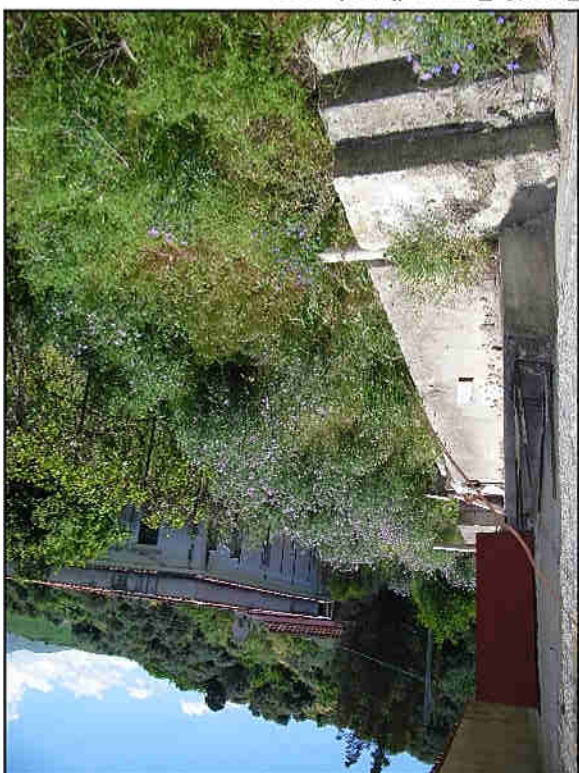


Foto 18. Camera da letto



Foto 20. Bagno

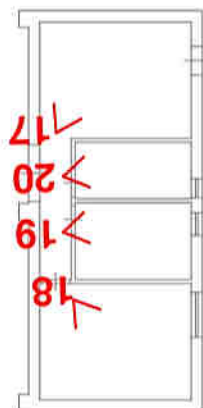


Foto 17. Cucina-soggiorno



Foto 19. Ripostiglio





Foto 23. Terreno agricolo



Foto 22. Terreno agricolo

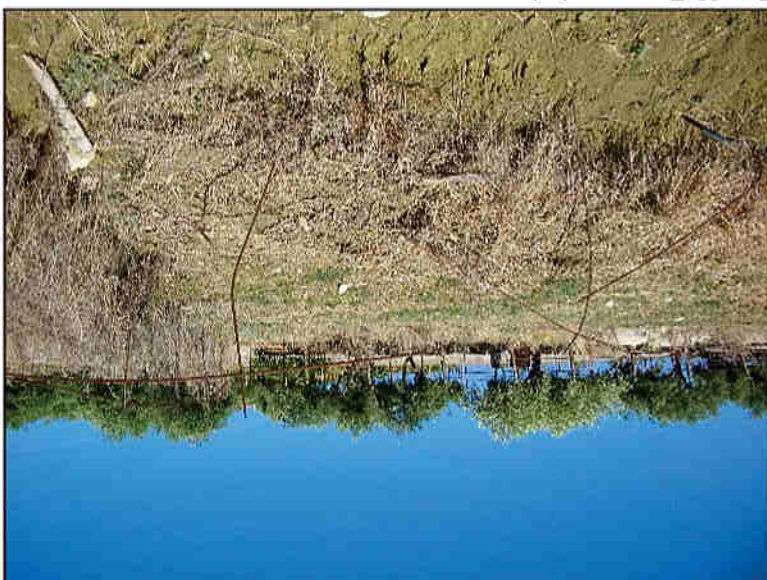
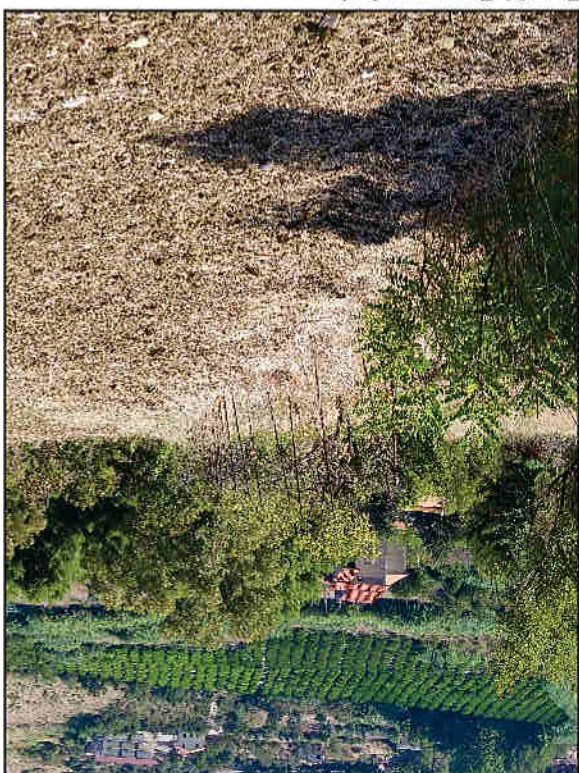


Foto 21. Terreno agricolo



Foto 24. Terreno agricolo



22 <

21 ✓

24 ✓

23 ✓