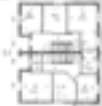




1000

1000



1000

1000

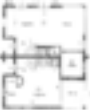


Figure 1

Figure 1 shows a schematic diagram of a mechanical assembly. The diagram illustrates the internal components and their relative positions. The rotor is a central component with a curved shape, and the stator is a larger, more complex structure surrounding it. The diagram is a technical drawing, likely a cross-section or a perspective view, showing the internal details of the assembly.

Figure 1

100

100

100

